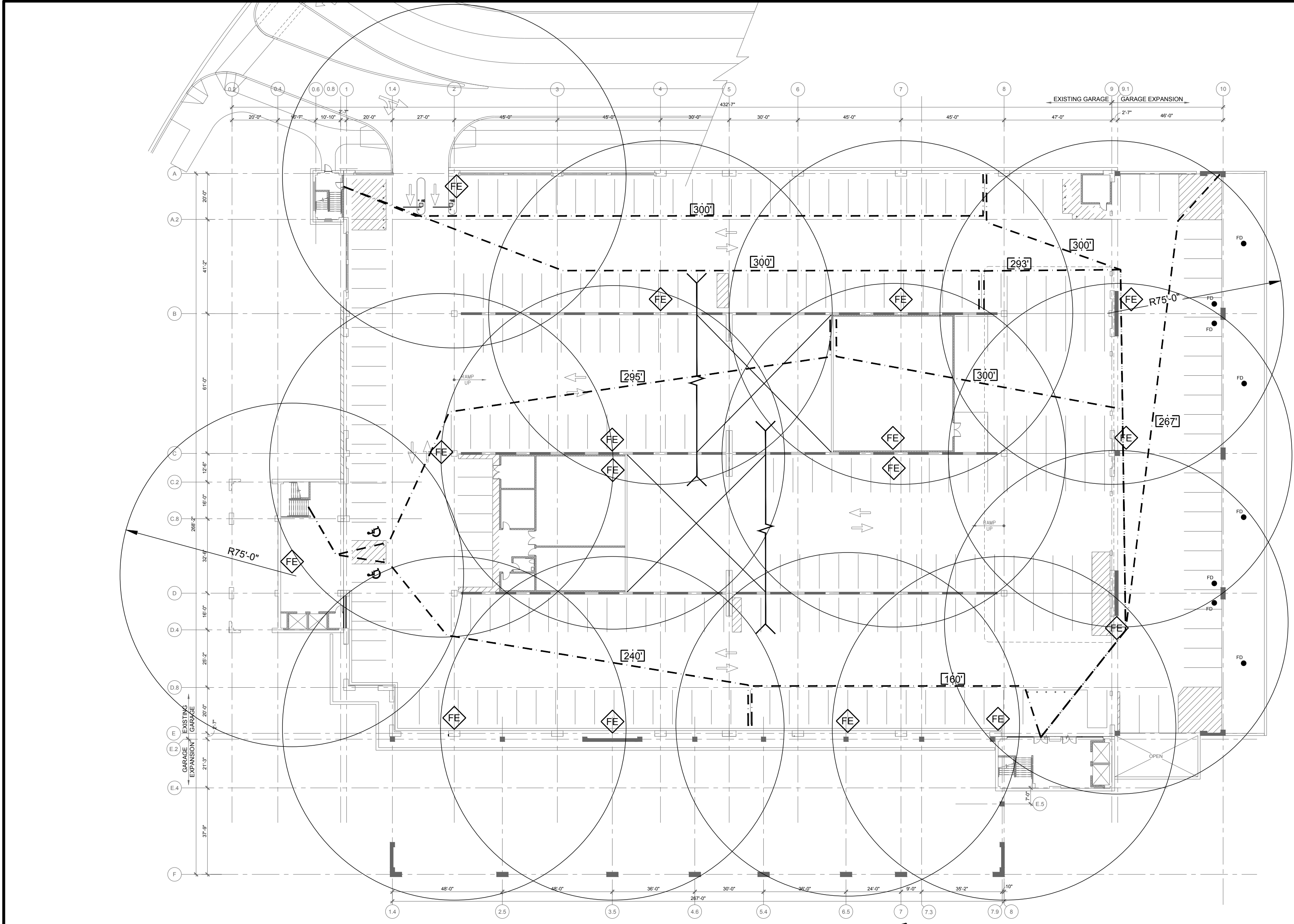
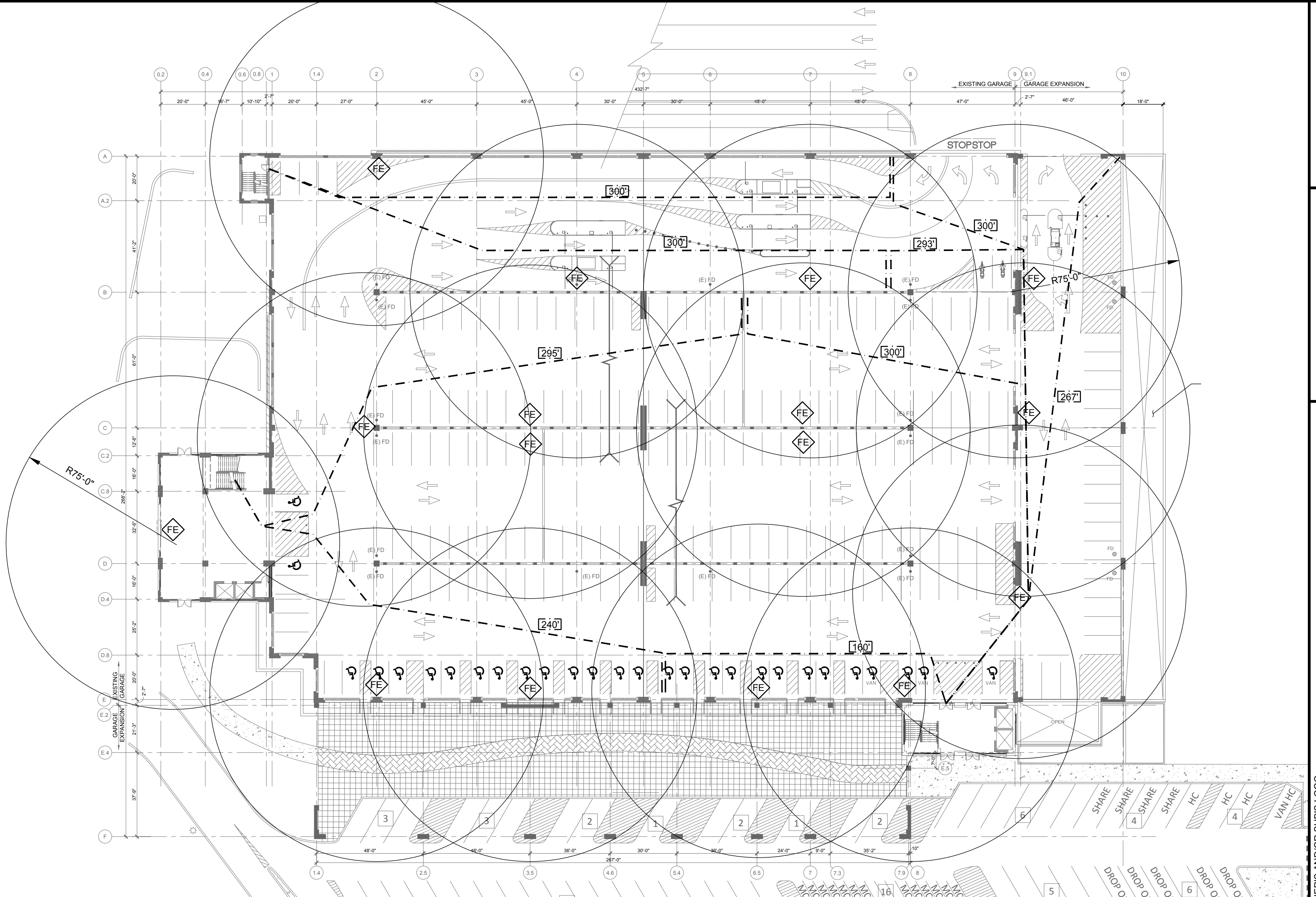
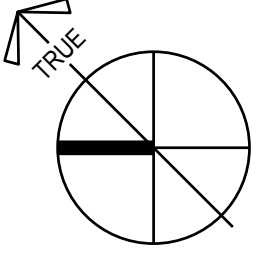


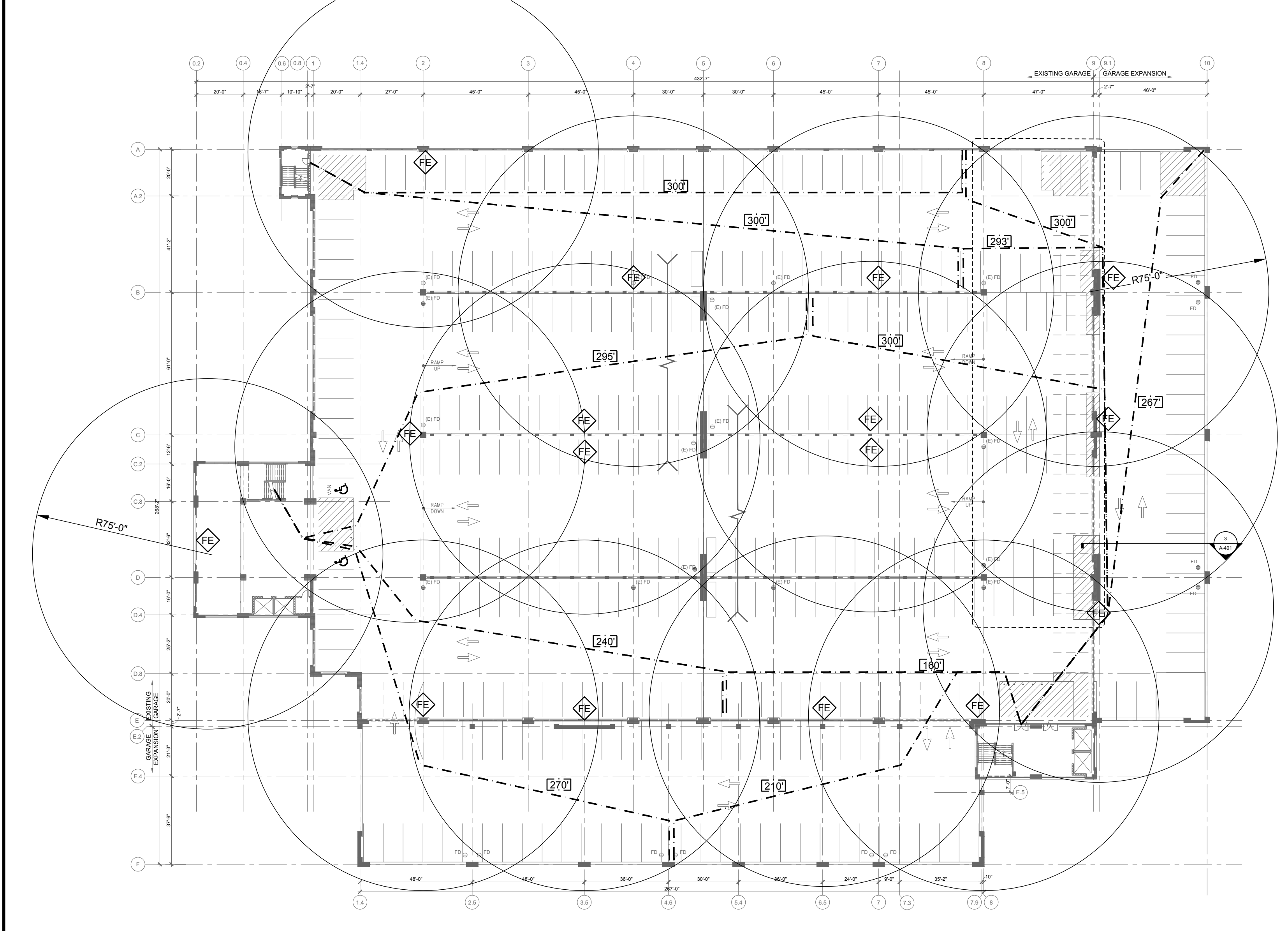
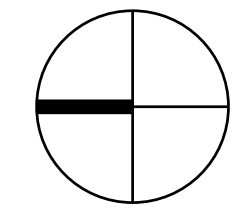
J:\14-4099-00-GROSVENOR_STRATHMORE\ACAD\05-ARCH\4099A-001.DWG 1/31/2018 9:24:28 AM MALETSKY, LUKE



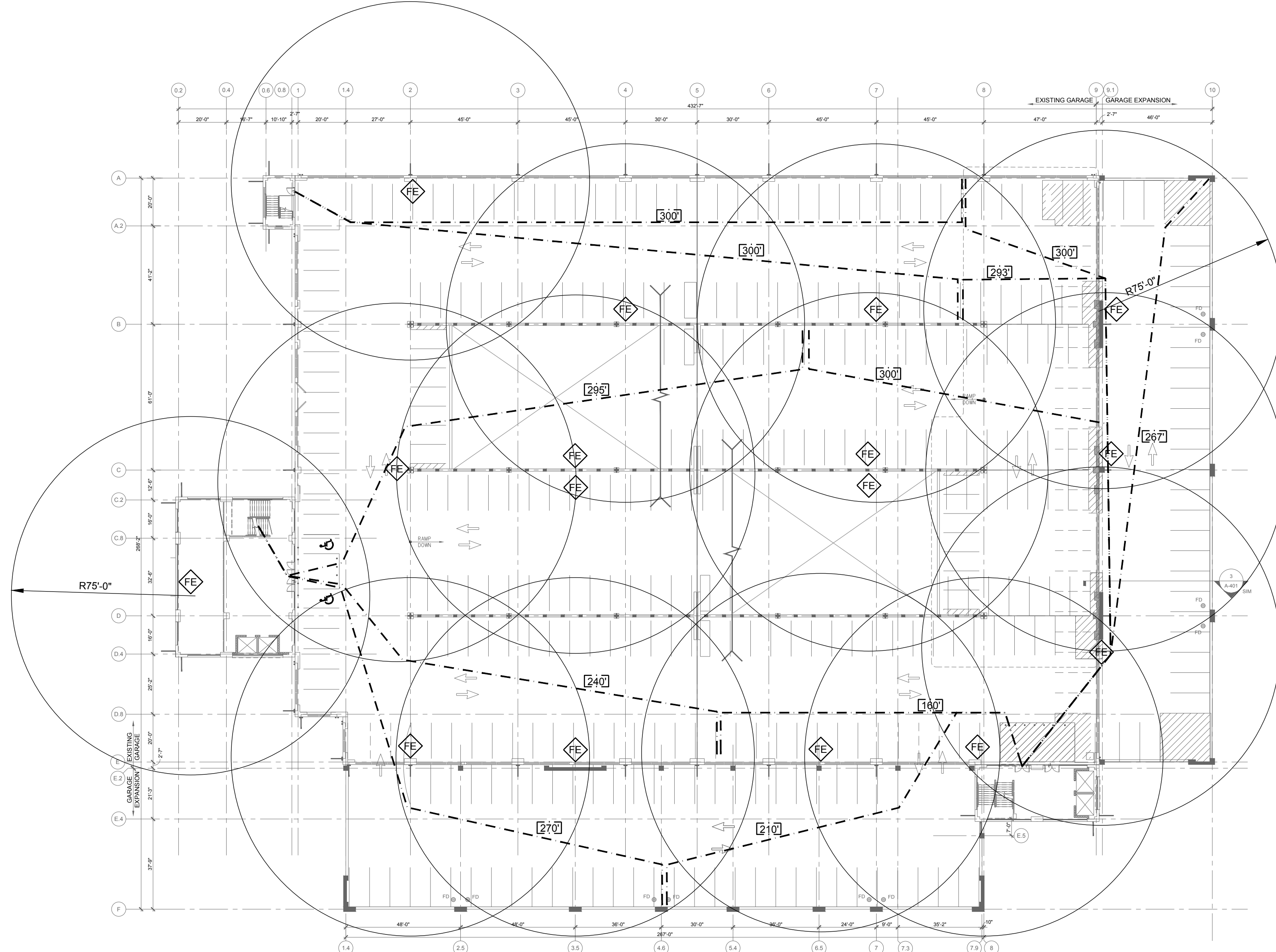
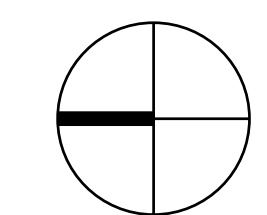
1 GROUND TIER



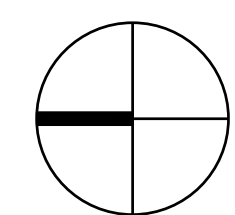
2 SECOND TIER



3 TYPICAL TIER



4 TOP TIER



LEGEND

FE DENOTES FIRE EXTINGUISHER. CABINET & SIGN PER SPECIFICATIONS. MOUNT CABINETS TO WALL OR COLUMN.

GROSVENOR STRATHMORE
PARKING GARAGE EXPANSION
 NORTH BETHESDA MARYLAND

MARK	DATE	DESCRIPTION	ISSUE
	10/1/18	30% PROGRESS SET	

PROJECT NO: 14-4099.00
 DRAWN BY: LRM
 CHECKED BY: TD
 SHEET TITLE:
LIFE SAFETY PLANS

A-001