

E-FILE STAMP

HOLY CROSS SCHOOL

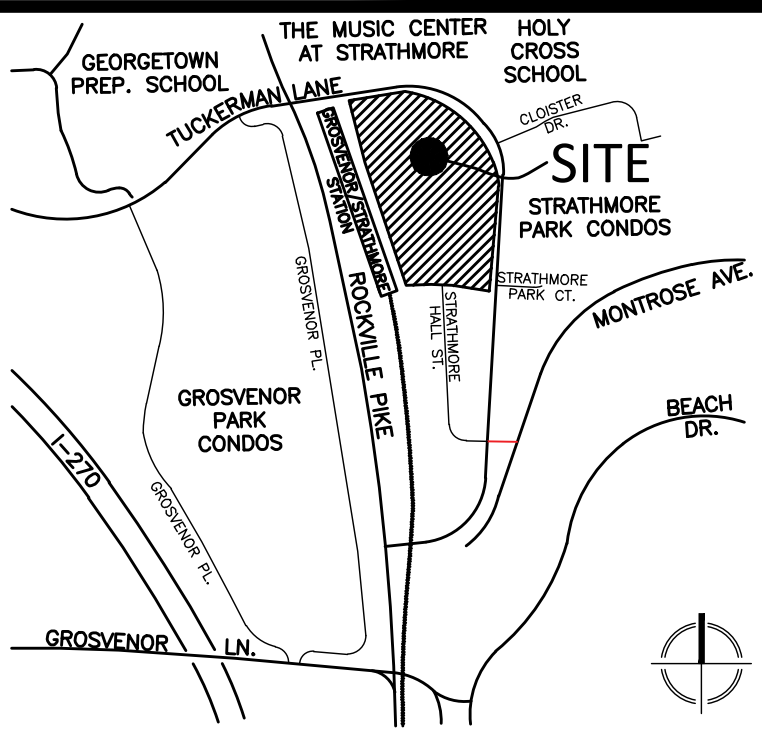
CLOISTER DRIVE

TUCKERMAN LANE

STRATHMORE

PARK CONDOS

VICINITY MAP
SCALE: 1" = 2,000'



VKA
ENGINEERS PLANNERS
LANDSCAPE ARCHITECTS SURVEYORS
VKA MARYLAND, LLC
20251 CENTURY BOULEVARD SUITE #400
GERMANTOWN, MARYLAND 20874
PHONE: (301) 916-4100
FAX: (301) 916-2262
GERMANTOWN, MD. TYSONS, VA.

PREPARED FOR:
FIVESQUARES DEVELOPMENT @ GROSVENOR METRO, LLC
1 THOMAS CIRCLE, NW
SUITE 200
WASHINGTON, DC, 20005
202-640-4445
SYLKE KNUPEL, PE

DESIGN CONSULTANTS
ARCHITECT
PERKINS EASTMAN DC
1 THOMAS CIRCLE, NW
SUITE 270
WASHINGTON, DC 20005
302-455-7450
MATT BELL

LANDSCAPE ARCHITECT
VKA MARYLAND, LLC
20251 CENTURY BOULEVARD
SUITE 400
GERMANTOWN, MD 20874
301.916.4100
JOSH SLOAN

ATTORNEY
LERCH, EARLY, BREWER
7600 WISCONSIN AVENUE
SUITE 700
BETHESDA, MD 20814
301.986.1300
STEVE ROBINS

TRAFFIC ENGINEER
WELLS + ASSOCIATES
1420 SPRING HILL ROAD
SUITE 610
TYSONS, VA 22102
703.917.6620
CHRIS TURNBULL

PLANNING, CIVIL ENGINEERING
VKA MARYLAND, LLC
20251 CENTURY BOULEVARD
SUITE 400
GERMANTOWN, MD 20874
301.916.4100
LAURENT MOUNAUD, PE

REVISIONS	DATE
1 INITIAL SUBMISSION	4/25/2018

PROFESSIONAL SEAL

I HEREBY CERTIFY THAT THESE DOCUMENTS WERE PREPARED OR APPROVED BY ME, AND THAT I AM A DULY LICENSED PROFESSIONAL ENGINEER UNDER THE LAWS OF THE STATE OF MARYLAND.
NAME: LAURENT MOUNAUD
LICENSE #: 36748
EXPIRATION DATE: JAN. 23, 2019

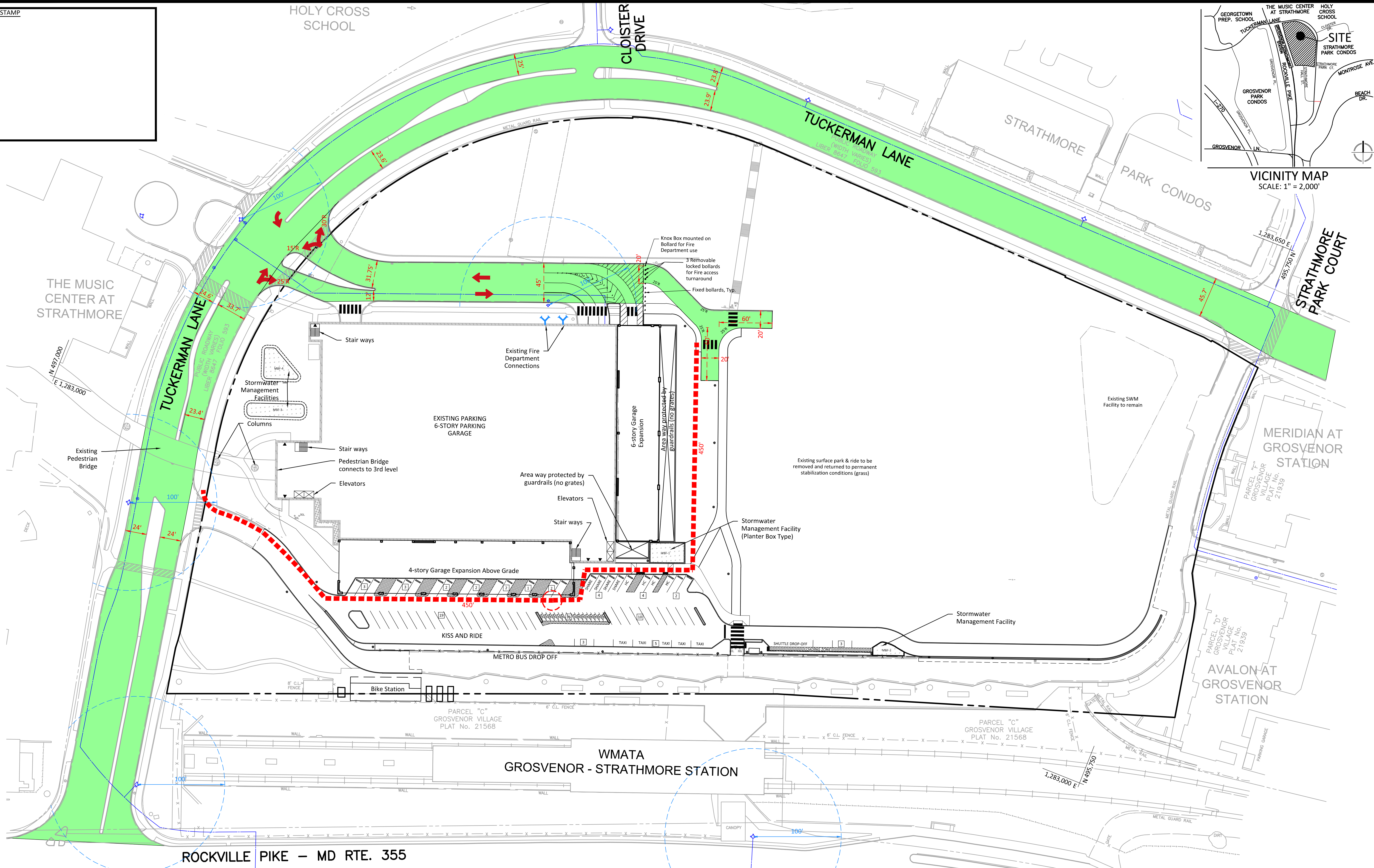
GROSVENOR - STRATHMORE WMATA GARAGE EXPANSION
4TH ELECTION DISTRICT
MONTGOMERY COUNTY, MARYLAND
WSSC GRID: 213NW05
TAX MAP: HP123

FIRE ACCESS PLAN

DRAWN BY: LWA
DESIGNED BY: IPD/LGM
DATE ISSUED: 04/25/18

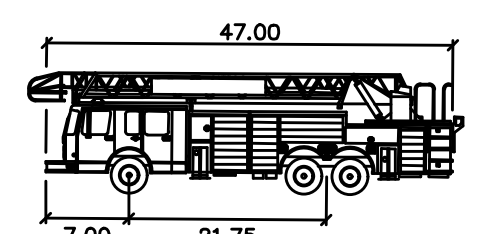
VKA PROJECT: VM 50226 A
APPLICATION NO.: MR2018026

SHEET NO. FIRE-001



LEGEND

- SUBJECT PROPERTY LIMITS
-
- FIRE DEPARTMENT CONNECTION
- PROP. LIGHT POLE
- EX. FIRE HYDRANT
- FIRE TRUCK MOVEMENT (AT 729 TRUCK)
- FIRE ACCESS PATH
- WALKABLE PATH



AT29
Width : 8.25
Track : 8.25
Lock to Lock Time : 6.00
Steering Angle : 33.20

