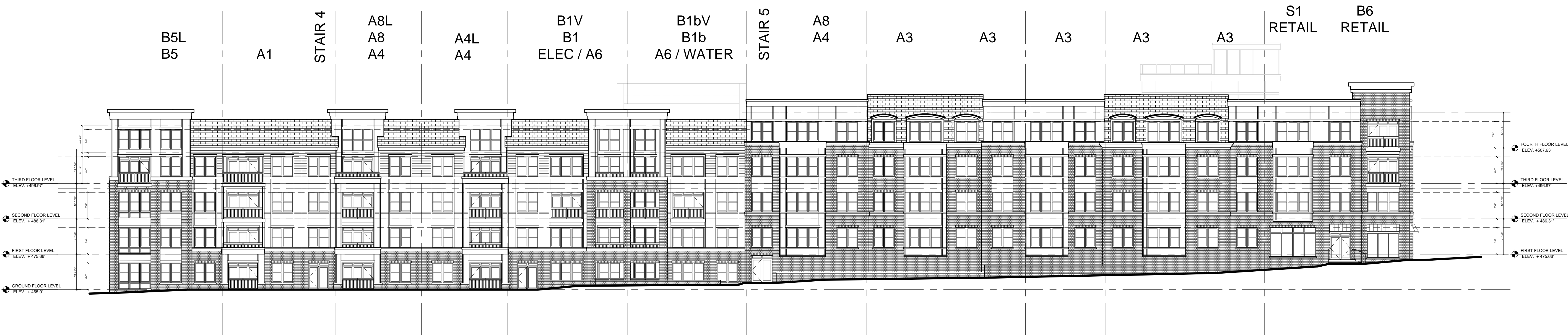
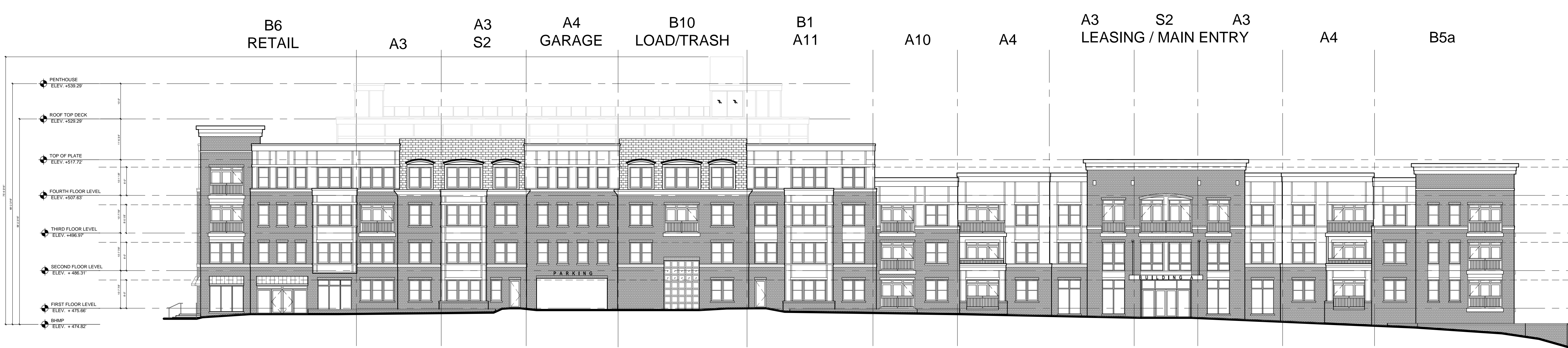


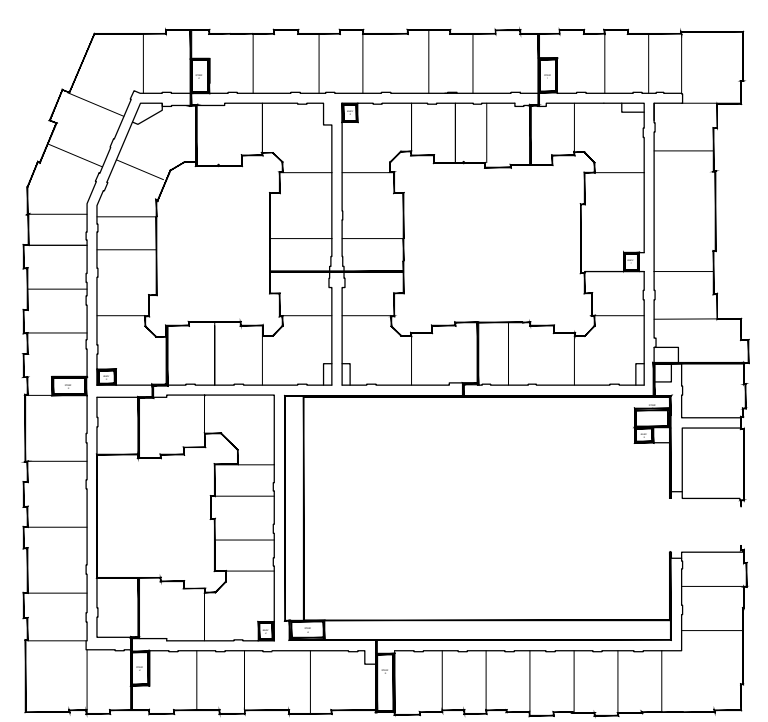
EXTERIOR ELEVATION KEY NOTES			
E1 STANDARD BRICK VENEER, RUNNING BOND - TYPE: TBD - MODULAR - COLOR: TBD	E9 FIBER CEMENT BOARD W/BATTENS - COLOR #5: TBD	E17 BALCONY RAILING - PAINTED ALUM. RAILING SYSTEM - 42" A.F.F. W/ BALUSTERS AT 4" O.C. MAX. - BY: TBD - STYLE: 1 1/2" TOP RAIL - COLOR: BLACK	E23 FIBER CEMENT BOARD W/BATTENS - COLOR: SW6417
E2 STANDARD BRICK VENEER, RUNNING BOND - TYPE: TBD - MODULAR - COLOR: TBD	E10 FIBER CEMENT BOARD W/BATTENS - COLOR #6: TBD	E18 PAINTED ALUM. STAIR RAILING SYSTEM - 42" A.F.F. W/ BALUSTERS AT 4" O.C. MAX. - BY: TBD - STYLE: 1 1/2" TOP RAIL 3/4" A.F.F. W/ 1/2" PICKETS - COLOR: BLACK	E24 BRICK SOLDIER COURSE HEAD
E3 STANDARD BRICK VENEER, RUNNING BOND - TYPE: TBD - MODULAR - COLOR: TBD	E11 FIBER CEMENT LAP SIDING - COLOR #1: TBD	E19 FABRIC CANOPY - COLOR:	E25 BRICK ROWLOCK SIL
E4 STANDARD BRICK VENEER, RUNNING BOND - TYPE: TBD - MODULAR - COLOR: TBD	E12 PAINTED FASCIA BOARD	E20 VINYL WINDOW	E26 DOWNSPOUT
E5 FIBER CEMENT BOARD W/BATTENS - COLOR #1: TBD	E13 CANVAS AWNING - COLOR:	E21 STOREFRONT WINDOW	E27 OVERFLOW SCUPPER
E6 FIBER CEMENT BOARD W/BATTENS - COLOR #2: TBD	E14 PAINTED SLATTED MTL CANOPY & FASCIA W/ TIE RODS - COLOR:	E22 PAINTED METAL INTAKE VENT - COLOR:	
E7 FIBER CEMENT BOARD W/BATTENS - COLOR #3: TBD	E15 BRICK ROWLOCK BAND		
E8 FIBER CEMENT BOARD W/BATTENS - COLOR #4: TBD	E16 FIBER CEMENT TRIM BOARD		



2 KEY WEST AVENUE ELEVATION
1/16" = 1'-0"



1 SIESTA KEY ELEVATION
1/16" = 1'-0"



- List of Amendment items for 82012013B
1. Install additional amenities and furniture on roof of approved garage for building A.
 2. Relocation of SWM facilities from between garage and MF building, to ground level, and adjustment of plant material in those locations.
 3. Loss of one residential unit, affecting floor plans.

DEVELOPER'S CERTIFICATE
The undersigned agrees to execute all the features of the Site Plan Approval No. 82012013B, including Approval Conditions, Development Program, and Certified Site Plan.

Developer's Name: Mallory Square Partners I, LLC
 Contact Person: Margaret Smith Ford
 Address: 3403 Cummings Lane, Maryland 20815
 Phone: 301.789.2045
 Signature: Margaret Smith Ford



CLIENT:
WOODFIELD INVESTMENTS
3403 Cummings Lane
Chevy Chase, MD 20815
(301) 789-2045
WWW.WFVNET.NET

CONSULTANT:
D



C

MALLORY SQUARE BUILDING A
SITE PLAN NUMBER: 820120130
ROCKVILLE, MD
CLIENT: WOODFIELD INVESTMENTS

NO.	DATE	DESCRIPTION
1	7/21/15	SITE PLAN SUBMISSION AMENDMENT A
2	8/11/15	SITE PLAN SUBMISSION FOR SIGNATURE
3	8/27/15	INITIAL CIP SUBMISSION
4	9/17/15	CLIENT CIP SUBMISSION
5	8/15/17	REVISION PER REVIEWER COMMENT
6	8/28/17	REVISION PER REVIEWER COMMENT
7	8/28/17	REVISION PER REVIEWER COMMENT
8	8/28/17	REVISION PER REVIEWER COMMENT

SHEET TITLE:
ELEVATIONS

PROJECT NUMBER: 20100650.02
 DRAWN BY: BF
 CHECKED BY:
 SHEET NUMBER:
A-200