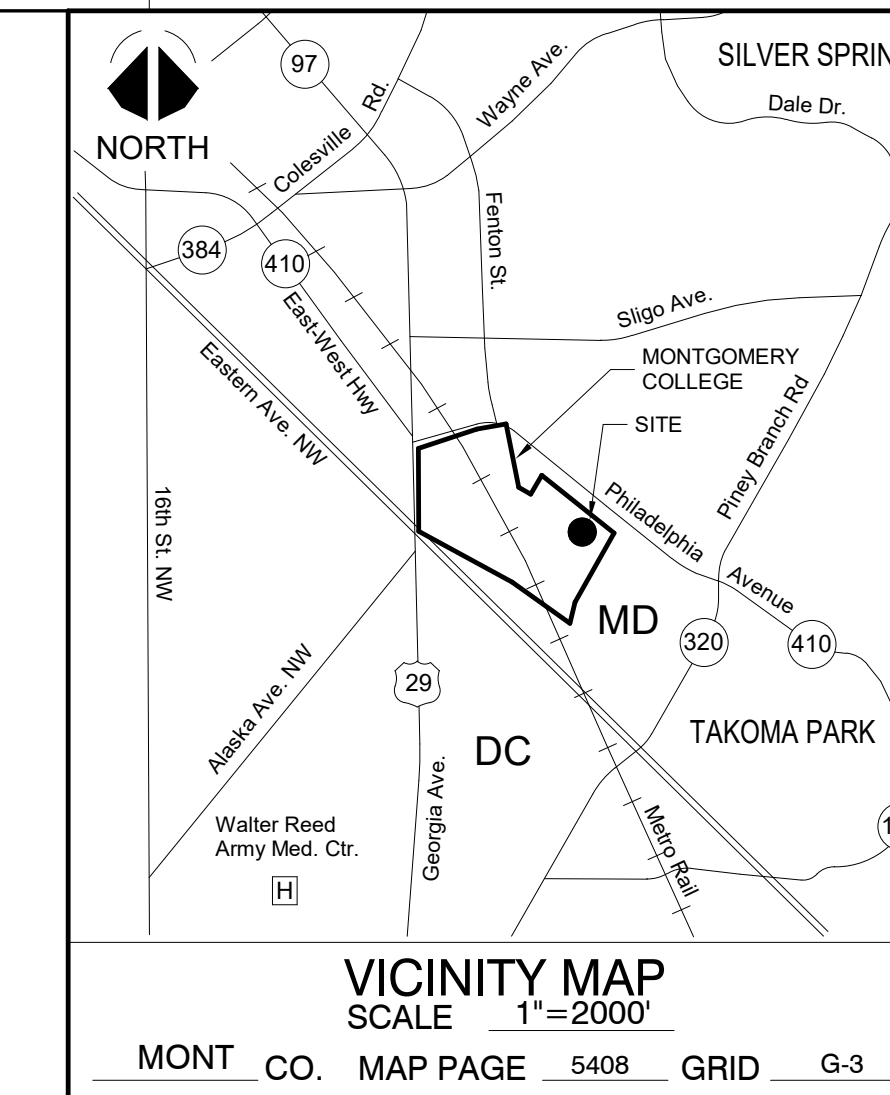
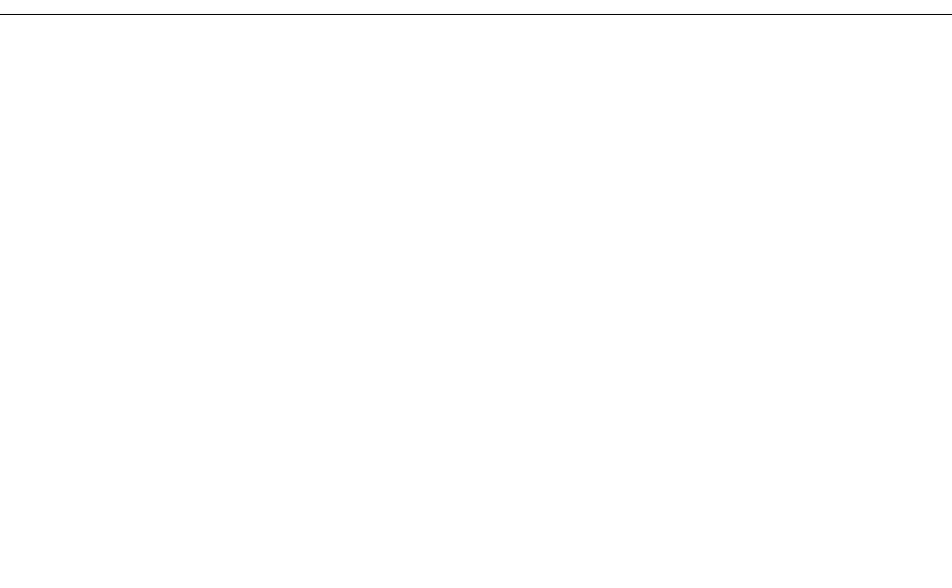
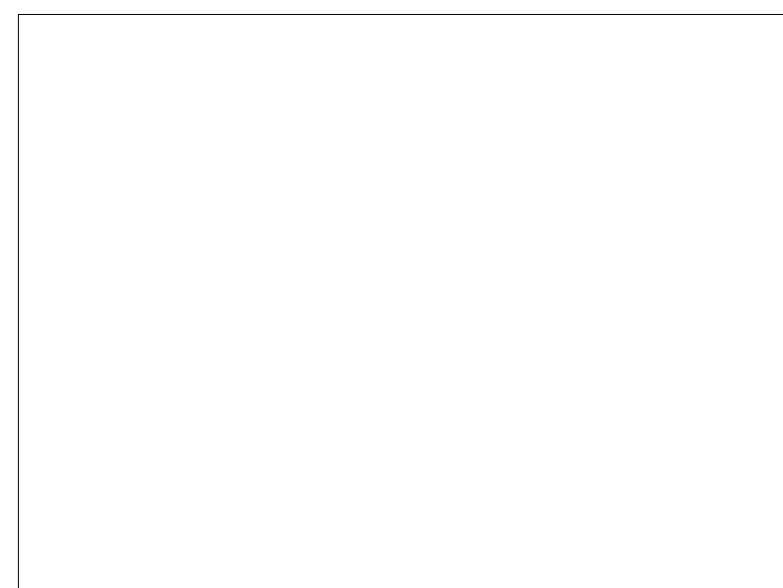


M-NCPPC APPROVAL STAMP:

PROPERTY OWNERS CERTIFICATE:



PROJECT NAME:  
**Catherine and Isiah Leggett Math and Science Building**

PROJECT ADDRESS:  
Montgomery College  
Takoma Park / Silver Spring Campus  
7600 Takoma Avenue  
Takoma Park, MD 20912

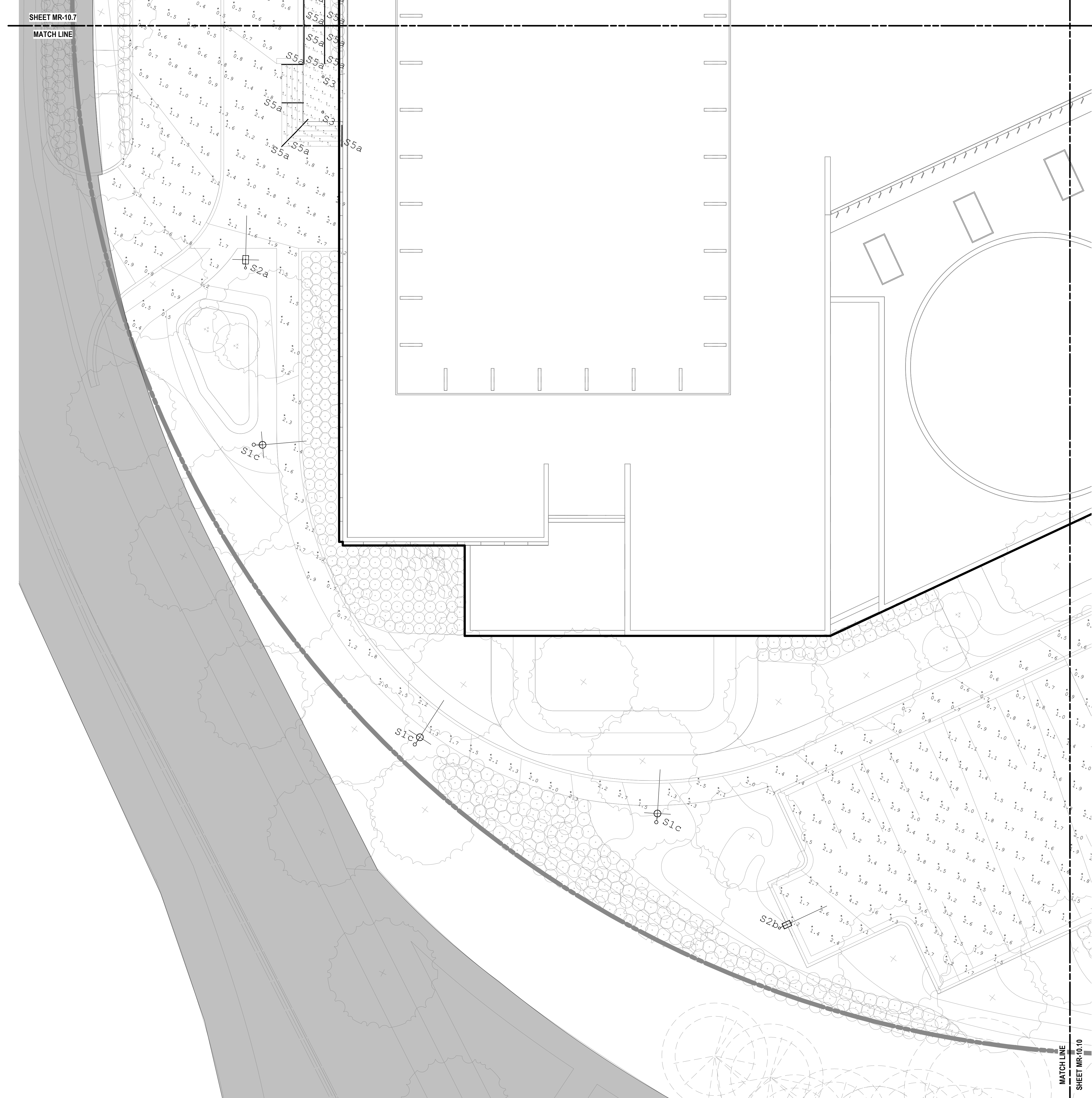
PROPERTY OWNER:  
Montgomery College  
9221 Corporate Blvd.  
Rockville, MD 20850

PRIMARY CONTACT:  
Kevin Johnson (SMITHGROUP)  
1700 New York Ave NW #100  
Washington DC, 20006  
e-mail: kevin.johnson@smithgroup.com  
phone: 202-974-4589

APPLICANT:  
Marvin D. Mills, Jr. (Montgomery College)  
9221 Corporate Blvd.  
Rockville, MD 20850  
e-mail: marvin.mills@montgomerycollege.edu  
phone: 240-567-9141

ENGINEER / PLAN PREPARER:  
Mike Wychulis (AMT Engineering)  
800 King Farm Blvd.  
Rockville, MD 20850  
e-mail: mwyuchulis@amtengineering.com  
phone: 301-881-2545

Montgomery College Project #: FP16-077  
Tax Map Grid #: JN32  
WSSC # (New Building): Pending Service  
WSSC # (Science South): 0064378  
WSSC # (Falcon Hall): 2393379



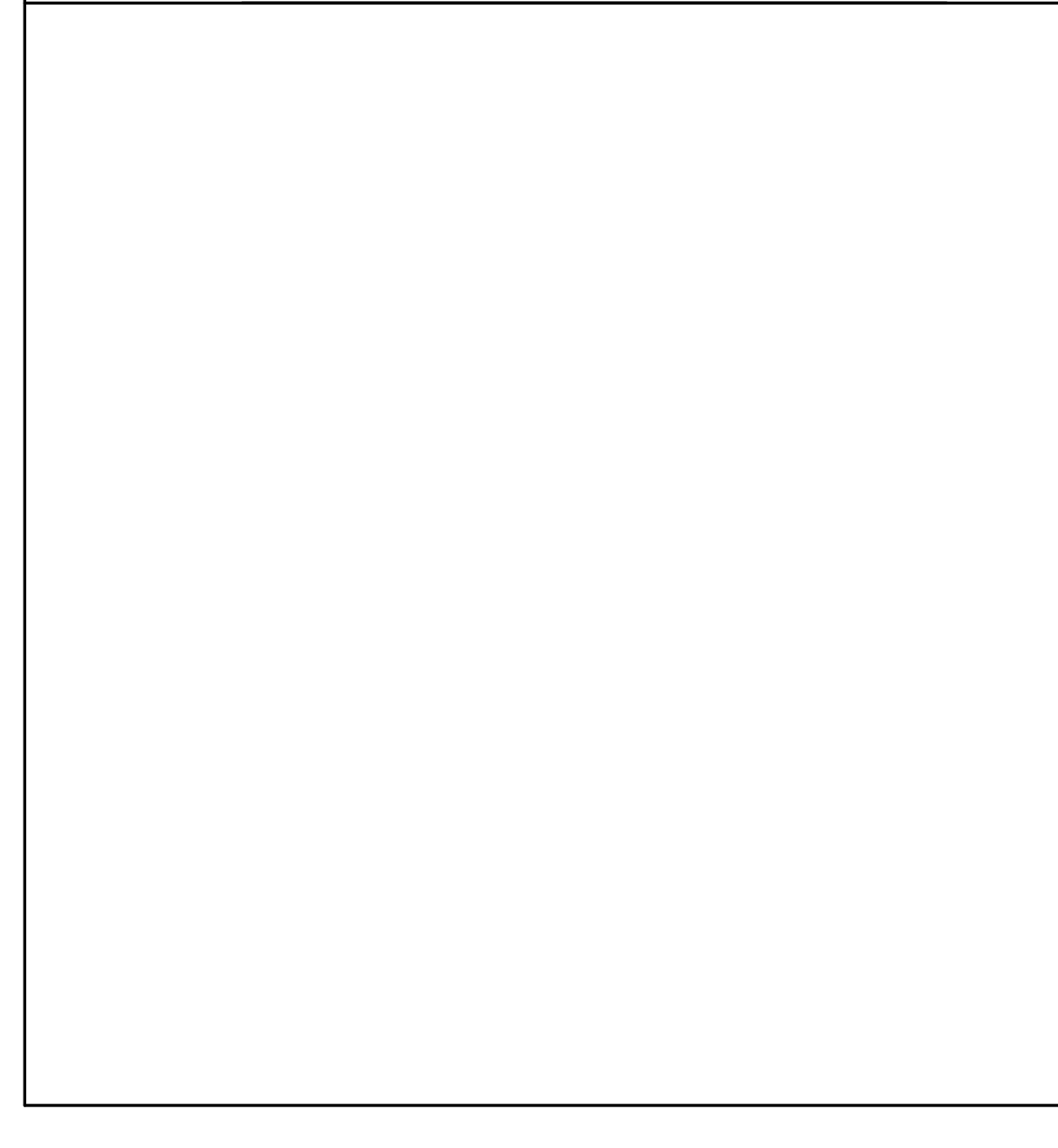
### LEGEND

	LIGHTING FIXTURE TYPE DESIGNATION. "1" INDICATES SPECIFIC FIXTURE TYPE. AND "X" INDICATES SPECIFIC DISTRIBUTION OPTIC. REFERENCE LUMINAIRE SCHEDULE FOR ADDITIONAL SPECIFICATIONS
	LIGHTING FIXTURE AIMING/DIRECTIONAL INDICATION
	EXTERIOR RECESSED DOWNLIGHT, IP66 RATED
	EXTERIOR RATED, ROUND WITH STRAIGHT HOOD, LED, POLE FIXTURE
	EXTERIOR RATED, ROADWAY RECTANGULAR, LED, POLE FIXTURE WITH NEIGHBOR FRIENDLY OPTIC
	EXTERIOR RATED, LINEAR LED LIGHT INTEGRATED HANDRAIL
	EXTERIOR RATED, RECESSED LED STEPLIGHT WITH LOUVERED SHIELDING
	EXTERIOR RATED, SURFACE MOUNTED, RECTANGULAR, LED WALLPACK
	SINGLE PHOTOMETRIC CALCULATION POINT (UNIT IN FOOTCANDLES)
	SOLID LINE INDICATES OUTLINE OF PROPOSED BUILDING
	DASHED LINE INDICATES MATCHLINE BETWEEN ENLARGED SITE AREAS
	DOTTED LINE INDICATES AREAS THAT CORRESPONDS WITH THE LABELS GIVEN TO THE ILLUMINANCE CALCULATION SHOWN IN THE CALCULATION SUMMARY TABLE

### GENERAL SHEET NOTES

- A. COORDINATE WITH LOCAL UTILITY FOR ALL SITE SERVICE REQUIREMENTS.
- B. CONTACT LOCAL UTILITY TO IDENTIFY ALL EXISTING UNDERGROUND UTILITIES.
- C. GRAY SHADING INDICATES OUT OF SCOPE AREAS
- D. SEE HARDSCAPE DETAILS FOR POLE MOUNTED FIXTURE TYPE SERIES S1 AND S2 MOUNTING DETAILS.
- E. SITE ILLUMINATION DESIGNED TO IESNA STANDARDS.

### ○ SHEET KEYNOTES



### DESIGN TEAM

**SMITHGROUP**

1700 NEW YORK AVENUE NW  
SUITE 100  
WASHINGTON, DC 20006  
202.842.2100  
www.smithgroup.com

**AMT Engineering**  
CIVIL ENGINEERS  
800 King Farm Boulevard, 4th Floor  
Rockville, MD 20850  
301-881-2545

**Cagley & Associates**  
STRUCTURAL ENGINEERS  
6141 Executive Blvd.  
Rockville, MD 20852  
301-881-9550

**Mahan Rykiel**  
LANDSCAPE ARCHITECTS  
3300 Clipper Mill Road, Suite 200  
Baltimore, MD 21211  
410-226-6001

**SPeKSYS**  
AV. IT. SECURITY  
7257 Parkway Drive, suite 260  
Hanover, MD 21076  
410-712-0390

ISSUED FOR	REV	DATE

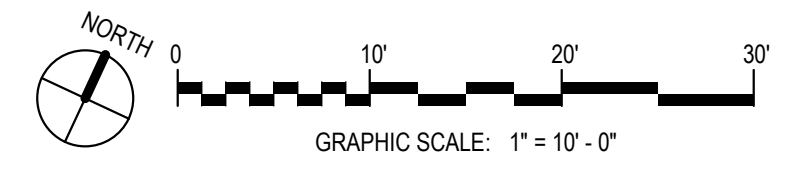
SEALS AND SIGNATURES  
CERTIFICATE OF REGISTERED ENGINEER / SURVEYOR OR  
OTHER APPROPRIATE LICENSE INDIVIDUAL.



SHEET TITLE  
**ELECTRICAL SITE PLAN  
AREA B**

PROJECT NUMBER: 12543.000  
**MR-10.8**

Plot Date: 12/14/2018 11:16:05 AM Author



1 ELECTRICAL SITE PLAN - AREA B  
SCALE: 1" = 10'-0"