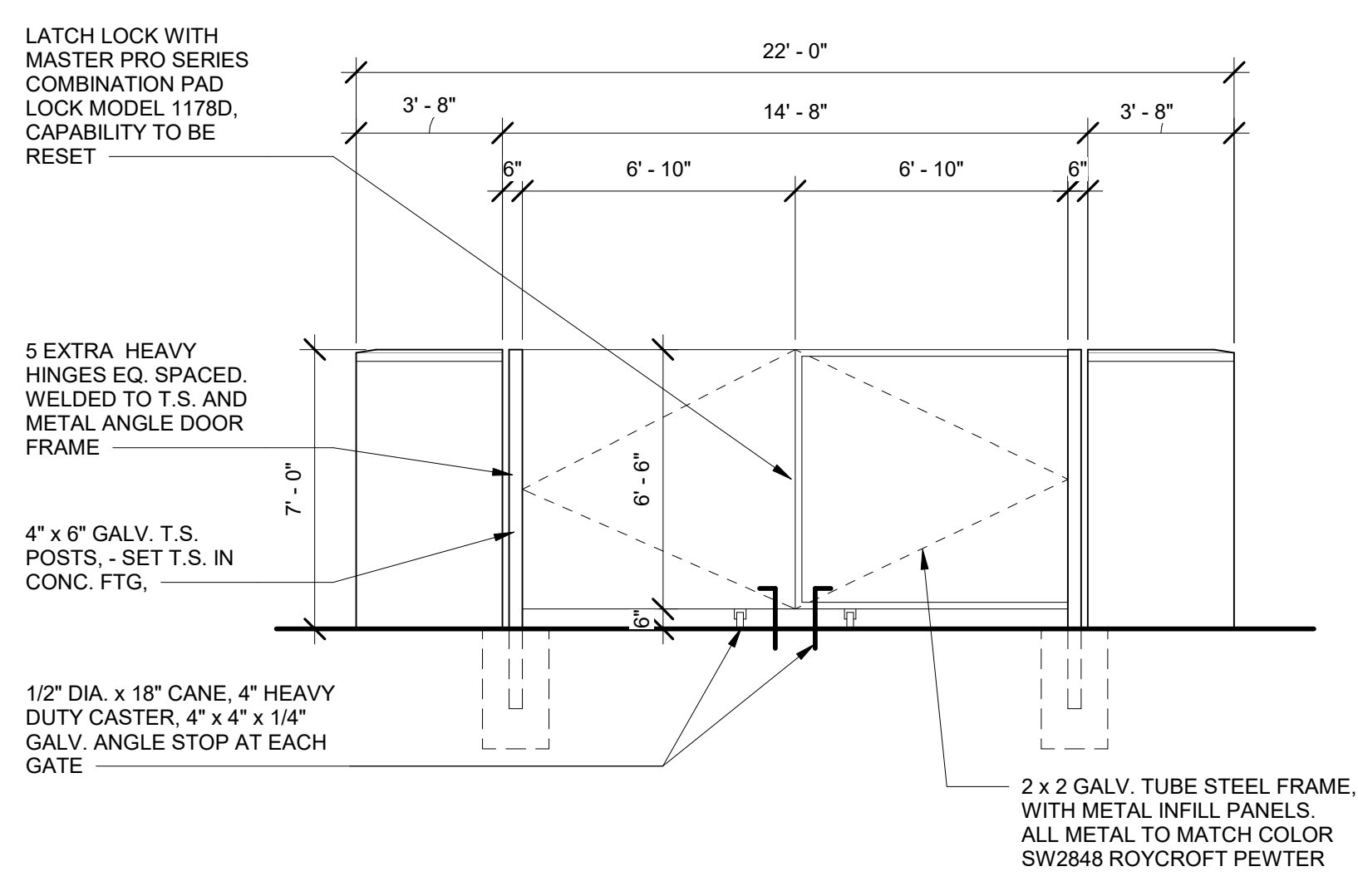
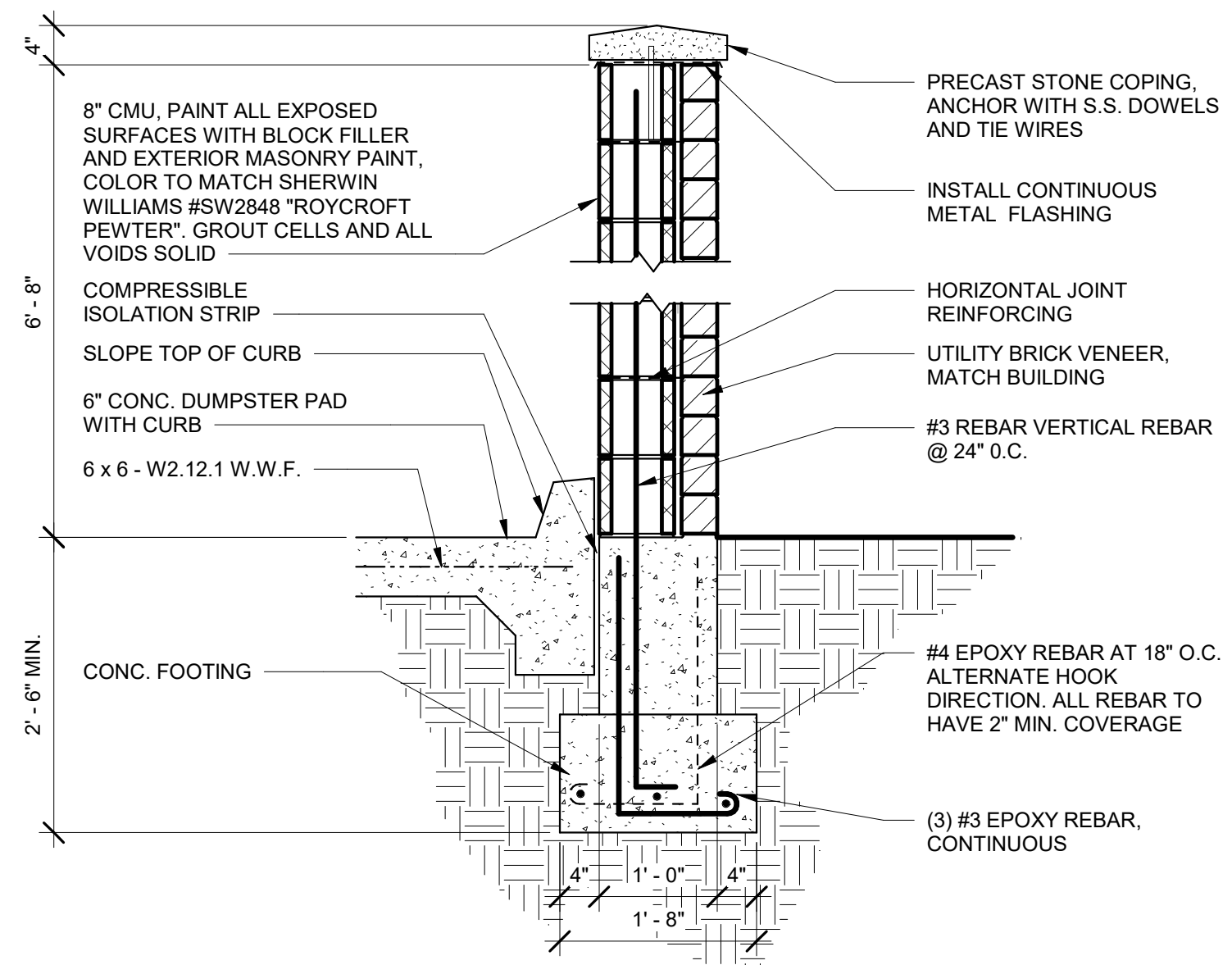


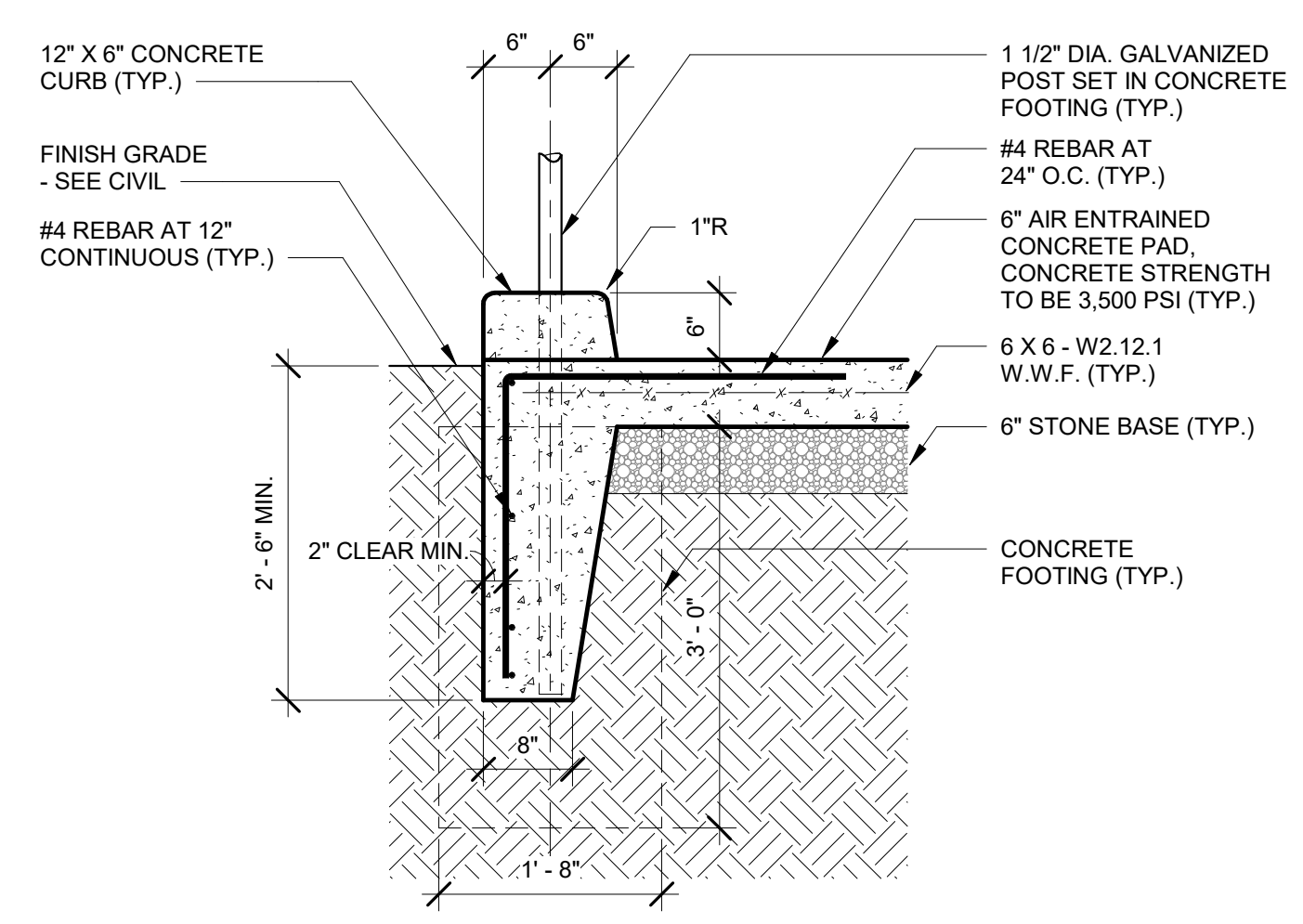
1 TRASH ENCLOSURE
1/4" = 1'-0"



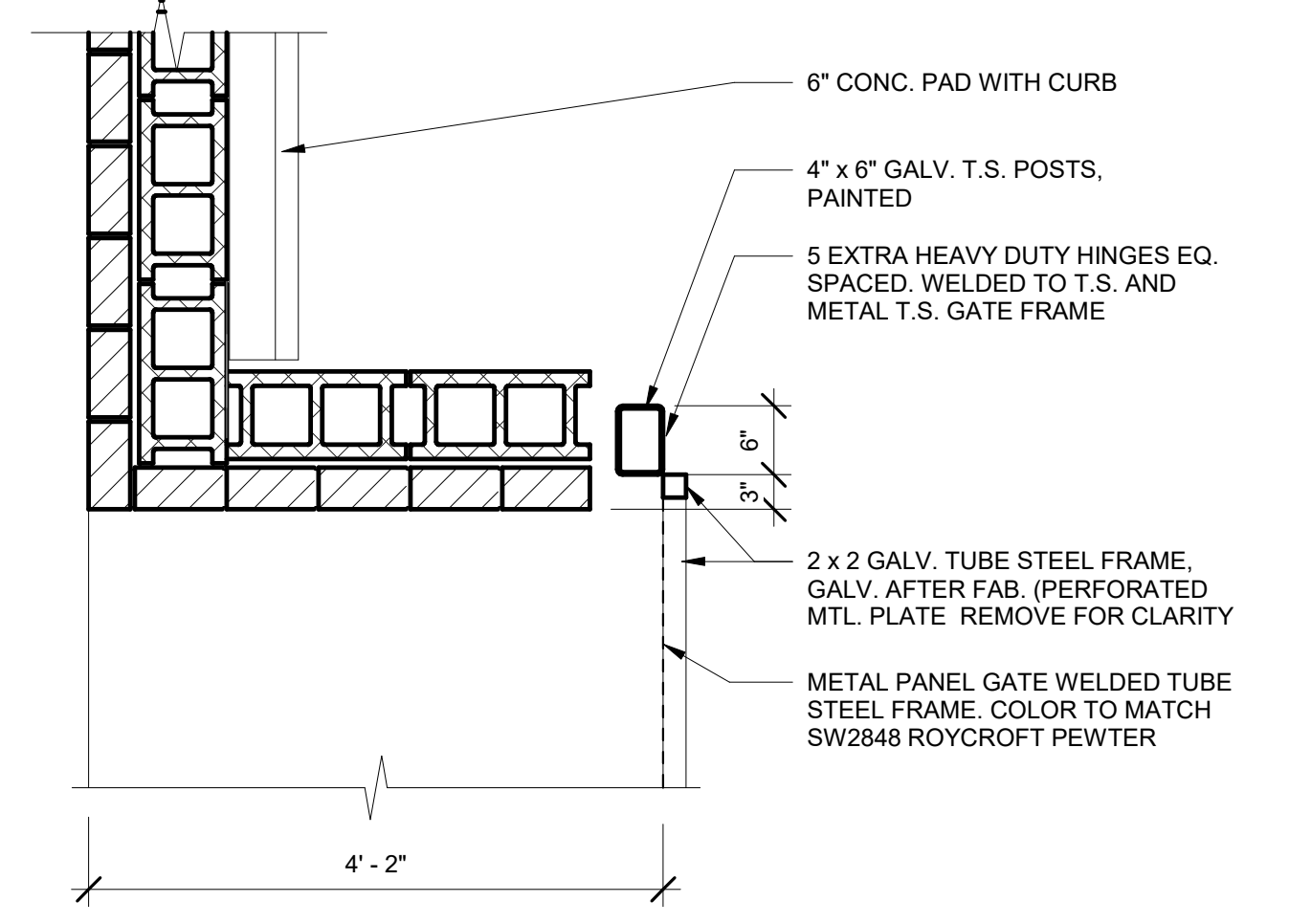
2 TRASH ENCLOSURE GATE ELEVATION
1/4" = 1'-0"



3 TRASH ENCLOSURE - WALL SECTION
3/4" = 1'-0"



4 TRASH ENCLOSURE CONC. PAD DETAIL
3/4" = 1'-0"



5 TRASH ENCLOSURE - GATE DETAIL
3/4" = 1'-0"



architecture incorporated

1902 campus commons drive
suite 101
reston, virginia 20191
Tel: 703.476.3900
Fax: 703.264.0733
www.archinc.com

CONSTRUCTION DOCUMENTS FOR:

LIDL USA, LLC

LIDL MONTGOMERY VILLAGE

Project: Project Number

Revision Schedule		
#	Description	Date

- GENERAL NOTES
- CONTRACTORS AND SUBCONTRACTORS SHALL VERIFY ALL REVISED DIMENSIONS AND NOTIFICATIONS FROM THE ARCHITECT OF ANY DIMENSIONAL ERRORS, OMISSIONS OR CONFLICTS BEFORE BEGINNING OR FABRICATION OF ANY WORK.
 - DO NOT SCALE THESE DRAWINGS.

SEAL:

DEVELOPER'S CERTIFICATE

THE UNDERSIGNED AGREES TO EXECUTE ALL THE FEATURES OF THE PLAN APPROVAL NO. 802000039 INCLUDING APPROVAL CONDITIONS, DEVELOPMENT PROGRAM, AND CERTIFIED SITE PLAN.

DEVELOPER: LIDL US, LLC COMPANY CONNOR BEVANS CONTACT PERSON
ADDRESS: 3500 S CLARK STREET, ARLINGTON, VA 22202
PHONE: (703) 424-8741
EMAIL: CONNOR.BEVANS@LIDL.US
SIGNATURE: _____

DESIGN DEVELOPMENT
DATE: 01.16.2019
SCALE: As indicated
SHEET NAME: DUMPSTER ENCLOSURE DETAILS