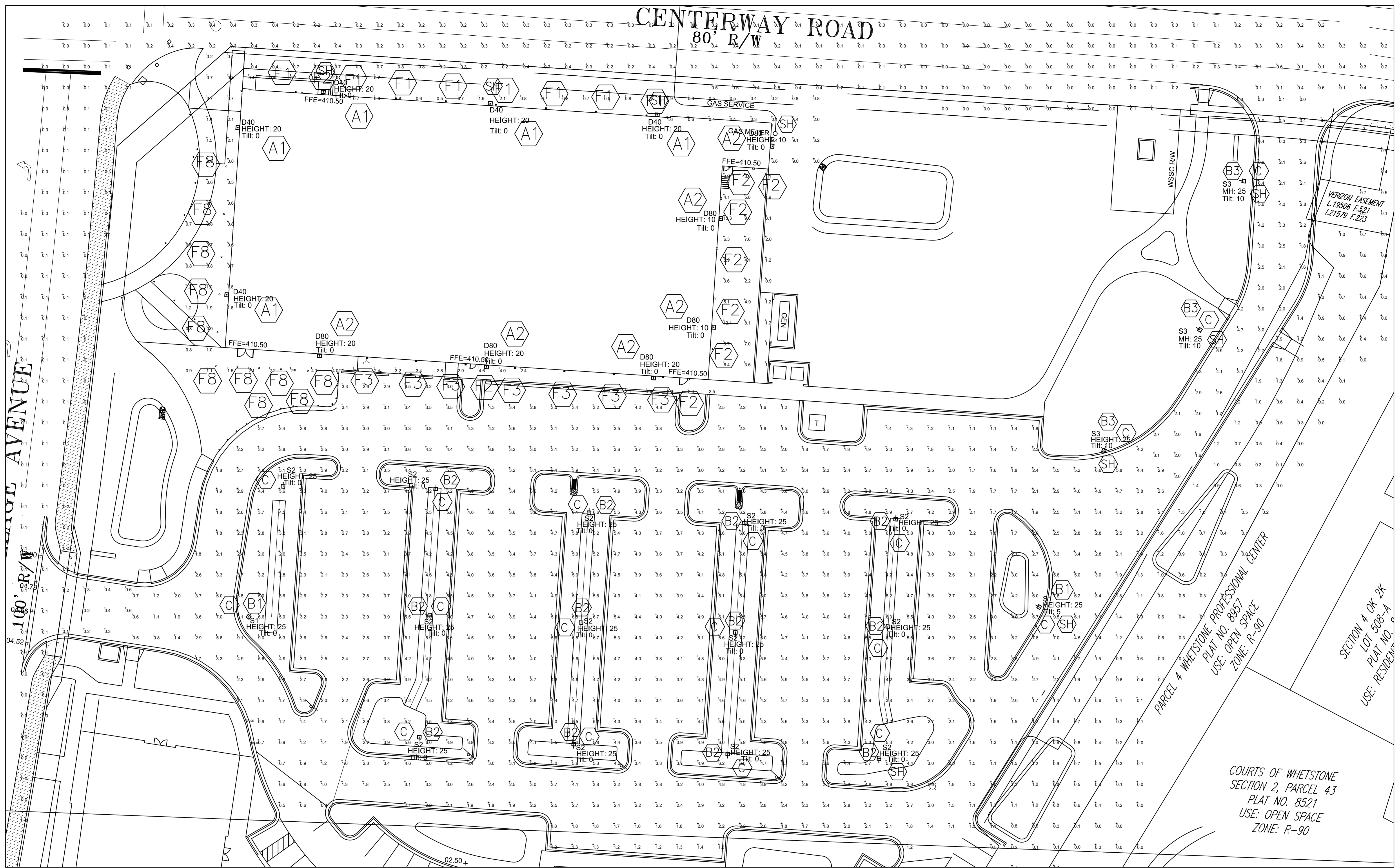




Digitally signed
 by Sam Davati
 Date: 2020.03.20
 13:12:41 -0400

LIDL US, LLC
 MR. CONNOR BEVANS
 3500 SOUTH CLARK STREET
 ARLINGTON, VA 22202
 (703) 424-8741
 CONNOR.BEVANS@LIDL.US



LIDL AND PARKING LOT PHOTOMETRIC CALCULATIONS - PHASE 1

SCALE: 1"=20'-0"

Calculation Summary - PHASE 1								
Label	CalcType	Units	Avg	Max	Min	Avg/Min	Max/Min	
CalcPts	1	Illuminance	Fc	1.72	7.8	0.2	8.6	39

SH PROVIDE A 90 DEGREE SHIELD IN THE FIXTURE LENSED AREA.

SHIELD IS PROVIDED TO REDUCE THE EXCESSIVE LIGHTING INTO ADJACENT PROPERTY.

LIGHTING FIXTURE SCHEDULE									
SYMBOL	TYPE	LUMPS		CRF	HEIGHT	REMARKS AND MOUNTING AND CATALOG NUMBER			
		NO.	WATTAGE						
A1	DECO LIGHTING JUDGERNAUT MODERN FULL CUTOFF LED WALL PACK D464-L-42-24-U-2	1	24.1	LED	20'				
A2	DECO LIGHTING JUDGERNAUT MODERN FULL CUTOFF LED WALL PACK D464-L-60-40-U-2	1	77.4	LED	20'/10'				
B1	LINEORE LED LAMP SITE LIGHTER LL-SLT-160-150W-SOK-13-LW-059	1	148.52	LED	25'				
B2	LINEORE LED LAMP SITE LIGHTER LL-SLT-160-150W-SOK-13-LW-062	1	150	LED	25'				
B3	LINEORE LED LAMP SITE LIGHTER LL-SLT-160-150W-SOK-13-LW-062	1	150	LED	25'				
C	TECHLIGHT LIGHT POLE 2" SP. 4" SQUARE 11 GAUGE POLE 23" STEEL - 8511-850C-1000-830-FLOOR MOUNTED UP LIGHT	1			25'				
F1	TRILUX - 8511-850C-1000-830-FLOOR MOUNTED UP LIGHT	1	13	LED	0'				
F2	DECO LIGHTING D464-L-42-50-U-E-W- WALL PACK	1	42	LED	9'				
F3	TRILUX - 8511-850C-1000-830-FLOOR MOUNTED UP LIGHT	1	16.5	LED	9'				
F8	INFILUX - 4" ROUND LED - 8000K - 150LM - 120V - 1000-830-FLOOR MOUNTED UP LIGHT	1	13.1	LED	9'				

Professional Certification. I hereby certify that these documents were prepared or approved by me, and that I am a duly licensed professional engineer under the laws of the State of Maryland License No. 20651, Expiration Date: 11-25-2020; Commonwealth of Virginia License No. 024347 and District of Columbia License No. 10405

D2 ENGINEERING, LLC
 MECHANICAL PLUMBING ELECTRICAL
 19522 CLUB HOUSE ROAD TEL. - 301-208-9576
 MONTGOMERY VILLAGE, MARYLAND 20886 FAX. - 301-208-9405

DEVELOPER'S CERTIFICATE
 THE UNDERSIGNED AGREES TO EXECUTE ALL THE FEATURES OF SITE PLAN APPROVAL NO. 82020000 INCLUDING APPROVAL, CONDITIONS, DEVELOPMENT PROGRAM, AND CERTIFIED SITE PLAN.
 DEVELOPER: LIDL US, LLC COMPANY CONNOR BEVANS CONTACT PERSON
 ADDRESS: 3500 S CLARK STREET, ARLINGTON, VA 22202
 PHONE: (703) 424-8741
 EMAIL: CONNOR.BEVANS@LIDL.US
 SIGNATURE: *Connor Bevens*

REVISIONS		
NO.	DESCRIPTION	DATE

COURTS OF WHETSTONE SECTION 2, PARCEL 43 PLAT NO. 8521 USE: OPEN SPACE ZONE: R-90

TAX MAP F041 WSSC 228V10
 PLATS 9651 & 9993
 8TH ELECTION DISTRICT MONTGOMERY COUNTY MARYLAND

PARCEL 3C, LOT 27, & LOTS 29-35 MONTGOMERY VILLAGE WHETSTONE PROFESSIONAL CENTER

PROJ. MGR SD
 DRAWN BY JF
 SCALE 1"=20'
 DATE 04.15.2020

PHOTOMETRIC CALCULATIONS PHASE 1

EL-1
 PROJECT NO. 18.291.11
 SHEET NO. 1 OF 5