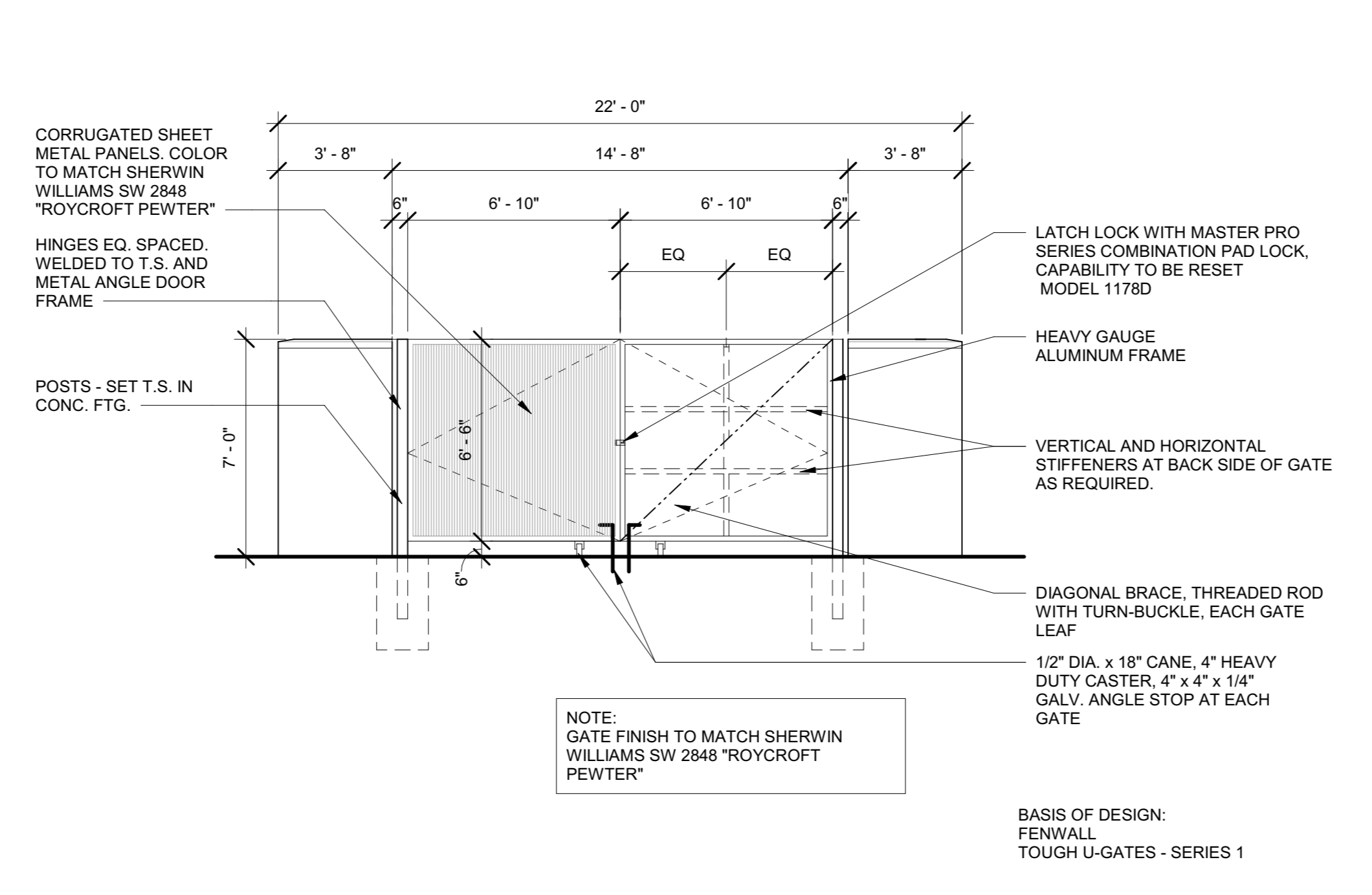
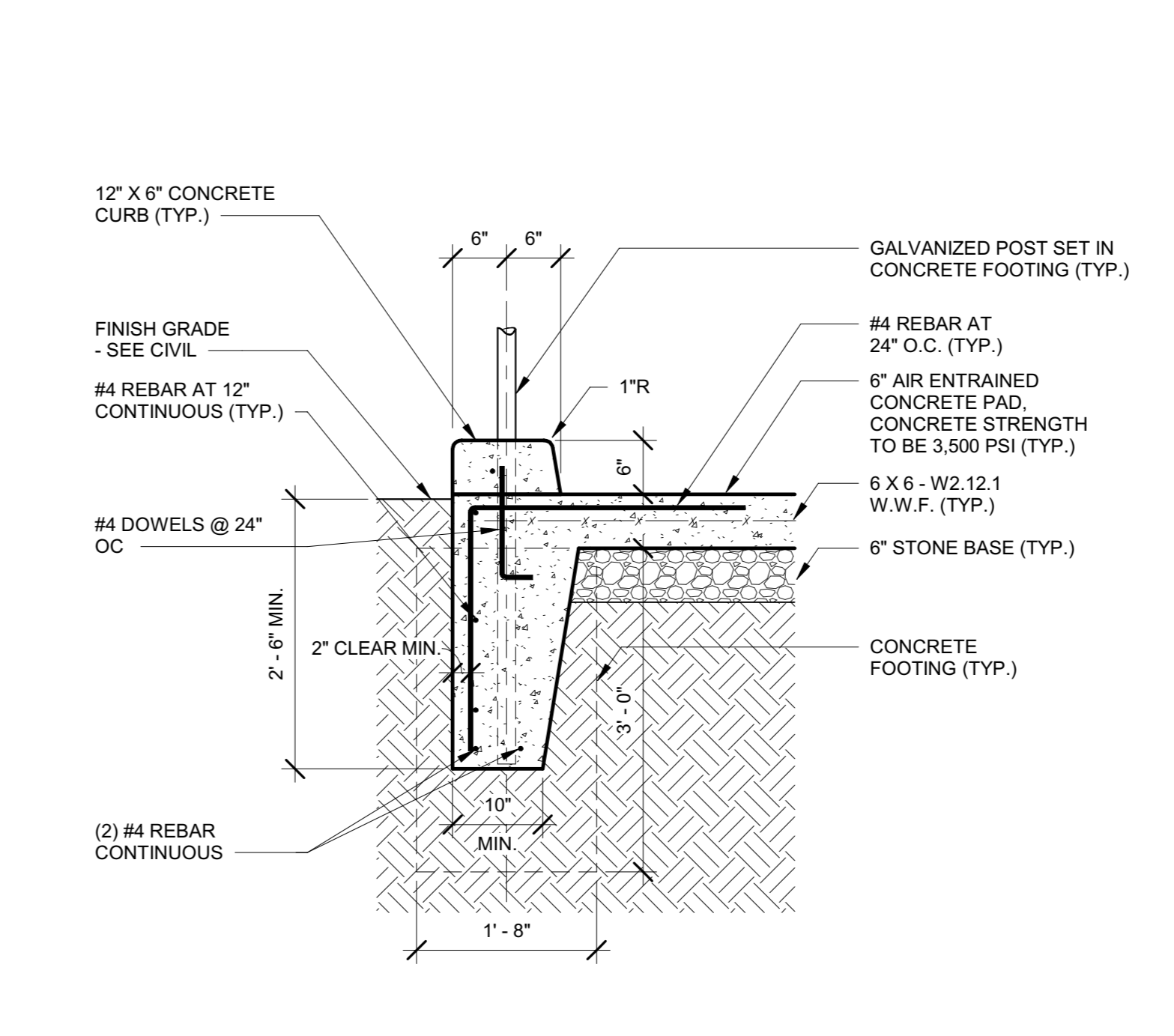


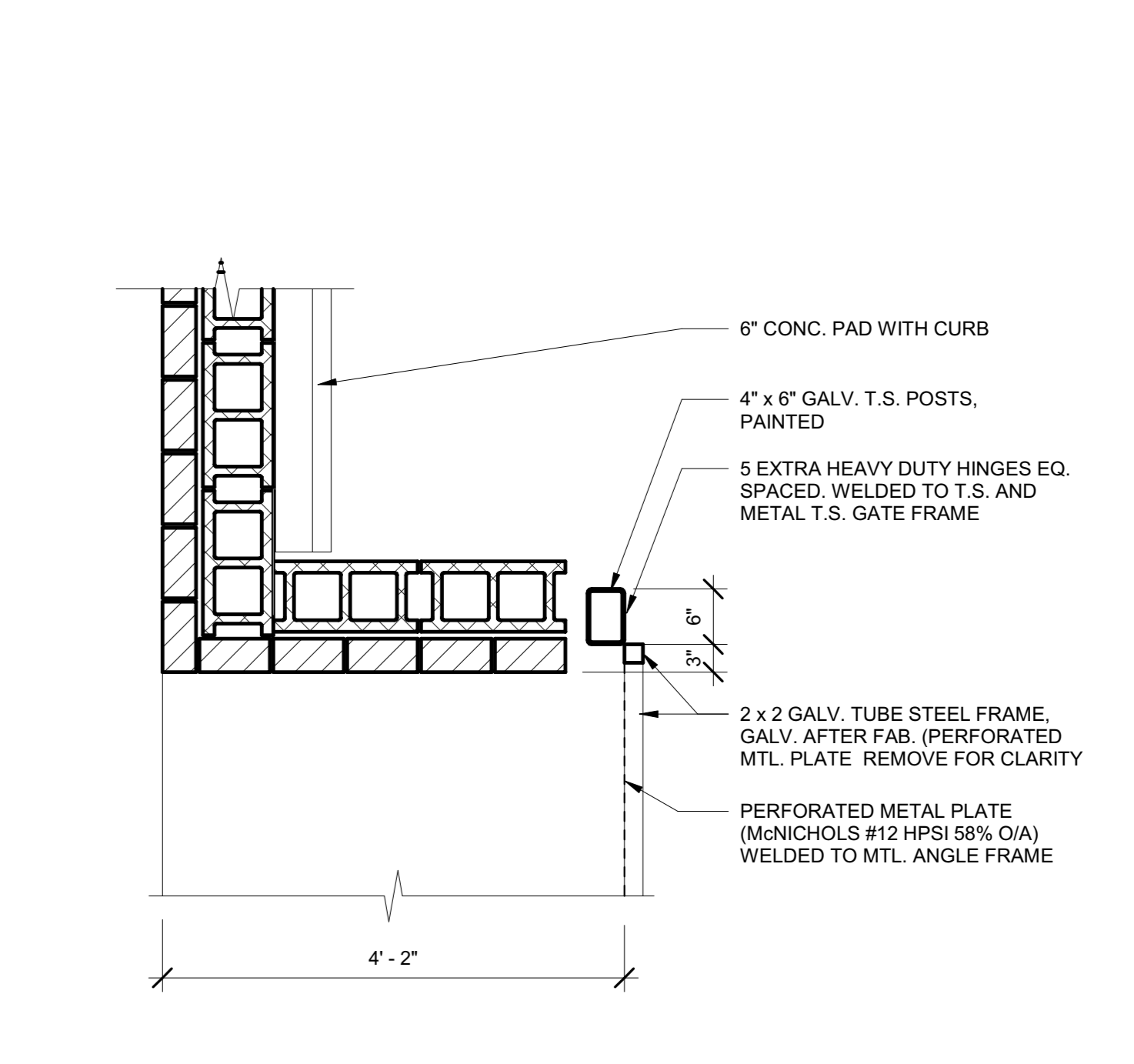
1 TRASH ENCLOSURE
1/4" = 1'-0"



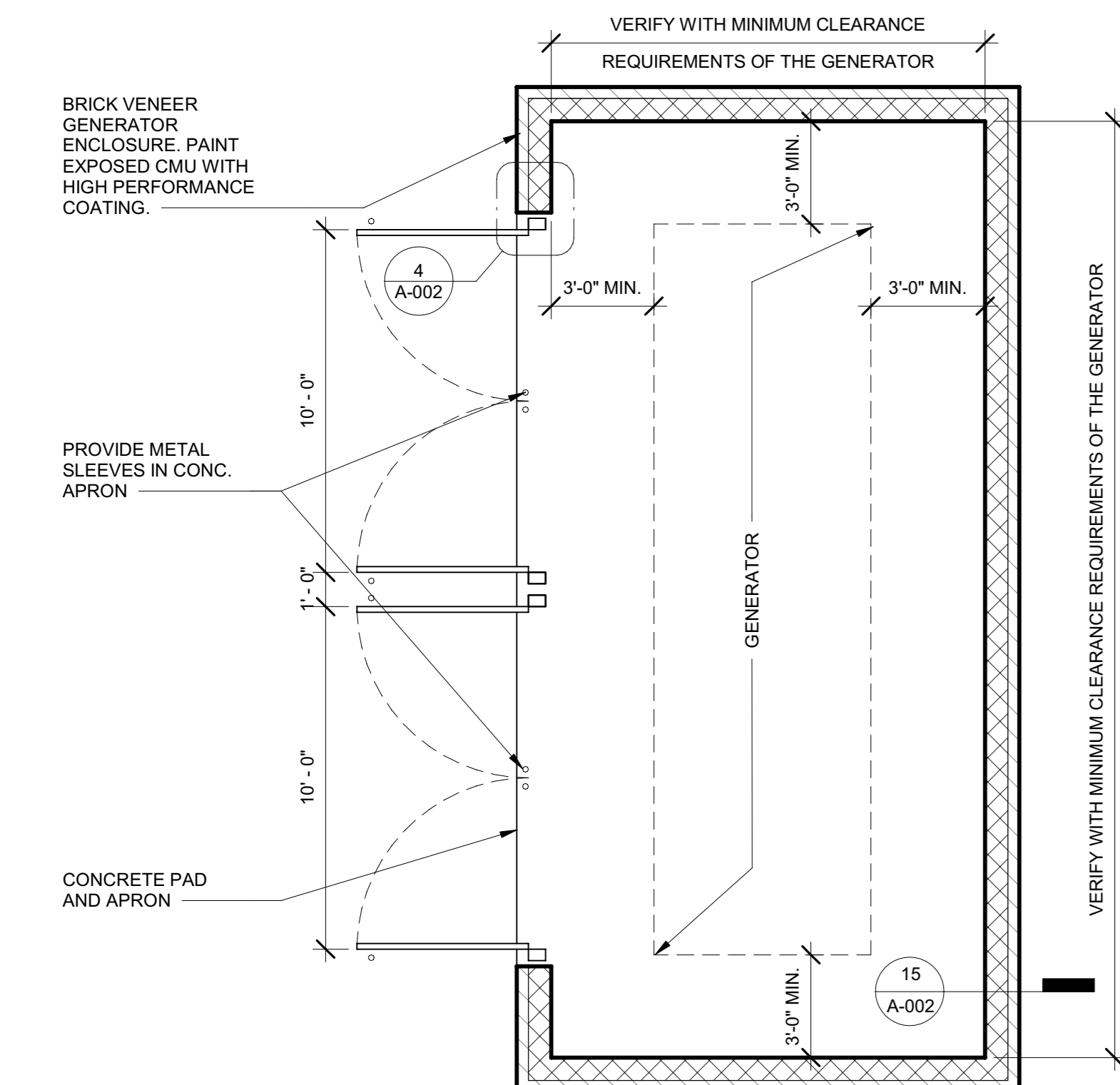
2 TRASH ENCLOSURE GATE ELEVATION
1/4" = 1'-0"



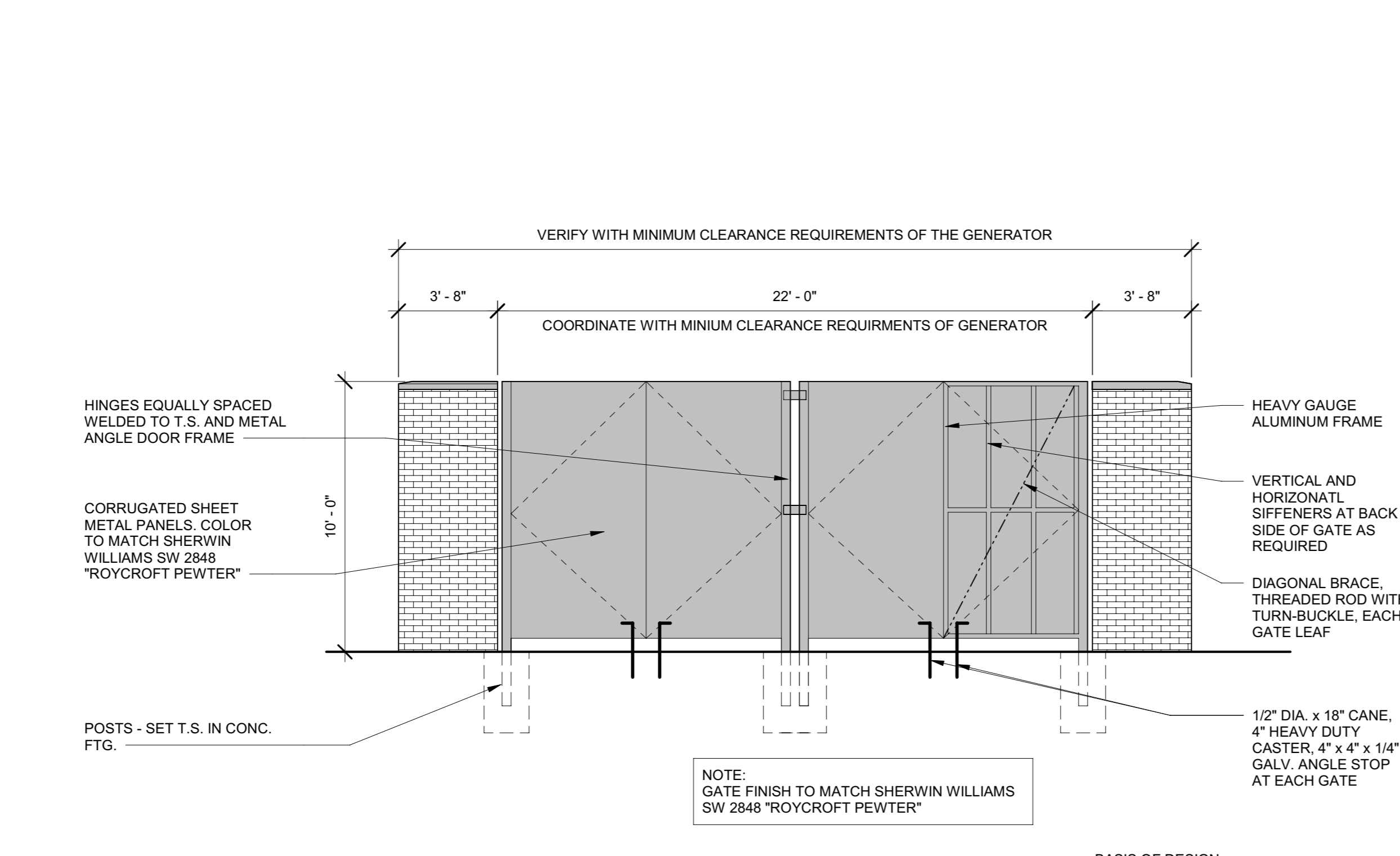
3 TRASH ENCLOSURE CONC. PAD DETAIL
3/4" = 1'-0"



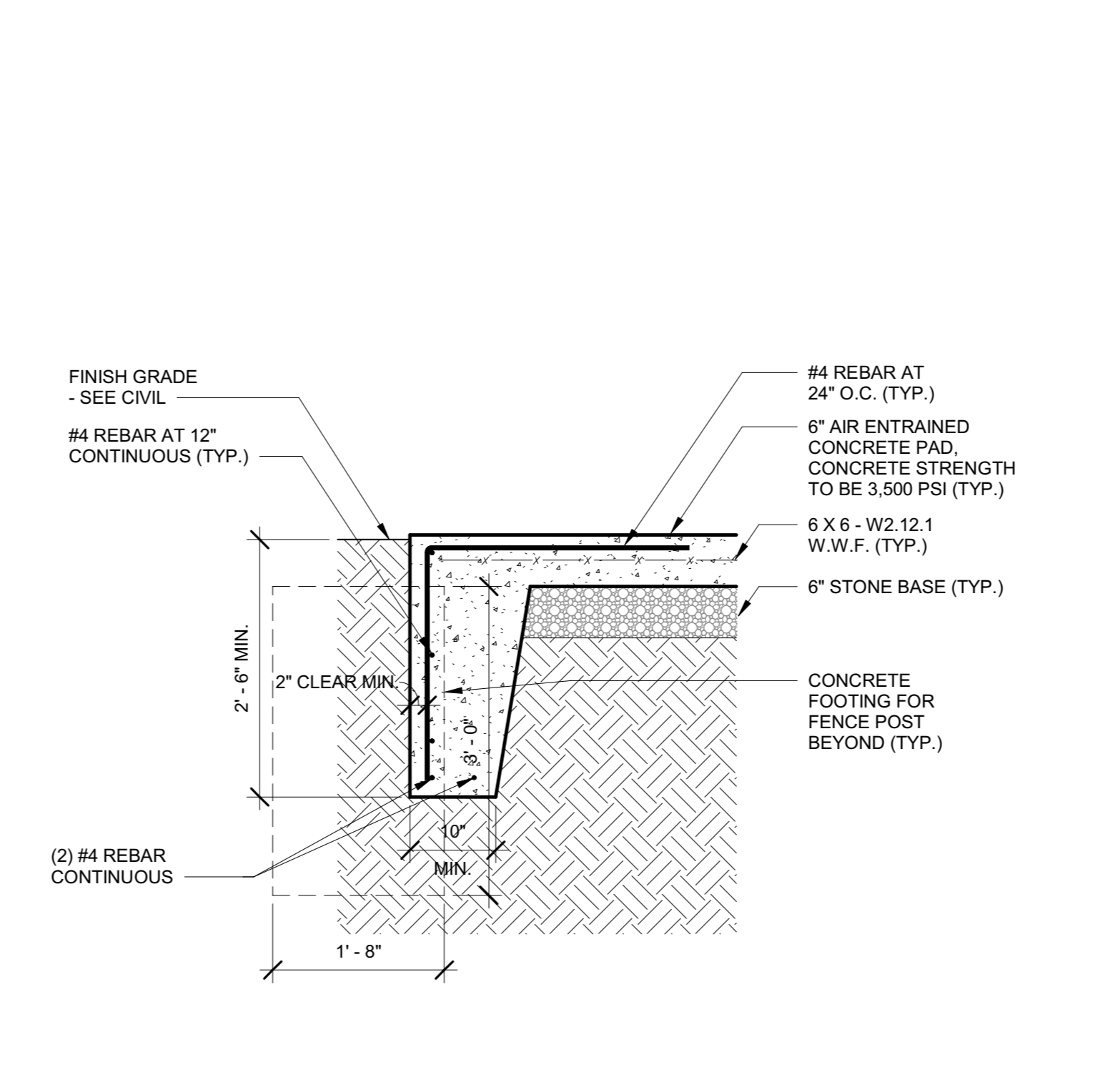
4 TRASH ENCLOSURE - GATE DETAIL
3/4" = 1'-0"



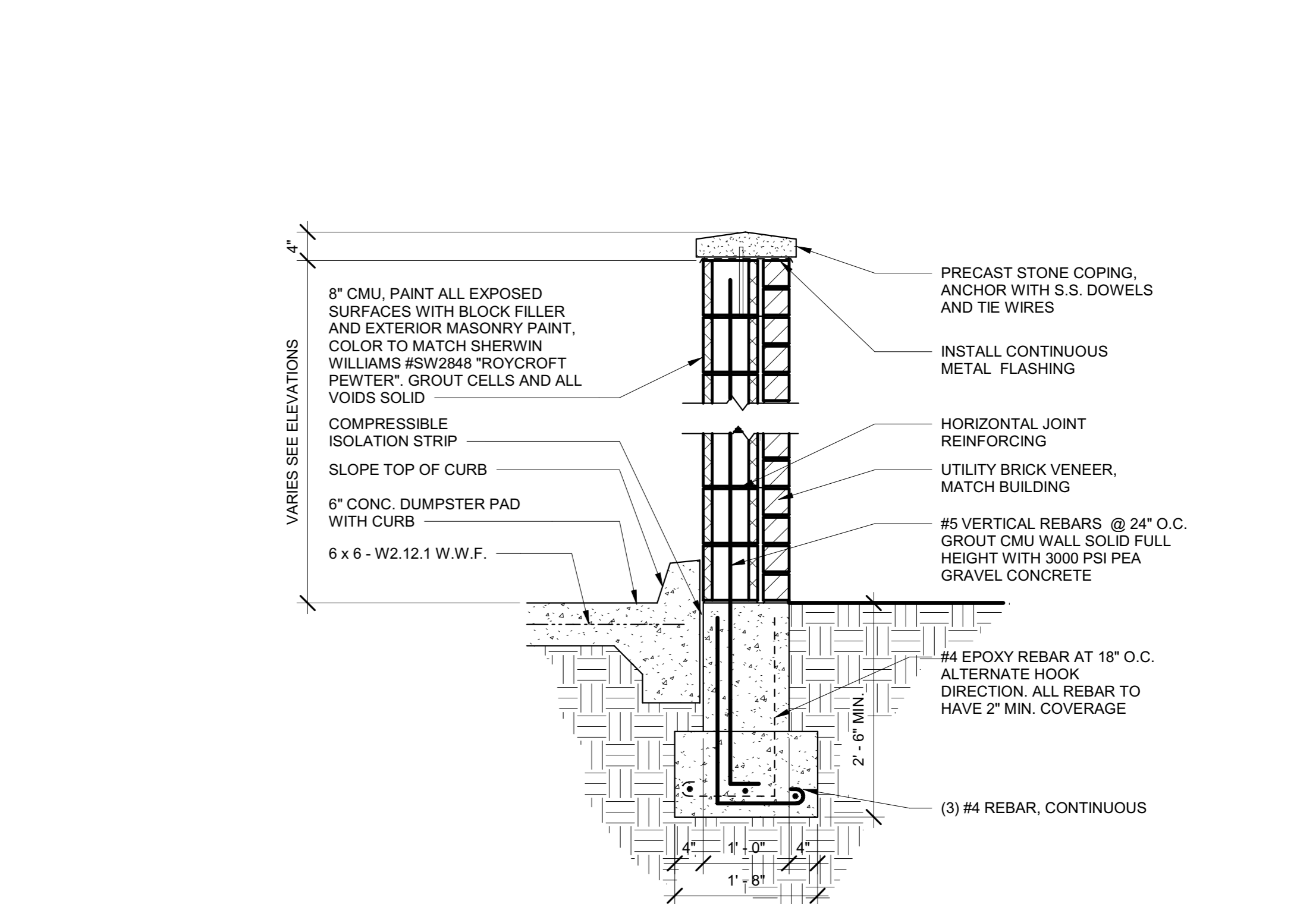
5 GENERATOR ENCLOSURE
1/4" = 1'-0"



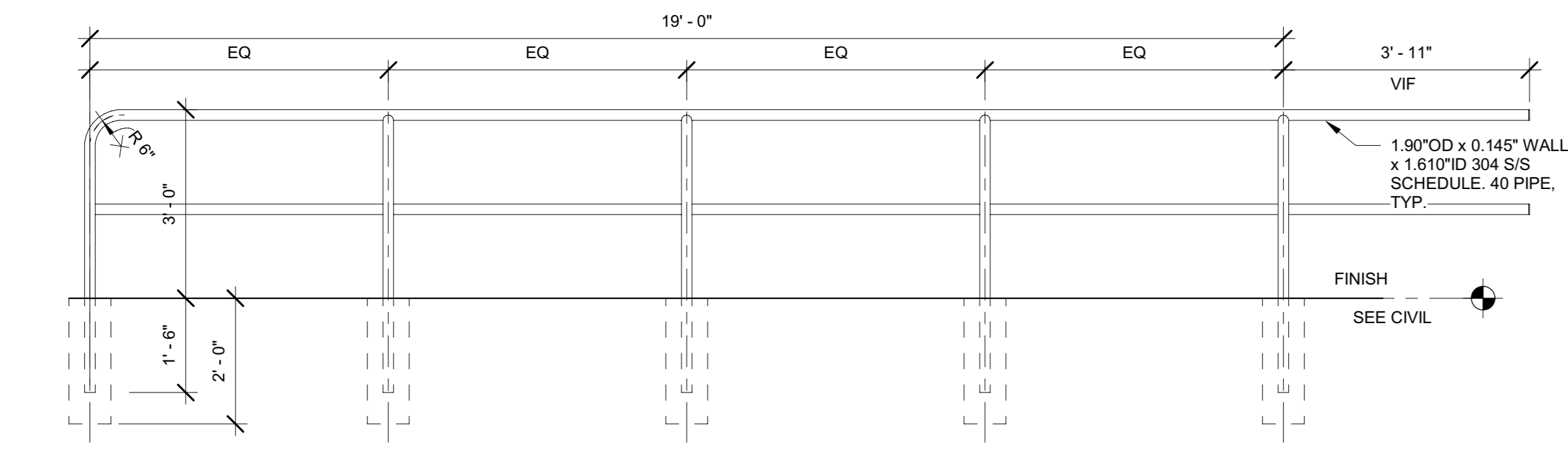
6 GENERATOR ENCLOSURE GATE ELEVATION
1/4" = 1'-0"



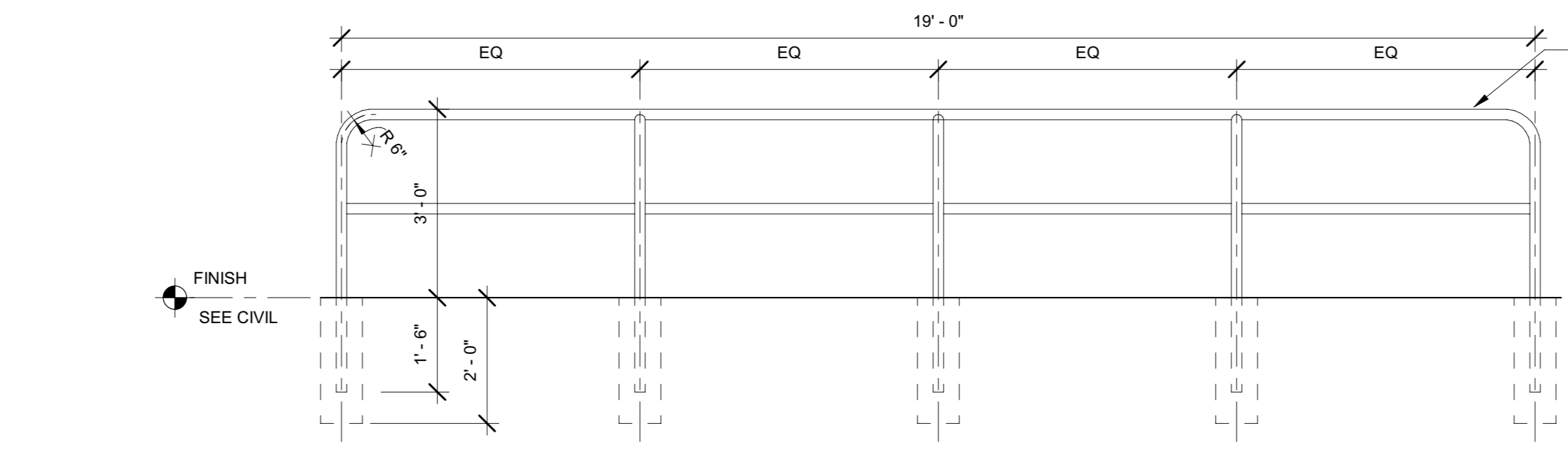
7 GENERATOR CONC. PAD DETAIL
3/4" = 1'-0"



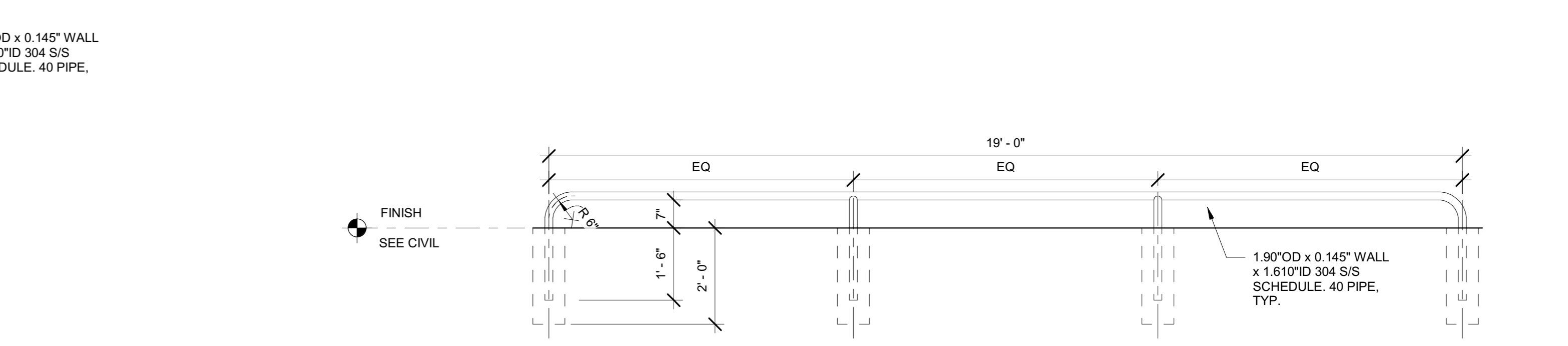
8 MASONRY ENCLOSURE - WALL SECTION
3/4" = 1'-0"



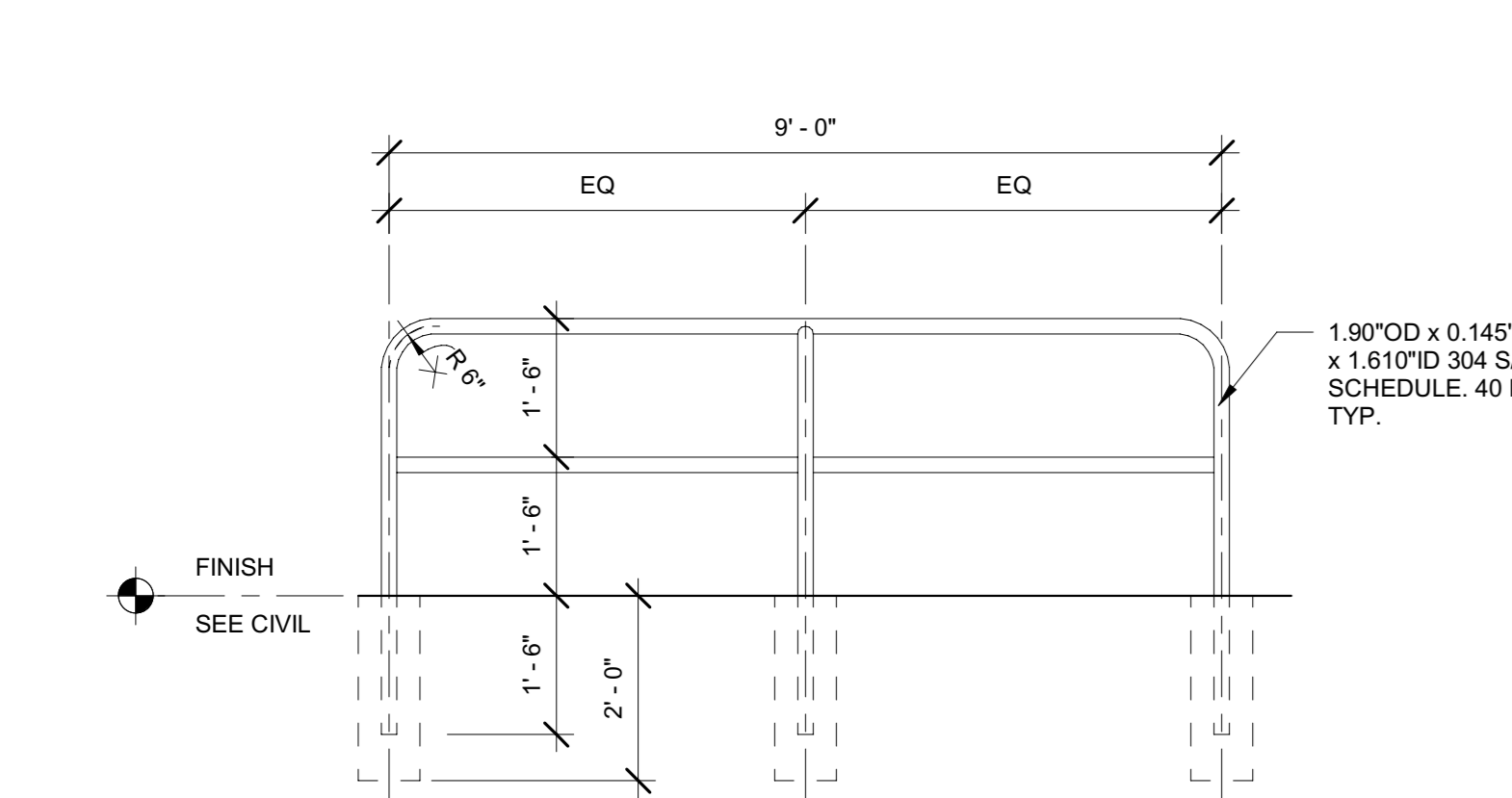
9 CART CORRAL RAILING LONGEST
1/2" = 1'-0"



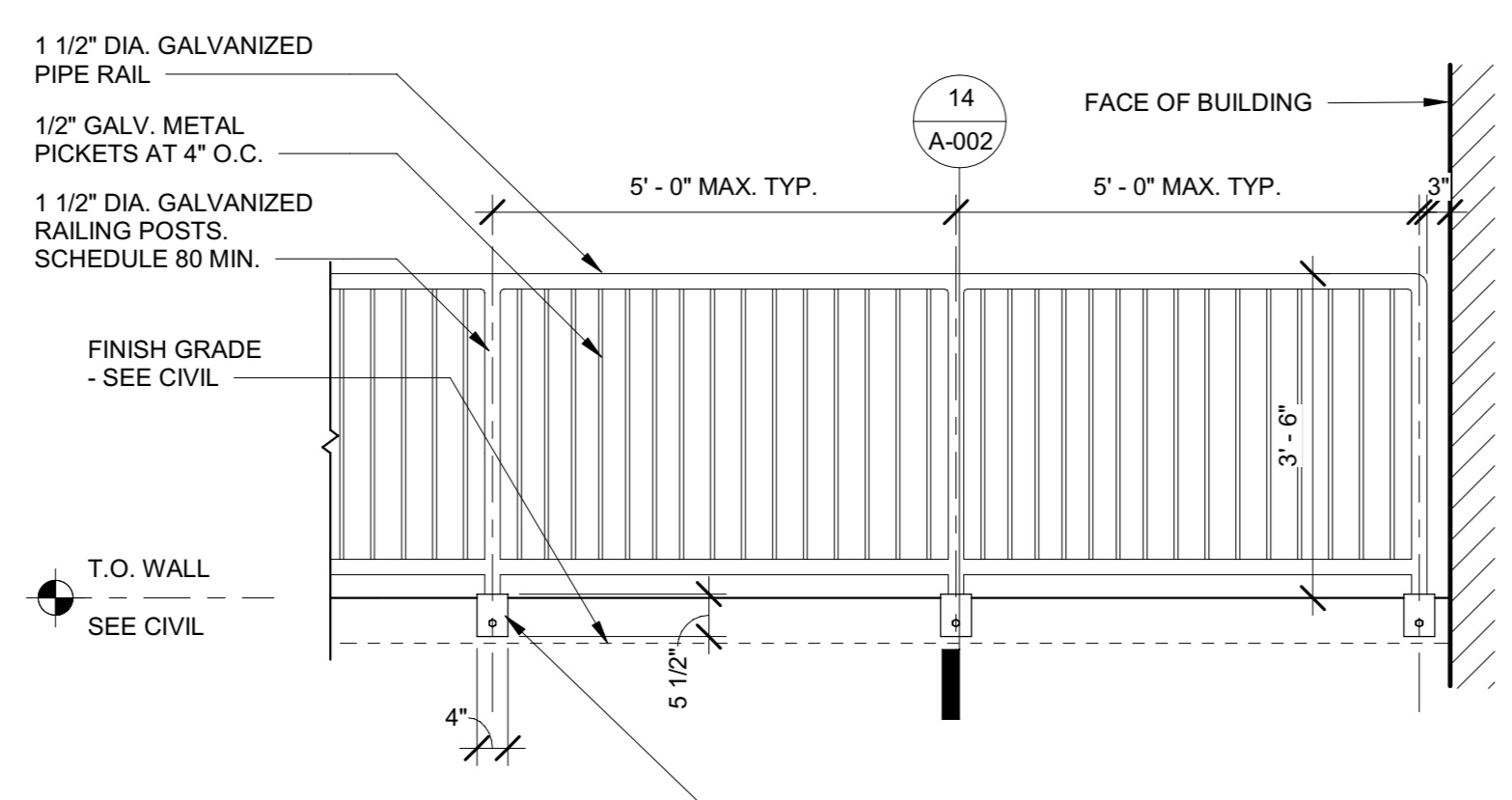
10 CART CORRAL RAILING TYP. LONG
1/2" = 1'-0"



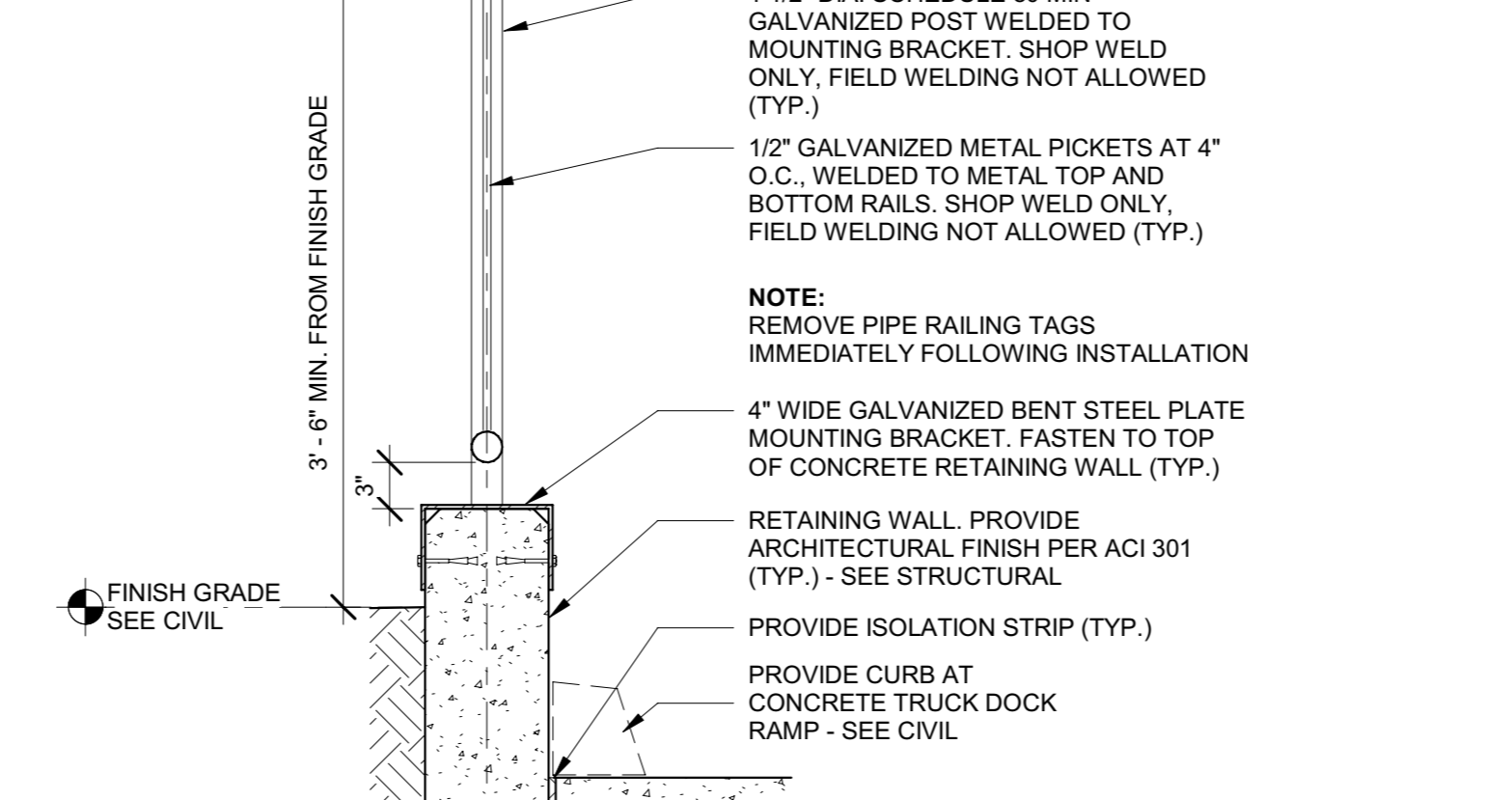
11 CART CORRAL LOW RAILING TYP. LONG
1/2" = 1'-0"



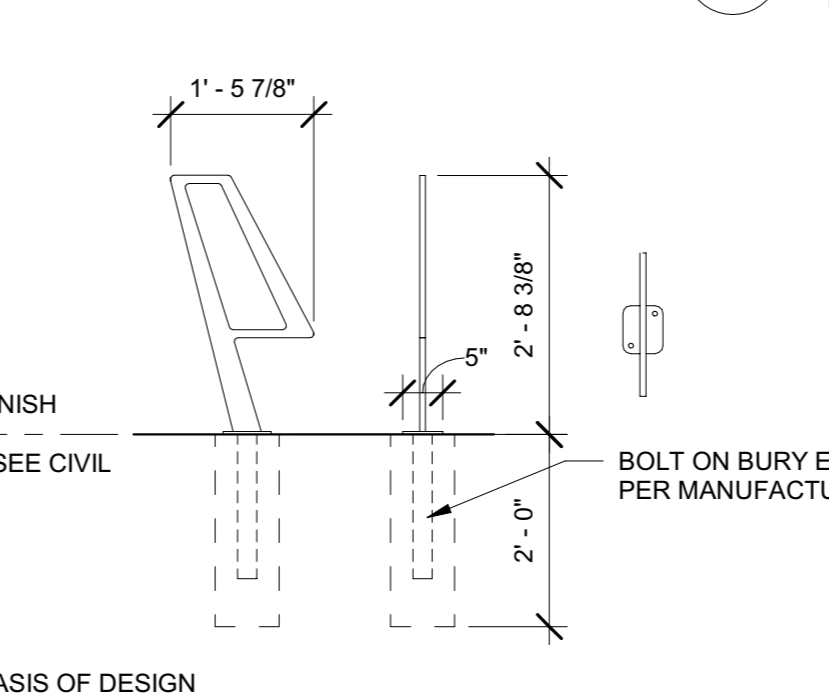
12 CART CORRAL RAILING TYP. SHORT
1/2" = 1'-0"



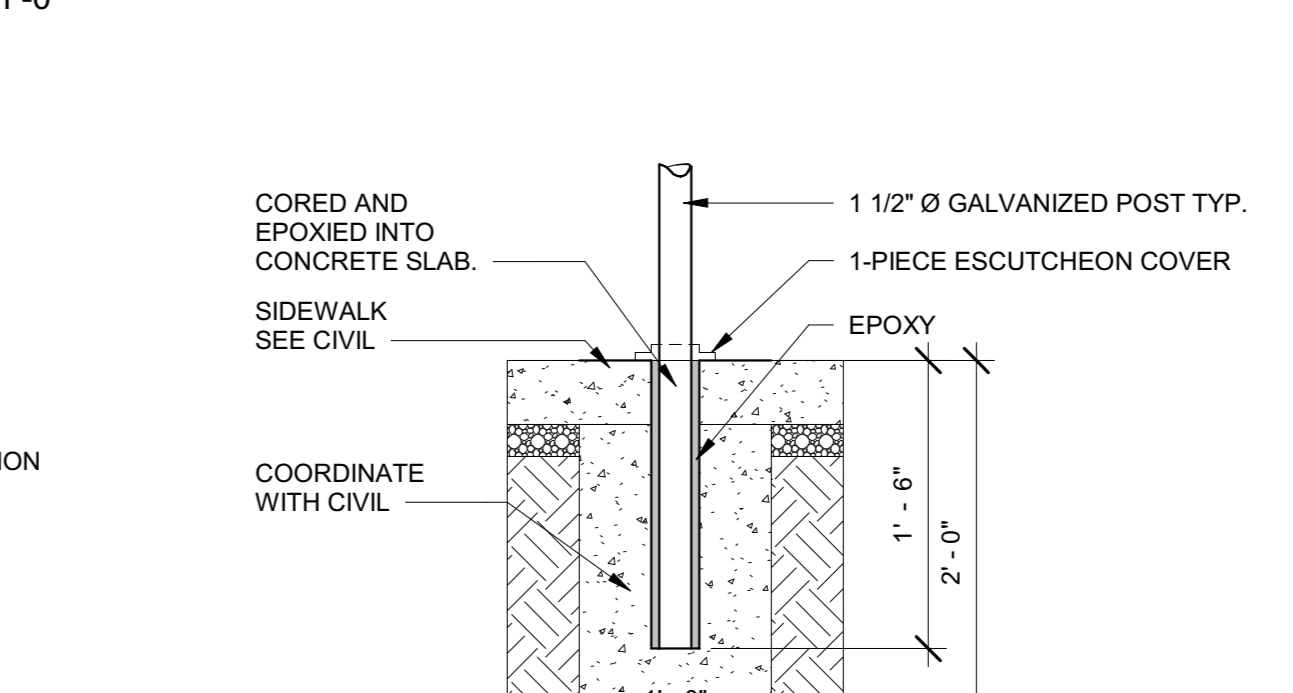
13 PIPE GUARDRAIL @ RETAINING WALL
1/2" = 1'-0"



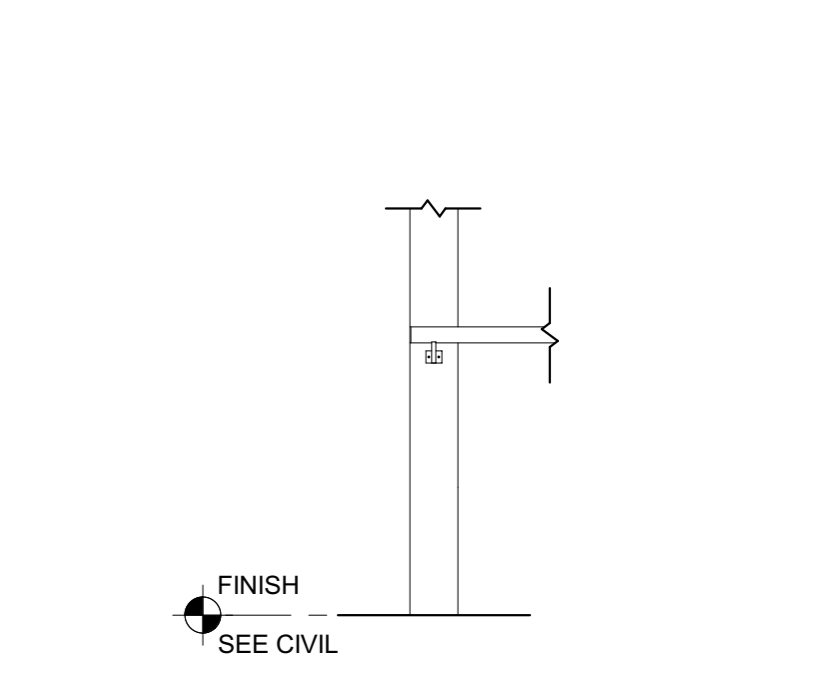
14 PIPE GUARDRAIL ANCHORAGE TYP.
1" = 1'-0"



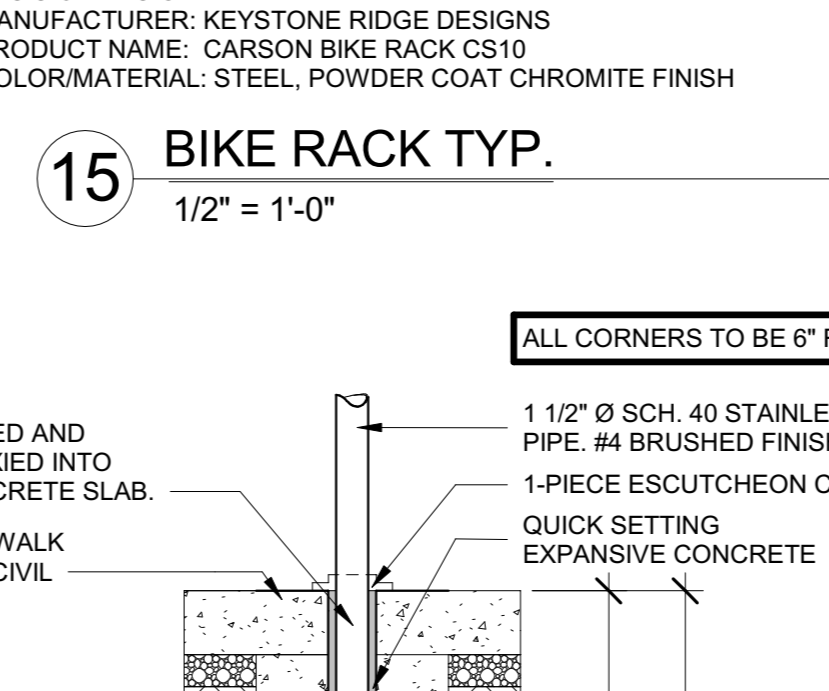
15 BIKE RACK TYP.
1/2" = 1'-0"



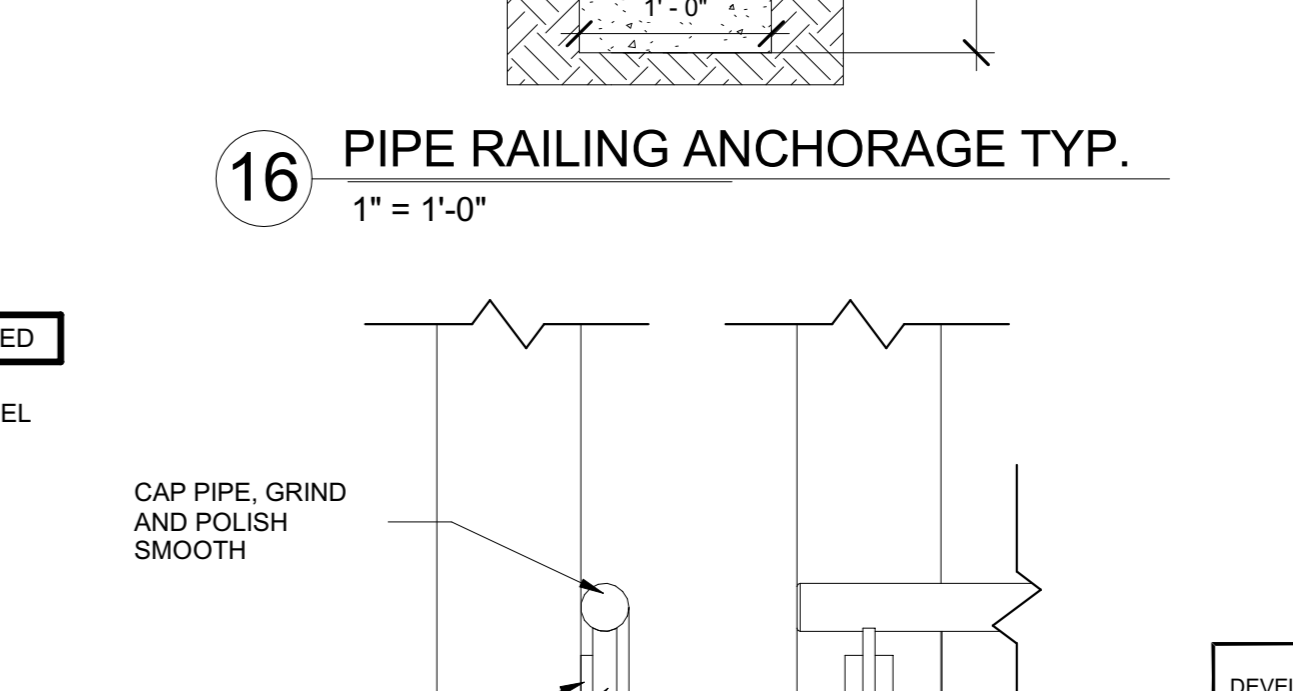
16 PIPE RAILING ANCHORAGE TYP.
1" = 1'-0"



18 CART CORRAL RAIL @ COLUMN
1/2" = 1'-0"



17 CART CORRAL RAIL ANCHORAGE TYP.
1" = 1'-0"



19 RAIL @ COLUMN DETAIL
1 1/2" = 1'-0"

DEVELOPER'S CERTIFICATE
 THE UNDERSIGNED AGREES TO EXECUTE ALL THE FEATURES OF SITE PLAN APPROVAL NO. 82020030 INCLUDING APPROVAL CONDITIONS, DEVELOPMENT PROGRAM, AND CERTIFIED SITE PLAN.
 DEVELOPER: LIDL USA, LLC COMPANY: CONNOR BEVANS
 ADDRESS: 3500 S. CLARK STREET, ARLINGTON, VA 22202 CONTACT PERSON:
 PHONE: (703) 424-8741
 EMAIL: CONNOR.BEVANS@LIDL.US
 SIGNATURE: *[Signature]*

LIDL
 architecture
 incorporated
 1902 campus commons drive suite 101
 reston, virginia 19191
 Tel: 703.476.3300
 Fax: 703.264.0733
 www.archinc.com

CONSTRUCTION DOCUMENTS FOR:
LIDL USA, LLC
LIDL MONTGOMERY VILLAGE
 19251 Centerway Road,
 Montgomery Village, MD 20879

Revision Schedule		
#	Description	Date

GENERAL NOTES:
 1. CONTRACTORS AND SUBCONTRACTORS SHALL VERIFY ALL EXISTING CONDITIONS AND CONDITIONS AT THE JOB SITE AND NOTIFY THE ARCHITECT OF ANY DISCREPANCIES BEFORE BEGINNING OR FABRICATION OF ANY WORK.
 2. DO NOT SCALE THESE DRAWINGS.
 SEAL:

 PROFESSIONAL CERTIFICATION
 I HEREBY CERTIFY THAT THESE DOCUMENTS WERE PREPARED OR APPROVED BY ME, AND THAT I AM A DULY LICENSED PROFESSIONAL ARCHITECT UNDER THE LAWS OF THE STATE OF MARYLAND, LICENSE NO. 7800-R, EXPIRATION DATE: 04/23/2021.
 90% CHECK SET
 DATE: 03.05.2020
 SCALE:
 As indicated
 SHEET NAME:
SITE PLAN DETAILS
 SHEET NUMBER:
A-002