



architecture
incorporated

1902 campus commons drive
suite 101
reston, virginia 20191
tel: 703.476.3900
fax: 703.264.0733
www.archinc.com

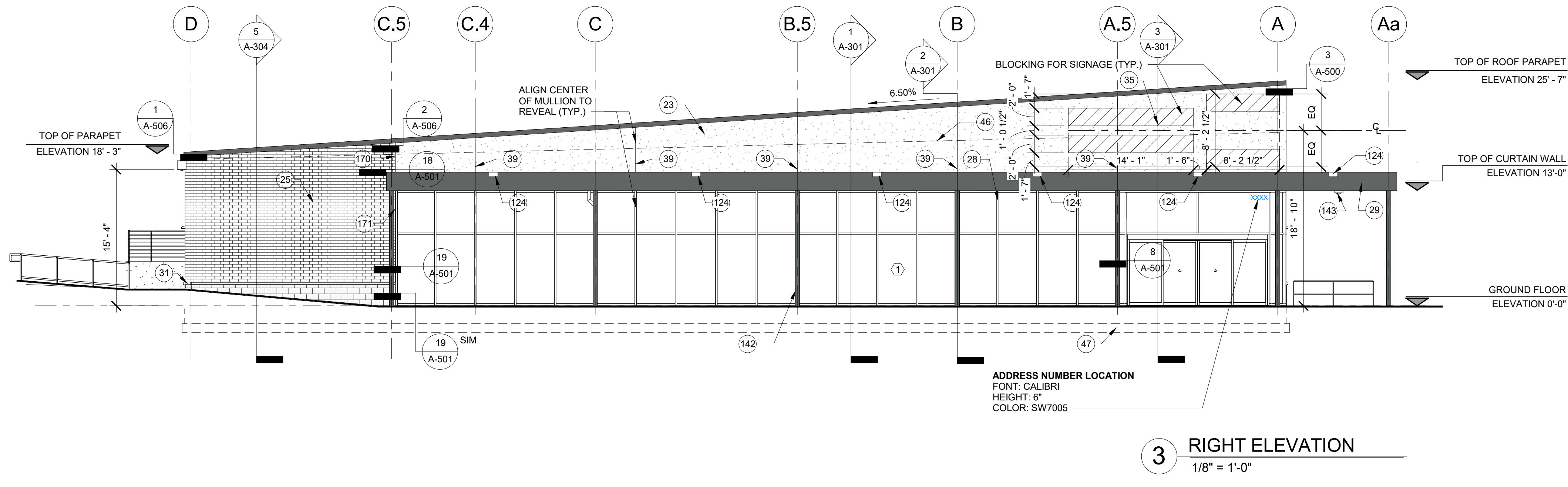
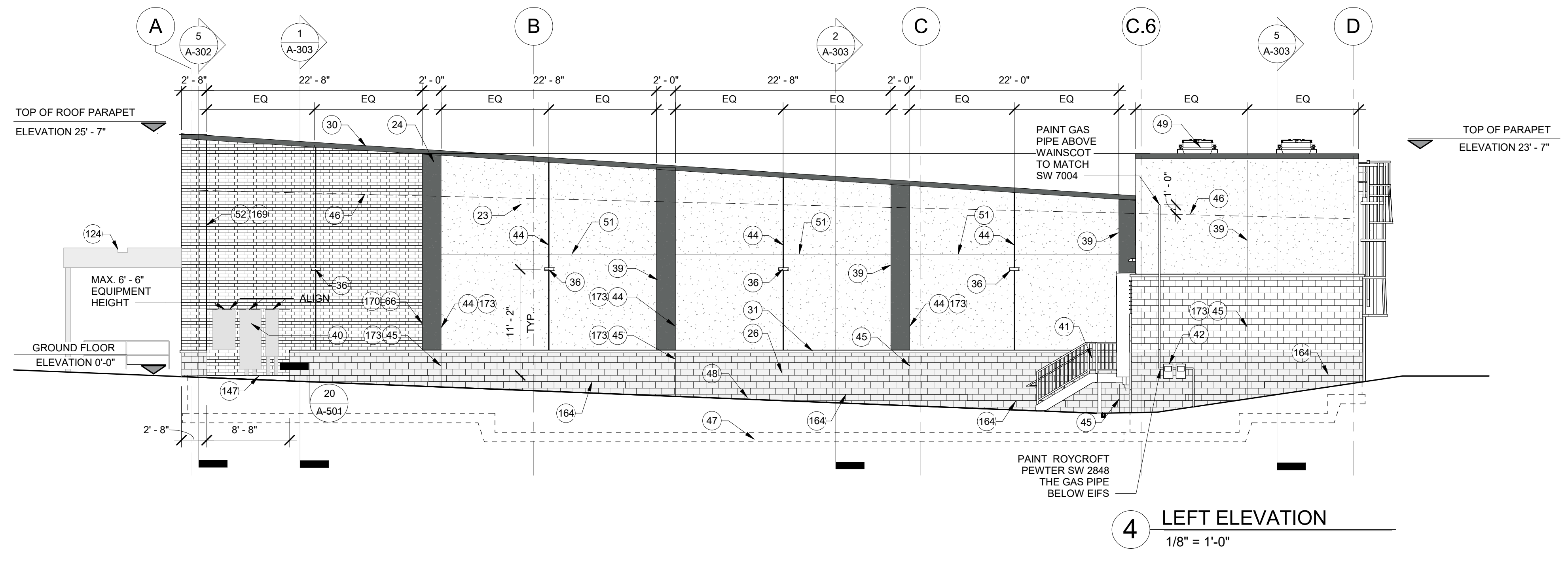
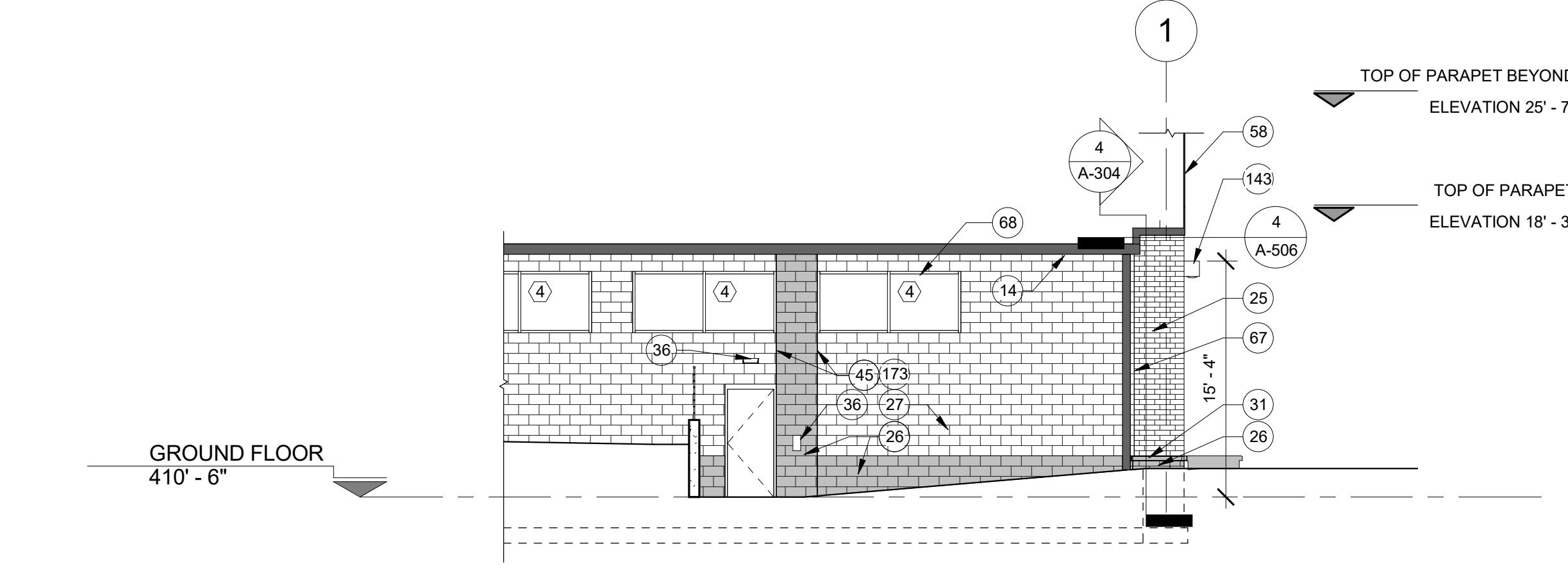
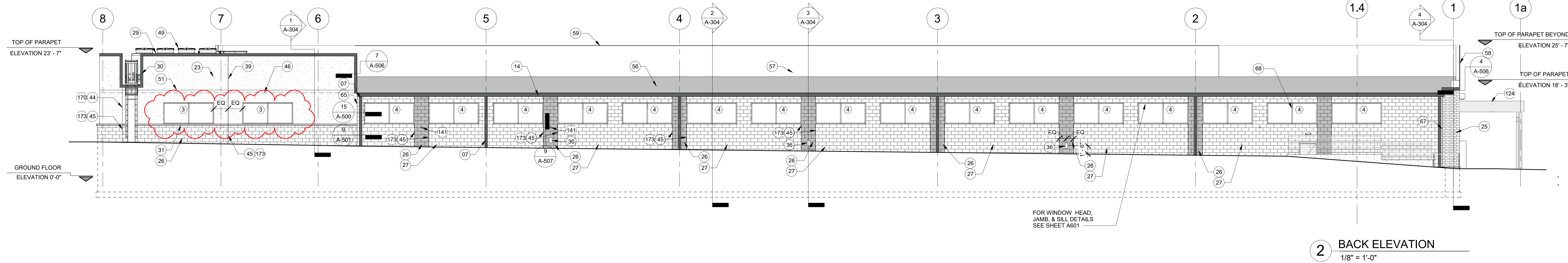
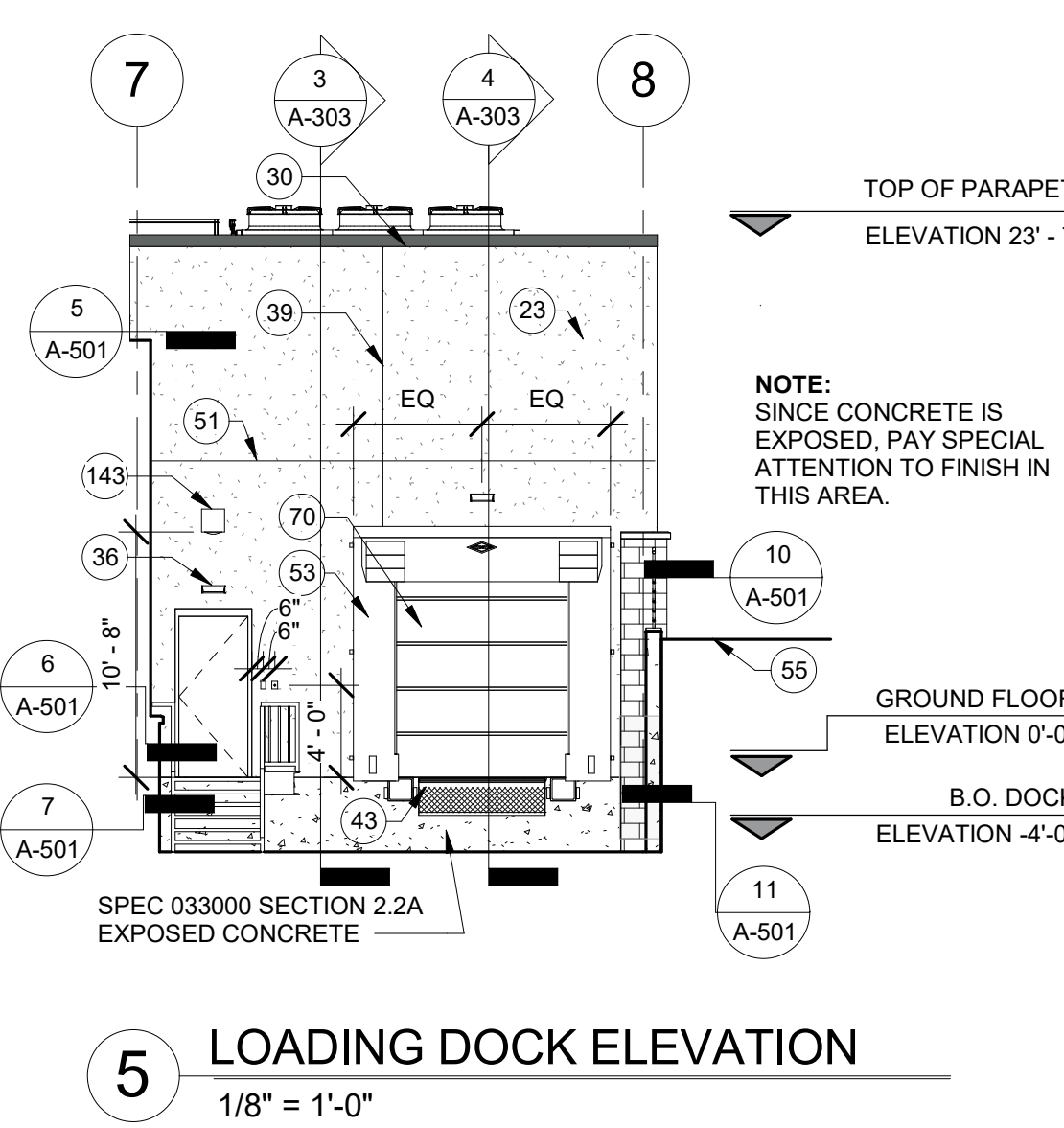
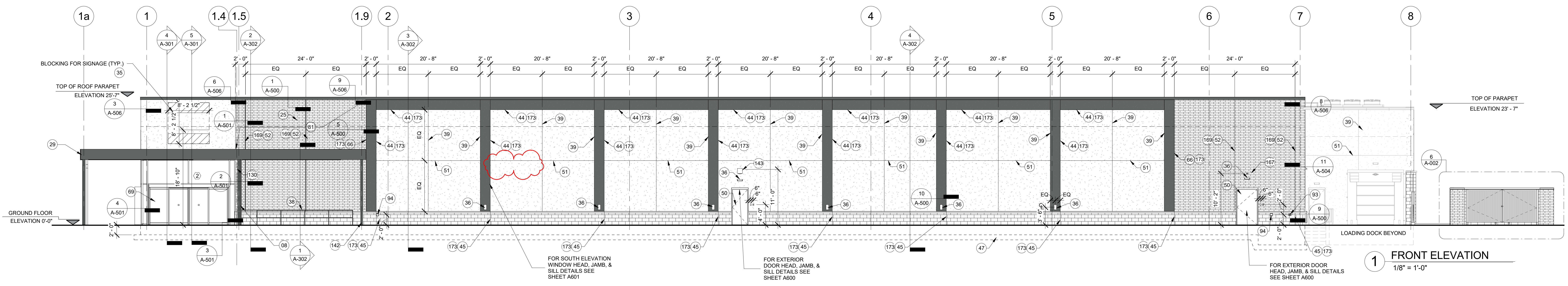
CONSTRUCTION DOCUMENTS FOR:
LIDL USA, LLC
LIDL MONTGOMERY VILLAGE
19225 Montgomery Village Ave,
Montgomery Village, MD 20879

Revision Schedule		
#	Description	Date
1	PERMIT COMMENTS	07.11.2020
2	PM 1	12.11.2020
3	PM 2	03.31.2021
4	PM 3	06.07.2021

GENERAL NOTES:
1. CONTRACTORS AND SUBCONTRACTORS SHALL VERIFY ALL DIMENSIONS, TOLERANCES AND CONDITIONS AT THE JOB SITE AND NOTIFY THE ARCHITECT OF ANY DISCREPANCIES BEFORE BEGINNING OR FABRICATION OF ANY WORK.
2. DO NOT SCALE THESE DRAWINGS.
SCALE:

PROFESSIONAL CERTIFICATION I HEREBY CERTIFY THAT THESE DOCUMENTS WERE PREPARED OR APPROVED BY ME, AND THAT I AM A DULY LICENSED PROFESSIONAL ARCHITECT UNDER THE LAWS OF THE STATE OF MARYLAND, LICENSE NO. 78004, EXPIRATION DATE: 06/30/2021.
PERMIT DOCUMENTS
DATE: 06.19.2020
SCALE: 1/8" = 1'-0"
SHEET NAME: ELEVATIONS

SHEET NUMBER:	
A-200	



NUMBER	NOTE	PLAN NOTES
07	GUTTER, SEE PLUMBING	
08	DOWNSPOUT, SEE PLUMBING	
14	1" x 1" W GUTTER WITH 4" x 4" DOWNSPOUT PROVIDE LEAF/DEBRIS GUARDS	
23	EIFS-COLOR 'A', SEE SPEC 072419	
24	EIFS-COLOR 'B', SEE SPEC 072419	
25	BRICK VENEER COLOR FLASHED CAMELOT IRONSPOT CLASSIC UTILITY, SEE SPEC 042000	
26	SPLIT FACE CMU, SEE SPEC 042000	
27	SPLIT FACE CMU, SEE SPEC 042000	
28	ALUMINUM STOREFRONT, SEE SPEC 084113	
29	METAL COMPOSITE FASCIA, SEE SPEC 077119	
30	CUSTOM COPING CAP 1" WATER, SEE SPEC 077119	
31	GEMSTONE CAP, SEE SPEC 047200	
35	BUILDING SIGNAGE, SEE DETAIL BA-500	
36	EXTERIOR WALL MOUNTED LIGHT, SEE ELECTRICAL	
38	SHOPPING CART GUIDES	
39	EIFS REVEAL (TYP.), SEE DETAILS ON A-500	
40	ELECTRICAL SERVICE EQUIPMENT - SEE ELECTRICAL	
41	GALVANIZED STEEL STAIR - SEE DETAILS ON A-401	
42	GAS METER - SEE MEP	
43	SURFACE MOUNTED DOCK LEVELER AND BUMPERS - SEE SPEC 111319	
44	EIFS EXPANSION JOINT - SEE TYPICAL DETAILS ON A-500	
45	CMU CONTROL JOINT	
46	LINE OF ROOF BEHIND PARAPET	
47	LINE OF FOUNDATION	
48	CONCRETE LOADING DOCK RAMP, SEE CIVIL	
49	ROOF TOP EQUIPMENT BEYOND PARAPET	
50	HOLLOW METAL DOOR AND FRAME - PAINT P3	
51	HORIZONTAL EIFS REVEAL - SEE DETAIL 7A-500	
52	BRICK EXPANSION JOINT - SEE DETAIL 1A-500	
53	LOADING DOCK SHELTER - SEE SPEC 111316	
55	FINISH GRADE - SEE CIVIL	
56	ROOFING MEMBRANE	
57	EXTEND ROOFING MEMBRANE UP PARAPET WALL BEYOND	
58	PARAPET FASCIA BEYOND	
59	TOP OF PARAPET BEYOND	
65	EIFS / CMU CONTROL JOINT - SEE DETAILS ON 15A-500	
66	EIFS / BRICK CONTROL JOINT - SEE DETAIL 6A-500	
67	BRICK / CMU CONTROL JOINT - SEE DETAIL 13A-500	
68	ALUMINUM STOREFRONT WINDOWS - SEE SPEC 085113	
69	SLIDING ALUMINUM-FRAMED GLASS DOORS - SEE SPEC 083213	
70	INSULATED OVERHEAD ROLLING DOOR - SEE SPEC 083213	
81	PAINTED BRICK, PRIMER TO BE LOXON CONCRETE AND MASONRY PRIMER/SEALER BY SHERWIN WILLIAMS, PAINT TO BE A-100 EXTERIOR LATEX FLAT PAINT SHERWIN WILLIAMS SW 7004 SNOWBOUND.	
93	FIRE DEPARTMENT CONNECTION - CONFIRM HEIGHT WITH LOCAL AHJ - SEE FIRE PROTECTION DRAWINGS	
94	RECESSED WALL MOUNTED HOSE BIB - SEE PLUMBING	
124	CANOPY OVERFLOW	
130	RECESSED DUPLEX RECEPTACLE - LOCATED ON BRICK WALL, BEHIND COLUMN - SEE ELECTRICAL	
141	SANITARY VENT, SEE PLUMBING	
142	EXTERIOR COLUMN, PROVIDE EXTERIOR PAINT P3	
143	EXTERIOR CAMERA - SEE TECH.	
147	CONCRETE CURB	
164	ADJUST FLASHING HEIGHT WITH LOADING DOCK SLOPE	
167	EXTERIOR ALARM BELL AND STROBE	
169	SEALANT COLOR CF37 RIVER ROUGE	
170	SEALANT COLOR CF14 DOVER SKY	
171	SEALANT COLOR 804 ANODIZED ALUMINUM	
173	SEALANT COLOR 950 CHARCOAL GRAY	