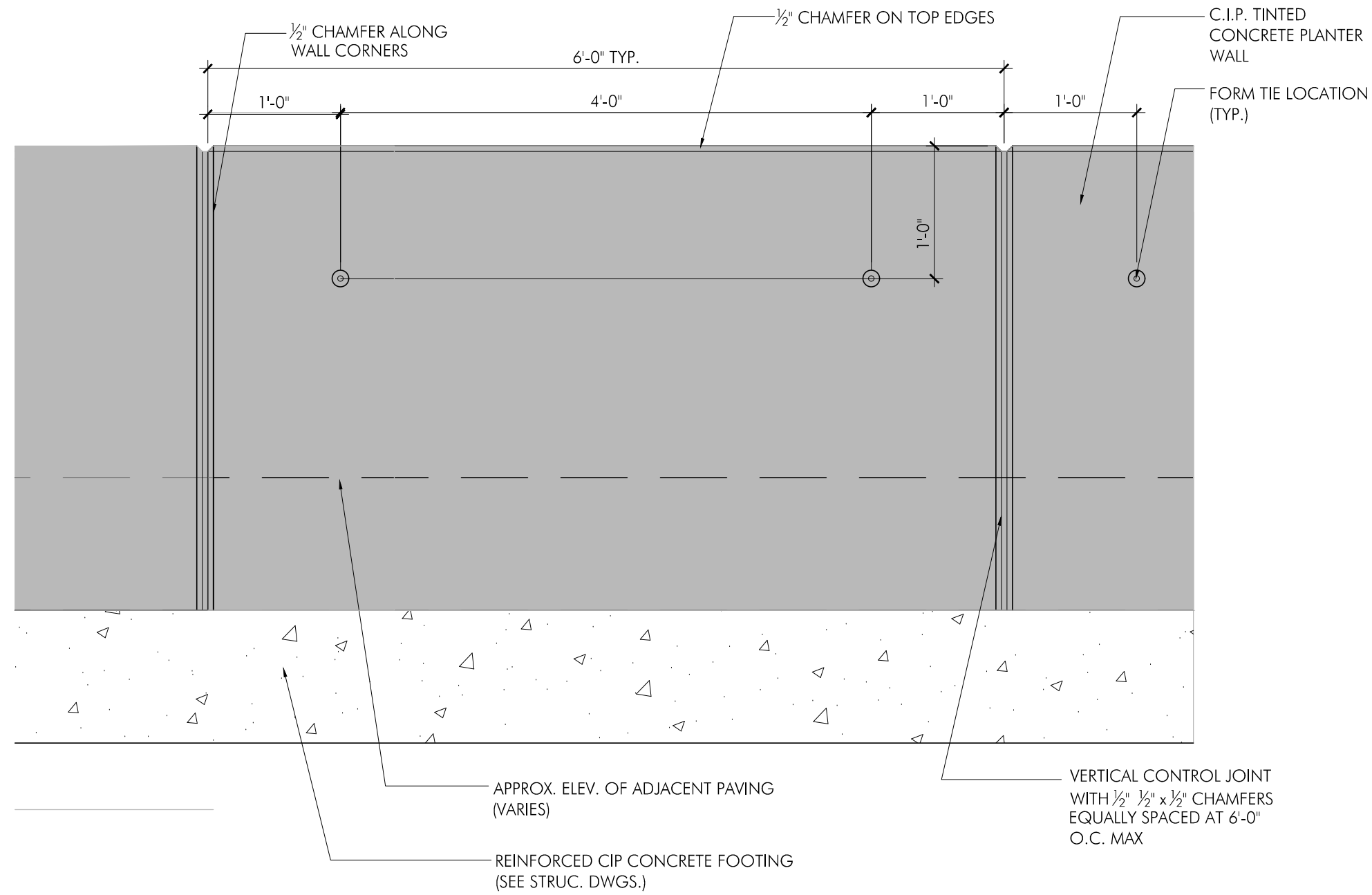
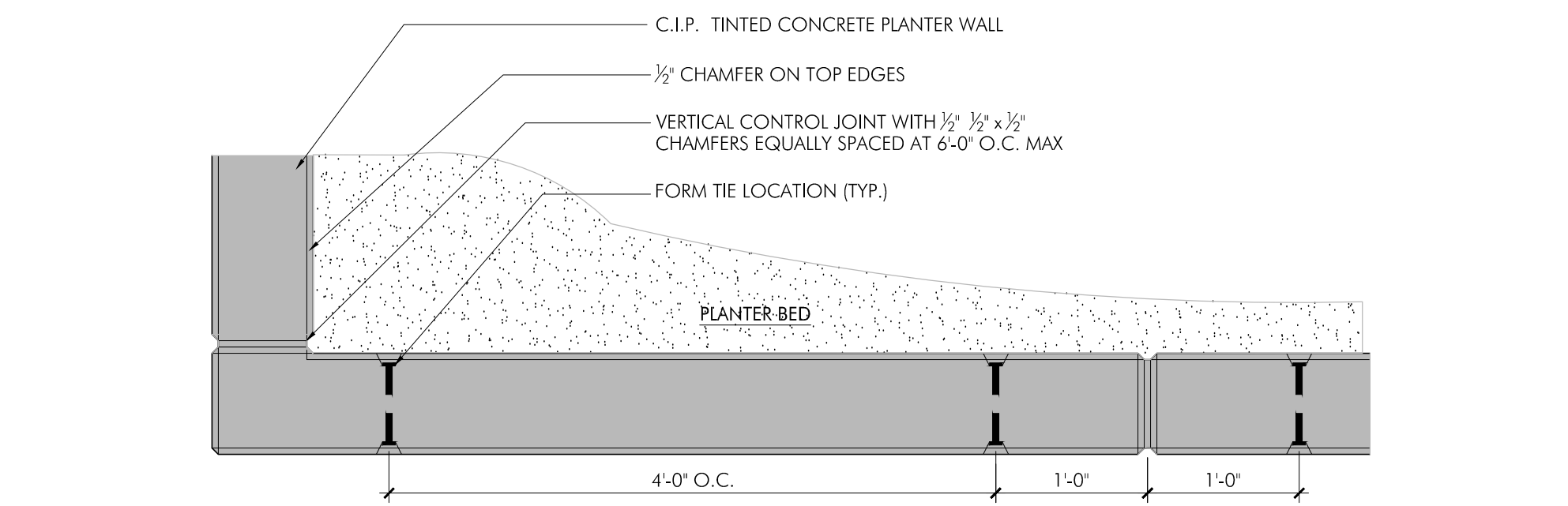


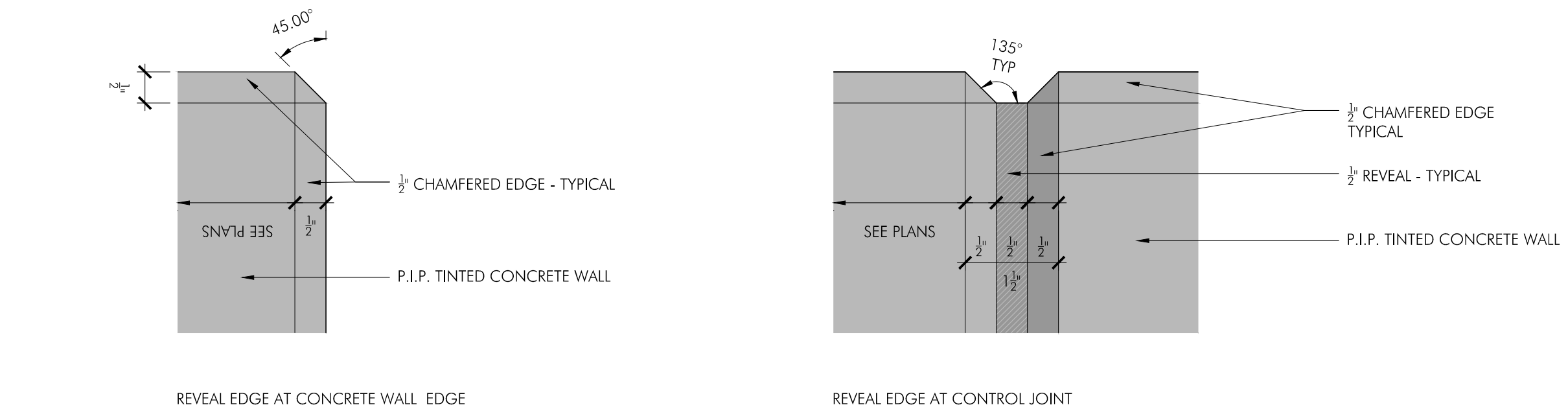
Montgomery County Planning Department



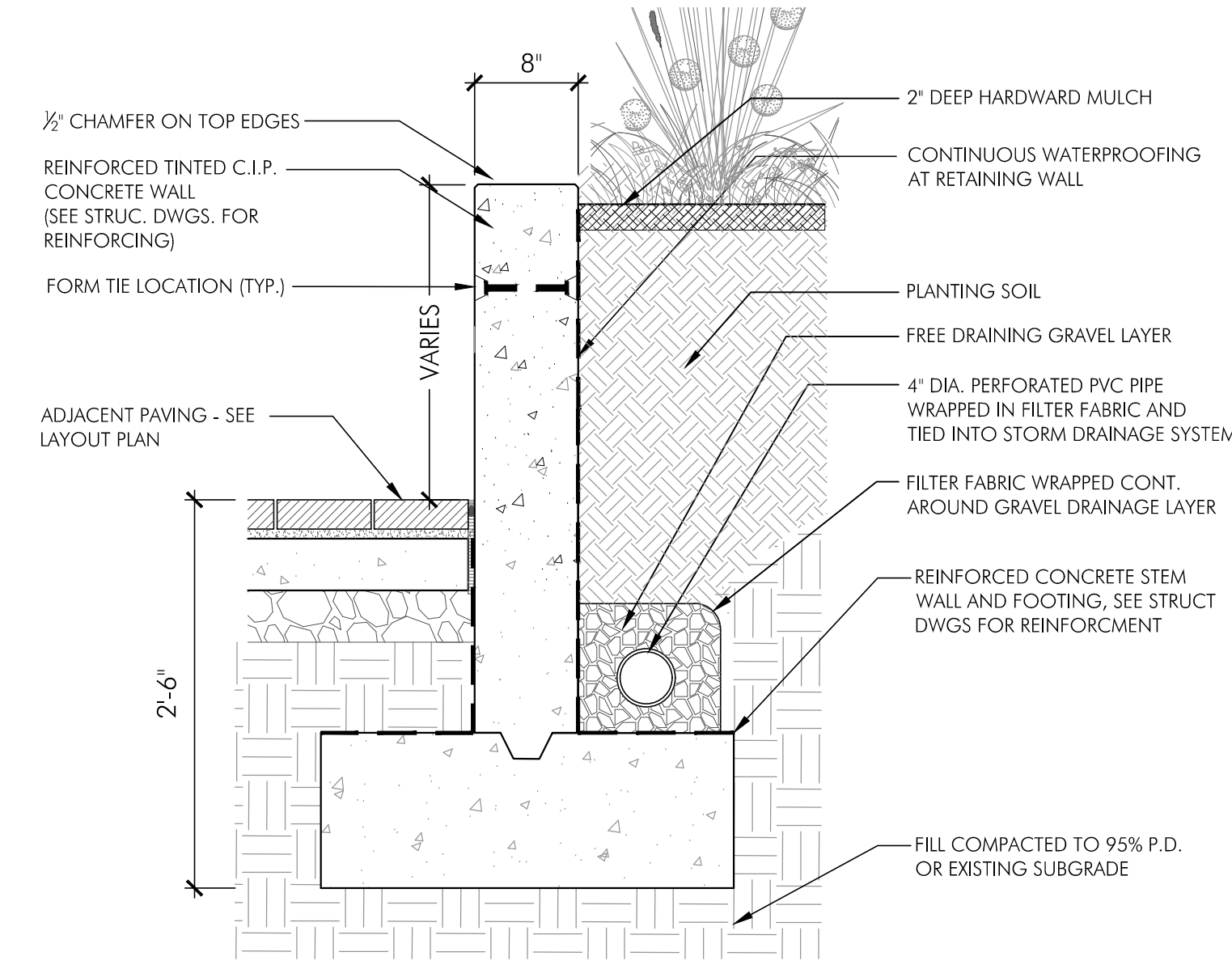
- TINTED CIP CONCRETE WALL - CHAMFER, REVEAL AND WEEP GENERAL NOTES:**
- (\*) ALL INFORMATION REGARDING CIP CONCRETE STRUCTURAL MEMBER SIZE, FOOTINGS, CONNECTIONS TO STRUCT. SLAB AND CIP CONCRETE REINFORCEMENT DESIGN ARE TO BE REVIEWED AND PROVIDED BY PROJECT STRUCTURAL ENGINEER - STRUCT DWGS MAY BE PROVIDED FOR ADDITIONAL DETAILS - CONTRACTOR TO NOTIFY LANDSCAPE ARCHITECT OF ANY DISCREPANCIES UPON DISCOVERY PRIOR TO BEING BUILT.
- GC TO SUBMIT CIP CONCRETE WALL DIMENSIONAL LAYOUT, REINFORCEMENT DESIGN AND FOOTING DESIGN SHOP DWGS FOR FINAL REVIEW AND APPROVAL BY PROJ. LA AND PROJ. STRUCT. ENGINEER PRIOR TO THE START OF CONSTRUCTION.
  - ALL CIP CONCRETE PLANTER WALLS ARE TO BE TINTED WITH AN INTEGRAL COLOR.
  - CONTRACTOR TO SUBMIT A PHYSICAL TINTED CONCRETE MATERIAL/COLOR SAMPLE FOR FINAL REVIEW AND APPROVAL BY PROJ. LA PRIOR TO MOCK-UP INSTALLATION.
  - CONTRACTOR TO SUBMIT TINTED CONCRETE COLOR CUT SHEETS AND PRODUCT DATA FOR REVIEW AND APPROVAL BY PROJ. LA PRIOR TO MOCK-UP INSTALLATION.
  - CONTRACTOR TO PROVIDE A 4'-0" WIDE BY FULL HEIGHT MOCK-UP OF A TYP. CIP CONCRETE WALL SEGMENT WITH CHAMFERED EDGES AND VERTICAL REVEALS.
  - MOCK-UP TO INCLUDED A CORNER CONDITION, CHAMFERED EDGES, VERTICAL REVEALS, & SACK AND RUB FINISH ILLUSTRATING FINAL QUALITY OF WORK.
  - MOCK-UP TO BE REVIEWED ON SITE. MOCK-UP TO BE APPROVED BY PROJECT LANDSCAPE ARCHITECT PRIOR TO THE START OF ANY FINAL TINTED CIP CONCRETE INSTALLATION WORK.
  - MOCK-UP CAN BECOME PART OF FINAL WORK IF APPROVED AND PROTECTED IN PLACE TO PROJECT POINT OF SUBSTANTIAL COMPLETION. SEGMENTS DAMAGED DURING CONSTRUCTION WILL BE REJECTED AT FINAL PUNCH AND REQUIRE REPLACEMENT.
  - TINTED CIP CONCRETE WALLS WITH REVEALS ARE FINISHED ELEMENT/SURFACE AND SHOULD BE PROTECTED IN PLACE DURING CONSTRUCTION. TINTED WALLS DAMAGED OR STAINED WITH MORTAR/WATERPROOFING/PAINT, ETC DURING CONSTRUCTION WILL BE REJECTED AND WILL NEED TO BE REPLACED.

**01** TYPICAL CONCRETE PLANTER WALL MODULE  
SCALE : 1"=1'-0"

**02** CONCRETE PLANTER WALL CONTROL JOINT  
SCALE : 2"=1'-0"



**03** CONCRETE PLANTER WALL CHAMFER AND REVEAL  
SCALE : HALF SCALE



**04** REINFORCED CIP CONCRETE PLANTER WALL -SECTION  
SCALE : 1"=1'-0"

**Developer's Certificate**  
THE UNDERSIGNED AGREES TO EXECUTE ALL THE FEATURES OF THE SITE PLAN APPROVAL NO. 8201 \_\_\_\_\_ INCLUDING APPROVAL CONDITIONS, DEVELOPMENT PROGRAM, AND CERTIFIED SITE PLAN.

Developer: **Ardennes Partners, LLC.** **John Davis**  
Company Contact Person

Address: **7113 Warbler Lane**  
**McLean, Virginia 22101**

Phone: **703 - 932 - 6666**

Signature: \_\_\_\_\_

**PARKERRODRIGUEZ, INC.**  
Planning | Urban Design | Landscape Architecture

PARKER RODRIGUEZ INC.  
101 NORTH UNION STREET  
SUITE 340  
ALEXANDRIA, VA 22314  
PH:703.548.5010  
www.parkerrodriguez.com

CONTACT  
TRINI RODRIGUEZ  
101 NORTH UNION STREET  
SUITE 340  
ALEXANDRIA, VA 22314  
PH:703.548.5010  
www.parkerrodriguez.com

APPLICANT  
ARDENNES PARTNERS, LLC.  
7113 WARBLER LANE  
MCLEAN, VA 22101  
PH: 703 - 932 - 6666  
CONTACT: JOHN DAVIS

**12500 ARDENNES**  
12500 Ardenne Ave. Rockville, MD 20852  
LOT P3 / BLOCK A / PARCEL N184  
**MONTGOMERY COUNTY, MARYLAND**  
4<sup>TH</sup> ELECTION DISTRICT  
PLAT 10000 LIBER 24446 - FOLIO 157  
WSSC SHEET MAP 216N006, TAX MAP GRID GQ63

REVISIONS	
DATE	DESCRIPTION
04/01/2020	SITE PLAN RESUBMISSION

**SITE PLAN**  
Hardscape Details - Streetscape

SHEET NUMBER:  
08-LL-820200080-402