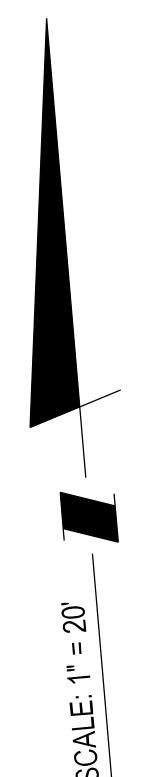
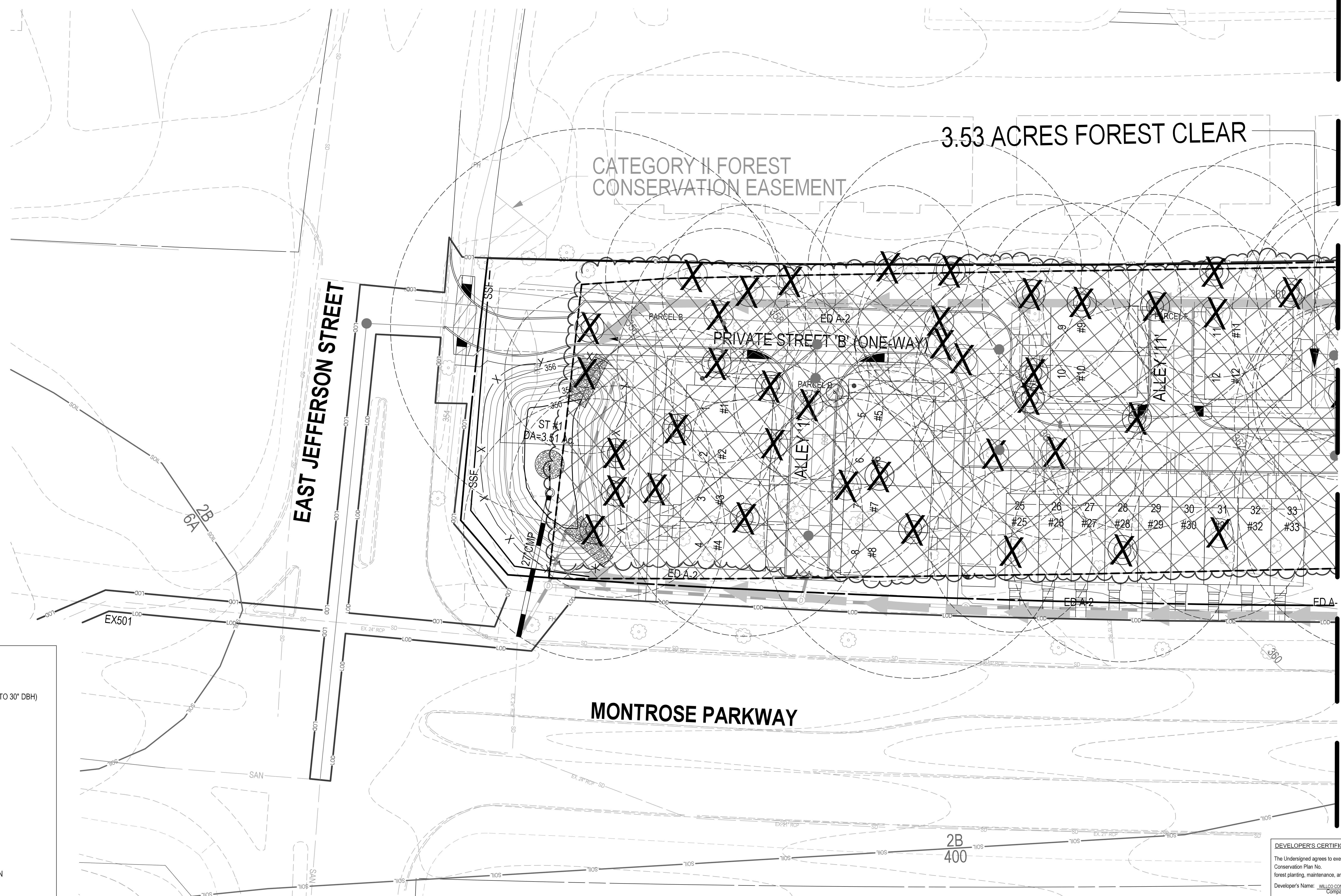


PLANNING DEPARTMENT USE ONLY (E-PLANS)



MATCHLINE SHEET 3

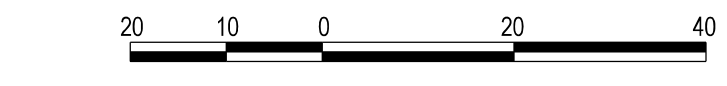


3.53 ACRES FOREST CLEAR

CATEGORY II FOREST CONSERVATION EASEMENT

EAST JEFFERSON STREET

MONTROSE PARKWAY



LEGEND:

- SPECIMEN TREE (GREATER THAN OR EQUAL TO 30" DBH)
- SIGNIFICANT TREE (BETWEEN 24-29.9" DBH)
- TREE TO BE REMOVED
- LIMITS OF DISTURBANCE
- PROPOSED CONTOUR
- EXISTING SOIL LINE
- EXISTING FOREST LINE
- FOREST STAND DELINEATION
- FOREST TO BE REMOVED
- WETLAND
- WETLAND BUFFER

DEVELOPER'S CERTIFICATE

The Undersigned agrees to execute all the features of the Approved Final Forest Conservation Plan No. _____, including financial bonding, forest planting, maintenance, and all other applicable agreements.

Developer's Name: WILCO CONSTRUCTION CO., INC. ROBERT A. MAZZUCA
CORPORATE PERSON

Address: 7811 MONTROSE ROAD, POTOMAC, MD 20854

Phone: 301-369-4421

Signature: _____

SOLTESZ, INC.

Rockville Office
2 Research Place, Suite 100
Rockville, MD 20850
P. 301.948.2750 F. 301.948.9067

Rockville
Lanham
Waldorf
Leonardtown
Frederick
Soltesz DC, LLC

www.soltesz.com

NO.	DATE	REVISIONS	BY	DATE

DATE: JANUARY 2020
DESIGNED: KDL
CAD STANDARDS VERSION: V8 - RCS
TECHNICIAN: JW
CHECKED: KDL

MISS UTILITY NOTE

INFORMATION CONCERNING EXISTING UNDERGROUND UTILITIES WAS OBTAINED FROM AVAILABLE RECORDS. THE CONTRACTOR MUST DETERMINE THE EXACT LOCATION AND ELEVATION OF ALL EXISTING UTILITIES AND UTILITY ORIGINATOR'S RECORDS BY HAND, WELL IN ADVANCE OF THE START OF EXCAVATION. CONTACT "MISS UTILITY" AT 1-800-261-7777 48 HOURS PRIOR TO THE START OF EXCAVATION. IF CLEARANCES ARE LESS THAN SHOWN ON THIS PLAN OR TWELVE (12) INCHES, WHICHEVER IS LESS, CONTACT THE ENGINEER AND THE UTILITY COMPANY BEFORE PROCEEDING WITH CONSTRUCTION. CLEARANCES LESS THAN NOTED MAY REQUIRE REVISIONS TO THIS PLAN.

OWNER/DEVELOPER/APPLICANT

WILGUS/MONTROSE ASSOCIATES, LLC
7811 MONTROSE ROAD
SUITE 200
POTOMAC, MD 20854
PHONE: (301) 369-1500
ROCKEN@WILCO.COM
RICHARD COHEN

MAP: ADC	GRID: 5285
TAX MAP: Q102	ZONING CATEGORY: CR-20 (C-10, R-10, R-20, CR-10, CR-20, R-10, R-20)
WISC 200 SHEET: 215 NW 06	SITE DATUM: HORIZONTAL: NAD83 VERTICAL: NAD83



PRELIMINARY FCP

PRELIMINARY FOREST CONSERVATION PLAN

WILGUS TRACT

120200140

POTOMAC (1ST) ELECTION DISTRICT, MONTGOMERY COUNTY, MARYLAND

SHEET **2**
OF **7**

PROJECT NO.
1205-02-01

The original of this drawing document was prepared by Soltesz, Inc. (SOLTESZ). This document was not obtained directly from SOLTESZ, Inc. SOLTESZ cannot guarantee that unauthorized changes and/or alterations were not made by others. If verification of the information contained herein is needed, contact should be made directly with SOLTESZ. SOLTESZ makes no warranties, express or implied, concerning the accuracy of any information that has been transmitted by electronic means.