

The original of this drawing document was prepared by Soltesz, Inc. (SOLTESZ). This document was not obtained directly from SOLTESZ, Inc. (SOLTESZ), and/or it was transmitted electronically. SOLTESZ cannot guarantee that unauthorized changes and/or alterations were not made by others. If verification of the information contained herein is needed, contact should be made directly with SOLTESZ. SOLTESZ makes no warranties, express or implied, concerning the accuracy of any information that has been transmitted by electronic means.

PLANNING DEPARTMENT USE ONLY (E-PLANS)

SCALE: 1" = 20'

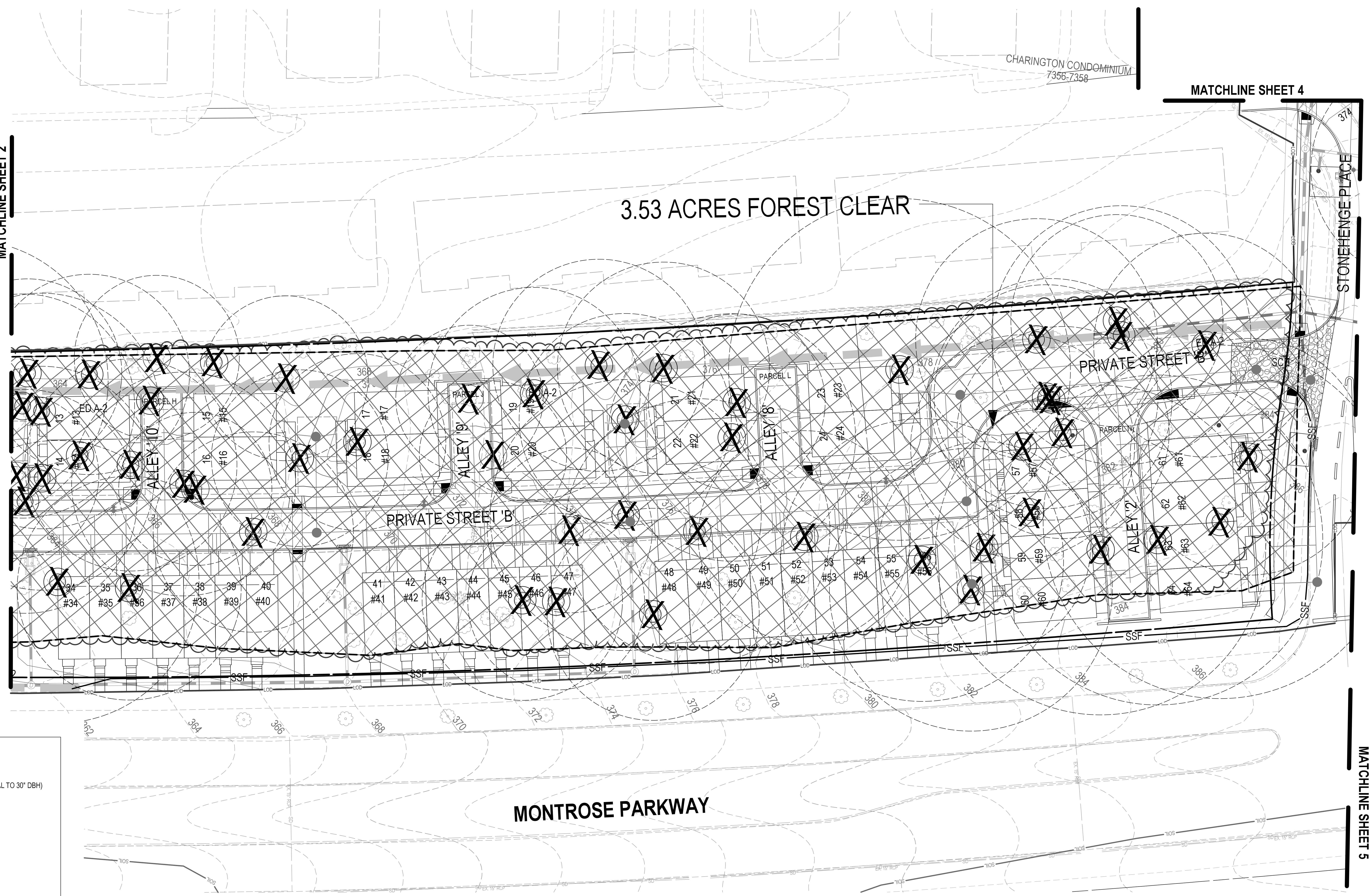
MATCHLINE SHEET 2

MATCHLINE SHEET 4

STONEHENGE PLACE

MATCHLINE SHEET 5

3.53 ACRES FOREST CLEAR



LEGEND:

- SPECIMEN TREE (GREATER THAN OR EQUAL TO 30" DBH)
- SIGNIFICANT TREE (BETWEEN 24-29.9" DBH)
- TREE TO BE REMOVED
- LIMITS OF DISTURBANCE
- PROPOSED CONTOUR
- EXISTING SOIL LINE
- EXISTING FOREST LINE
- FOREST STAND DELINEATION
- FOREST TO BE REMOVED
- WETLAND
- WETLAND BUFFER



DEVELOPER'S CERTIFICATE
 The Undersigned agrees to execute all the features of the Approved Final Forest Conservation Plan No. _____, including financial bonding, forest planning, maintenance, and all other applicable agreements.
 Developer's Name: WILGUS CONSTRUCTION CO., INC. ROBERT A. WAZZUCA
 Company: CORPSE PERSON
 Address: 7811 MONTROSE ROAD, POTOMAC, MD 20854
 Phone: 301-369-4421
 Signature: _____

SOLTESZ, INC.
 Rockville Office
 2 Research Place, Suite 100
 Rockville, MD 20850
 P. 301.948.2750 F. 301.948.9067
 www.soltesz.com

NO.	DATE	REVISIONS	BY	DATE
DESIGNED:	JANUARY 2020	CAO STANDARDS VERSION: V8 - NCS	KDL	
TECHNICIAN:		JW		
CHECKED:			KDL	

MISS UTILITY NOTE
 INFORMATION CONCERNING EXISTING UNDERGROUND UTILITIES WAS OBTAINED FROM AVAILABLE RECORDS. THE CONTRACTOR MUST DETERMINE THE EXACT LOCATION AND ELEVATION OF ALL EXISTING UTILITIES AND UTILITY CROSSINGS BY ENGINEER TEST PITS BY HAND, WELL IN ADVANCE OF THE START OF EXCAVATION. CONTACT "MISS UTILITY" AT 1-800-261-7777 48 HOURS PRIOR TO THE START OF EXCAVATION. IF CLEARANCES ARE LESS THAN SHOWN ON THIS PLAN OR TWELVE (12) INCHES, WHOEVER IS LESS, CONTACT THE ENGINEER AND THE UTILITY COMPANY BEFORE PROCEEDING WITH CONSTRUCTION. CLEARANCES LESS THAN NOTED MAY REQUIRE REVISIONS TO THIS PLAN.

OWNER/DEVELOPER/APPLICANT
 WILGUS/MONTROSE ASSOCIATES, LLC
 7811 MONTROSE ROAD
 SUITE 200
 POTOMAC, MD 20854
 PHONE: (301) 369-1500
 ROCKEN@WILGUS.COM
 RICHARD COHEN

MAP	ADC	GRID	5285
TAX MAP	QC02	ZONING CATEGORY:	CR-30 (C-10, R-10, R-20, R-30, R-40, R-50, R-60, R-70, R-80, R-90, R-100)
WBCS 200 SHEET	215 NW 06	SITE DATUM:	HORIZONTAL: NAD83 VERTICAL: NAD83



PRELIMINARY FCP

PRELIMINARY FOREST CONSERVATION PLAN
WILGUS TRACT
120200140

POTOMAC (1ST) ELECTION DISTRICT, MONTGOMERY COUNTY, MARYLAND

SHEET **3**
OF **7**
PROJECT NO.
1325-02-01