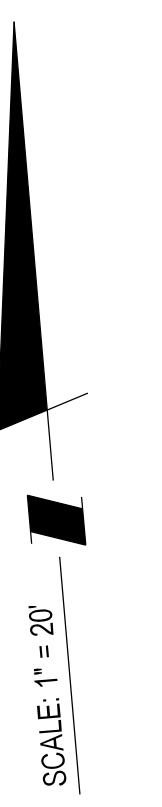
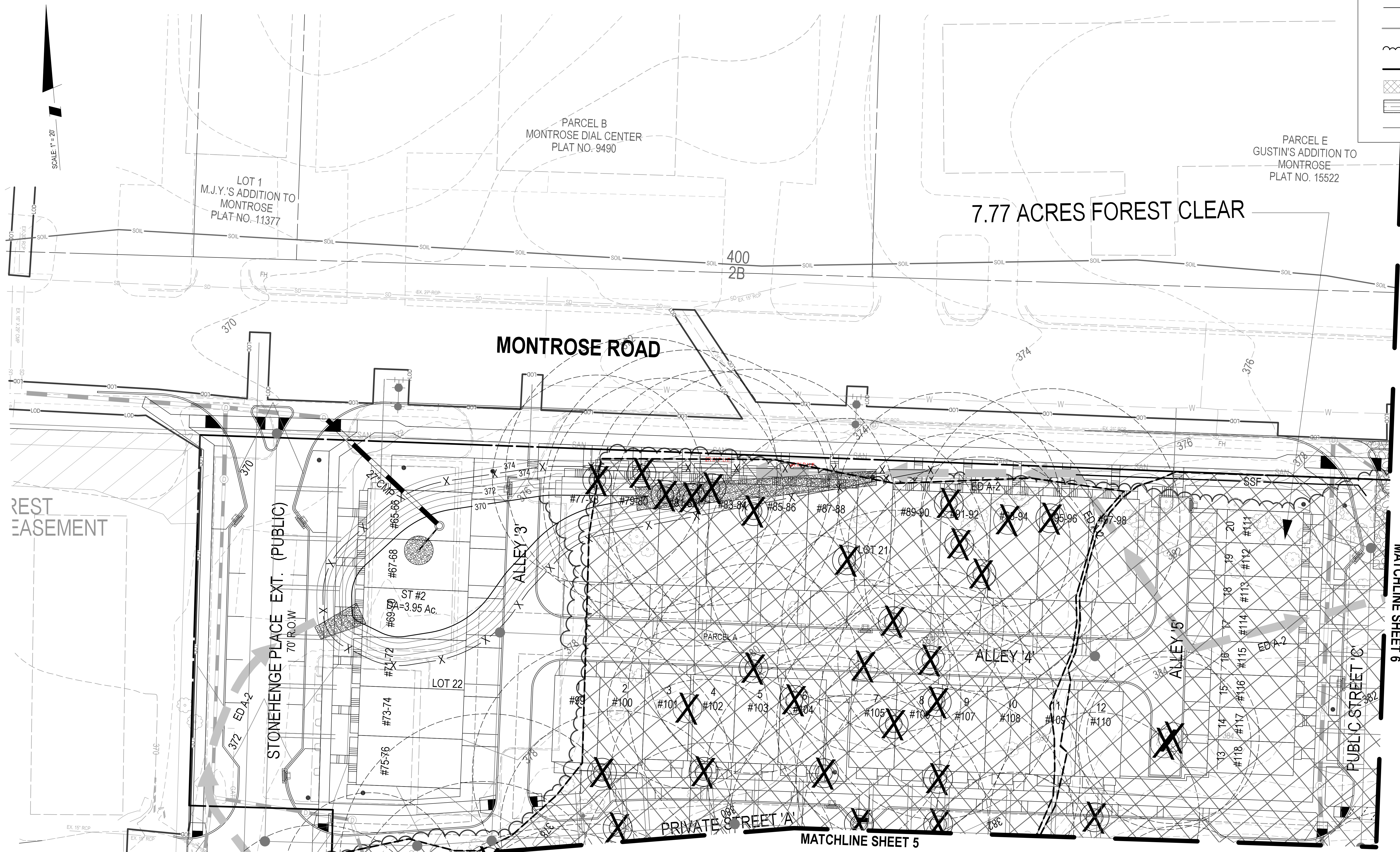


The original of this drawing document was prepared by Soltesz, Inc. (SOLTESZ). This document was not obtained directly from SOLTESZ, Inc. SOLTESZ, Inc. SOLTESZ cannot guarantee that unauthorized changes and/or alterations were not made by others. If verification of the information contained herein is needed, contact should be made directly with SOLTESZ. SOLTESZ makes no warranties, express or implied, concerning the accuracy of any information that has been transmitted by electronic means.

PLANNING DEPARTMENT USE ONLY (E-PLANS)



LEGEND:	
	SPECIMEN TREE (GREATER THAN OR EQUAL TO 30' DBH)
	SIGNIFICANT TREE (BETWEEN 24-29.9' DBH)
	TREE TO BE REMOVED
	LIMITS OF DISTURBANCE
	PROPOSED CONTOUR
	EXISTING SOIL LINE
	EXISTING FOREST LINE
	FOREST STAND DELINEATION
	FOREST TO BE REMOVED
	WETLAND
	WETLAND BUFFER



MATCHLINE SHEET 3

MATCHLINE SHEET 5

MATCHLINE SHEET 6



DEVELOPER'S CERTIFICATE

The Undersigned agrees to execute all the features of the Approved Final Forest Conservation Plan No. _____, including financial bonding, forest planting, maintenance, and all other applicable agreements.

Developer's Name: WILCO CONSTRUCTION CO., INC. ROBERT A. MAZZUCA
Company: Corbett Person

Address: 7811 MONTROSE ROAD, POTOMAC, MD 20854

Phone: 301-369-4421

Signature: _____

SOLTESZ, INC.

Rockville Office
2 Research Place, Suite 100
Rockville, MD 20850
P. 301.948.2750 F. 301.948.9067

Rockville
Lanham
Waldorf
Leonardtown
Frederick
Soltesz DC, LLC

www.soltesz.com

NO.	DATE	DESIGNED	CAO STANDARDS VERSION	TECHNICIAN	REVISIONS	BY	DATE
1	JANUARY 2020	KDL	V8 - RCS	JW			

CHECKED: KDL

MISS UTILITY NOTE

INFORMATION CONCERNING EXISTING UNDERGROUND UTILITIES WAS OBTAINED FROM AVAILABLE RECORDS; THE CONTRACTOR MUST DETERMINE THE EXACT LOCATION AND ELEVATION OF ALL EXISTING UTILITIES AND UTILITY CROSSINGS BY ENGINEERING TEST PITS BY HAND, WELL IN ADVANCE OF THE START OF EXCAVATION. CONTACT MISS UTILITY AT 1-800-261-7777. 48 HOURS PRIOR TO THE START OF EXCAVATION, IF CLEARANCES ARE LESS THAN SHOWN ON THIS PLAN OR TWELVE (12) INCHES, WHOEVER IS LESS, CONTACT THE ENGINEER AND THE UTILITY COMPANY BEFORE PROCEEDING WITH CONSTRUCTION. CLEARANCES LESS THAN NOTED MAY REQUIRE REVISIONS TO THIS PLAN.

OWNER/DEVELOPER/APPLICANT

WILGUS/MONTROSE ASSOCIATES, LLC
7811 MONTROSE ROAD
SUITE 200
POTOMAC, MD 20854
PHONE: (301) 399-1500
ROCKEN@WILCO.COM
RICHARD COHEN

MAP: ADC	GRID: 5285
TAX MAP: GC02	ZONING CATEGORY: CD-20 (24' TO 30' W/ 20' GRASSY CLOSURE, HD)
WBCS 200 SHEET: 215 NW 06	
SITE DATUM: HORIZONTAL: NAD83	VERTICAL: NAD83



PRELIMINARY FCP

PRELIMINARY FOREST CONSERVATION PLAN
WILGUS TRACT
120200140

POTOMAC (1ST) ELECTION DISTRICT, MONTGOMERY COUNTY, MARYLAND

SHEET: 4	PROJECT NO.: 1325-02-01
OF: 7	

P:\13250201\Engineer\Sheet_Files\Env\Pre\Preliminary FCP\10-FCP-120200140-004.sht Scale= 20,000.00 ft/in. User= JWhims PLTran= PDF_Grey_300.pltcd PenB= TEXT_SUB.tbl 4/21/2020 3:51:57 PM