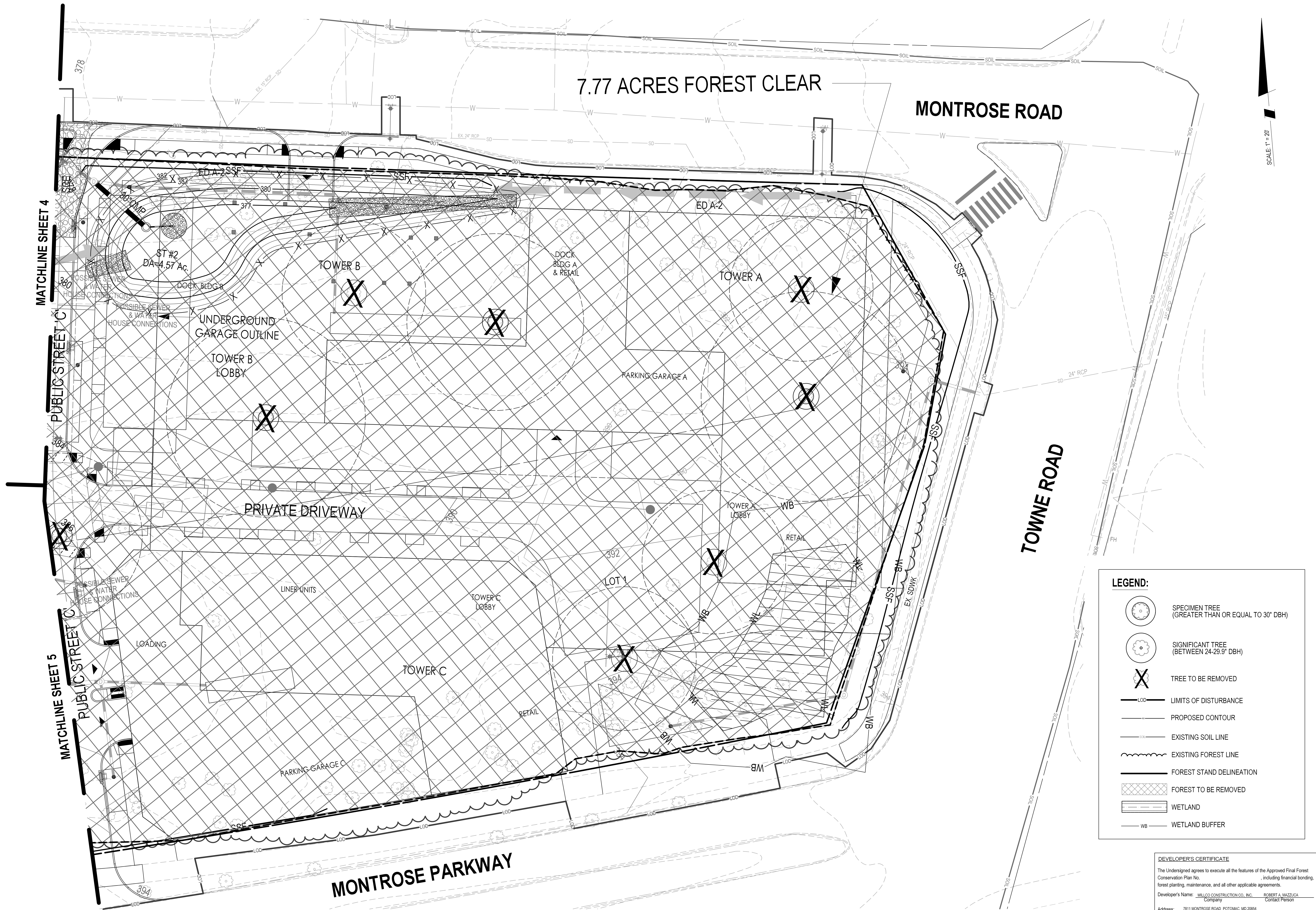


The original of this drawing document was prepared by Soltesz, Inc. (SOLTESZ). This document was not obtained directly from SOLTESZ, Inc. SOLTESZ, Inc. cannot guarantee that unauthorized changes and/or alterations were not made by others. If verification of the information contained herein is needed, contact should be made directly with SOLTESZ, Inc. SOLTESZ makes no warranties, express or implied, concerning the accuracy of any information that has been transmitted by electronic means.

PLANNING DEPARTMENT USE ONLY (E-PLANS)



**LEGEND:**

	SPECIMEN TREE (GREATER THAN OR EQUAL TO 30" DBH)
	SIGNIFICANT TREE (BETWEEN 24-29.9" DBH)
	TREE TO BE REMOVED
	LIMITS OF DISTURBANCE
	PROPOSED CONTOUR
	EXISTING SOIL LINE
	EXISTING FOREST LINE
	FOREST STAND DELINEATION
	FOREST TO BE REMOVED
	WETLAND
	WETLAND BUFFER

**DEVELOPER'S CERTIFICATE**

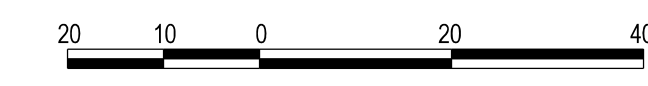
The Undersigned agrees to execute all the features of the Approved Final Forest Conservation Plan No. \_\_\_\_\_, including financial bonding, forest planting, maintenance, and all other applicable agreements.

Developer's Name: WILGUS CONSTRUCTION CO., INC. ROBERT A. MAZZUCA  
CORPORATE PERSON

Address: 7811 MONTROSE ROAD, POTOMAC, MD 20854

Phone: 301-369-1421

Signature: \_\_\_\_\_



**SOLTESZ, INC.**

Rockville  
Lanham  
Waldorf  
Leonardtown  
Frederick  
Soltesz DC, LLC

---

**ROCKVILLE OFFICE**  
2 Research Place, Suite 100  
Rockville, MD 20850  
P. 301.948.2750 F. 301.948.9067  
www.solteszco.com

NO.	DATE	REVISIONS	BY	DATE
DESIGNED: KDL	JANUARY 2020	CAO STANDARDS VERSION: V8 - RCS	TECHNICIAN: JW	CHECKED: KDL

**MISS UTILITY NOTE**

INFORMATION CONCERNING EXISTING UNDERGROUND UTILITIES WAS OBTAINED FROM AVAILABLE RECORDS. THE CONTRACTOR MUST DETERMINE THE EXACT LOCATION AND ELEVATION OF ALL EXISTING UTILITIES AND UTILITY CROSSINGS BY EXCAVATION TEST PITS BY HAND, WELL IN ADVANCE OF THE START OF EXCAVATION. CONTACT "MISS UTILITY" AT 1-800-261-7777, 48 HOURS PRIOR TO THE START OF EXCAVATION. IF CLEARANCES ARE LESS THAN SHOWN ON THIS PLAN OR TWELVE (12) INCHES, WHOEVER IS LESS, CONTACT THE ENGINEER AND THE UTILITY COMPANY BEFORE PROCEEDING WITH CONSTRUCTION. CLEARANCES LESS THAN NOTED MAY REQUIRE REVISIONS TO THIS PLAN.

**OWNER/DEVELOPER/APPLICANT**

WILGUS MONTROSE ASSOCIATES, LLC  
7811 MONTROSE ROAD  
SUITE 200  
POTOMAC, MD 20854  
PHONE: (301) 369-1500  
ROCHEM@WILGUS.COM  
RICHARD COHEN

MAP NO.	ADC	GRID	5285
TAX MAP	G062	PLANNING CATEGORY:	CR-20; CU-10; US; R-20; CR-1; CU-1; R-1; HO-1; CR-1; CU-1; R-1; HO-1
WISC 200 SHEET	215 NW 06	SITE DATUM:	
HORIZONTAL:	NAD83	VERTICAL:	NAD83



PRELIMINARY FCP

**PRELIMINARY FOREST CONSERVATION PLAN  
WILGUS TRACT  
# 120200140**

POTOMAC (1ST) ELECTION DISTRICT, MONTGOMERY COUNTY, MARYLAND

SHEET **6**  
OF **7**  
PROJECT NO. **12020-02-01**

DATE: 1/20/20

P:\13020201\Engineer\Sheet\_Files\Env\Preliminary\_FCP\10-FCP-120200140-005.sht Scale= 20.0000 sf / in. User= jwhims PLTDate= PDF\_Gray\_300.pltJob= PRELIM-FCP-10-FCP-120200140-005.sht