

The original of this drawing document was prepared by Soltesz, Inc. (SOLTESZ). This document was not obtained directly from SOLTESZ, Inc. (SOLTESZ). If you are not the original owner of this drawing document, you are not authorized to reproduce, distribute, or use this drawing document in any way. SOLTESZ, Inc. (SOLTESZ) makes no warranty, express or implied, concerning the accuracy of any information that has been transmitted by electronic means.

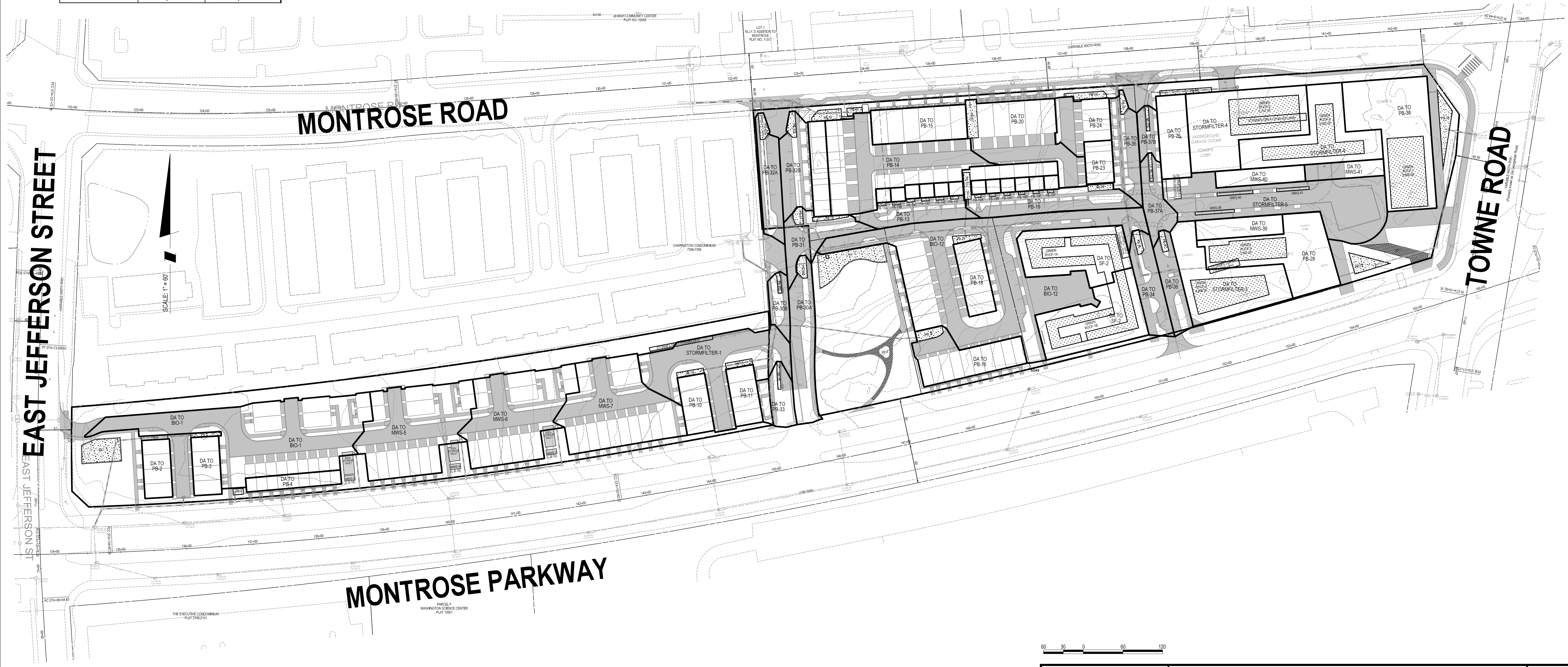
ESD FACILITY NO.	DRAINAGE AREA TO FACILITY	IMPERVIOUS AREA TO FACILITY
	S.F.	S.F.
PB-2	3,696	3,696
PB-3	3,696	3,696
PB-4	3,036	3,036
MWS-5	19,386	16,083
MWS-6	18,567	15,573
MWS-7	19,307	15,884
PB-10	3,696	3,696
PB-11	3,696	3,696
PB-13	5,790	4,099
PB-13A	462	462
PB-13B	462	462
PB-13C	462	462
PB-13D	462	462
PB-13E	462	462
PB-13F	462	462
PB-14	19,877	15,859
PB-15	7,488	7,488
PB-16	5,794	5,044
PB-18	4,704	4,704
PB-19	11,767	8,345
PB-20	14,305	11,882
PB-23	2,688	2,688
PB-24	9,043	8,236
PB-26	5,670	5,670

PB-28	13,876	13,876*
PB-30A	8,587	5,237
PB-30B	2,614	1,400
PB-31	6,209	4,289
PB-32A	6,279	3,811
PB-32B	5,512	3,598
PB-33	3,970	2,084
PB-34	5,743	4,493
PB-35	5,860	4,092
PB-36	4,603	3,379
PB-37A	4,238	3,745
PB-37B	2,607	1,751
PB-38	19,049	19,049
MWS-39	3,960	3,960
MWS-40	3,220	3,220
MWS-41	2,990	2,990
PP-2	2,410	2,410
PP-3	2,812	2,812
GRF-1A	3,947	3,947
GRF-1B	4,288	4,288
GRF-2	4,608	4,608
GRF-3	3,360	3,360
GRF-5	5,701	5,701
GRF-6	4,592	4,592
GRF-7	5,830	5,830

* IMPERVIOUS AREA ALSO TREATED BY GREEN ROOF

STRUCTURAL FACILITY NO.	DRAINAGE AREA TO FACILITY	IMPERVIOUS AREA
	S.F.	S.F.
BIO-1	29,900	23,842
BIO-12	42,948	36,176
STORMFILTER 1	16,504	12,560
STORMFILTER 2	24,400	24,400*
STORMFILTER 3	13,708	13,708*
STORMFILTER 4	30,856	30,856*
STORMFILTER 5	21,470	19,826

* IMPERVIOUS AREA ALSO TREATED BY GREEN ROOF



SOLTESZ, INC.
 Rockville Office
 2 Research Place, Suite 100
 Rockville, MD 20850
 P. 301.948.2750 F. 301.948.9067
 www.soltesz.com

NO.	DATE	DESIGNED	BY	DATE
1	OCTOBER 2019	A.G.		

REVISIONS	BY	DATE
18 - RCS		

NO. _____ DATE _____
 DESIGNED: A.G. TECHNICIAN: D.C.G. CHECKED: B.J.F.

MISS UTILITY NOTE
 INFORMATION CONCERNING EXISTING UNDERGROUND UTILITIES WAS OBTAINED FROM AVAILABLE RECORDS. THE CONTRACTOR MUST DETERMINE THE EXACT LOCATION AND ELEVATION OF ALL EXISTING UTILITIES AND UTILITIES OR SERVICES BY ENGINEER TEST PITS BY HAND, WELL IN ADVANCE OF THE START OF EXCAVATION. CONTACT MISS UTILITY AT 1-800-261-7777 48 HOURS PRIOR TO THE START OF EXCAVATION. IF CLEARANCES ARE LESS THAN SHOWN ON THE PLAN OR TWELVE (12) INCHES, WHICHEVER IS LESS, CONTACT THE ENGINEER AND THE UTILITY COMPANY BEFORE PROCEEDING WITH CONSTRUCTION. CLEARANCES LESS THAN NOTED MAY REQUIRE REVISIONS TO THIS PLAN.

OWNER/DEVELOPER/APPLICANT
 WILGUS ASSOCIATES, LTD PARTNERSHIP, C/O WILCO
 7811 MONTROSE ROAD
 SUITE 200
 POTOMAC, MD 20854
 PHONE: (240) 396-1421
 BMAZZUCA@WILCO.COM
 ROBERT A. MAZZUCA

MAP	ADC	GRID	5285
TAX MAP	GC02		
WISC 200 SHEET			
215 NW 06			
SITE DATUM			
HORIZONTAL	NAD83		
VERTICAL	NAD83		

PROFESSIONAL CERTIFICATION
 I HEREBY CERTIFY THAT THESE DOCUMENTS WERE PREPARED OR APPROVED BY ME, AND THAT I AM A DULY LICENSED PROFESSIONAL ENGINEER UNDER THE LAWS OF THE STATE OF MARYLAND.
 LICENSE NO. 26288 EXPIRATION DATE: 06/21/21

1/7/2020

DRAINAGE AREA MAP

STORM WATER MANAGEMENT CONCEPT
WILGUS TRACT
 7811 MONTROSE ROAD
 POTOMAC (1ST) ELECTION DISTRICT, MONTGOMERY COUNTY, MARYLAND

PROJECT NO. 1325-02-01

SHEET 2 OF 5