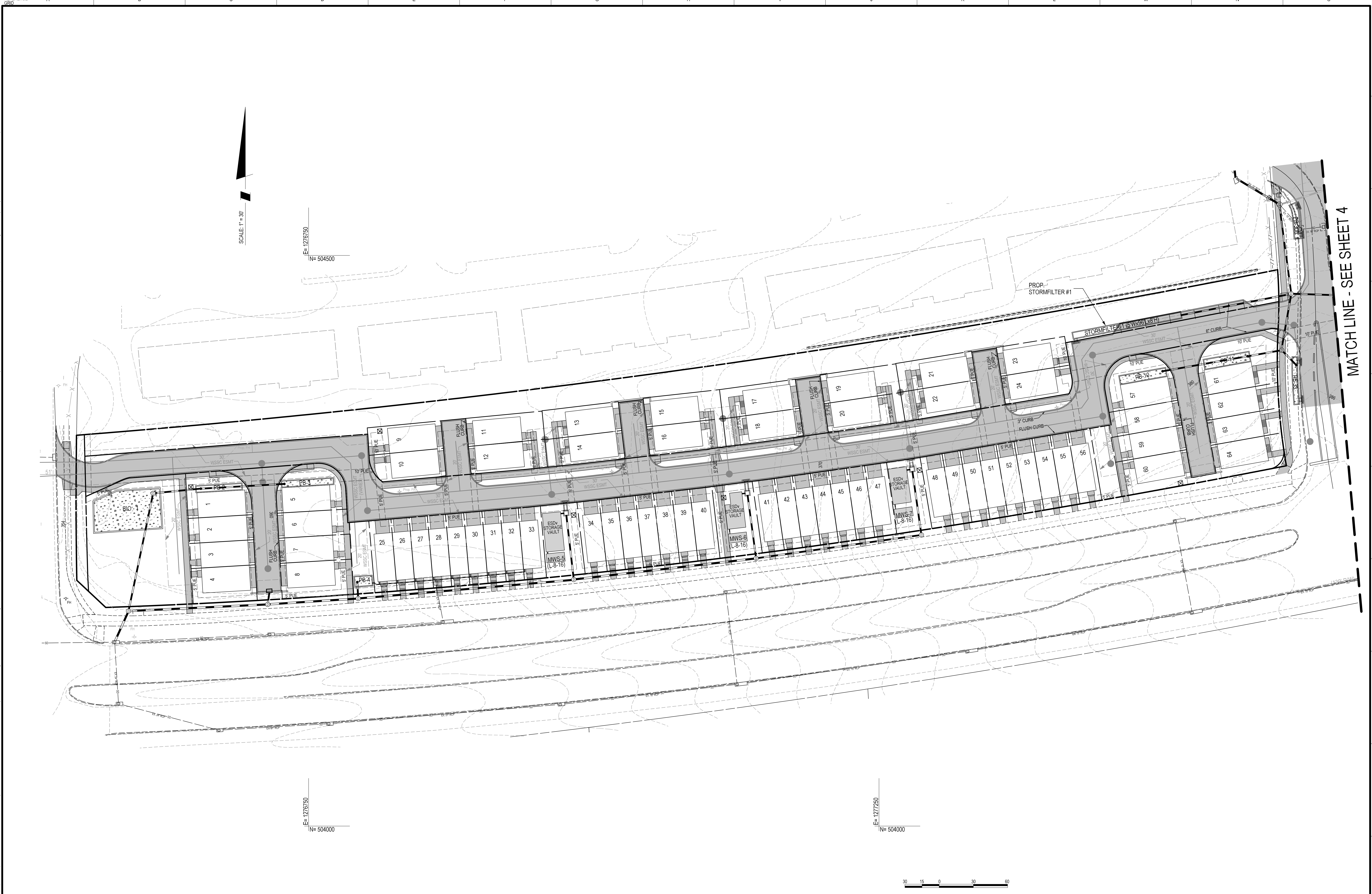


The original of this drawing document was prepared by Soltesz, Inc. (SOLTESZ). If this document was not obtained directly from SOLTESZ, and/or it was transmitted electronically, SOLTESZ cannot guarantee that unauthorized changes and/or alterations were not made by others. If verification of the information contained herein is needed, contact should be made directly with SOLTESZ. SOLTESZ makes no warranties, express or implied, concerning the accuracy of any information that has been transmitted by electronic means.



SCALE: 1" = 30'

E= 1276750
N= 504500

E= 1276750
N= 504000

E= 1277250
N= 504000



PROFESSIONAL CERTIFICATION
I HEREBY CERTIFY THAT THESE DOCUMENTS WERE PREPARED OR APPROVED BY ME, AND THAT I AM A DULY LICENSED PROFESSIONAL ENGINEER UNDER THE LAWS OF THE STATE OF MARYLAND.
LICENSE NO. 26286 EXPIRATION DATE: 06/21/21



1/7/2020

PLAN VIEW

**STORM WATER MANAGEMENT CONCEPT
WILGUS TRACT**

7811 MONTROSE ROAD

POTOMAC (1ST) ELECTION DISTRICT, MONTGOMERY COUNTY, MARYLAND



ROCKVILLE OFFICE
2 Research Place, Suite 100
Rockville, MD 20850
P. 301.948.2750 F. 301.948.9067

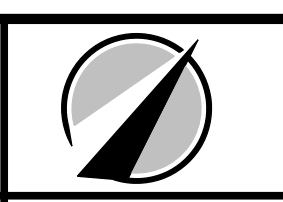
Rockville
Lanham
Waldorf
Leonardtown
Frederick
Soltesz DC, LLC

NO.	DATE	DESIGNED	CAO STANDARDS VERSION	REVISIONS	BY	DATE	CHECKED
	OCTOBER 2019	A.G.	V8 - NCS				B.J.F.

MISS UTILITY NOTE
INFORMATION CONCERNING EXISTING UNDERGROUND UTILITIES WAS OBTAINED FROM AVAILABLE RECORDS; THE CONTRACTOR MUST DETERMINE THE EXACT LOCATION AND ELEVATION OF ALL EXISTING UTILITIES AND UTILITY ORIGINATOR'S TEST FITS BY HAND, WELL IN ADVANCE OF THE START OF EXCAVATION. CONTACT "MISS UTILITY" AT 1-800-261-7777, 48 HOURS PRIOR TO THE START OF EXCAVATION. IF CLEARANCES ARE LESS THAN SHOWN ON THIS PLAN OR TWELVE (12) INCHES, WHICHEVER IS LESS, CONTACT THE ENGINEER AND THE UTILITY COMPANY BEFORE PROCEEDING WITH CONSTRUCTION. CLEARANCES LESS THAN NOTED MAY REQUIRE REVISIONS TO THIS PLAN.

OWNER/DEVELOPER/APPLICANT
WILGUS ASSOCIATES, LTD PARTNERSHIP, C/O WILLCO
7811 MONTROSE ROAD
SUITE 200
POTOMAC, MD 20864
PHONE: (240) 396-1421
BMAZZUCA@WILLCO.COM
ROBERT A. MAZZUCA

MAP	ADC	GRID	5285
TAX MAP	GC02	ZONING CATEGORY	CR-20, CA-10, RA-10, R-20, R-30, R-40, R-50, R-60, R-70, R-80, R-90, R-100, R-110, R-120, R-130, R-140, R-150, R-160, R-170, R-180, R-190, R-200, R-210, R-220, R-230, R-240, R-250, R-260, R-270, R-280, R-290, R-300, R-310, R-320, R-330, R-340, R-350, R-360, R-370, R-380, R-390, R-400, R-410, R-420, R-430, R-440, R-450, R-460, R-470, R-480, R-490, R-500, R-510, R-520, R-530, R-540, R-550, R-560, R-570, R-580, R-590, R-600, R-610, R-620, R-630, R-640, R-650, R-660, R-670, R-680, R-690, R-700, R-710, R-720, R-730, R-740, R-750, R-760, R-770, R-780, R-790, R-800, R-810, R-820, R-830, R-840, R-850, R-860, R-870, R-880, R-890, R-900, R-910, R-920, R-930, R-940, R-950, R-960, R-970, R-980, R-990, R-1000
WBC 200 SHEET	215 NW 06	SITE DATUM	HORIZONTAL: NAD83 VERTICAL: NAD83



SHEET **3**
OF **5**
PROJECT NO. 1325-02-01