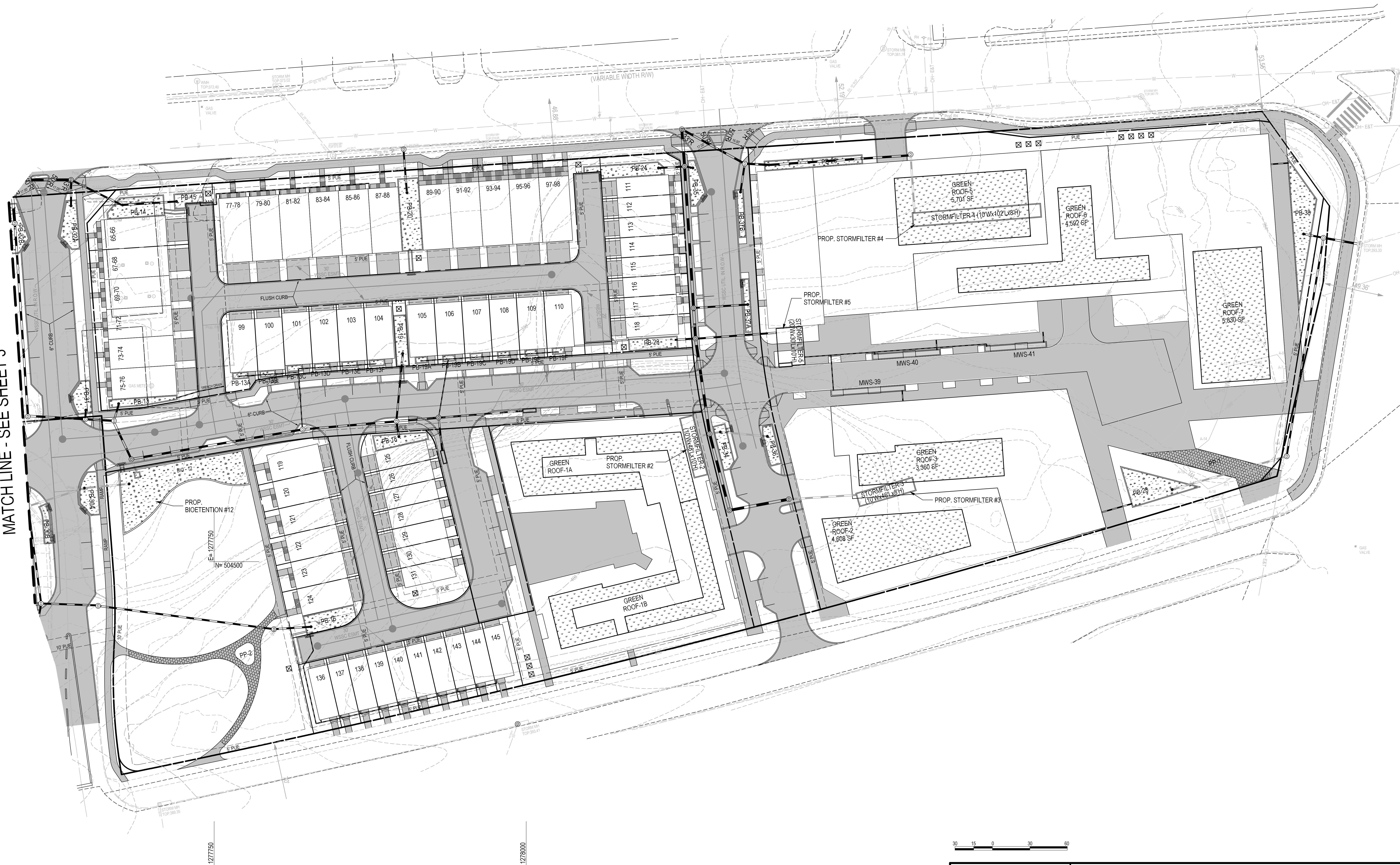


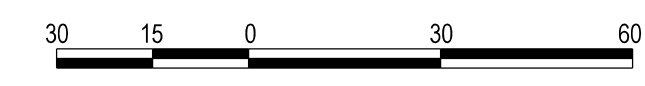
The original of this drawing document was generated by Soltesz, Inc. (SOLTESZ). This document was not obtained directly from SOLTESZ, Inc. and/or its subsidiaries. SOLTESZ, Inc. cannot guarantee that unauthorized changes and/or alterations were not made by others. If verification of the information contained herein is needed, contact should be made directly with SOLTESZ, Inc. SOLTESZ makes no warranties, express or implied, concerning the accuracy of any information that has been transmitted by electronic means.

MATCH LINE - SEE SHEET 3



SCALE: 1" = 30'

E-1277750  
N= 504250  
E-1276800  
N= 504250



**PROFESSIONAL CERTIFICATION**  
I HEREBY CERTIFY THAT THESE DOCUMENTS WERE PREPARED OR APPROVED BY ME, AND THAT I AM A DULY LICENSED PROFESSIONAL ENGINEER UNDER THE LAWS OF THE STATE OF MARYLAND.  
LICENSE NO. 26288 EXPIRATION DATE: 06/21/21



PLAN VIEW

**STORM WATER MANAGEMENT CONCEPT  
WILGUS TRACT**

**7811 MONTROSE ROAD**  
POTOMAC (1ST) ELECTION DISTRICT, MONTGOMERY COUNTY, MARYLAND

**SOLTESZ, INC.**  
Rockville Lanham Waldorf Leonardtown Frederick Soltesz DC, LLC  
Rockville OFFICE  
2 Research Place, Suite 100  
Rockville, MD 20850  
P. 301.948.2750 F. 301.948.9067  
www.solteszco.com

NO.	DATE	DESIGNED	TECHNICIAN	REVISIONS	BY	DATE	CHECKED
1	OCTOBER 2019	A.G.	D.C.G.	18 - RCS			B.J.F.

**MISS UTILITY NOTE**  
INFORMATION CONCERNING EXISTING UNDERGROUND UTILITIES WAS OBTAINED FROM AVAILABLE RECORDS. THE CONTRACTOR MUST DETERMINE THE EXACT LOCATION AND ELEVATION OF ALL EXISTING UTILITIES AND UTILITIES ORIGINATING FROM TEST PITS BY HAND, WELL IN ADVANCE OF THE START OF EXCAVATION. CONTACT "MISS UTILITY" AT 1-800-261-7777, 48 HOURS PRIOR TO THE START OF EXCAVATION. IF CLEARANCES ARE LESS THAN SHOWN ON THE PLAN OR TWELVE (12) INCHES, WHICHEVER IS LESS, CONTACT THE ENGINEER AND THE UTILITY COMPANY BEFORE PROCEEDING WITH CONSTRUCTION. CLEARANCES LESS THAN NOTED MAY REQUIRE REVISIONS TO THIS PLAN.

**OWNER/DEVELOPER/APPLICANT**  
WILGUS ASSOCIATES, LTD PARTNERSHIP, C/O WILCO  
7811 MONTROSE ROAD  
SUITE 200  
POTOMAC, MD 20854  
PHONE: (240) 396-1421  
BMAZZUCA@WILCO.COM  
ROBERT A. MAZZUCA

MAP	ADC	GRID	5285
TAX MAP	GC02	GRID	5285
WBCS 200 SHEET			
215 NW 06			
SITE DATUM			
HORIZONTAL	NAD83		
VERTICAL	NAD83		

PROJECT NO. 1325-02-01  
SHEET 4 OF 5