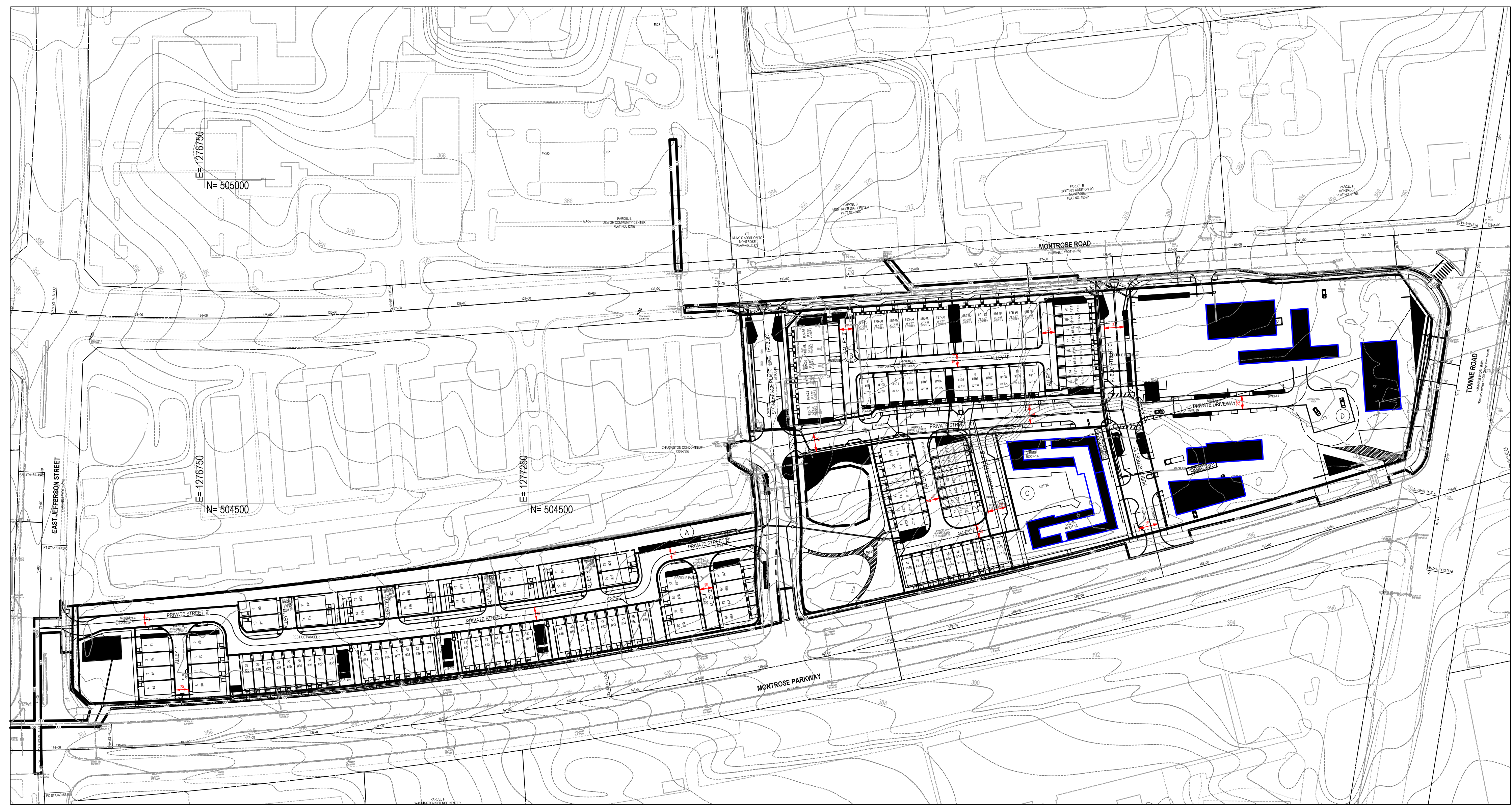


The original of this drawing document was prepared by Soltesz, Inc. (SOLTESZ). This document was not obtained directly from SOLTESZ, Inc. (SOLTESZ). If this document was not obtained directly from SOLTESZ, Inc. (SOLTESZ), it was transmitted electronically, SOLTESZ cannot guarantee that unauthorized changes and/or alterations were not made by others. If verification of the information contained herein is needed, contact should be made directly with SOLTESZ. SOLTESZ makes no warranties, express or implied, concerning the accuracy of any information that has been transmitted by electronic means.

ESD FACILITY NO.	DRAINAGE AREA TO FACILITY	IMPERVIOUS AREA TO FACILITY
	S.F.	S.F.
MWS-1A	14950	11921
MWS-AB	14950	11921
PB-2	3696	3696
PB-3	3696	3696
PB-4	3036	3036
MWS-5	19386	16083
MWS-6	18567	15573
MWS-7	19307	15884
PB-9	16330	12225
PB-10	3696	3696
PB-11	3696	3696
MWS-12A	21474	18088
MWS-12B	21474	18088
PB-13	5790	4099
PB-13A	462	462
PB-13B	462	462
PB-13C	462	462
PB-13D	462	462
PB-13E	462	462
PB-13F	462	462
PB-14A	3735	3735
PB-14B	19877	15859
PB-15	7488	7488
PB-16A	9154	8404
PB-18	4704	4704
PB-19	11767	8345
PB-20	14305	11882
PB-21	12616	12616
PB-22	11842	11783
PB-23	2688	2688
PB-24	9043	8236
PB-25	21470	19648
PB-26	17105	17105
PB-27	13776	13776
MWS-28	12961	12961
PB-30A	8587	5237
PB-30B	2614	1400
PB-31	6209	4289
PB-32A	6279	3811
PB-32B	5512	3598
PB-33	3970	2084
PB-34	5743	4493
PB-35	5860	4092
PB-36	4603	3379
PB-37A	4238	3745
PB-37B	2607	1751
PB-38	19049	19043
MWS-39	2949	2949
MWS-40	1913	1913
MWS-41	1691	1691
MWS-42	1691	1691
MWS-43	2994	2994



LEGEND	
	LIMITS OF DISTURBANCE
	PROPERTY LINE
	TEMP. WATER STORAGE
	PLANTER BOX
	PROPOSED DRAINAGE DIVIDE



PROFESSIONAL CERTIFICATION
 I HEREBY CERTIFY THAT THESE DOCUMENTS WERE PREPARED OR APPROVED BY ME, AND THAT I AM A DULY LICENSED PROFESSIONAL ENGINEER UNDER THE LAWS OF THE STATE OF MARYLAND.
 LICENSE NO. _____ EXPIRATION DATE: _____



STORM DRAIN DRAINAGE AREA MAP

PRELIMINARY STORM DRAIN PLANS
WILGUS TRACT
 7811 MONTROSE ROAD
 POTOMAC (1ST) ELECTION DISTRICT, MONTGOMERY COUNTY, MARYLAND



SHEET **2**
 OF **5**
 PROJECT NO.
 1326-02-01

SOLTESZ, INC.
 Engineering
 Surveying
 Planning
 Environmental Sciences

Rockville
 Lanham
 Waldorf
 Leonardtown
 Frederick
 Soltesz DC, LLC

ROCKVILLE OFFICE
 2 Research Place, Suite 100
 Rockville, MD 20850
 P. 301.948.2750 F. 301.948.9067
 www.solteszco.com

NO.	DATE	REVISIONS	BY	DATE

DATE: OCTOBER 2019
 DESIGNED: A.G.
 CAD STANDARDS VERSION: V8 - NCS
 TECHNICIAN: D.C.G.
 CHECKED: B.J.F.

MISS UTILITY NOTE
 INFORMATION CONCERNING EXISTING UNDERGROUND UTILITIES WAS OBTAINED FROM AVAILABLE RECORDS. THE CONTRACTOR MUST DETERMINE THE EXACT LOCATION AND ELEVATION OF ALL EXISTING UTILITIES AND UTILITY CROSSINGS BY ENGINEER TEST PITS BY HAND, WELL IN ADVANCE OF THE START OF EXCAVATION. CONTACT "MISS UTILITY" AT 1-800-261-7777, 48 HOURS PRIOR TO THE START OF EXCAVATION. IF CLEARANCES ARE LESS THAN SHOWN ON THIS PLAN OR TWELVE (12) INCHES, WHICHEVER IS LESS, CONTACT THE ENGINEER AND THE UTILITY COMPANY BEFORE PROCEEDING WITH CONSTRUCTION. CLEARANCES LESS THAN NOTED MAY REQUIRE REVISIONS TO THIS PLAN.

OWNER/DEVELOPER/APPLICANT
 WILGUS/MONTROSE ASSOCIATES, LLC
 7811 MONTROSE ROAD
 SUITE 200
 POTOMAC, MD 20854
 PHONE: (301) 399-1500
 ROCKEN@WILLCO.COM
 RICHARD COHEN

MAP: ADC	GRID: 5285
TAX MAP: G062	ZONING CATEGORY: CR-20 (C-1, R-1, R-2, R-3, R-4, R-5, R-6, R-7, R-8, R-9)
W83C 200 SHEET	
215 NW 06	
SITE DATUM:	
HORIZONTAL: NAD83	
VERTICAL: NAD83	