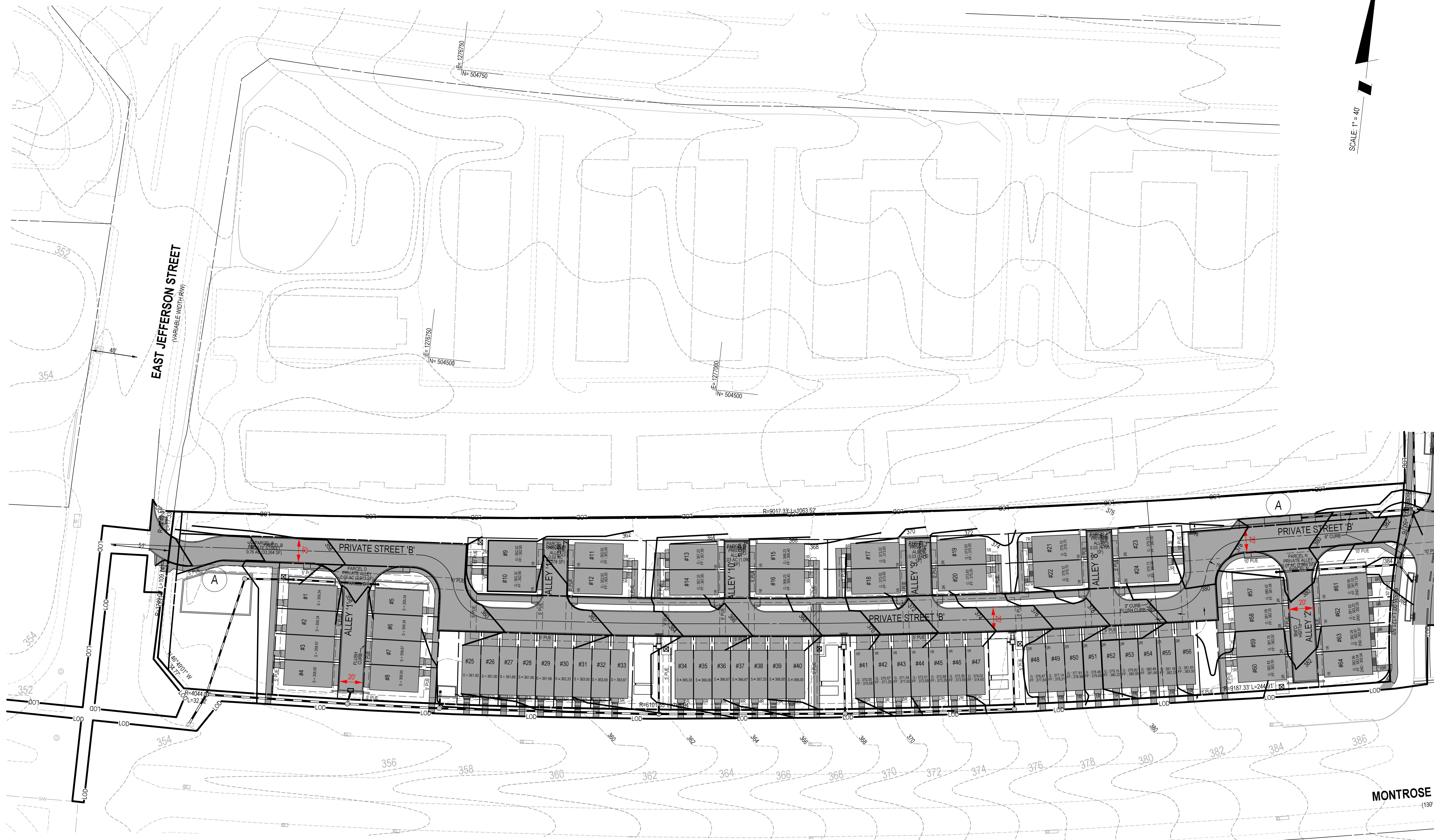


The original of this drawing document was prepared by Soltesz, Inc. (SOLTESZ). This document was not obtained directly from SOLTESZ, and/or it was transmitted electronically. SOLTESZ cannot guarantee that unauthorized changes and/or alterations were not made by others. If verification of the information contained herein is needed, contact should be made directly with SOLTESZ. SOLTESZ makes no warranties, express or implied, concerning the accuracy of any information that has been transmitted by electronic means.



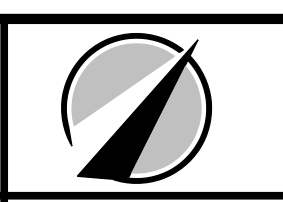
PROFESSIONAL CERTIFICATION
 I HEREBY CERTIFY THAT THESE DOCUMENTS WERE PREPARED OR APPROVED BY ME, AND THAT I AM A DULY LICENSED PROFESSIONAL ENGINEER UNDER THE LAWS OF THE STATE OF MARYLAND.
 LICENSE NO. _____ EXPIRATION DATE: _____



STORM DRAIN CONCEPT PLAN VIEW

**PRELIMINARY STORM DRAIN PLANS
 WILGUS TRACT**

7811 MONTROSE ROAD
 POTOMAC (1ST) ELECTION DISTRICT, MONTGOMERY COUNTY, MARYLAND



SHEET	3
OF	5
PROJECT NO.	1326-02-01

SOLTESZ, INC.
 Rockville Office
 2 Research Place, Suite 100
 Rockville, MD 20850
 P. 301.948.2750 F. 301.948.9067

Rockville
 Lanham
 Waldorf
 Leonardtown
 Frederick
 Soltesz DC, LLC

NO.	DATE	DESIGNED	CAO STANDARDS VERSION	REVISIONS	BY	DATE
1	OCTOBER 2019	A.G.	V8 - NCS			
					B.J.F.	

MISS UTILITY NOTE
 INFORMATION CONCERNING EXISTING UNDERGROUND UTILITIES WAS OBTAINED FROM AVAILABLE RECORDS. THE CONTRACTOR MUST DETERMINE THE EXACT LOCATION AND ELEVATION OF ALL EXISTING UTILITIES AND UTILITY CROSSINGS BY ENGINEERING TESTS BY HAND, WELL IN ADVANCE OF THE START OF EXCAVATION. CONTACT "MISS UTILITY" AT 1-800-261-7777. 48 HOURS PRIOR TO THE START OF EXCAVATION, IF CLEARANCES ARE LESS THAN SHOWN ON THIS PLAN OR TWELVE (12) INCHES, WHOEVER IS LESS, CONTACT THE ENGINEER AND THE UTILITY COMPANY BEFORE PROCEEDING WITH CONSTRUCTION. CLEARANCES LESS THAN NOTED MAY REQUIRE REVISIONS TO THIS PLAN.

OWNER/DEVELOPER/APPLICANT
 WILGUS/MONTROSE ASSOCIATES, LLC
 7811 MONTROSE ROAD
 SUITE 200
 POTOMAC, MD 20854
 PHONE: (240) 399-1500
 ROCKEN@WILGUS.COM
 RICHARD COHEN

MAP	ADC	GRID	5285
TAX MAP	GC02	PLANNING CATEGORY	CR-20, CR-10, CR-05, CR-03, CR-02, CR-01, CR-00, CR-07, CR-08, CR-09, CR-10, CR-11, CR-12, CR-13, CR-14, CR-15, CR-16, CR-17, CR-18, CR-19, CR-20, CR-21, CR-22, CR-23, CR-24, CR-25, CR-26, CR-27, CR-28, CR-29, CR-30, CR-31, CR-32, CR-33, CR-34, CR-35, CR-36, CR-37, CR-38, CR-39, CR-40, CR-41, CR-42, CR-43, CR-44, CR-45, CR-46, CR-47, CR-48, CR-49, CR-50, CR-51, CR-52, CR-53, CR-54, CR-55, CR-56, CR-57, CR-58, CR-59, CR-60, CR-61, CR-62, CR-63, CR-64, CR-65, CR-66, CR-67, CR-68, CR-69, CR-70, CR-71, CR-72, CR-73, CR-74, CR-75, CR-76, CR-77, CR-78, CR-79, CR-80, CR-81, CR-82, CR-83, CR-84, CR-85, CR-86, CR-87, CR-88, CR-89, CR-90, CR-91, CR-92, CR-93, CR-94, CR-95, CR-96, CR-97, CR-98, CR-99, CR-100
WISC 200 SHEET			
SITE DATUM			
HORIZONTAL	NAD83		
VERTICAL	NAD83		