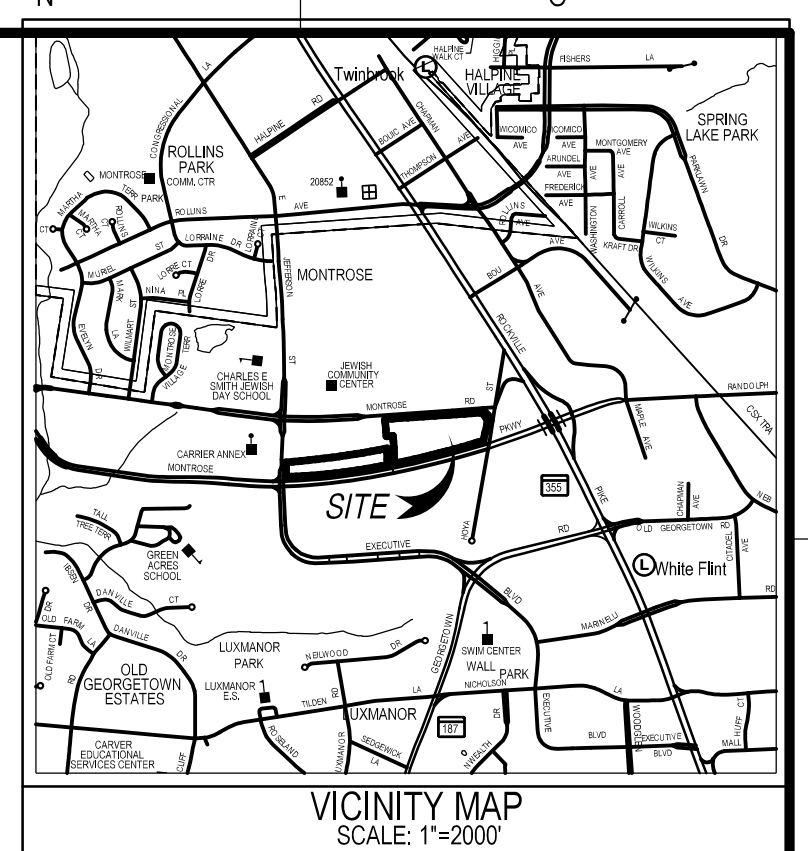


The original of this drawing document was prepared by Soltesz, Inc. (SOLTESZ). This document was not obtained directly from SOLTESZ, and/or it was transmitted electronically. SOLTESZ cannot guarantee that unauthorized changes and/or alterations were not made by others. If verification of the information contained herein is needed, contact should be made directly with SOLTESZ. SOLTESZ makes no warranties, express or implied, concerning the accuracy of any information that has been transmitted by electronic means.

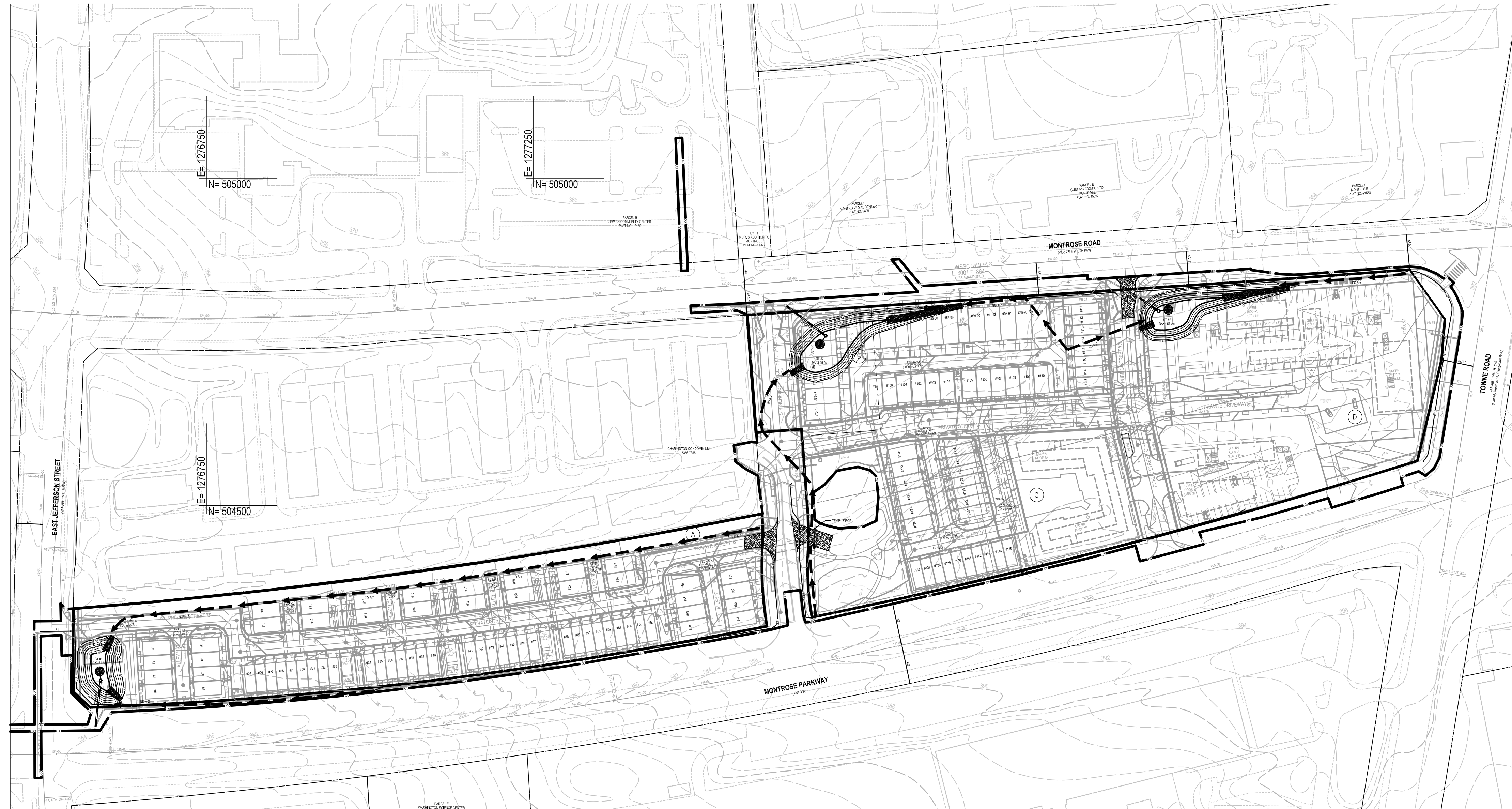


WILGUS TRACT

SEDIMENT CONTROL CONCEPT PLAN

POTOMAC (1st) ELECTION DISTRICT
MONTGOMERY COUNTY, MARYLAND

SCALE: 1" = 100'



SHEET INDEX

1. SEDIMENT CONTROL CONCEPT COVER
2. SEDIMENT CONTROL CONCEPT PLAN
3. SEDIMENT CONTROL CONCEPT PLAN
4. SEDIMENT CONTROL DRAINAGE AREA MAP
5. SEDIMENT CONTROL DETAILS

SOLTESZ, INC.
 Rockville Office
 2 Research Place, Suite 100
 Rockville, MD 20850
 P. 301.948.2750 F. 301.948.9067
 www.soltesz.com

NO.	DATE	DESIGNED	BY	DATE	REVISIONS

MISS UTILITY NOTE
 INFORMATION CONCERNING EXISTING UNDERGROUND UTILITIES WAS OBTAINED FROM AVAILABLE RECORDS. THE CONTRACTOR MUST DETERMINE THE EXACT LOCATION AND ELEVATION OF ALL EXISTING UTILITIES AND UTILITY ORIGINIS BY EXCAVATING TEST PITS BY HAND, WELL IN ADVANCE OF THE START OF EXCAVATION. CONTACT "MISS UTILITY" AT 1-800-261-7777. 48 HOURS PRIOR TO THE START OF EXCAVATION, IF CLEARANCES ARE LESS THAN SHOWN ON THIS PLAN OR TWELVE (12) INCHES, WHICHEVER IS LESS, CONTACT THE ENGINEER AND THE UTILITY COMPANY BEFORE PROCEEDING WITH CONSTRUCTION. CLEARANCES LESS THAN NOTED MAY REQUIRE REVISIONS TO THIS PLAN.

OWNER/DEVELOPER/APPLICANT
 WILGUS-MONTROSE ASSOCIATES, LLC
 7811 MONTROSE ROAD
 SUITE 200
 POTOMAC, MD 20854
 PHONE: (301) 399-1500
 RCOHEN@WILLCO.COM
 RICHARD COHEN

MAP	ADC	GRID	5285
TAX MAP	G062		
WISC 200 SHEET	215 NW 06		
SITE DATUM	HORIZONTAL: NAD83		
	VERTICAL: NAD83		

PROFESSIONAL CERTIFICATION
 I HEREBY CERTIFY THAT THESE DOCUMENTS WERE PREPARED OR APPROVED BY ME, AND THAT I AM A DULY LICENSED PROFESSIONAL ENGINEER UNDER THE LAWS OF THE STATE OF MARYLAND.
 LICENSE NO. _____ EXPIRATION DATE: _____

SEDIMENT CONTROL CONCEPT COVER

**SEDIMENT CONTROL CONCEPT
WILGUS TRACT**

7811 MONTROSE ROAD
 POTOMAC (1ST) ELECTION DISTRICT, MONTGOMERY COUNTY, MARYLAND

SHEET	1
OF	5
PROJECT NO.	1325-02-01