

Department of Permitting Services
Land Development Division
255 Rockville Pike, 2nd Floor
Rockville, MD 20850-4166
Phone: 311 in Montgomery County or (240) 777-0311
Fax (240) 777-4339
http://www.montgomerycountymd.gov/permittingservices/



STANDARD EROSION AND SEDIMENT CONTROL NOTES

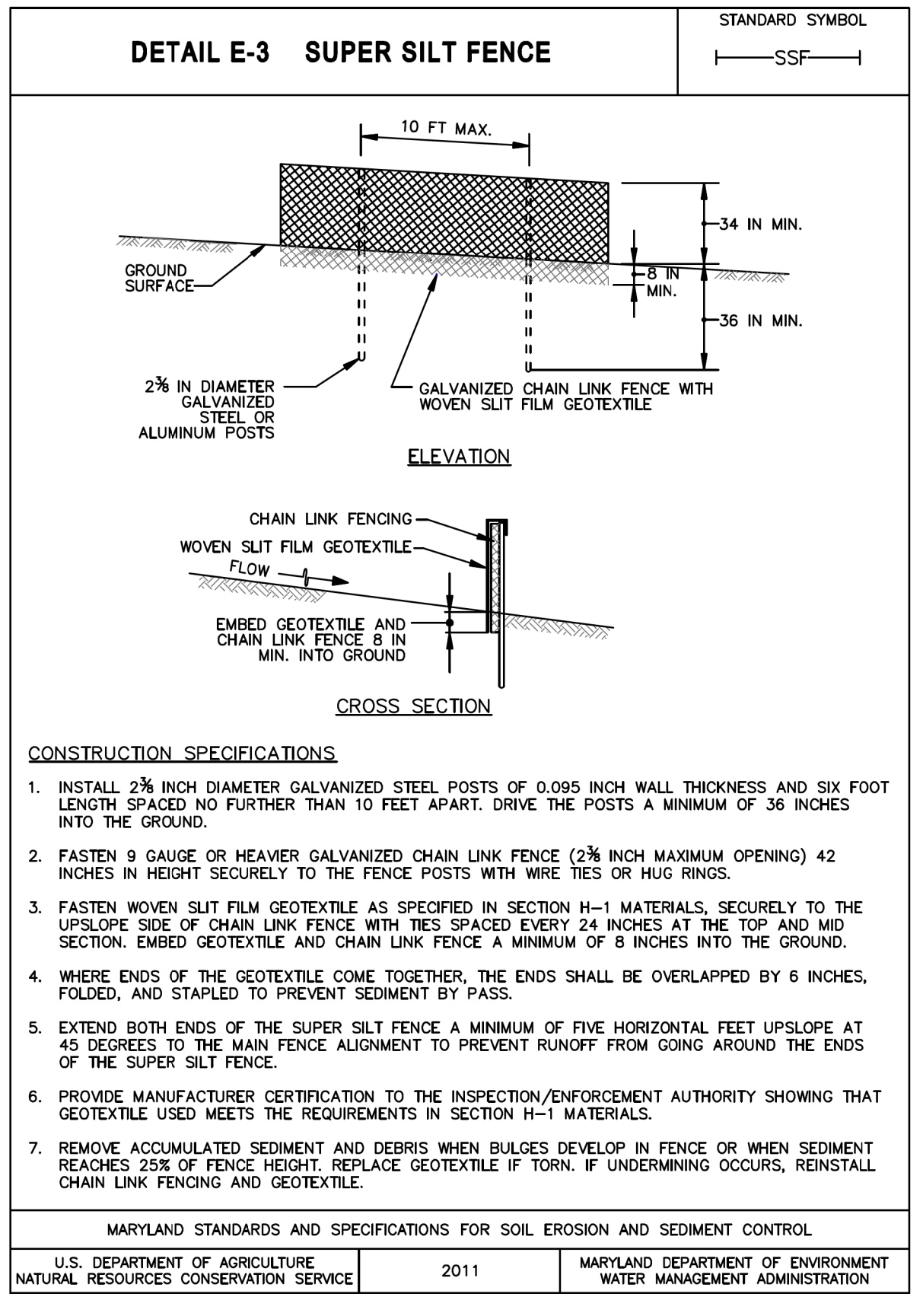
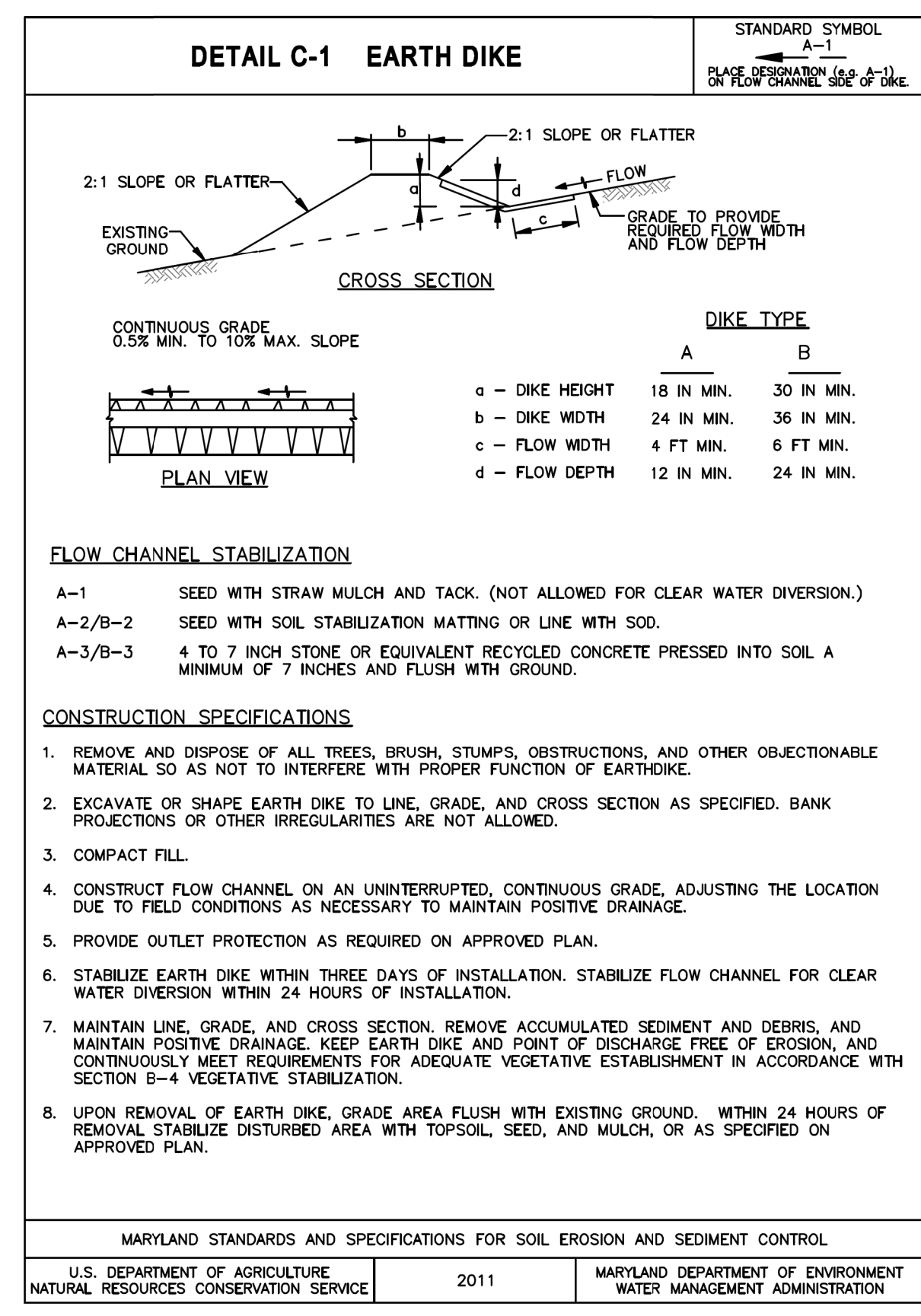
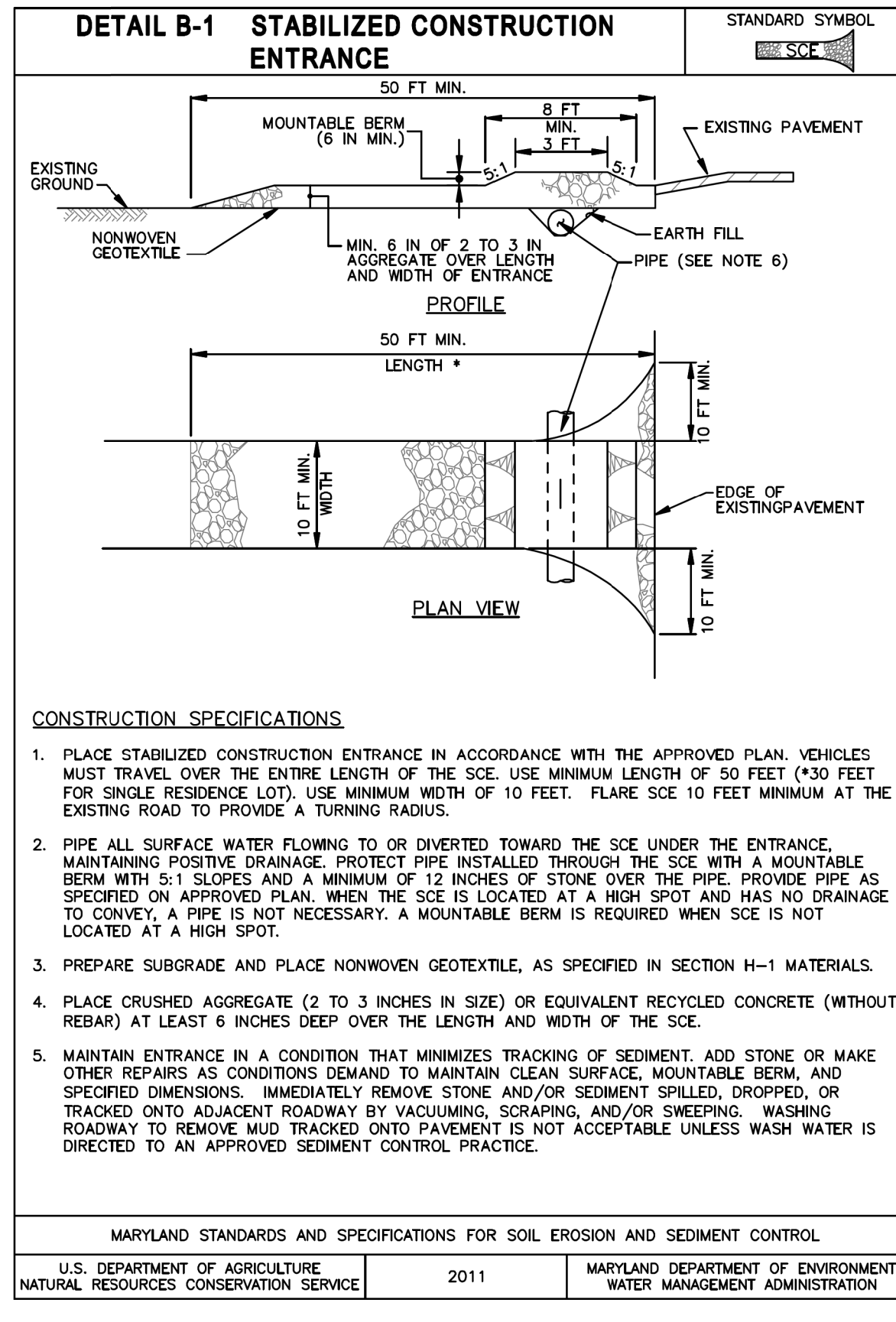
- 1. The permittee shall notify the Department of Permitting Services (DPS) forty-eight (48) hours before commencing any land disturbing activity and, unless waived by the Department, shall be required to hold a pre-construction meeting between them or their representative, their engineer and an authorized representative of the Department.
2. The permittee must obtain inspection and approval by DPS at the following points:
A. At the required pre-construction meeting.
B. Following installation of sediment control measures and prior to any other land disturbing activity.
C. During the installation of a sediment basin or stormwater management structure at the required inspection points (see Inspection Checklist on plan). Notification prior to commencing construction is mandatory.
D. Prior to removal or modification of any sediment control structure(s).
E. Prior to final acceptance.
3. The permittee shall construct all erosion and sediment control measures per the approved plan and construction sequence, shall have them inspected and approved by the Department prior to beginning any other land disturbing activity.
4. The permittee shall protect all points of construction ingress and egress to prevent the deposition of materials onto traversed public thoroughfares.
5. The permittee shall inspect periodically and maintain continuously in effective operating condition, all erosion and sediment control measures until such time as they are removed with prior permission from the Department.
6. Following initial soil disturbance or re-disturbance, permanent or temporary stabilization must be completed within:
a) Three (3) calendar days as to the surface of all perimeter dikes, swales, ditches, perimeter slopes and all slopes steeper than 3 horizontal to 1 vertical (3:1); and
b) Seven (7) calendar days as to all other disturbed or graded areas on the project site not under active grading.
All areas disturbed outside of the perimeter sediment control system must be minimized and stabilized immediately. Maintenance must be performed as necessary to ensure continued stabilization.
7. The permittee shall apply sod, seed, and anchored straw mulch, or other approved stabilization measures to all disturbed areas within seven (7) calendar days after stripping and grading activities have ceased on that area.
8. Prior to removal of sediment control measures, the permittee shall stabilize all contributory disturbed areas with required soil amendments and topsoil, using sod or an approved permanent seed mixture and an approved anchored mulch.

- 15. For finished grading, the permittee shall provide adequate gradients so as to prevent water from standing on the surface of lawns more than twenty-four (24) hours after the end of a rainfall, except in designated drainage courses and swale flow areas, which may drain as long as forty-eight (48) hours after the end of a rainfall.
16. Sediment traps or basins are not permitted within 20 feet of a building which is existing or under construction.
17. All inlets in non-sump areas shall have asphalt berms installed at the time of base paving establishment.
18. The sediment control inspector has the option of requiring additional sediment control measures, as deemed necessary.
19. All trap elevations are relative to the outlet elevation, which must be on existing undisturbed ground.
20. Vegetative stabilization shall be performed in accordance with the Standards and Specifications for Soil Erosion and Sediment Control.
21. Sediment trap(s)/basin(s) shall be cleaned out and restored to the original dimensions when sediment has accumulated to the point of one-half (1/2) the wet storage depth of the trap/basin (1/4 the wet storage depth for SI-11) or when required by the sediment control inspector.
22. Sediment removed from traps/basins shall be placed and stabilized in approved areas, but not within a floodplain.
23. All sediment basins and traps must be surrounded with a welded wire safety fence.
24. No excavation in the areas of existing utilities is permitted unless their location has been determined. Call "Miss Utility" at 1-800-257-7777, 48 hours prior to the start of work.
25. Off-site spoil or borrow areas must have prior approval by DPS.
26. Sediment trap/basin dewatering for cleanout or repair may only be done with the DPS inspector's permission.

- A. Pump discharge may be directed to another on-site sediment trap or basin, provided it is of sufficient volume and the pump intake is located to prevent agitation or action of deposited sediments; or
B. The pump intake may utilize a Removable Pumping Station and must discharge into an undisturbed area through a non-erosive outlet; or
C. The pump intake may be floated and discharge into a Dirt Bag (12 oz. non-woven fabric), or approved equivalent, located in an undisturbed buffer area.
Remember: Dewatering operation and method must have prior approval by the DPS inspector.
27. The permittee must notify the Department of all utility construction activities within the permitted limits of disturbance prior to the commencement of those activities.
28. Topsoil must be applied to all pervious areas within the limits of disturbance prior to permanent stabilization in accordance with MDE "Standards and Specifications for Soil Preparation, Topsoiling, and Soil Amendments".

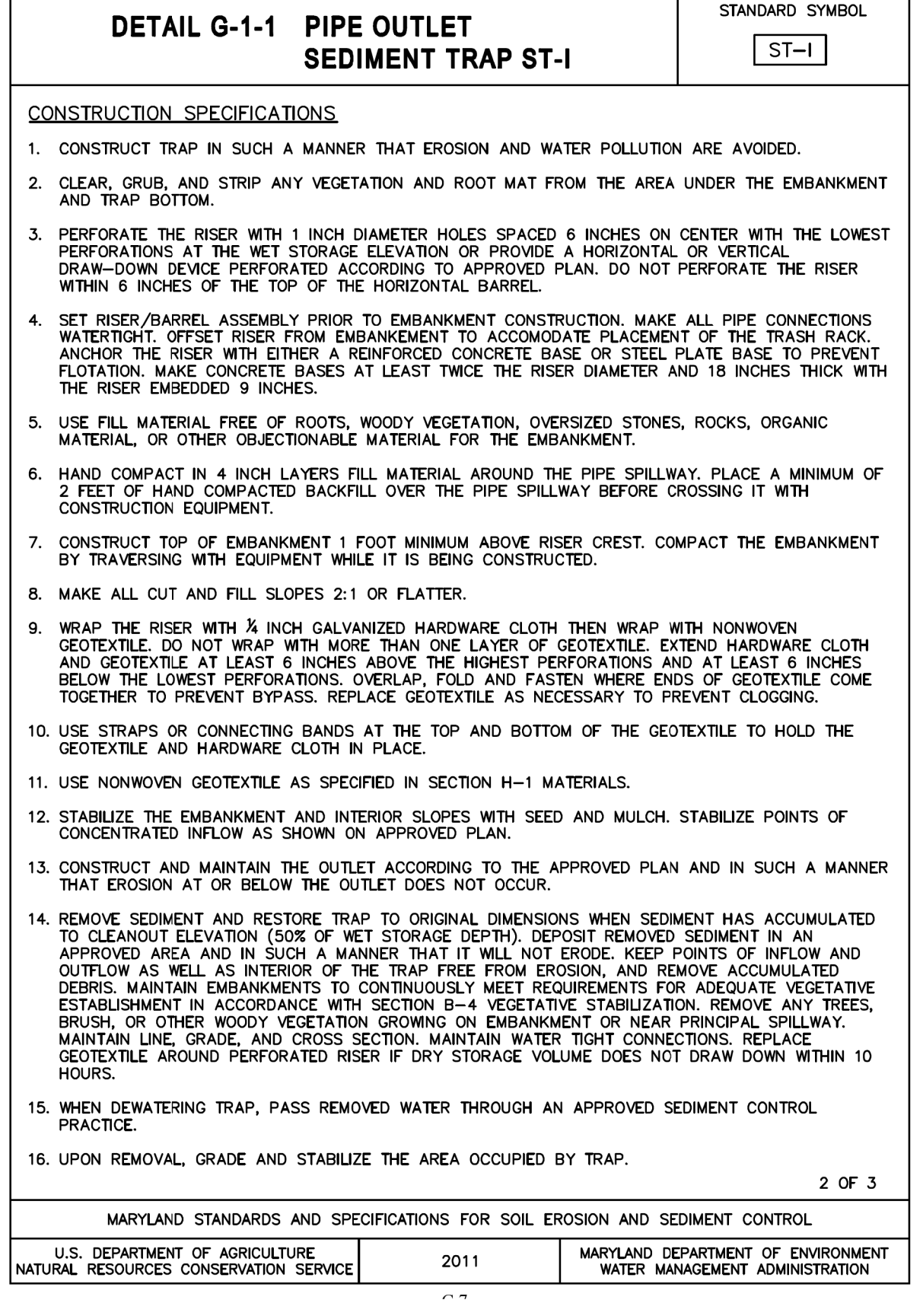
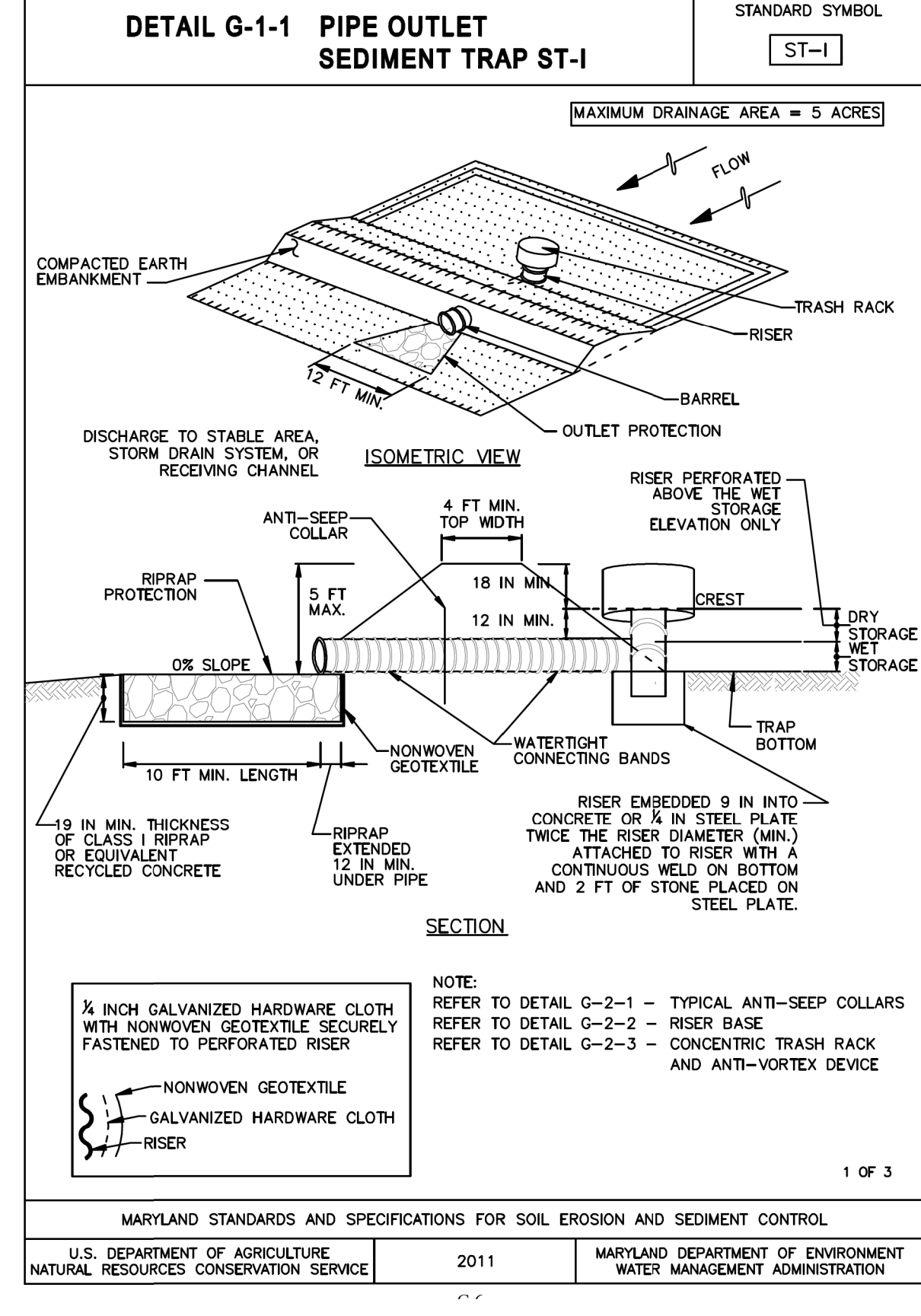
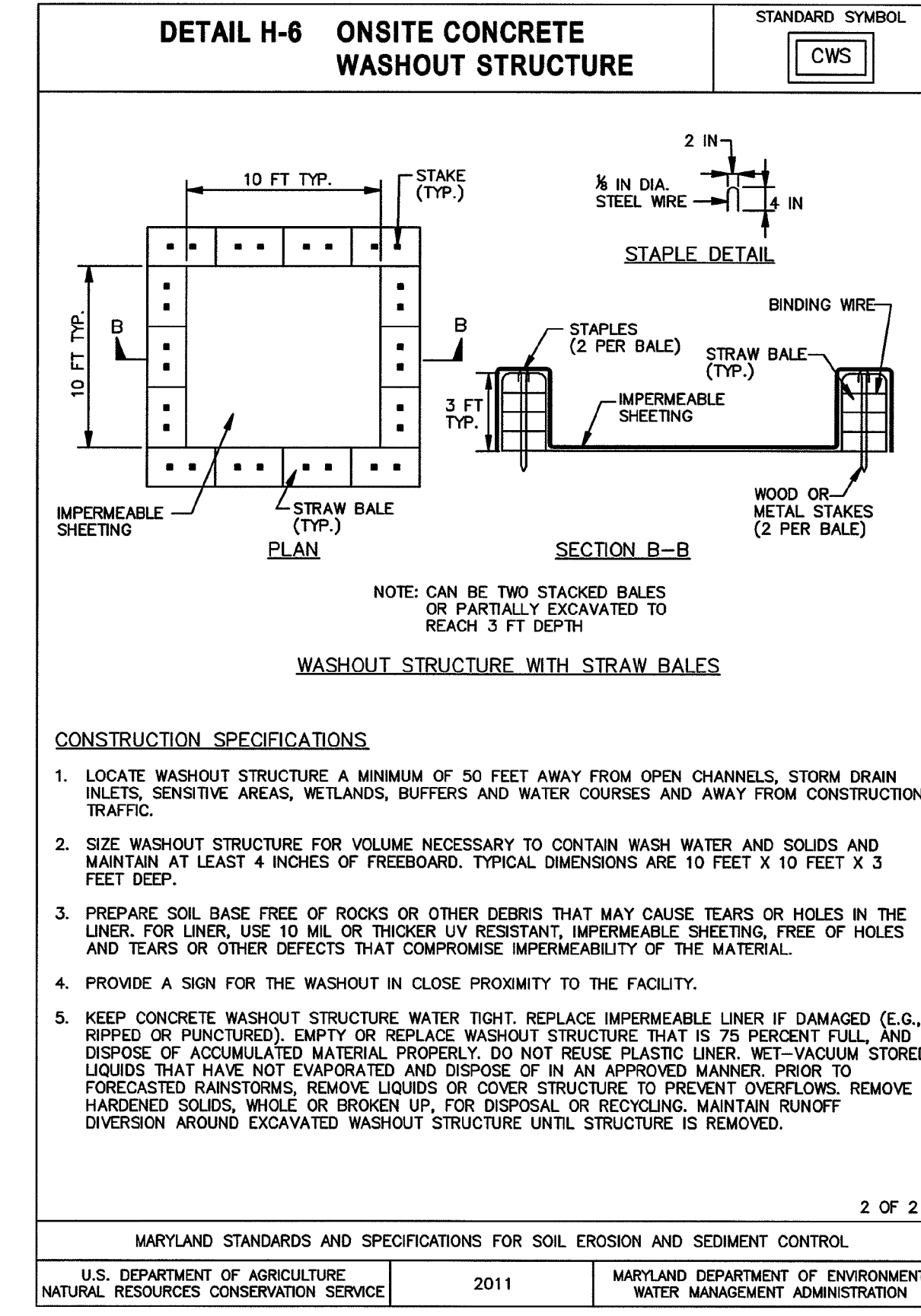
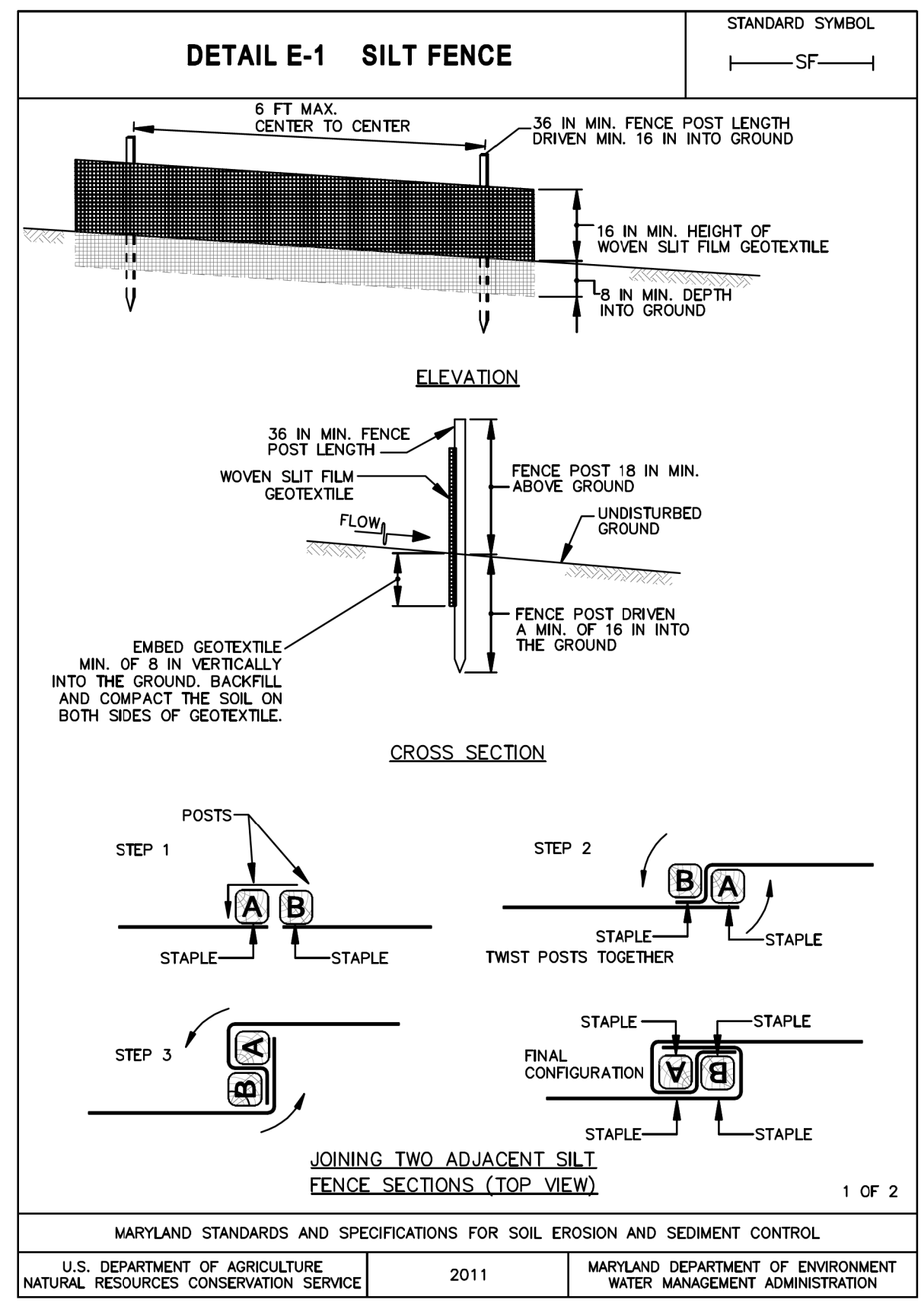
Page 1 of 4
5/21/2013

Page 3 of 4
5/21/2013



- 9. The site permit, work, materials, approved SC/SM plans, and test reports shall be available at the site for inspection by duly authorized officials of Montgomery County.
10. Surface drainage flows over unstabilized cut and fill slopes shall be controlled by either preventing drainage flows from traversing the slopes or by installing mechanical devices to lower the water down slope without causing erosion.
11. Permanent swales or other points of concentrated water flow shall be stabilized within 3 calendar days of establishment with sod or seed with an approved erosion control matting or by other approved stabilization measures.
12. Sediment control devices shall be removed, with permission of the Department, within thirty (30) calendar days following establishment of permanent stabilization in all contributory drainage areas.
13. No permanent cut or fill slope with a gradient steeper than 3:1 will be permitted in lawn maintenance areas or on residential lots.
14. The permittee shall install a splashblock at the bottom of each downspout unless the downspout is connected by a drain line to an acceptable outlet.

Page 2 of 4
5/21/2013



SOLTESZ, INC. logo and contact information including address (Rockville, MD) and phone numbers.

Table with columns for NO., DATE, CAD STANDARDS VERSION, REVISIONS, and BY. Includes a revision record for October 2019.

MISS UTILITY NOTE: INFORMATION CONCERNING EXISTING UNDERGROUND UTILITIES WAS OBTAINED FROM AVAILABLE RECORDS...

OWNER/DEVELOPER/APPLICANT: WILGUS/MONTROSE ASSOCIATES, LLC. 7811 MONTROSE ROAD, SUITE 200, ROCKVILLE, MD 20854.

Table with columns for MAP, TAX MAP, WBSG 200 SHEET, SITE NUMBER, HORIZONTAL, and VERTICAL coordinates.

PROFESSIONAL CERTIFICATION: I HEREBY CERTIFY THAT THESE DOCUMENTS WERE PREPARED OR APPROVED BY ME, AND THAT I AM A DULY LICENSED PROFESSIONAL ENGINEER UNDER THE LAWS OF THE STATE OF MARYLAND.

SEDIMENT CONTROL DETAILS: SEDIMENT CONTROL CONCEPT WILGUS TRACT 7811 MONTROSE ROAD. Includes sheet number 5 of 5 and project number 1120-021.

Vertical text on the left margin: The original of this drawing document was prepared by Soltesz, Inc. (SOLTESZ). This document was not obtained directly from SOLTESZ, Inc. (SOLTESZ). SOLTESZ cannot guarantee that unauthorized changes and/or alterations were not made by others. If modification of this information contained herein is needed, contact should be made directly with SOLTESZ. SOLTESZ makes no warranties, express or implied, concerning the accuracy of any information that has been transmitted by electronic means.