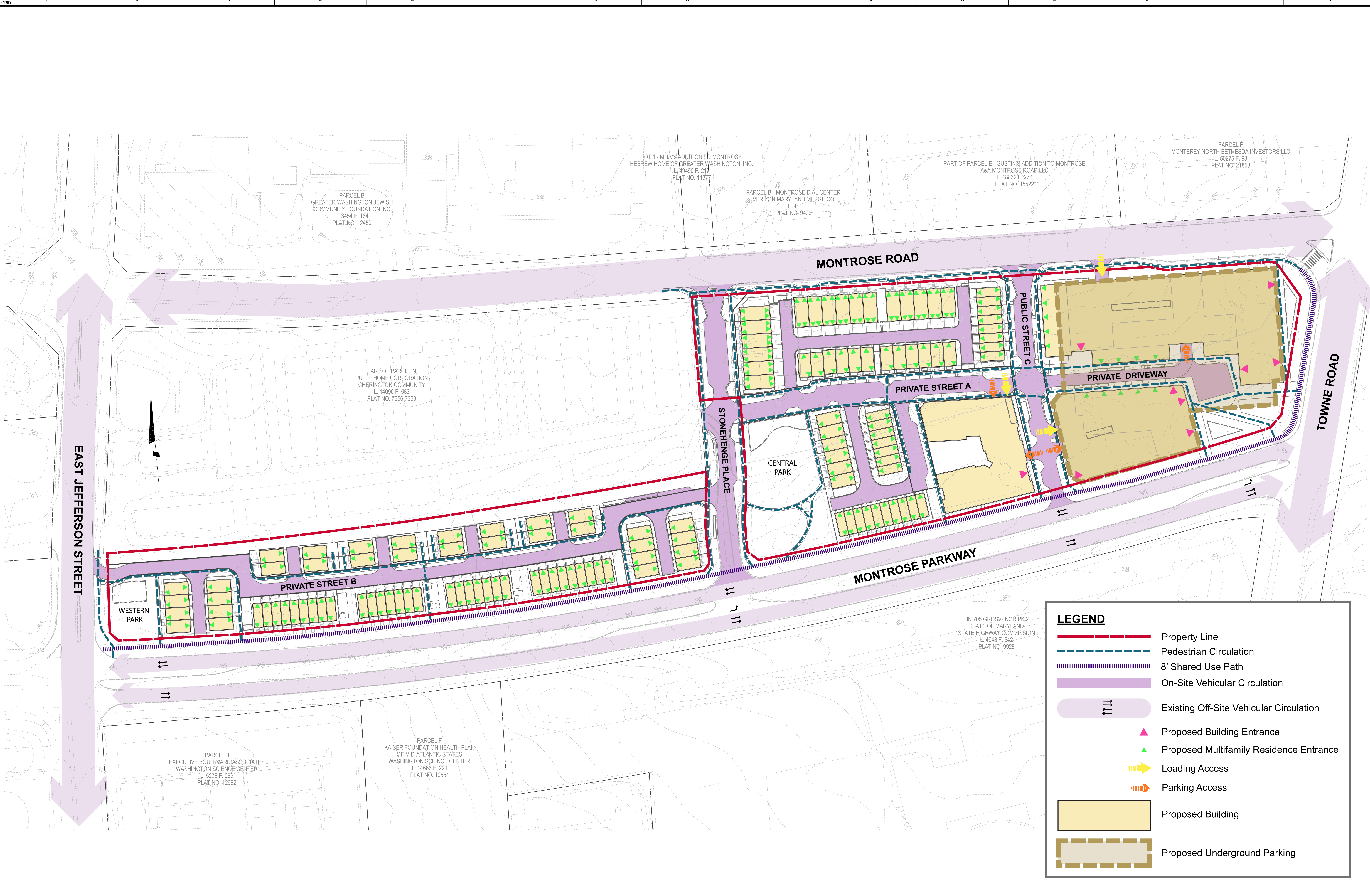


The original of this drawing document was prepared by Soltesz, Inc. (SOLTESZ). This document was not obtained directly from SOLTESZ, Inc. It was transmitted electronically. SOLTESZ cannot guarantee that unauthorized changes and/or alterations were not made by others. If verification of the information contained herein is needed, contact should be made directly with SOLTESZ. SOLTESZ makes no warranties, express or implied, concerning the accuracy of any information that has been transmitted by electronic means.



**LEGEND**

- Property Line
- Pedestrian Circulation
- 8' Shared Use Path
- On-Site Vehicular Circulation
- Existing Off-Site Vehicular Circulation
- Proposed Building Entrance
- Proposed Multifamily Residence Entrance
- Loading Access
- Parking Access
- Proposed Building
- Proposed Underground Parking

**SOLTESZ, INC.**  
 Rockville Office  
 2 Research Place, Suite 100  
 Rockville, MD 20850  
 P. 301.948.2750 F. 301.948.9067  
 www.soltesz.com

NO.	DATE	DESIGNED	TECHNICAL	REVISIONS	BY	DATE
1	JANUARY 2019	G.M.M.	G.M.M.	VI - NCS		

**MISS UTILITY NOTE**  
 INFORMATION CONCERNING EXISTING UNDERGROUND UTILITIES WAS OBTAINED FROM AVAILABLE RECORDS; THE CONTRACTOR MUST DETERMINE THE EXACT LOCATION AND ELEVATION OF ALL EXISTING UTILITIES AND UTILITY CROSSINGS BY EXCAVATING TEST PITS BY HAND, WELL IN ADVANCE OF THE START OF EXCAVATION. CONTACT MISS UTILITY AT 1-800-277-4868 PRIOR TO THE START OF EXCAVATION. IF CLEARANCES ARE LESS THAN SHOWN ON THIS PLAN OR TWELVE (12) INCHES, WHOEVERS LESS, CONTACT THE ENGINEER AND THE UTILITY COMPANY BEFORE PROCEEDING WITH CONSTRUCTION. CLEARANCES LESS THAN NOTED MAY REQUIRE REVISIONS TO THIS PLAN.

**OWNER/DEVELOPER/APPLICANT**  
 WILGUS MONTROSE ASSOCIATES, LLC  
 7811 MONTROSE ROAD  
 SUITE 200  
 POTOMAC, MD 20854  
 PHONE: (240) 399-1800  
 RCOHEN@WILLCO.COM  
 RICHARD COHEN

MAP	SQ	GRID	23
TAX MAP		ZONING CATEGORY	
PAGE, GRID			
WSSC 200' SHEET		XXXX	
215NW06			
SITE DATUM		XXXX	
HORIZONTAL	NAD 83		
VERTICAL	NAD 83		

**CIRCULATION PLAN**

**WILGUS**  
**7811 MONTROSE ROAD**

POTOMAC (1ST) ELECTION DISTRICT, MONTGOMERY COUNTY, MARYLAND

PROJECT NO.  
1326-02-91