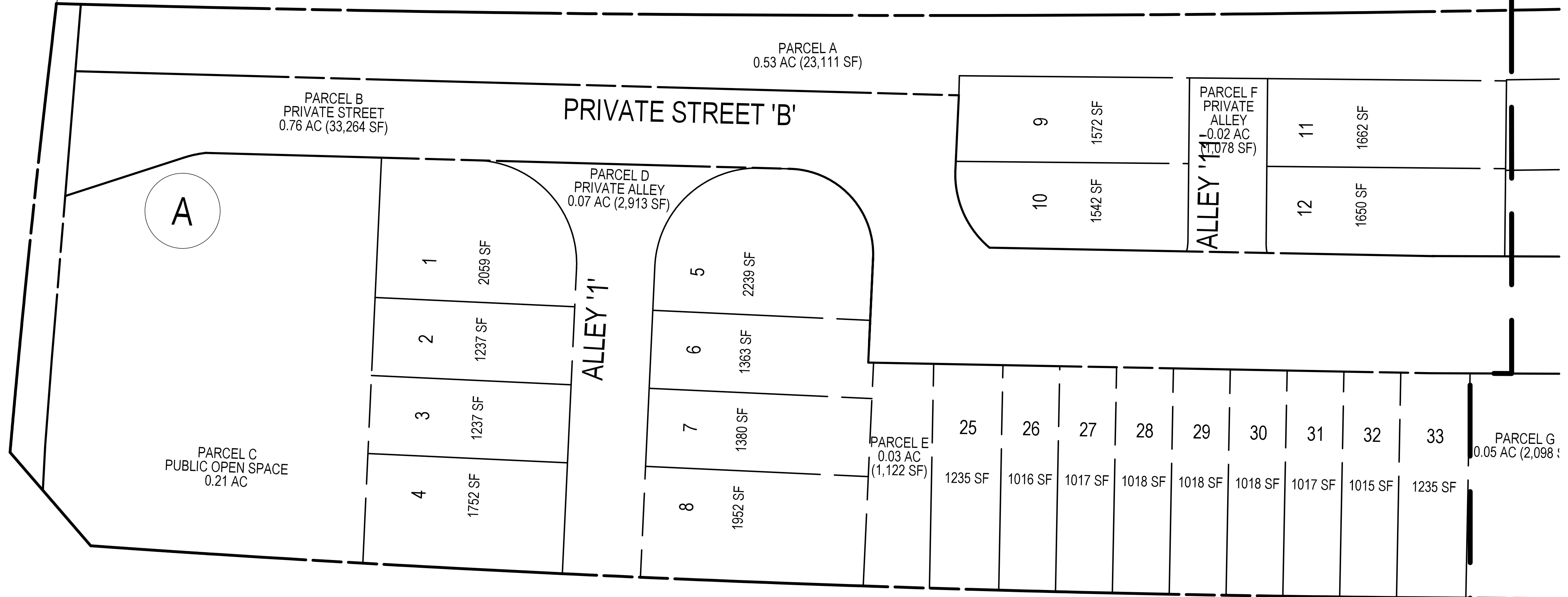


PLANNING DEPARTMENT USE ONLY (E-PLANS)

EAST JEFFERSON STREET



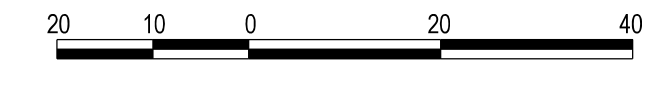
MATCHLINE - SHEET 3

SCALE: 1" = 20'

ENGINEER'S CERTIFICATE

I HEREBY CERTIFY TO THE BEST OF MY PROFESSIONAL KNOWLEDGE, INFORMATION AND BELIEF THAT THE PLAN SHOWN HEREON CONFORMS WITH THE MONTGOMERY COUNTY SUBDIVISION REGULATIONS AS ADOPTED OCTOBER 1961 AND AS AMENDED THEREAFTER.

SIGNATURE: BRANDON J. FRITZ, P.E. DATE: PROJECT MANAGER



PROFESSIONAL CERTIFICATION I HEREBY CERTIFY THAT THESE DOCUMENTS WERE PREPARED OR APPROVED BY ME, AND THAT I AM A DULY LICENSED PROFESSIONAL ENGINEER UNDER THE LAWS OF THE STATE OF MARYLAND.



LOT & PARCEL PLAN

PRELIMINARY PLAN WILGUS TRACT # 120200140

POTOMAC (1ST) ELECTION DISTRICT, MONTGOMERY COUNTY, MARYLAND

SOLTESZ, INC. Rockville Office, 2 Research Place, Suite 100, Rockville, MD 20850. P. 301.948.2750 F. 301.948.9067

Rockville Lanham Waldorf Leonardtown Frederick Soltesz DC, LLC

Table with columns: NO., DATE, DESIGNED, CAO STANDARDS VERSION, REVISIONS, BY, DATE, CHECKED.

MISS UTILITY NOTE INFORMATION CONCERNING EXISTING UNDERGROUND UTILITIES WAS OBTAINED FROM AVAILABLE RECORDS...

OWNER/DEVELOPER/APPLICANT WILGUS/MONTROSE ASSOCIATES LLC 7811 MONTROSE ROAD SUITE 200 POTOMAC, MD 20854

Table with columns: MAP, TAX MAP, WBCS, SITE DATUM, HORIZONTAL, VERTICAL.

North arrow, scale, and sheet information: SHEET 2 OF 5, PROJECT NO. 120200140