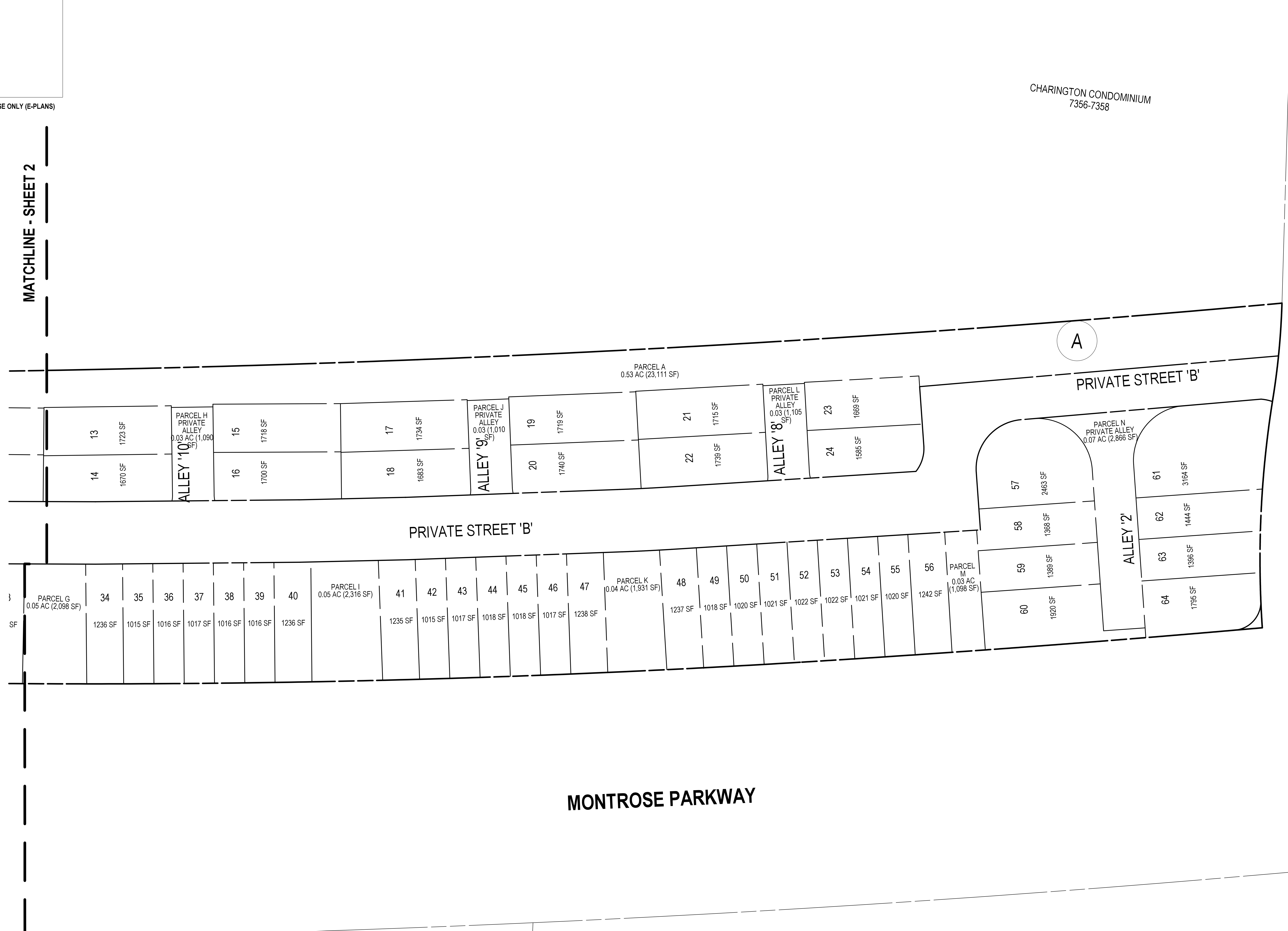


The original of this drawing document was prepared by Soltesz, Inc. (SOLTESZ). This document was not obtained directly from SOLTESZ, and/or it was transmitted electronically. SOLTESZ cannot guarantee that unauthorized changes and/or alterations were not made by others. If verification of the information contained herein is needed, contact should be made directly with SOLTESZ. SOLTESZ makes no warranties, express or implied, concerning the accuracy of any information that has been transmitted by electronic means.

PLANNING DEPARTMENT USE ONLY (E-PLANS)

MATCHLINE - SHEET 2



MATCHLINE - SHEET 4

ENGINEER'S CERTIFICATE

I HEREBY CERTIFY, TO THE BEST OF MY PROFESSIONAL KNOWLEDGE, INFORMATION AND BELIEF, THAT THE PLAN SHOWS HEREON CONFORMS WITH THE MONTGOMERY COUNTY SUBDIVISION REGULATIONS AS ADOPTED OCTOBER 1961 AND AS AMENDED THEREAFTER.

SIGNATURE: BRANDON J. FRITZ, P.E. DATE: _____
 PRINTED NAME: BRANDON J. FRITZ, P.E. TITLE: PROJECT MANAGER
 MD. REG. NO. 26286



PROFESSIONAL CERTIFICATION
 I HEREBY CERTIFY THAT THESE DOCUMENTS WERE PREPARED OR APPROVED BY ME, AND THAT I AM A DULY LICENSED PROFESSIONAL ENGINEER UNDER THE LAWS OF THE STATE OF MARYLAND.
 LICENSE NO. 26286 EXPIRATION DATE: 06/21/21



LOT & PARCEL PLAN

**PRELIMINARY PLAN
 WILGUS TRACT
 # 120200140**

POTOMAC (1ST) ELECTION DISTRICT, MONTGOMERY COUNTY, MARYLAND

SOLTESZ, INC.
 Engineering
 Surveying
 Planning
 Environmental Sciences

Rockville Office
 2 Research Place, Suite 100
 Rockville, MD 20850
 P. 301.948.2750 F. 301.948.9067

Rockville
 Lanham
 Waldorf
 Leonardtown
 Frederick
 Soltesz DC, LLC

www.solteszco.com

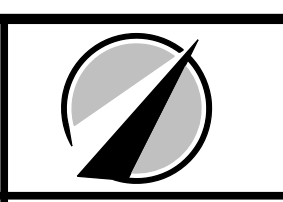
NO.	DATE	DESIGNED	TECHNICIAN	REVISIONS	BY	DATE
1	JANUARY 2020	KDL	NC			

NO. _____ DATE _____
 DESIGNED: KDL CHECKED: BJF

MISS UTILITY NOTE
 INFORMATION CONCERNING EXISTING UNDERGROUND UTILITIES WAS OBTAINED FROM AVAILABLE RECORDS. THE CONTRACTOR MUST DETERMINE THE EXACT LOCATION AND ELEVATION OF ALL EXISTING UTILITIES AND UTILITIES OR SERVICES BY ENGINEERING TESTS BY HAND, WELL IN ADVANCE OF THE START OF EXCAVATION. CONTACT "MISS UTILITY" AT 1-800-261-7777. 48 HOURS PRIOR TO THE START OF EXCAVATION, IF CLEARANCES ARE LESS THAN SHOWN ON THE PLAN OR TWELVE (12) INCHES, WHICHEVER IS LESS, CONTACT THE ENGINEER AND THE UTILITY COMPANY BEFORE PROCEEDING WITH CONSTRUCTION. CLEARANCES LESS THAN NOTED MAY REQUIRE REVISIONS TO THIS PLAN.

OWNER/DEVELOPER/APPLICANT
 WILGUS-MONTROSE ASSOCIATES LLC
 7811 MONTROSE ROAD
 SUITE 200
 POTOMAC, MD 20854
 PHONE: (240) 399-1500
 ROCKING@WILLCO.COM
 RICHARD COHEN

MAP: ADC	GRID: 5285
TAX MAP: G062	
WBCS 200 SHEET: 215 NW 06	
SITE DATUM: HORIZONTAL: NAD83	
VERTICAL: NAD83	



SHEET	3
OF	5
PROJECT NO.	12020-02-01