

PLANNING DEPARTMENT USE ONLY (E-PLANS)

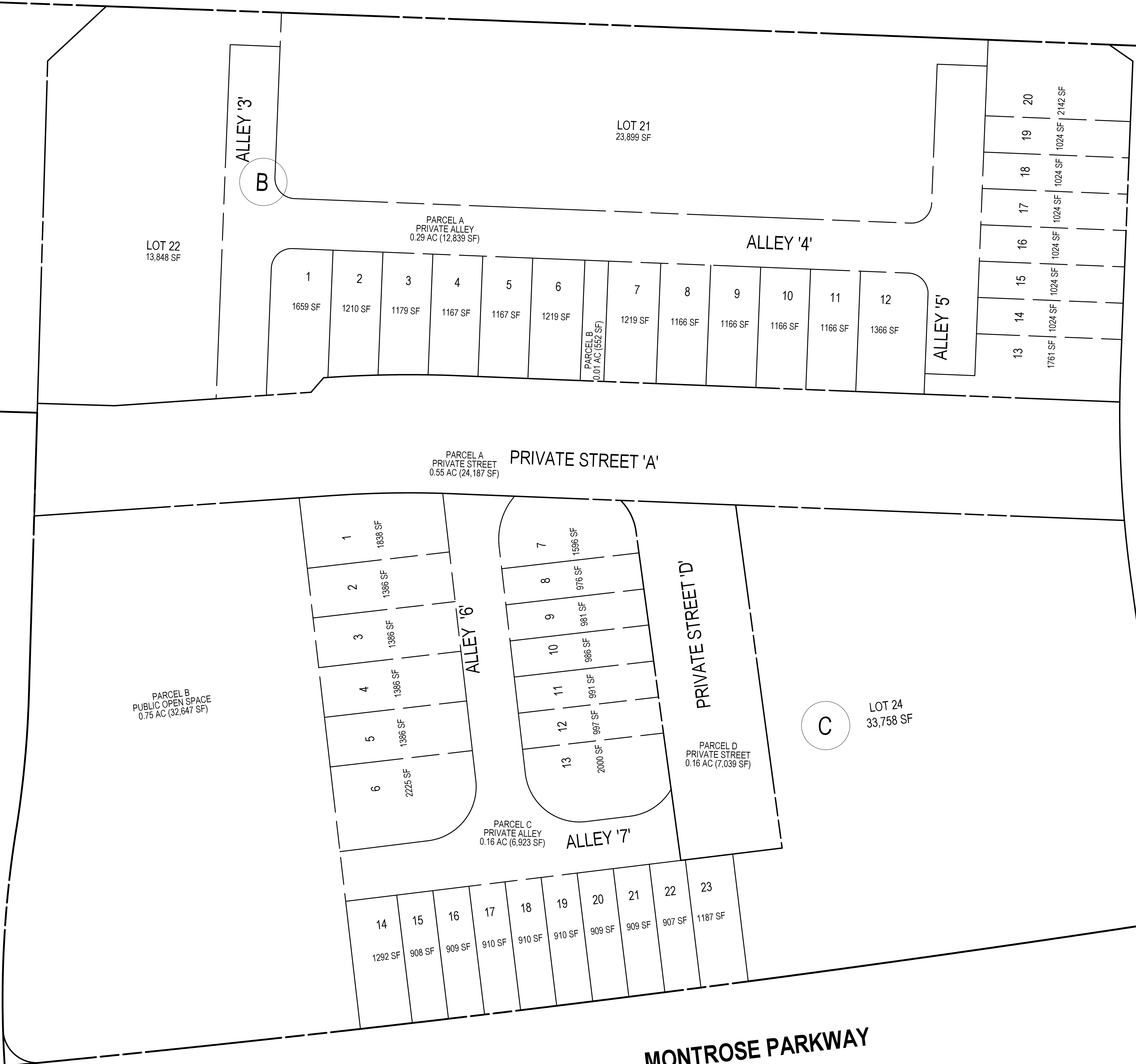
MATCHLINE - SHEET 3

STONEHENGE PLACE EXT. (PUBLIC)
70' R.O.W

MONTROSE ROAD

PUBLIC STREET 'C'

MATCHLINE - SHEET 5



ENGINEER'S CERTIFICATE

I HEREBY CERTIFY, TO THE BEST OF MY PROFESSIONAL KNOWLEDGE, INFORMATION AND BELIEF, THAT THE PLAN SHOWN HEREON CONFORMS WITH THE MONTGOMERY COUNTY SUBDIVISION REGULATIONS AS ADOPTED OCTOBER 1961 AND AS AMENDED THEREAFTER.

SIGNATURE: BRANDON J. FRITZ, P.E. DATE: _____
 PRINTED NAME: BRANDON J. FRITZ, P.E. TITLE: PROJECT MANAGER
 MD. REG. NO. 26286

PROFESSIONAL CERTIFICATION
 I HEREBY CERTIFY THAT THESE DOCUMENTS WERE PREPARED OR APPROVED BY ME, AND THAT I AM A DULY LICENSED PROFESSIONAL ENGINEER UNDER THE LAWS OF THE STATE OF MARYLAND.
 LICENSE NO. 26286 EXPIRATION DATE: 06/21/21

LOT & PARCEL PLAN

PRELIMINARY PLAN
WILGUS TRACT
 # 120200140

POTOMAC (1ST) ELECTION DISTRICT, MONTGOMERY COUNTY, MARYLAND

SOLTESZ, INC.
 Rockville Office
 2 Research Place, Suite 100
 Rockville, MD 20850
 P. 301.948.2750 F. 301.948.9067
 www.soltesz.com

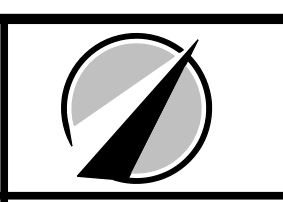
Rockville
 Lanham
 Waldorf
 Leonardtown
 Frederick
 Soltesz DC, LLC

NO.	DATE	REVISIONS	BY	DATE
DESIGNED:	JANUARY 2020	CAO STANDARDS VERSION:	V8 - NCS	
TECHNICIAN:	KDL	TECHNICIAN:	NC	
CHECKED:		CHECKED:	BJF	

MISS UTILITY NOTE
 INFORMATION CONCERNING EXISTING UNDERGROUND UTILITIES WAS OBTAINED FROM AVAILABLE RECORDS. THE CONTRACTOR MUST DETERMINE THE EXACT LOCATION AND ELEVATION OF ALL EXISTING UTILITIES AND UTILITY ORIGINATOR'S BY ENGINEER TEST FITS BY HAND, WELL IN ADVANCE OF THE START OF EXCAVATION. CONTACT "MISS UTILITY" AT 1-800-261-7777, 48 HOURS PRIOR TO THE START OF EXCAVATION. IF CLEARANCES ARE LESS THAN SHOWN ON THE PLAN OR TWELVE (12) INCHES, WHOEVER IS LESS, CONTACT THE ENGINEER AND THE UTILITY COMPANY BEFORE PROCEEDING WITH CONSTRUCTION. CLEARANCES LESS THAN NOTED MAY REQUIRE REVISIONS TO THIS PLAN.

OWNER/DEVELOPER/APPLICANT
 WILGUS/MONTROSE ASSOCIATES LLC
 7811 MONTROSE ROAD
 SUITE 200
 POTOMAC, MD 20854
 PHONE: (301) 399-1500
 ROCKING@WILLCO.COM
 RICHARD COHEN

MAP	ADC	GRID	5285
TAX MAP	GC02	ZONING CATEGORY:	CR-20, CR-10, RA-10, PD-20, CR-10A, CR-10B, CR-10C, CR-10D, CR-10E, CR-10F, CR-10G, CR-10H, CR-10I, CR-10J, CR-10K, CR-10L, CR-10M, CR-10N, CR-10O, CR-10P, CR-10Q, CR-10R, CR-10S, CR-10T, CR-10U, CR-10V, CR-10W, CR-10X, CR-10Y, CR-10Z
WISC 200	SHEET		
	215 NW 06		
SITE DATUM:			
HORIZONTAL:	NAD83		
VERTICAL:	NAD83		



SHEET	4
OF	5
PROJECT NO.	120200140
DATE	12/25/20