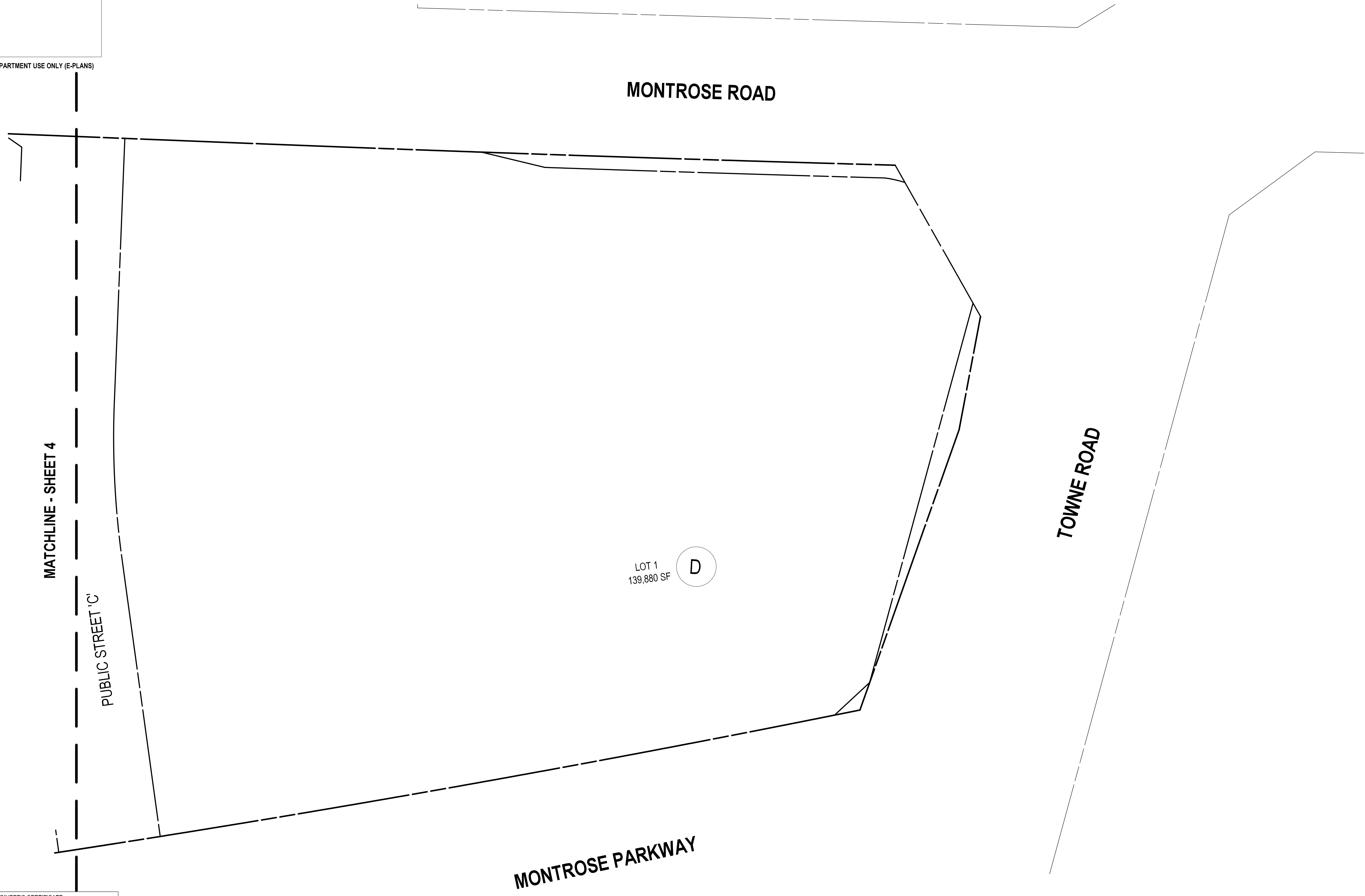


The original of this drawing document was prepared by Soltesz, Inc. (SOLTESZ). This document was not obtained directly from SOLTESZ, and/or it was transmitted electronically. SOLTESZ cannot guarantee that unauthorized changes and/or alterations were not made by others. If verification of the information contained herein is needed, contact should be made directly with SOLTESZ. SOLTESZ makes no warranties, express or implied, concerning the accuracy of any information that has been transmitted by electronic means.

PLANNING DEPARTMENT USE ONLY (E-PLANS)



LOT 1  
139,880 SF

D



**ENGINEER'S CERTIFICATE**

I HEREBY CERTIFY, TO THE BEST OF MY PROFESSIONAL KNOWLEDGE, INFORMATION AND BELIEF, THAT THE PLAN SHOWN HEREON CONFORMS WITH THE MONTGOMERY COUNTY SUBDIVISION REGULATIONS AS ADOPTED OCTOBER 1961 AND AS AMENDED THEREAFTER.

SIGNATURE: \_\_\_\_\_ DATE: \_\_\_\_\_  
 PRINTED NAME: BRANDON J. FRITZ, P.E. TITLE: PROJECT MANAGER  
 MD. REG. NO. 26286

**PROFESSIONAL CERTIFICATION**  
 I HEREBY CERTIFY THAT THESE DOCUMENTS WERE PREPARED OR APPROVED BY ME, AND THAT I AM A DULY LICENSED PROFESSIONAL ENGINEER UNDER THE LAWS OF THE STATE OF MARYLAND.  
 LICENSE NO. 26286 EXPIRATION DATE: 06/21/21



**SOLTESZ, INC.**  
 Engineering  
 Surveying  
 Planning  
 Environmental Sciences

Rockville Office  
 2 Research Place, Suite 100  
 Rockville, MD 20850  
 P. 301.948.2750 F. 301.948.9067

Rockville  
 Lanham  
 Waldorf  
 Leonardtown  
 Frederick  
 Soltesz DC, LLC  
 www.solteszco.com

NO.	DATE	DESIGNED	BY	DATE	REVISIONS

DATE: JANUARY 2020 CAO STANDARDS VERSION: V8 - RCS  
 DESIGNED: KDL TECHNICIAN: NC CHECKED: BJF

**MISS UTILITY NOTE**  
 INFORMATION CONCERNING EXISTING UNDERGROUND UTILITIES WAS OBTAINED FROM AVAILABLE RECORDS. THE CONTRACTOR MUST DETERMINE THE EXACT LOCATION AND ELEVATION OF ALL EXISTING UTILITIES AND UTILITY ORIGINIS BY DIGGING TEST PITS BY HAND, WELL IN ADVANCE OF THE START OF EXCAVATION. CONTACT "MISS UTILITY" AT 1-800-261-7777. 48 HOURS PRIOR TO THE START OF EXCAVATION. IF CLEARANCES ARE LESS THAN SHOWN ON THIS PLAN OR TWELVE (12) INCHES, WHOEVER IS LESS, CONTACT THE ENGINEER AND THE UTILITY COMPANY BEFORE PROCEEDING WITH CONSTRUCTION. CLEARANCES LESS THAN NOTED MAY REQUIRE REVISIONS TO THIS PLAN.

**OWNER/DEVELOPER/APPLICANT**  
 WILGUS-MONTROSE ASSOCIATES LLC  
 7811 MONTROSE ROAD  
 SUITE 200  
 POTOMAC, MD 20854  
 PHONE: (240) 399-1500  
 ROCKEN@WILLCO.COM  
 RICHARD COHEN

MAP: ADC	GRID: 5285
TAX MAP: G062	ZONING CATEGORY: CR-2 (C-1, R-1, R-2, R-3, R-4, R-5, R-6, R-7, R-8, R-9)
WISC 200 SHEET: 215 NW 06	SITE DATUM: HORIZONTAL: NAD83 VERTICAL: NAD83

**LOT & PARCEL PLAN**

**PRELIMINARY PLAN  
 WILGUS TRACT  
 # 120200140**

POTOMAC (1ST) ELECTION DISTRICT, MONTGOMERY COUNTY, MARYLAND

PROJECT NO. 1326-02-01

SHEET 5 OF 5