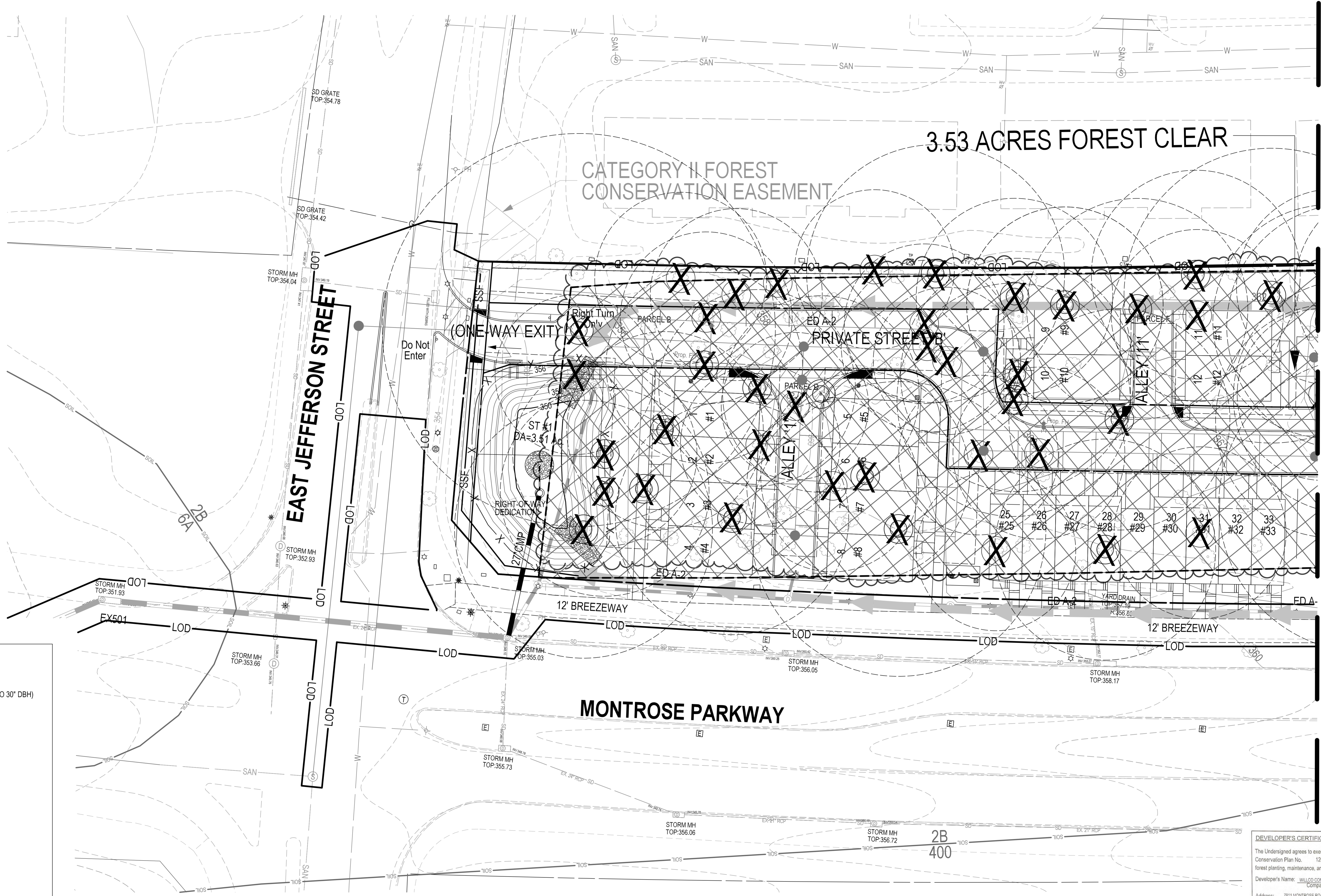


PLANNING DEPARTMENT USE ONLY (E-PLANS)

SCALE: 1" = 20'



MATCHLINE SHEET 3

**LEGEND:**

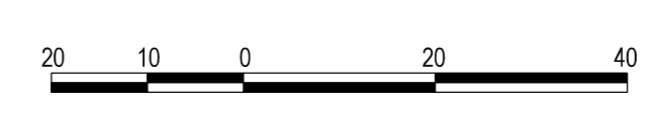
- SPECIMEN TREE (GREATER THAN OR EQUAL TO 30" DBH)
- SIGNIFICANT TREE (BETWEEN 24-29.9" DBH)
- TREE TO BE REMOVED
- LIMITS OF DISTURBANCE
- PROPOSED CONTOUR
- EXISTING SOIL LINE
- EXISTING FOREST LINE
- FOREST STAND DELINEATION
- FOREST TO BE REMOVED
- WETLAND
- WETLAND BUFFER

**DEVELOPER'S CERTIFICATE**

The Undersigned agrees to execute all the features of the Approved Final Forest Conservation Plan No. 120200140, including financial bonding, forest planning, maintenance, and all other applicable agreements.

Developer's Name: WILCO CONSTRUCTION CO., INC. RICHARD COHEN  
 Company Contact Person

Address: 7811 MONTROSE ROAD, POTOMAC, MD 20854  
 Phone: 240.368.1500  
 Signature: *[Signature]*



**SOLTESZ, INC.**  
 Rockville Office  
 2 Research Place, Suite 100  
 Rockville, MD 20850  
 P. 301.948.2750 F. 301.948.9067  
 www.soltesz.com

NO.	DATE	DESIGNED	BY	DATE
1	MARCH 2021	KDL	JCW	10/19/2020

PRELIMINARY PLAN RESOLUTION APPROVED  
 REVISIONS: NONE  
 CHECKED: DHP

**MISS UTILITY NOTE**

INFORMATION CONCERNING EXISTING UNDERGROUND UTILITIES WAS OBTAINED FROM AVAILABLE RECORDS. THE CONTRACTOR MUST DETERMINE THE EXACT LOCATION AND ELEVATION OF ALL EXISTING UTILITIES AND UTILITIES OR SERVICES BY ENGINEERING TEST FITS BY HAND, WELL IN ADVANCE OF THE START OF EXCAVATION. CONTACT MISS UTILITY AT 1-800-261-7777 48 HOURS PRIOR TO THE START OF EXCAVATION. IF CLEARANCES ARE LESS THAN SHOWN ON THE PLAN OR TWELVE (12) INCHES, WHEREVER LESS, CONTACT THE ENGINEER AND THE UTILITY COMPANY BEFORE PROCEEDING WITH CONSTRUCTION. CLEARANCES LESS THAN NOTED MAY REQUIRE REVISIONS TO THIS PLAN.

**OWNER/DEVELOPER/APPLICANT**

WILGUS/MONTROSE ASSOCIATES, LLC  
 7811 MONTROSE ROAD  
 SUITE 200  
 POTOMAC, MD 20854  
 PHONE: (240) 368-1500  
 ROCKEN@WILCO.COM  
 RICHARD COHEN

MAP	ADC	GRID	5285
TAX MAP	GC02	ZONING CATEGORY:	CR-30 (C-10, R-10, R-20, R-30, R-40, R-50, R-60, R-70, R-80, R-90, R-100)
WISC 200 SHEET	215 NW 06	DATE:	2021.03.23
SITE DATUM:	HORIZONTAL: NAD83	VERTICAL:	NAD83

Daniel H. Park  
 Daniel H. Park  
 182753-04'00"

**PRELIMINARY FCP**

**PRELIMINARY FOREST CONSERVATION PLAN**

**WILGUS TRACT**

**# 120200140**

ROCKVILLE (4TH) ELECTION DISTRICT, MONTGOMERY COUNTY, MARYLAND

SHEET **12**  
 OF **17**  
 PROJECT NO.  
 1205-02-01

The original of this drawing document was prepared by Soltesz, Inc. (SOLTESZ). This document was not obtained directly from SOLTESZ, Inc. (SOLTESZ). SOLTESZ cannot guarantee that unauthorized changes and/or alterations were not made by others. If verification of the information contained herein is needed, contact should be made directly with SOLTESZ. SOLTESZ makes no warranties, express or implied, concerning the accuracy of any information that has been transmitted by electronic means.