

PLANNING DEPARTMENT USE ONLY (E-PLANS)

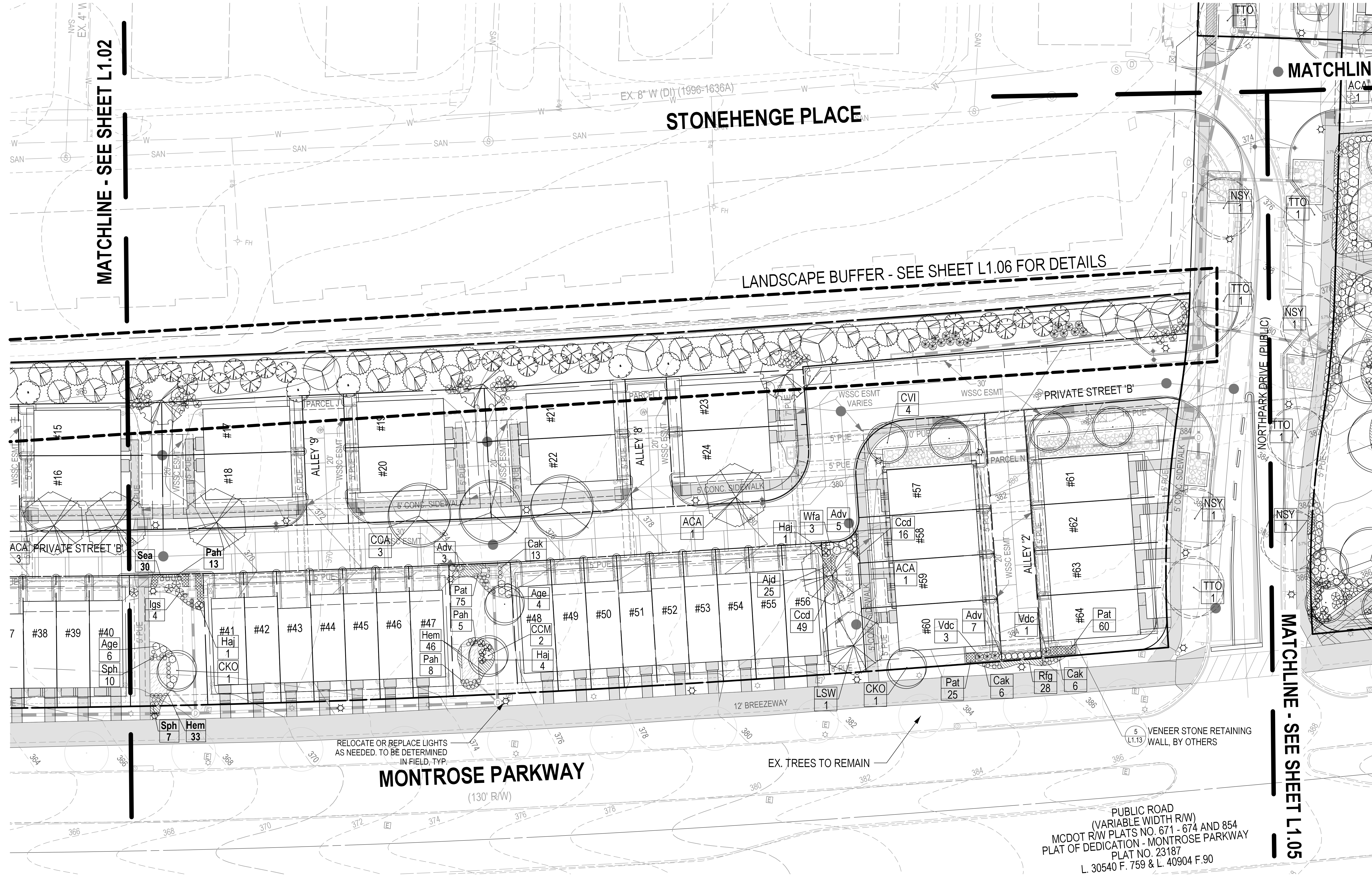
SCALE: 1" = 20'

MATCHLINE - SEE SHEET L1.02

MATCHLINE - SEE SHEET L1.04

STONEHENGE PLACE

LANDSCAPE BUFFER - SEE SHEET L1.06 FOR DETAILS



LEGEND:

- PROPOSED RIGHT-OF-WAY
- PROPOSED BUILDING
- EXISTING CONTOUR
- PROPOSED CONTOUR
- PROPOSED STORM DRAIN
- PROPOSED TREES
- PROPOSED LIGHTING

MATCHLINE - SEE SHEET L1.05

MONTROSE PARKWAY
(130' R/W)

PUBLIC ROAD
(VARIABLE WIDTH R/W)
MCDOT RW PLATS NO. 671 - 674 AND 854
PLAT OF DEDICATION - MONTROSE PARKWAY
PLAT NO. 23187
L. 30540 F. 759 & L. 40904 F. 90

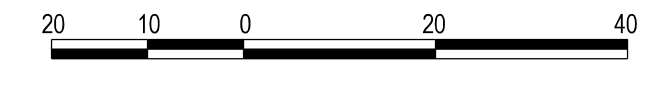
RELOCATE OR REPLACE LIGHTS
AS NEEDED, TO BE DETERMINED
IN FIELD, TYP.

EX. TREES TO REMAIN

VENEER STONE RETAINING
WALL, BY OTHERS

NOTE:
STORMWATER FACILITIES WILL BE PLANTED PER MCDPS REQUIREMENTS

DEVELOPER'S CERTIFICATE
The Undersigned agrees to execute all the features of the Plan Approval No. 820210080 including Approval Conditions, Development Program, and Landscape and Lighting Plan.
Developer's Name: WILGUS-MONTROSE ASSOCIATES LLC
Address: 7811 MONTROSE ROAD, SUITE 200, POTOMAC, MD 20854
Phone: (240) 399-1500
Signature: RICHARD COHEN, Contract Person



SOLTESZ, INC.
Rockville Office
2 Research Place, Suite 100
Rockville, MD 20850
P. 301.948.2750 F. 301.948.9067

NO.	DATE	DESIGNED	BY	DATE
1	DECEMBER 2020	SAC		

MISS UTILITY NOTE
INFORMATION CONCERNING EXISTING UNDERGROUND UTILITIES WAS OBTAINED FROM AVAILABLE RECORDS. THE CONTRACTOR MUST DETERMINE THE EXACT LOCATION AND ELEVATION OF ALL EXISTING UTILITIES AND UTILITY CROSSINGS BY ENGINEERING TEST PITS BY HAND, WELL IN ADVANCE OF THE START OF EXCAVATION. CONTACT "MISS UTILITY" AT 1-800-261-7777 48 HOURS PRIOR TO THE START OF EXCAVATION. IF CLEARANCES ARE LESS THAN SHOWN ON THE PLAN OR TWELVE (12) INCHES, WHOEVER IS LESS, CONTACT THE ENGINEER AND THE UTILITY COMPANY BEFORE PROCEEDING WITH CONSTRUCTION. CLEARANCES LESS THAN NOTED MAY REQUIRE REVISIONS TO THIS PLAN.

OWNER/DEVELOPER/APPLICANT
WILGUS-MONTROSE ASSOCIATES LLC
7811 MONTROSE ROAD
SUITE 200
POTOMAC, MD 20854
PHONE: (240) 399-1500
RICHARD@WILLCO.COM
RICHARD COHEN

MAP	ADC	GRID	5285
TAX MAP	G0562	PLANNING CATEGORY:	CR-20, CR-10, CR-15, CR-20, CR-25, CR-30, CR-35, CR-40, CR-45, CR-50, CR-55, CR-60, CR-65, CR-70, CR-75, CR-80, CR-85, CR-90, CR-95, CR-100
WSSC 200' SHEET	215 NW 06	SITE DATUM:	HORIZONTAL: NAD83 VERTICAL: NAD83



LANDSCAPE PLAN - 20 SCALE

LANDSCAPE AND LIGHTING PLAN 820210080
NORTH PARK AT MONTROSE
(FORMERLY WILGUS TRACT)

ROCKVILLE (4TH) ELECTION DISTRICT, MONTGOMERY COUNTY, MARYLAND

PROJECT NO. 1325-02-01

SHEET **L1.03**

The original of this drawing document was prepared by Soltesz, Inc. (SOLTESZ). This document was not obtained directly from SOLTESZ, Inc. (SOLTESZ). If you are not the original owner of this document, you are not authorized to reproduce or distribute it. SOLTESZ, Inc. (SOLTESZ) cannot guarantee that unauthorized changes and/or alterations were not made by others. If verification of the information contained herein is needed, contact should be made directly with SOLTESZ, Inc. (SOLTESZ) makes no warranties, express or implied, concerning the accuracy of any information that has been transmitted by electronic means.