

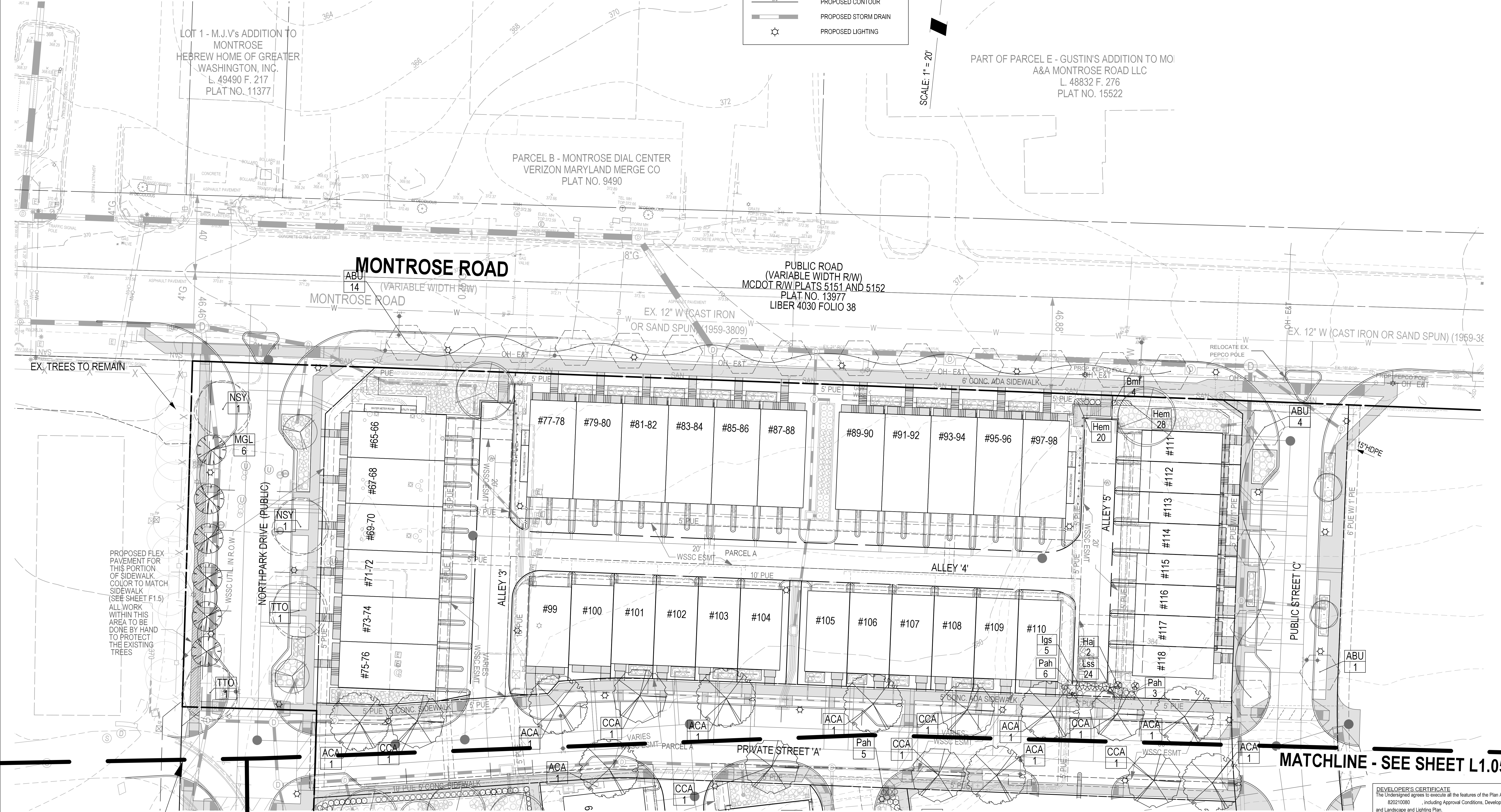
The original of this drawing document was prepared by Soltesz, Inc. (SOLTESZ). This document was not obtained electronically. SOLTESZ cannot guarantee that unauthorized changes and/or alterations were not made by others. If verification of the information contained herein is needed, contact should be made directly with SOLTESZ. SOLTESZ makes no warranties, express or implied, concerning the accuracy of any information that has been transmitted by electronic means.

PLANNING DEPARTMENT USE ONLY (E-PLANS)

**LEGEND:**

- PROPOSED RIGHT-OF-WAY
- PROPOSED BUILDING
- EXISTING CONTOUR
- PROPOSED CONTOUR
- PROPOSED STORM DRAIN
- PROPOSED LIGHTING

SCALE: 1" = 20'



MATCHLINE - SEE SHEET L1.03

MATCHLINE - SEE SHEET L1.05

NOTE:  
STORMWATER FACILITIES WILL BE PLANTED PER MCDPS REQUIREMENTS.  
SEE SHEET L1.15 FOR OVERALL LANDSCAPE SCHEDULE.

**DEVELOPER'S CERTIFICATE**  
The undersigned agrees to execute all the features of the Plan Approval No. 820210080 including Approval Conditions, Development Program, and Landscape and Lighting Plan.  
Developer's Name: WILGUS-MONTROSE ASSOCIATES LLC  
Richard Cohen  
Address: 7811 MONTROSE ROAD, SUITE 200, POTOMAC, MD 20854  
Phone: (240) 399-1500  
Signature: \_\_\_\_\_

**SOLTESZ, INC.**  
Rockville  
Lanham  
Waldorf  
Leonardtown  
Frederick  
Soltesz DC, LLC

ROCKVILLE OFFICE  
2 Research Place, Suite 100  
Rockville, MD 20850  
P. 301.948.2750 F. 301.948.9067  
www.soltesz.com

NO.	DATE	CAO STANDARDS VERSION	REVISIONS	BY	DATE
DESIGNED:	DECEMBER 2020	SAC	18 - NCS		
TECHNICIAN:		JCW			
CHECKED:		KDL			

**MISS UTILITY NOTE**  
INFORMATION CONCERNING EXISTING UNDERGROUND UTILITIES WAS OBTAINED FROM AVAILABLE RECORDS. THE CONTRACTOR MUST DETERMINE THE EXACT LOCATION AND ELEVATION OF ALL EXISTING UTILITIES AND UTILITIES OR SERVICES BY ENGINEERING TEST FITS BY HAND, WELL IN ADVANCE OF THE START OF EXCAVATION. CONTACT "MISS UTILITY" AT 1-800-261-7777. 48 HOURS PRIOR TO THE START OF EXCAVATION, IF CLEARANCES ARE LESS THAN SHOWN ON THIS PLAN OR TWELVE (12) INCHES, WHICHEVER IS LESS, CONTACT THE ENGINEER AND THE UTILITY COMPANY BEFORE PROCEEDING WITH CONSTRUCTION. CLEARANCES LESS THAN NOTED MAY REQUIRE REVISIONS TO THIS PLAN.

**OWNER/DEVELOPER/APPLICANT**  
WILGUS-MONTROSE ASSOCIATES LLC  
7811 MONTROSE ROAD  
SUITE 200  
POTOMAC, MD 20854  
PHONE: (240) 399-1500  
RCHEN@WILGUS.COM  
RICHARD COHEN

MAP	ADC	GRID	5285
TAX MAP	G0502	PLANNING CATEGORY:	CR-20, CR-1A, CR-1B, CR-20B, CR-20C, CR-20D, CR-20E, CR-20F, CR-20G, CR-20H, CR-20I, CR-20J, CR-20K, CR-20L, CR-20M, CR-20N, CR-20O, CR-20P, CR-20Q, CR-20R, CR-20S, CR-20T, CR-20U, CR-20V, CR-20W, CR-20X, CR-20Y, CR-20Z
WSSC 200 SHEET		SITE DATUM:	
215 NW 06		HORIZONTAL:	NAD83
		VERTICAL:	NAD83



**LANDSCAPE PLAN - 20 SCALE**

**LANDSCAPE AND LIGHTING PLAN 820210080**  
**NORTH PARK AT MONTROSE**  
**(FORMERLY WILGUS TRACT)**

ROCKVILLE (4TH) ELECTION DISTRICT, MONTGOMERY COUNTY, MARYLAND

SHEET **L1.04**

PROJECT NO. 1325-02-01