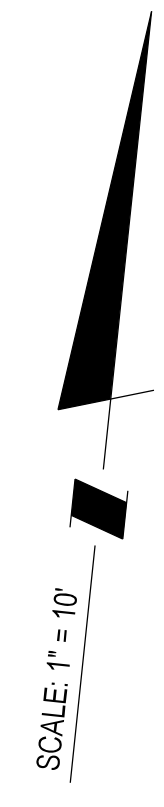
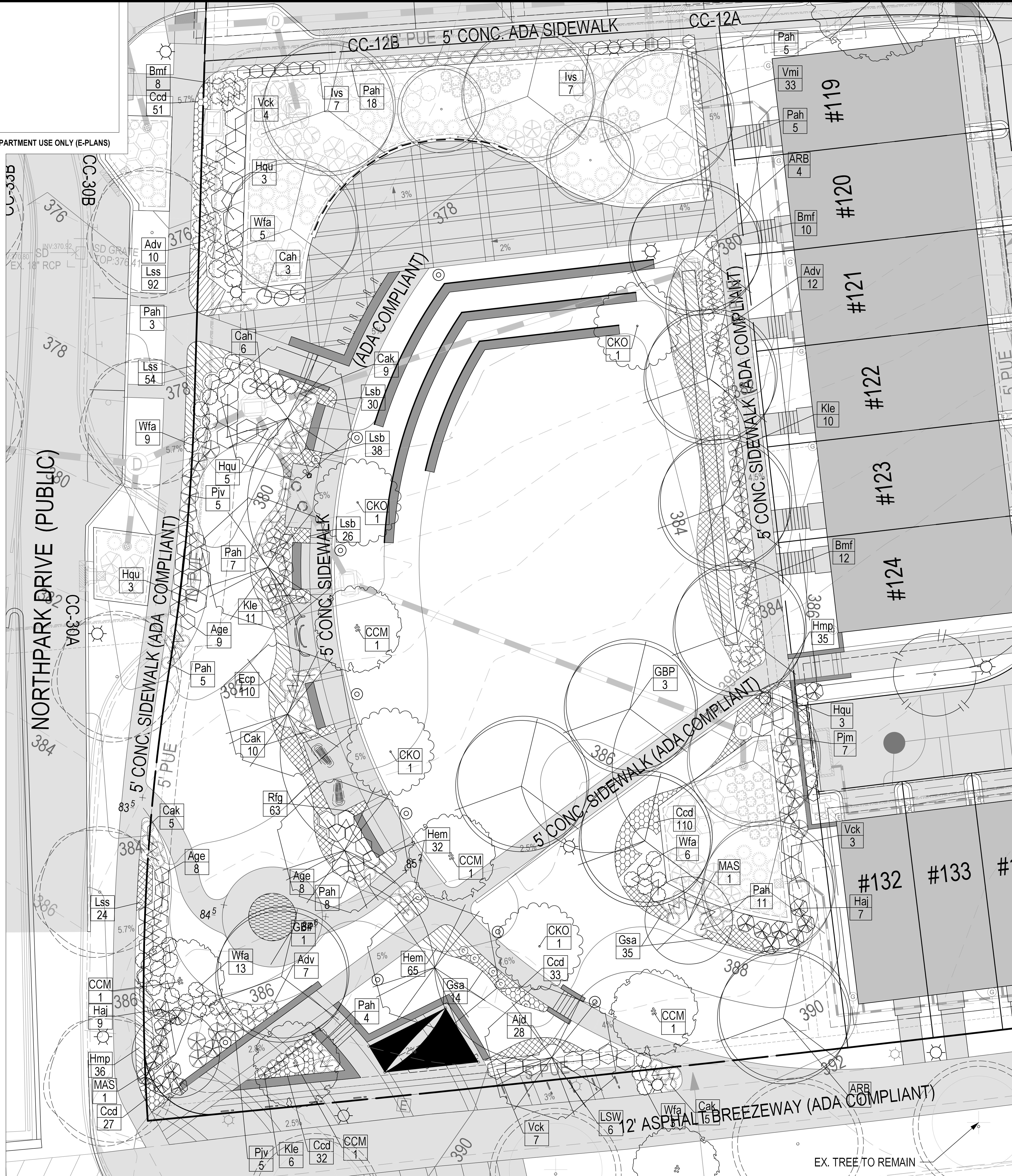
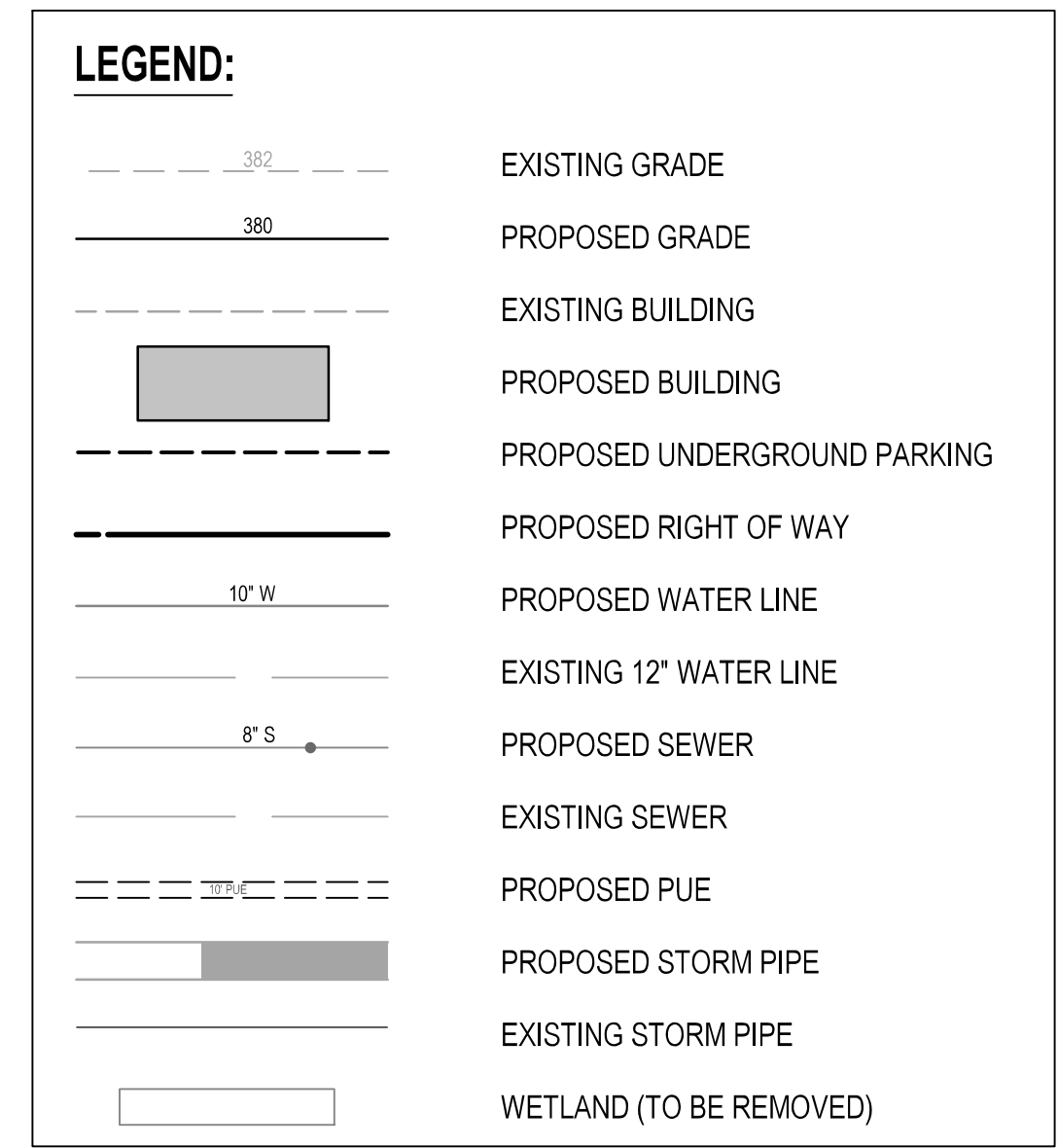


PLANNING DEPARTMENT USE ONLY (E-PLANS)



PLANT SCHEDULE FOR CENTRAL PARK								
SYM	QTY	KEY	BOTANICAL NAME	COMMON NAME	SPACING	SIZE (INITIAL)	TYPE	REMARK
<b>SHADE TREES</b>								
☉	5	ARB	<i>Acer rubrum</i> 'Brandywine'	Emerald City Tulip Tree	As Shown	3" Cal., 10' Ht.	B&B	Single-Stem, Full
☉	4	GBP	<i>Ginkgo biloba</i> 'Princeton Sentry'	Princeton Sentry Ginkgo	As Shown	3" Cal., 10' Ht.	B&B	Single-Stem, Full
☉	6	LSW	<i>Liquidambar styraciflua</i> 'Warplesdon'	Sweetgum	As Shown	3" Cal., 10' Ht.	B&B	Single-Stem, Full
<b>ORNAMENTAL TREES</b>								
☉	4	CKO	<i>Cornus kousa</i>	Kousa Dogwood	As Shown	2 1/2" Cal., 8' Ht.	B&B	Single-Stem, Full
☉	4	CCM	<i>Cercis canadensis</i> 'Merlot'	Merlot Eastern Redbud	As Shown	2 1/2" Cal., 8' Ht.	B&B	Single-Stem, Full
☉	2	MAS	<i>Magnolia x soulangeana</i>	Saucer Magnolia	As Shown	2 1/2" Cal., 8' Ht.	B&B	Multi-Stem, Full
<b>DECIDUOUS SHRUB</b>								
☉	24	Age	<i>Abelia x grandiflora</i> 'Edward Goucher'	Pink Abelia	36" O.C.	24" Ht.	#3 Cont.	Full-Sun
☉	9	Cah	<i>Clethra alnifolia</i> 'Hummingbird'	Summersweet	42" O.C.	30" Ht.	#3 Cont.	Full-Sun to Part-Shade
☉	16	Haj	<i>Hydrangea arborescens</i> 'Jane'	Little Lime Hydrangea	42" O.C.	30" Ht.	#4 Cont.	Full-Sun to Part-Shade
☉	14	Hqu	<i>Hydrangea quercifolia</i>	Oakleaf Hydrangea	5' O.C.	24" Ht.	#3 Cont.	Full-Sun to Part-Shade
☉	14	Ivs	<i>Itea virginica</i> 'Sprich'	Little Henry Sweetspire	36" O.C.	18" Ht.	#3 Cont.	Full-Sun to Part-Shade
☉	36	Wfa	<i>Weigela florida</i> 'Alexandra'	Wine and Roses Weigela	48" O.C.	24" Ht.	#3 Cont.	Full-Sun
<b>EVERGREEN SHRUB</b>								
☉	29	Adv	<i>Azalea</i> 'Delaware Valley White'	Delaware Valley Azalea	30" O.C.	24" Ht.	#3 Cont.	Part Shade
☉	30	Bmf	<i>Buxus microphylla</i> 'Faulkner'	Littleleaf Boxwood	30" O.C.	30" Ht.	#3 Cont.	Part-Sun to Full-Shade
☉	27	Kle	<i>Kalmia latifolia</i> 'Elf'	Dwarf Mountain Laurel	42" O.C.	18" Ht.	#2 Cont.	Part Shade
☉	7	Pjm	<i>Pieris japonica</i> 'Mountain Fire'	Mountain Fire Japanese Pieris	48" O.C.	36" Ht.	#3 Cont.	Full-Sun to Part-Shade
☉	10	Pjv	<i>Pieris japonica</i> 'Valley Rose'	Valley Rose Japanese Pieris	48" O.C.	36" Ht.	#3 Cont.	Full-Sun to Part-Shade
☉	14	Vck	<i>Viburnum carlesii</i>	Koreanspice Viburnum	5' O.C.	24" Ht.	#2 Cont.	Full-Sun to Part-Shade
<b>GRASSES AND PERENNIALS</b>								
☉	28	Ajd	<i>Astilbe japonica</i> 'Deutschland'	False Spirea Deutschland	18" O.C.	15" Ht.	1 Gal.	Part-Shade to Full-Shade
☉	29	Cak	<i>Calamagrostis x acutiflora</i> 'Karl Foerster'	Feather Reed Grass	24" O.C.	12" Ht.	2 Gal.	Full-Sun to Part-Shade
☉	110	Ecp	<i>Echinacea purpurea</i> 'Rubinstern'	Ruby Star Purple Coneflower	12" O.C.	12" Ht.	1 Gal.	Full-Sun
☉	97	Hem	<i>Hemerocallis</i> 'Stella D'Oro'	Stella D'Oro Daylily	12" O.C.	12" Ht.	Top Size Bulb	Full-Sun to Part-Shade
☉	71	Hmp	<i>Heuchera micrantha</i> var. <i>diversifolia</i> 'Palace Purple'	Palace Purple Coral Bells	18" O.C.	9" Ht.	1 Gal.	Full-Sun to Part-Shade
☉	94	Lsb	<i>Leucanthemum x superbum</i> 'Becky'	Becky Shasta Daisy	18" O.C.	12" Ht.	1 Gal.	Full-Sun
☉	170	Lss	<i>Leucanthemum x superbum</i> 'Silberprinzesschen'	Little Princess Shasta Daisy	12" O.C.	12" Ht.	1 Gal.	Full-Sun
☉	70	Pah	<i>Pennisetum alopecuroides</i> 'Hamelin'	Hamelin Dwarf Fountain Grass	24" O.C.	15" Ht.	2 Gal.	Full-Sun
☉	63	Rfg	<i>Rudbeckia fulgida</i> 'Goldstrum'	Goldstrum Black Eyed Susan	18" O.C.	15" Ht.	1 Gal.	Full-Sun
<b>PERENNIAL GROUNDCOVER</b>								
☉	253	Ccd	<i>Campanula carpatica</i> 'Deep Blue Chips'	Blue Bellflower	12" O.C.	6" Ht.	1 Qt.	Full-Sun to Part-Shade
☉	49	Gsa	<i>Geranium sanguineum</i> 'Album'	White Bloody Cranesbill	24" O.C.	4" Ht.	2.5 Qt.	Full-Sun to Part-Shade
☉	33	Vmi	<i>Vinca minor</i>	Periwinkle	12" O.C.	4" Ht.	1 Qt.	Full-Sun to Part-Shade



**NOTE:**  
STORMWATER FACILITIES WILL BE PLANTED PER MCDPS REQUIREMENTS

**DEVELOPER'S CERTIFICATE**  
The Undersigned agrees to execute all the features of the Plan Approval No. 820210080 including Approval Conditions, Development Program, and Landscape and Lighting Plan.  
WILGUS-MONTROSE ASSOCIATES LLC  
Developer's Name: WILGUS-MONTROSE ASSOCIATES LLC  
Address: 7811 MONTROSE ROAD, SUITE 200, POTOMAC, MD 20854  
Phone: (240) 399-1500  
Richard Cohen  
Contact Person

**SOLTESZ, INC.**  
Rockville Lanham Waldorf Leonardtown Frederick Soltesz DC, LLC  
ROCKVILLE OFFICE  
2 Research Place, Suite 100  
Rockville, MD 20850  
P. 301.948.2750 F. 301.948.9067  
www.soltesz.com

NO.	DATE	DESIGNED	CAO STANDARDS VERSION	REVISIONS	BY	DATE
1	DECEMBER 2020	SAC	V8 - NCS			

DESIGNED: SAC  
TECHNICAL: JCW  
CHECKED: KDL

**MISS UTILITY NOTE**  
INFORMATION CONCERNING EXISTING UNDERGROUND UTILITIES WAS OBTAINED FROM AVAILABLE RECORDS. THE CONTRACTOR MUST DETERMINE THE EXACT LOCATION AND ELEVATION OF ALL EXISTING UTILITIES AND UTILITY CROSSINGS BY EXCAVATION TEST PITS BY HAND, WELL IN ADVANCE OF THE START OF EXCAVATION. CONTACT "MISS UTILITY" AT 1-800-261-7777 48 HOURS PRIOR TO THE START OF EXCAVATION. IF CLEARANCES ARE LESS THAN SHOWN ON THE PLAN OR TWELVE (12) INCHES, WHOEVER IS LESS, CONTACT THE ENGINEER AND THE UTILITY COMPANY BEFORE PROCEEDING WITH CONSTRUCTION. CLEARANCES LESS THAN NOTED MAY REQUIRE REVISIONS TO THE PLAN.

**OWNER/DEVELOPER/APPLICANT**  
WILGUS-MONTROSE ASSOCIATES LLC  
7811 MONTROSE ROAD  
SUITE 200  
POTOMAC, MD 20854  
PHONE: (240) 399-1500  
ROCK@WILGUS.COM  
RICHARD COHEN

MAP	ADC	GRID	5285
TAX MAP	G0552	ZONING CATEGORY	CR-20 (C-10, N-10, PD-20, CR-20, C-20, R-10, R-20)
WBCS 200 SHEET	215 NW 06	SITE DATUM	
HORIZONTAL	NAD83	VERTICAL	NAD83

**CENTRAL PARK LANDSCAPE PLAN - 10 SCALE**

**LANDSCAPE AND LIGHTING PLAN 820210080**  
**NORTH PARK AT MONTROSE (FORMERLY WILGUS TRACT)**

ROCKVILLE (4TH) ELECTION DISTRICT, MONTGOMERY COUNTY, MARYLAND

PROJECT NO. 1325-02-01

SHEET **L1.10**