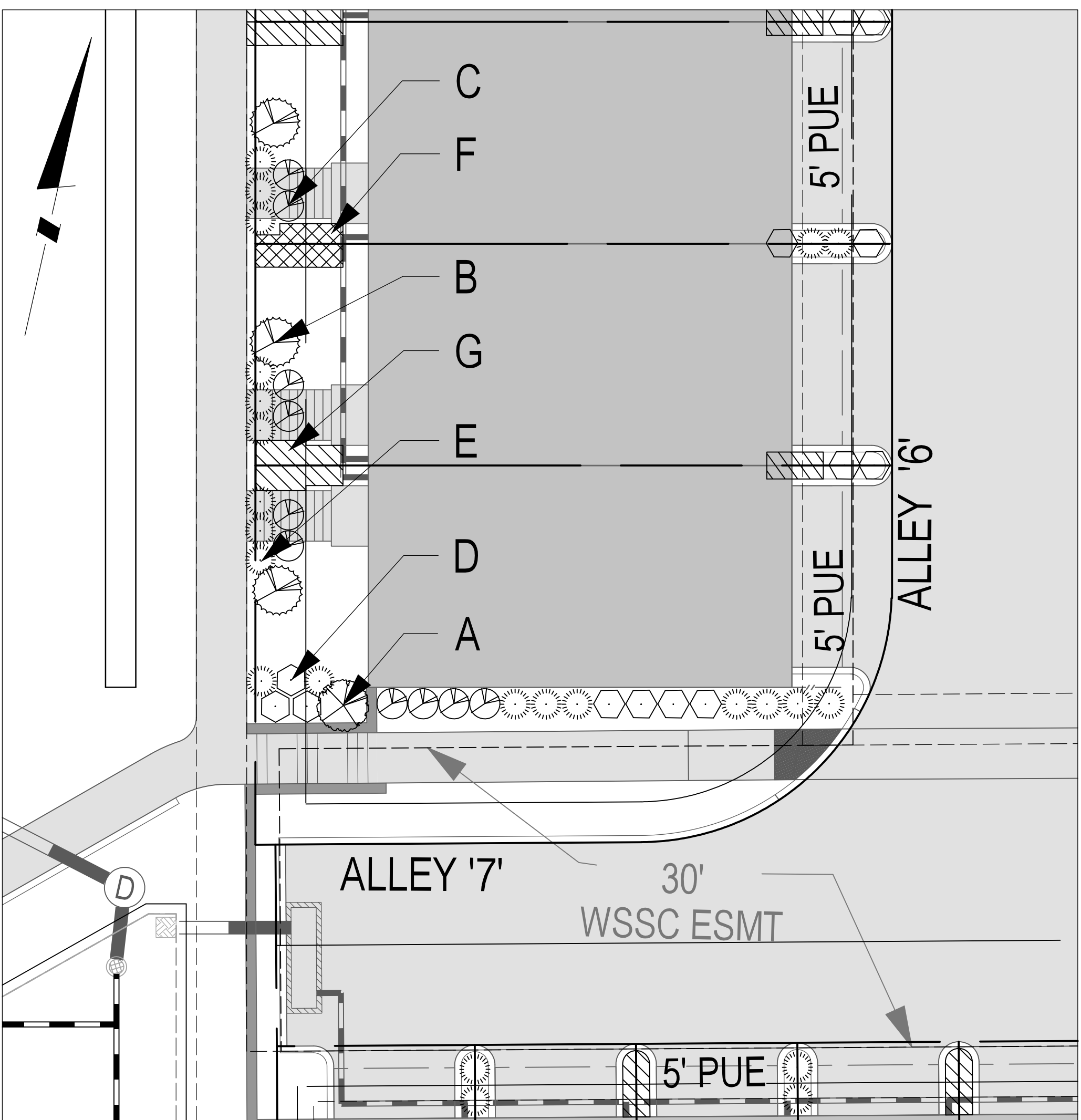
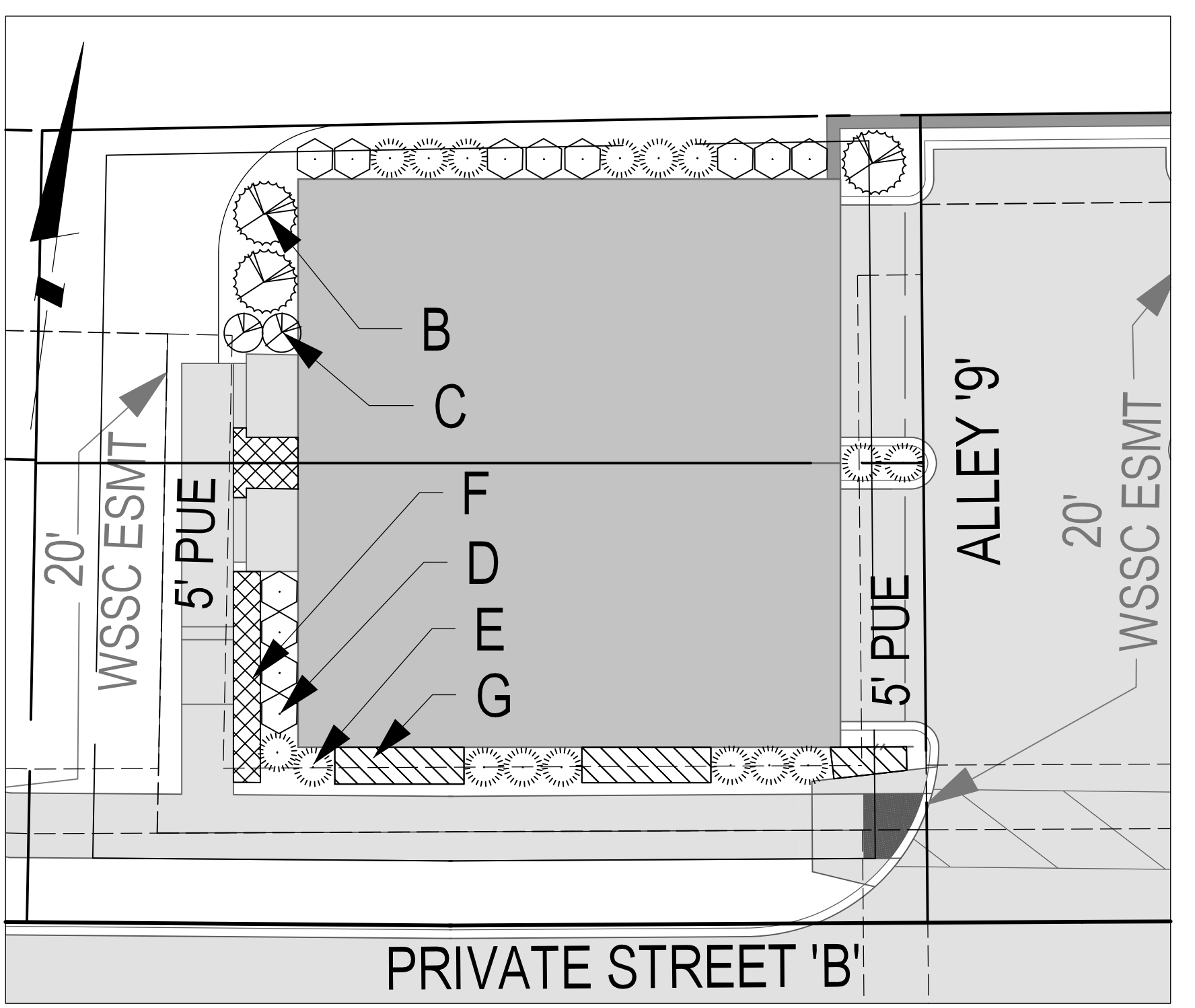


PLANNING DEPARTMENT USE ONLY (E-PLANS)

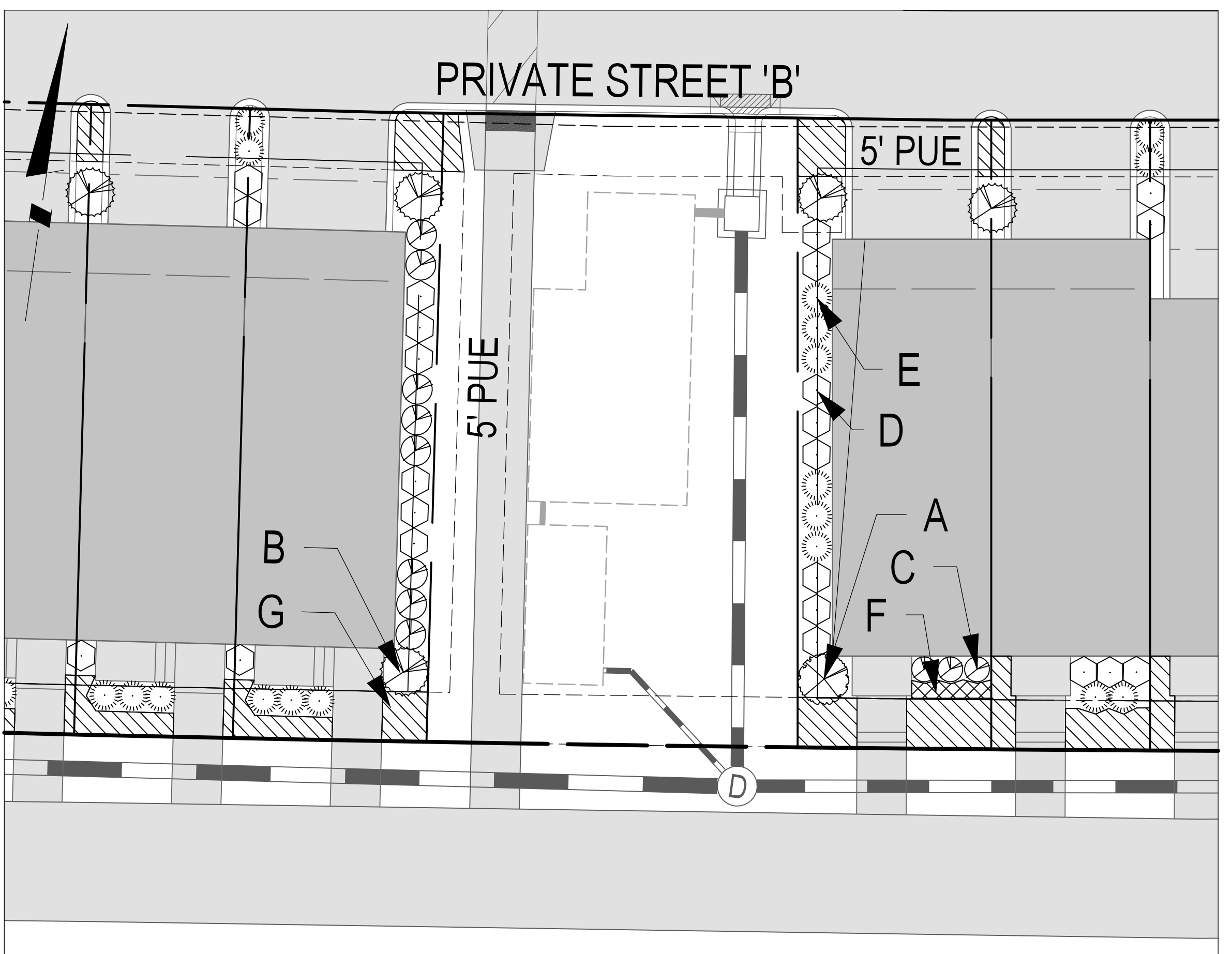


22' TOWNHOME UNITS IN STICKS
EXCLUDES 22' UNITS ON PRIVATE STREET B

INDIVIDUAL LOT PLANT SCHEDULE FOR TOWNHOMES					
KEY	BOTANICAL NAME	COMMON NAME	SIZE	TYPE	REMARK
A	<i>Hydrangea paniculata</i>	PeeGee Hydrangea	30"-36"	B&B/#6 cont.	Full-sun to Part-shade
	<i>Rhododendron catawbiense 'Grandiflorum'</i>	Grandiflorum Catawba Rhododendron	30"-36"	B&B/#6 cont.	Full-sun to Part-shade
	<i>Viburnum x burkwoodii 'Mohawk'</i>	Burkwood Viburnum	30"-36"	B&B/#6 cont.	Full-sun to Part-shade
	<i>Viburnum carlesii</i>	Korean Spice Viburnum	30"-36"	B&B/#6 cont.	Full-sun to Part-shade
B	<i>Ilex x 'Ruthhol1' P. P. #23,905</i>	Emerald Colonnade® Holly	30"-36"	B&B/#6 cont.	Full-sun
	<i>Photinia x fraseri</i>	Fraser's Photinia	30"-36"	B&B/#6 cont.	Full-sun
	<i>Prunus laurocerasus 'Schipkaensis'</i>	Schipka Cherry Laurel	30"-36"	B&B/#6 cont.	Part-sun to Part-shade
C	<i>Abelia x grandiflora 'Edward Goucher'</i>	Pink Abelia	24"-30"	B&B/#3 cont.	Full-sun
	<i>Forsythia 'Arnold Dwarf'</i>	Forsythia	24"-30"	B&B/#3 cont.	Full-sun to Part-shade
	<i>Itea virginica 'Sprich (Little Henry)'</i>	Virginia Sweetspire	24"-30"	B&B/#3 cont.	Full-sun to Part-shade
	<i>Spiraea nipponica 'snowmound'</i>	Japanese Spiraea	24"-30"	B&B/#3 cont.	Full-sun to Part-shade
D	<i>Ilex crenata 'Compacta'</i>	Compact Japanese Holly	24"-30"	B&B/#3 cont.	Full-sun
	<i>Ilex glabra 'Compacta'</i>	Compact Inkberry Holly	24"-30"	B&B/#3 cont.	Full-sun to Part-shade
E	<i>Picea glauca 'Conica'</i>	Dwarf Alberta Spruce	24"-30"	B&B/#3 cont.	Full-sun
	<i>Buxus microphylla 'Faulkner'</i>	Littleleaf Boxwood	24"-30"	B&B/#3 cont.	Part-sun to Full-shade
	<i>Echinacea purpurea</i>	Purple Coneflower	#2	cont.	Full-sun
	<i>Festuca glauca 'Elijah Blue'</i>	Elijah Blue Fescue	#2	cont.	Full-sun
F	<i>Hemerocallis 'Stella D'Oro'</i>	Stella D' Oro Daylily	#2	cont.	Full-sun to Part-shade
	<i>Calamagrostis x acutiflora 'Karl Foerster'</i>	Feather Reed Grass	#2	cont.	Full-sun to Part-shade
	<i>Pennisetum alopecuroides 'Little Bunny'</i>	Little Bunny Dwarf Fountain Grass	#2	cont.	Full-sun
	<i>Liriope muscari 'Variegata'</i>	Lilyturf	#2	cont.	Full-sun to Full-shade
	<i>Rudbeckia fulgida 'Goldstrum'</i>	Goldstrum Black Eyed Susan	#2	cont.	Full-sun
	G	<i>Juniperus horizontalis 'Blue Chip'</i>	Blue Chip Juniper	#1	cont.
<i>Juniperus conferta 'Blue Pacific'</i>		Blue Pacific Shore Juniper	#1	cont.	Full-sun
H	<i>Ajuga reptans 'Burgundy Glow'</i>	Carpet Bugle	#2	cont.	Part-sun to Full-shade
	<i>Hypericum calycinum</i>	St. John's Wort	#1	cont.	Full-sun to Part-shade
	<i>Pachysandra terminalis</i>	Pachysandra	#1	cont.	Full-sun to Part-shade

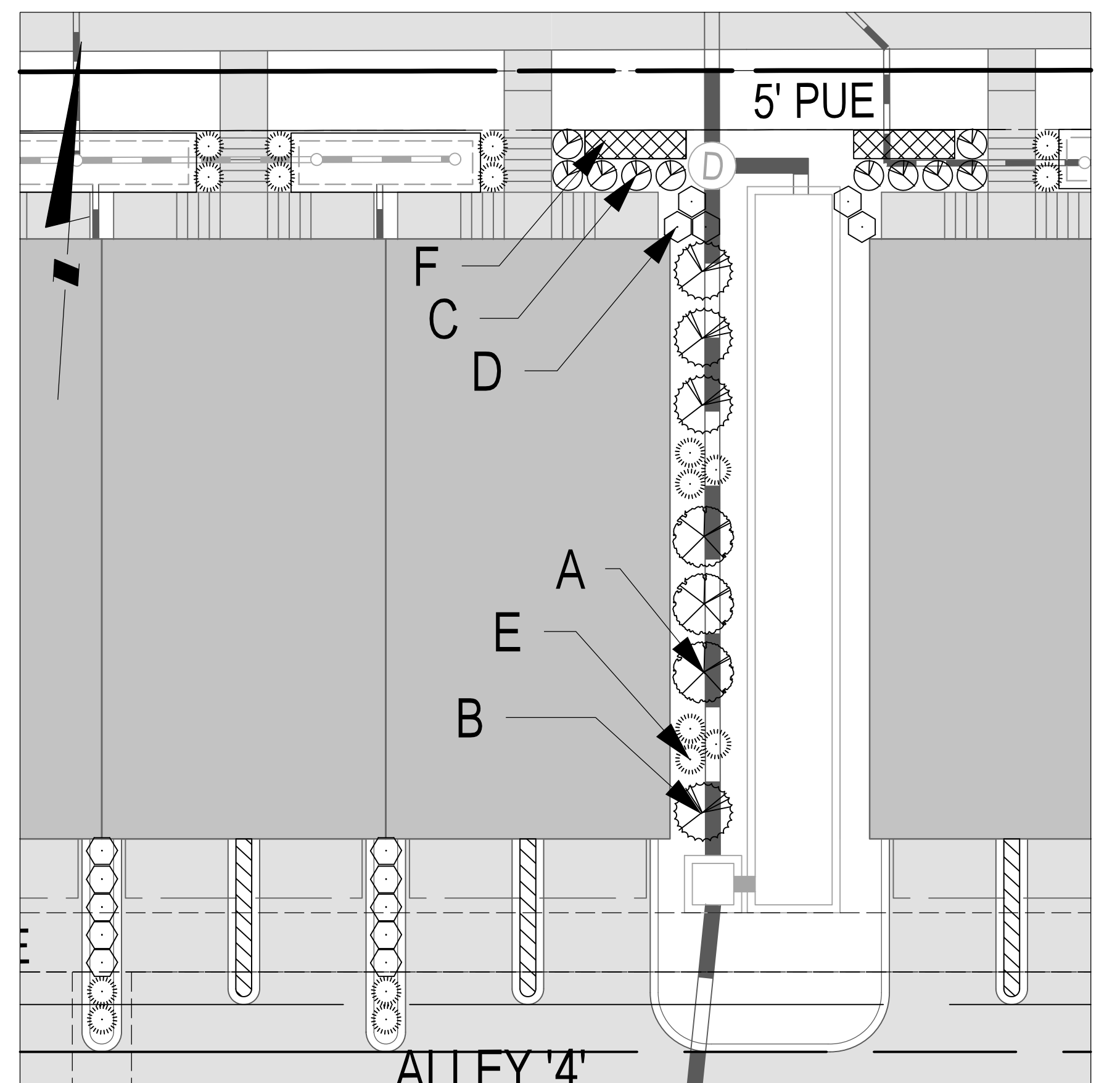


22' TOWNHOME UNITS IN PAIRS
LOCATED ON PRIVATE STREET B

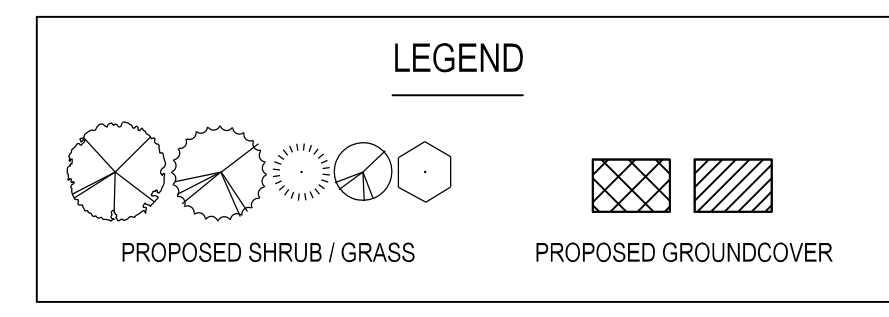


16' TOWNHOME UNITS

INDIVIDUAL LOT PLANT SCHEDULE FOR 2 OVER 2 UNITS					
KEY	BOTANICAL NAME	COMMON NAME	SIZE	TYPE	REMARK
A	<i>Hydrangea paniculata</i>	PeeGee Hydrangea	30"-36"	B&B/#6 cont.	Full-sun to Part-shade
	<i>Rhododendron catawbiense 'Grandiflorum'</i>	Grandiflorum Catawba Rhododendron	30"-36"	B&B/#6 cont.	Full-sun to Part-shade
	<i>Hydrangea serrata 'Grayswood'</i>	Sawtooth Hydrangea	30"-36"	B&B/#6 cont.	Part-sun to Full-shade
	<i>Viburnum carlesii</i>	Korean Spice Viburnum	30"-36"	B&B/#6 cont.	Full-sun to Part-shade
B	<i>Chamaecyparis pisifera 'Golden Mops'</i>	Sawara Cypress	30"-36"	B&B/#6 cont.	Full-sun to Part-shade
	<i>Taxus x media 'Densiformis'</i>	Dense Spreading Yew	30"-36"	B&B/#6 cont.	Full-sun to Part-shade
	<i>Prunus laurocerasus 'Schipkaensis'</i>	Schipka Cherry Laurel	30"-36"	B&B/#6 cont.	Part-sun to Part-shade
C	<i>Forsythia 'Arnold Dwarf'</i>	Forsythia	24"-30"	B&B/#3 cont.	Full-sun to Part-shade
	<i>Aronia arbutifolia 'Brilliantissima'</i>	Chokeberry	24"-30"	B&B/#3 cont.	Full-sun to Part-shade
	<i>Itea virginica 'Sprich (Little Henry)'</i>	Virginia Sweetspire	24"-30"	B&B/#3 cont.	Full-sun to Part-shade
	<i>Spiraea nipponica 'snowmound'</i>	Japanese Spiraea	24"-30"	B&B/#3 cont.	Full-sun to Part-shade
D	<i>Ilex verticillata</i>	Winterberry	24"-30"	B&B/#3 cont.	Full-sun to Part-shade
	<i>Leucothoe axillaris</i>	Coastal Doghobble	24"-30"	B&B/#3 cont.	Part-shade
E	<i>Ilex glabra 'Compacta'</i>	Compact Inkberry Holly	24"-30"	B&B/#3 cont.	Full-sun to Part-shade
	<i>Rhododendron 'Hino-crimson'</i>	Evergreen Azalea	24"-30"	B&B/#3 cont.	Part-shade
	<i>Buxus microphylla 'Faulkner'</i>	Littleleaf Boxwood	24"-30"	B&B/#3 cont.	Part-sun to Full-shade
F	<i>Dryopteris erythrosora</i>	Autumn Fern	#2	cont.	Part-sun to Full-shade
	<i>Hosta 'Blue Cadet'</i>	Hosta	#2	cont.	Part-sun to Full-shade
	<i>Hemerocallis 'Stella D'Oro'</i>	Stella D' Oro Daylily	#2	cont.	Full-sun to Part-shade
	<i>Liriope muscari 'Variegata'</i>	Lilyturf	#2	cont.	Full-sun to Full-shade
	<i>Calamagrostis x acutiflora 'Karl Foerster'</i>	Feather Reed Grass	#2	cont.	Full-sun to Part-shade
	<i>Heuchera villosa 'Night Watch'</i>	Giant Alumroot	#2	cont.	Part-sun to Full-shade
G	<i>Geranium 'Jason Bloom'</i>	Hardy Geranium	#2	cont.	Full-sun to Part-shade
	<i>Sarcococca rusofolia</i>	Sweet Box	#1	cont.	Full-shade
H	<i>Juniperus squamata 'Blue Star'</i>	Flaky Juniper	#1	cont.	Full-sun to Part-shade
	<i>Ajuga reptans 'Burgundy Glow'</i>	Carpet Bugle	#2	cont.	Part-sun to Full-shade
I	<i>Hypericum calycinum</i>	St. John's Wort	#1	cont.	Full-sun to Part-shade
	<i>Pachysandra terminalis</i>	Pachysandra	#1	cont.	Full-sun to Part-shade



2 OVER 2 UNITS



DEVELOPER'S CERTIFICATE
The undersigned agrees to execute all the features of the Plan Approval No. 820210080, including Approval Conditions, Development Program, and Landscape and Lighting Plan.
Developer's Name: WILGUS-MONTROSE ASSOCIATES LLC
Address: 7811 MONTROSE ROAD, SUITE 200, POTOMAC, MD 20854
Phone: (240) 399-1500
Signature: _____

SOLTESZ, INC.
Rockville
Lanham
Waldorf
Leonardtown
Frederick
Soltesz DC, LLC

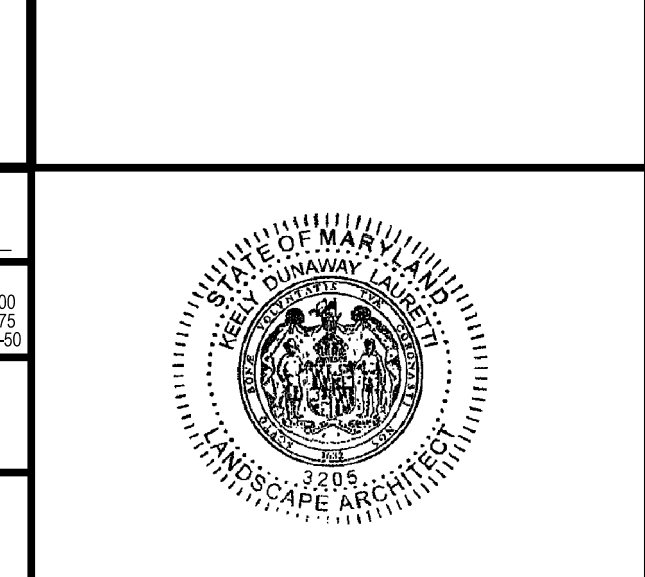
ROCKVILLE OFFICE
2 Research Place, Suite 100
Rockville, MD 20850
P. 301.948.2750 F. 301.948.9067

NO.	DATE	REVISIONS	BY	DATE
DESIGNED: SAC	DECEMBER 2020	CAO STANDARDS VERSION: 18 - NCS	TECHNICAL: JCW	CHECKED: KDL

MISS UTILITY NOTE
INFORMATION CONCERNING EXISTING UNDERGROUND UTILITIES WAS OBTAINED FROM AVAILABLE RECORDS. THE CONTRACTOR MUST DETERMINE THE EXACT LOCATION AND ELEVATION OF ALL EXISTING UTILITIES AND UTILITIES ORIGINATING BY ENGINE TEST FITS BY HAND, WELL IN ADVANCE OF THE START OF EXCAVATION. CONTACT "MISS UTILITY" AT 1-800-261-7777. 48 HOURS PRIOR TO THE START OF EXCAVATION. IF CLEARANCES ARE LESS THAN SHOWN ON THE PLAN OR TWELVE (12) INCHES, WHOEVER IS LESS, CONTACT THE ENGINEER AND THE UTILITY COMPANY BEFORE PROCEEDING WITH CONSTRUCTION. CLEARANCES LESS THAN NOTED MAY REQUIRE REVISIONS TO THIS PLAN.

OWNER/DEVELOPER/APPLICANT
WILGUS-MONTROSE ASSOCIATES LLC
7811 MONTROSE ROAD
SUITE 200
POTOMAC, MD 20854
PHONE: (240) 399-1500
ROCKEN@WILGUS.COM
RICHARD COHEN

MAP: ADC	GRID: 5285
TAX MAP: G0562	DRAWING CATEGORY: (2) 201, (3) 201, (4) 201, (5) 201, (6) 201, (7) 201, (8) 201, (9) 201, (10) 201
WSSC 200' SHEET: 215 NW 06	SITE DATUM: HORIZONTAL: NAD83, VERTICAL: NAD83



TYPICAL UNIT LANDSCAPE PLANS

LANDSCAPE AND LIGHTING PLAN 820210080
NORTH PARK AT MONTROSE
(FORMERLY WILGUS TRACT)

ROCKVILLE (4TH) ELECTION DISTRICT, MONTGOMERY COUNTY, MARYLAND

PROJECT NO. 1325-02-01

SHEET **L1.14**