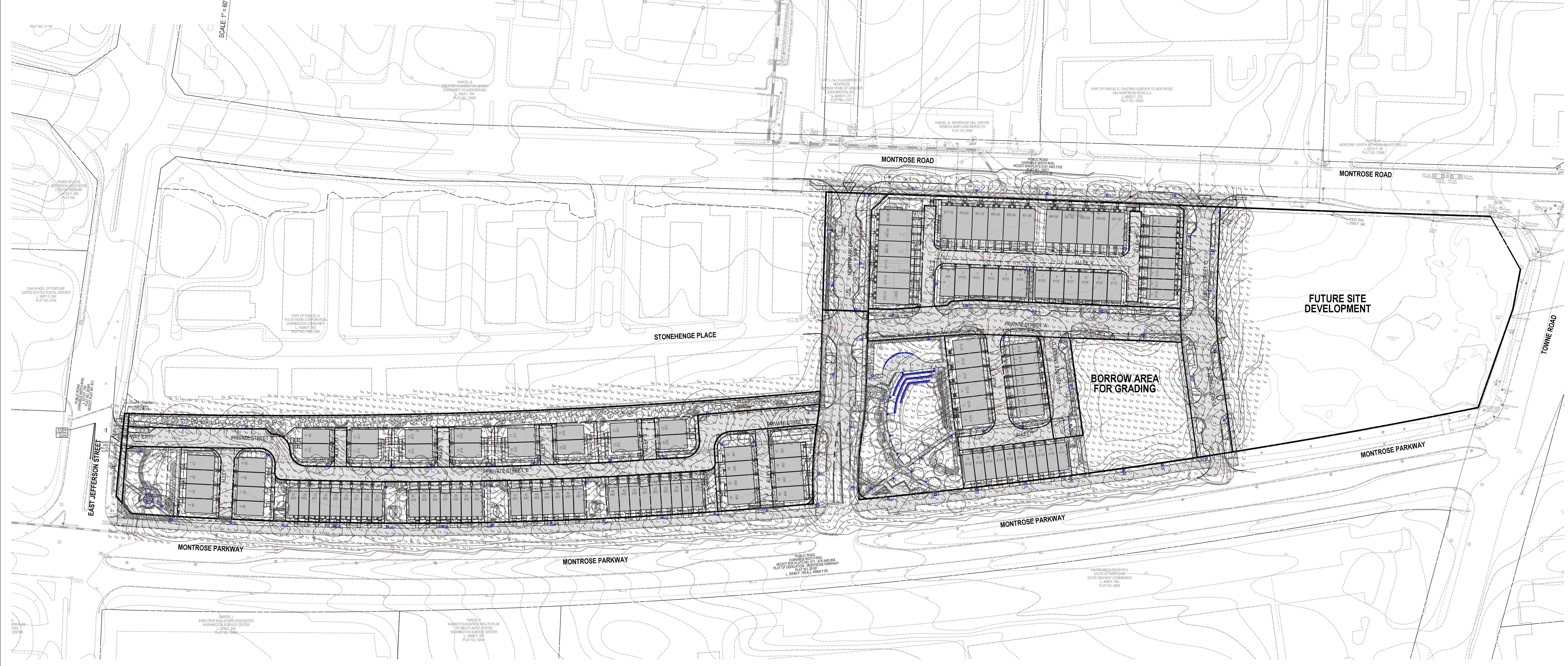


The original of this drawing document was prepared by Soltesz, Inc. (SOLTESZ). This document was not obtained directly from SOLTESZ, and/or it was transmitted electronically. SOLTESZ cannot guarantee that unauthorized changes and/or alterations were not made by others. If verification of the information contained herein is needed, contact should be made directly with SOLTESZ. SOLTESZ makes no warranties, express or implied, concerning the accuracy of any information that has been transmitted by electronic means.

PLANNING DEPARTMENT USE ONLY (E-PLANS)



Lighting Statistics

AVG.	1.6
MAX.	10.1
MIN.	0.0
MAX/MIN.	N/A
AVG/MIN.	N/A

LEGEND:

	PROPOSED RIGHT-OF-WAY
	PROPOSED BUILDING
	EXISTING CONTOUR
	PROPOSED CONTOUR
	PROPOSED STORM DRAIN
	PROPOSED TREES
	PROPOSED LIGHTING

NORTH PARK AT MONTROSE PHASE I SITE PLAN LIGHTING SCHEDULE

Label	Symbol	Quantity	Catalog Number	Description	Mounting Height	Manufacturer	Lamp Lumens	LLF	Watts	File
A		42	TX0348-G2-3-N7-16	Hagerstown Post Top LED	14'-0"	PHILIPS LIGHTING	Absolute	1	103.7	tx0348-g2-3-n7-16.ies
AR		21	TX0348-G2-3-N7-16	Hagerstown Post Top LED	14'-0"	PHILIPS LIGHTING	Absolute	1	103.7	tx0348-g2-3-n7-16.ies
AS		15	TX0348-G2-3-N7-16	Hagerstown Post Top LED	14'-0"	PHILIPS LIGHTING	Absolute	1	103.7	tx0348-g2-3-n7-16.ies
AT		7	TX0348-G2-3-N7-H-16	Hagerstown Post Top LED	14'-0"	PHILIPS LIGHTING	Absolute	1	103.7	tx0348-g2-3-n7-h-16.ies
B		9	LPLCO-512_LED_NS	Light Column Pedestrian, Series 500	11'-0"	FORMS+SURFACES	11	1	38.4	LPLCO-512_LED_NS.ies
L		66	S7001W.13	Continuous Line 98 LED	0'-0"	SISTEMALUX	Absolute	1	7.0	S7001W.ies
U		8	LED-e66-SP-12	Delta Star LED	0'-0"	B-K LIGHTING	Absolute	1	7.0	LED-e66-SP-12-ITL86007.ies

NOTE: HOUSE SHIELDS WILL BE PROVIDED ON THE HAGERSTOWN POST TOP FIXTURE TO PREVENT DIRECT GLARE ONTO ANY ADJACENT PUBLIC OR PRIVATE PROPERTY.



DEVELOPER'S CERTIFICATE
 The undersigned agrees to execute all the features of the Plan Approval No. 820210080, including Approval Conditions, Development Program, and Landscape and Lighting Plan.
 Developer's Name: WILGUS-MONTROSE ASSOCIATES LLC
 Address: 7811 MONTROSE ROAD, SUITE 200, POTOMAC, MD 20854
 Phone: (240) 398-1500
 Signature: _____

SOLTESZ, INC.
 Engineering
 Surveying
 Planning
 Environmental Sciences

Rockville
 Lanham
 Waldorf
 Leonardtown
 Frederick
 Soltesz DC, LLC

ROCKVILLE OFFICE
 2 Research Place, Suite 100
 Rockville, MD 20850
 P. 301.948.2750 F. 301.948.9067
 www.soltesz.com

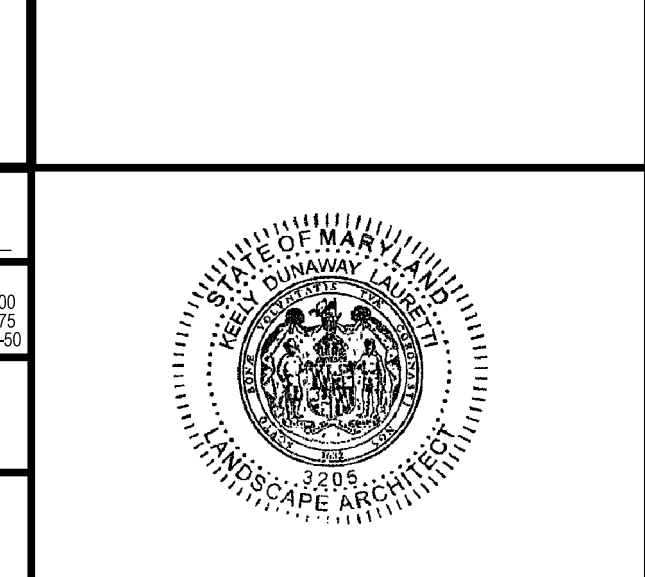
NO.	DATE	DESIGNED	BY	DATE	REVISIONS
1	DECEMBER 2020	SAC	JCW		18 - NCS

TECHNICIAN: JCW
 CHECKED: KDL

MISS UTILITY NOTE
 INFORMATION CONCERNING EXISTING UNDERGROUND UTILITIES WAS OBTAINED FROM AVAILABLE RECORDS. THE CONTRACTOR MUST DETERMINE THE EXACT LOCATION AND ELEVATION OF ALL EXISTING UTILITIES AND UTILITY CROSSINGS BY ENGINEER TEST FITS BY HAND, WELL IN ADVANCE OF THE START OF EXCAVATION. CONTACT MISS UTILITY AT 1-800-261-7777 48 HOURS PRIOR TO THE START OF EXCAVATION. IF CLEARANCES ARE LESS THAN SHOWN ON THIS PLAN OR TWELVE (12) INCHES, WHICHEVER IS LESS, CONTACT THE ENGINEER AND THE UTILITY COMPANY BEFORE PROCEEDING WITH CONSTRUCTION. CLEARANCES LESS THAN NOTED MAY REQUIRE REVISIONS TO THIS PLAN.

OWNER/DEVELOPER/APPLICANT
 WILGUS-MONTROSE ASSOCIATES LLC
 7811 MONTROSE ROAD
 SUITE 200
 POTOMAC, MD 20854
 PHONE: (240) 398-1500
 ROCKEN@WILCO.COM
 RICHARD COHEN

MAP	ADC	GRID	5285
TAX MAP	G0562	ZONING CATEGORY	CR-20 (C-10, R-10, R-20, CR-20, CR-30, R-10, R-20, CR-20, CR-30, R-10, R-20)
WBSIC 200 SHEET	215 NW 06	SITE DATUM	HORIZONTAL: NAD83 VERTICAL: NAD83



OVERALL LIGHTING PLAN - 60 SCALE

LANDSCAPE AND LIGHTING PLAN 820210080
NORTH PARK AT MONTROSE
(FORMERLY WILGUS TRACT)

ROCKVILLE (4TH) ELECTION DISTRICT, MONTGOMERY COUNTY, MARYLAND

PROJECT NO. 1326-02-01

SHEET **LT.1.0**