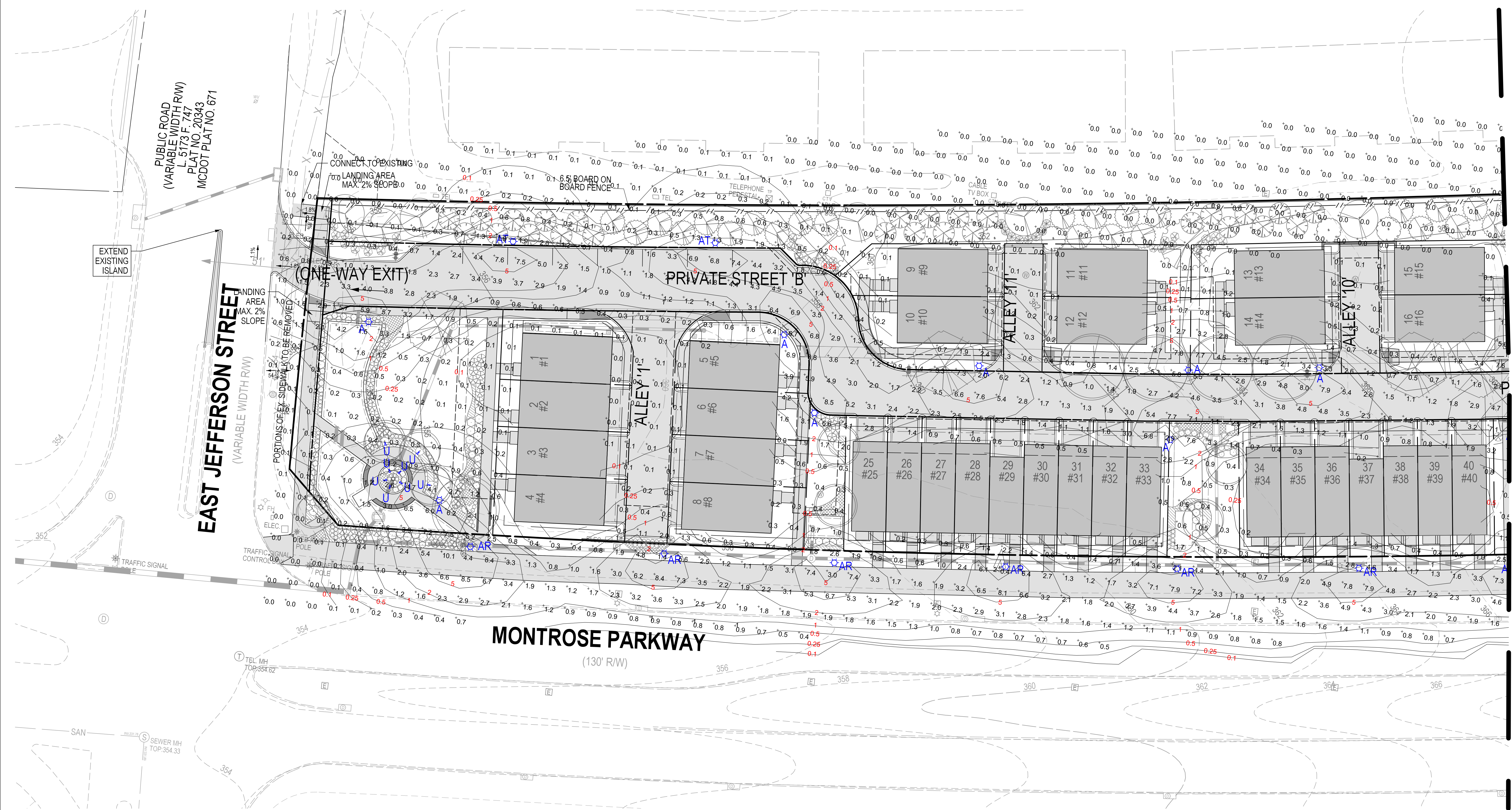


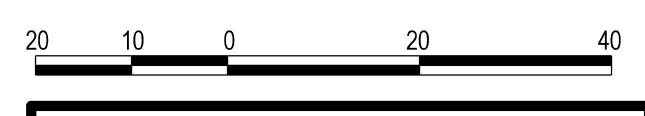
PLANNING DEPARTMENT USE ONLY (E-PLANS)

SCALE: 1" = 20'



MATCHLINE - SEE SHEET LT.12

**DEVELOPER'S CERTIFICATE**  
 The Undersigned agrees to execute all the features of the Plan Approval No. 820210080, including Approval Conditions, Development Program, and Landscape and Lighting Plan.  
 Developer's Name: WILGUS-MONTROSE ASSOCIATES LLC  
 Address: 7811 MONTROSE ROAD, SUITE 200, POTOMAC, MD 20854  
 Phone: (240) 399-1500  
 Signature: \_\_\_\_\_



LIGHTING PLAN - 20 SCALE

**LANDSCAPE AND LIGHTING PLAN 820210080  
 NORTHPARK AT MONTROSE  
 (FORMERLY WILGUS TRACT)**



**SOLTESZ, INC.**  
 Rockville Office  
 2 Research Place, Suite 100  
 Rockville, MD 20850  
 P. 301.948.2750 F. 301.948.9067  
 www.soltesz.com

NO.	DATE	REVISIONS	BY	DATE
DESIGNED: SAC	DECEMBER 2020	CAO STANDARDS VERSION: 18 - NCS		
TECHNICIAN: JCW				
CHECKED: KDL				

**MISS UTILITY NOTE**  
 INFORMATION CONCERNING EXISTING UNDERGROUND UTILITIES WAS OBTAINED FROM AVAILABLE RECORDS. THE CONTRACTOR MUST DETERMINE THE EXACT LOCATION AND ELEVATION OF ALL EXISTING UTILITIES AND UTILITY CROSSINGS BY EXCAVATION TEST PITS BY HAND, WELL IN ADVANCE OF THE START OF EXCAVATION. CONTACT "MISS UTILITY" AT 1-800-261-7777 48 HOURS PRIOR TO THE START OF EXCAVATION. IF CLEARANCES ARE LESS THAN SHOWN ON THIS PLAN OR TWELVE (12) INCHES, WHICHEVER IS LESS, CONTACT THE ENGINEER AND THE UTILITY COMPANY BEFORE PROCEEDING WITH CONSTRUCTION. CLEARANCES LESS THAN NOTED MAY REQUIRE REVISIONS TO THIS PLAN.

**OWNER/DEVELOPER/APPLICANT**  
 WILGUS-MONTROSE ASSOCIATES LLC  
 7811 MONTROSE ROAD  
 SUITE 200  
 POTOMAC, MD 20854  
 PHONE: (240) 399-1500  
 ROCKEN@WILGUS.COM  
 RICHARD COHEN

MAP: ADC	GRID: 5285
TAX MAP: G0562	ZONING CATEGORY: CR-2 (C-1, R-1, R-2, R-3, R-4, R-5, R-6, R-7, R-8, R-9, R-10, R-11, R-12, R-13, R-14, R-15, R-16, R-17, R-18, R-19, R-20, R-21, R-22, R-23, R-24, R-25, R-26, R-27, R-28, R-29, R-30, R-31, R-32, R-33, R-34, R-35, R-36, R-37, R-38, R-39, R-40, R-41, R-42, R-43, R-44, R-45, R-46, R-47, R-48, R-49, R-50, R-51, R-52, R-53, R-54, R-55, R-56, R-57, R-58, R-59, R-60, R-61, R-62, R-63, R-64, R-65, R-66, R-67, R-68, R-69, R-70, R-71, R-72, R-73, R-74, R-75, R-76, R-77, R-78, R-79, R-80, R-81, R-82, R-83, R-84, R-85, R-86, R-87, R-88, R-89, R-90, R-91, R-92, R-93, R-94, R-95, R-96, R-97, R-98, R-99, R-100)
WBCS 200 SHEET: 215 NW 06	SITE DATUM: HORIZONTAL: NAD83 VERTICAL: NAD83



SHEET **LT.11**  
 PROJECT NO. 1325-02-01