

PLANNING DEPARTMENT USE ONLY (E-PLANS)

SCALE: 1" = 20'

PUBLIC ROAD
(VARIABLE WIDTH R/W)
L 5173 F 747
PLAT NO. 203843
MCDOT PLAT NO. 671

EAST JEFFERSON STREET
(VARIABLE WIDTH R/W)

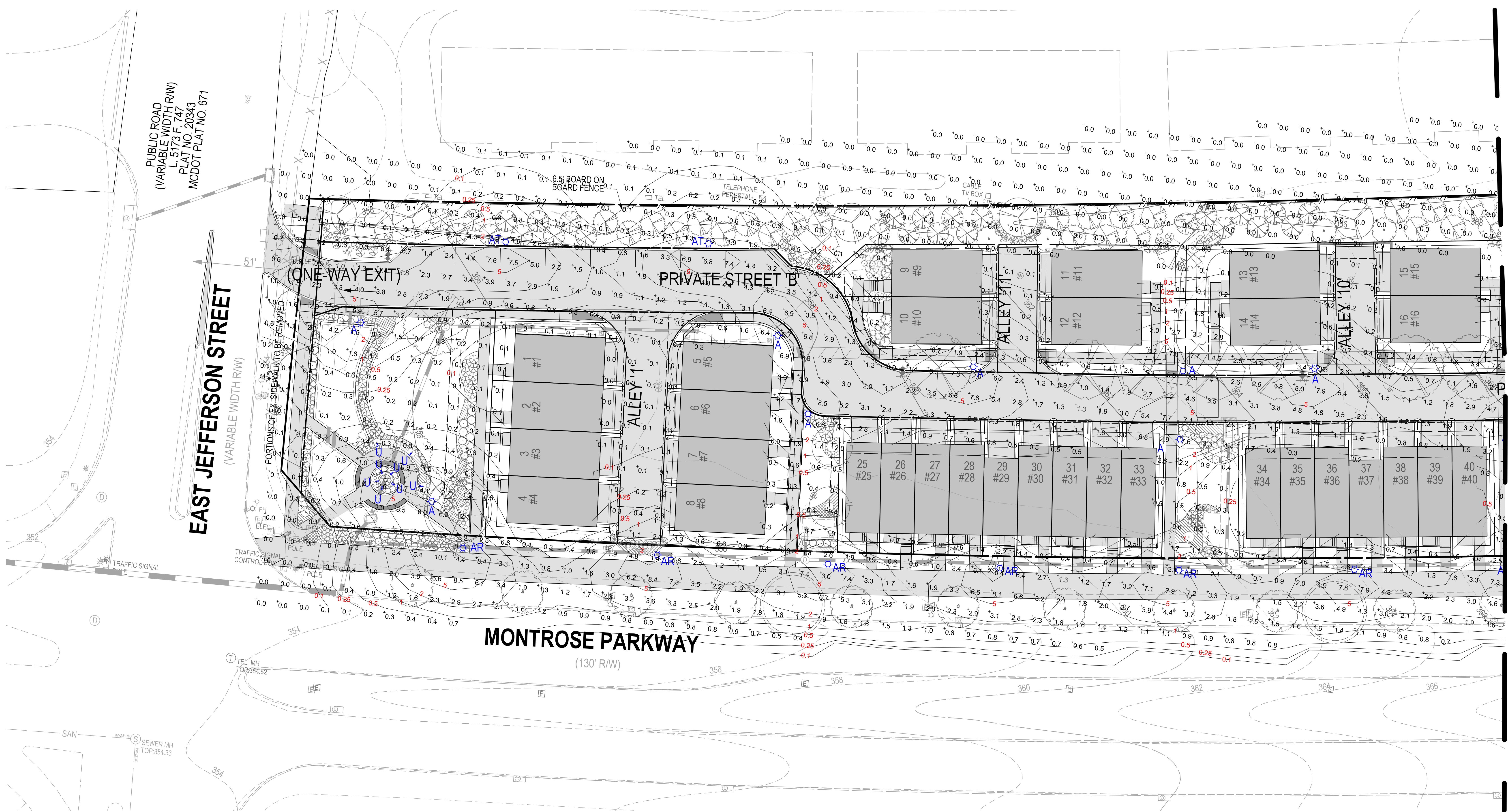
MATCHLINE - SEE SHEET LT.12

MONTROSE PARKWAY
(130' R/W)

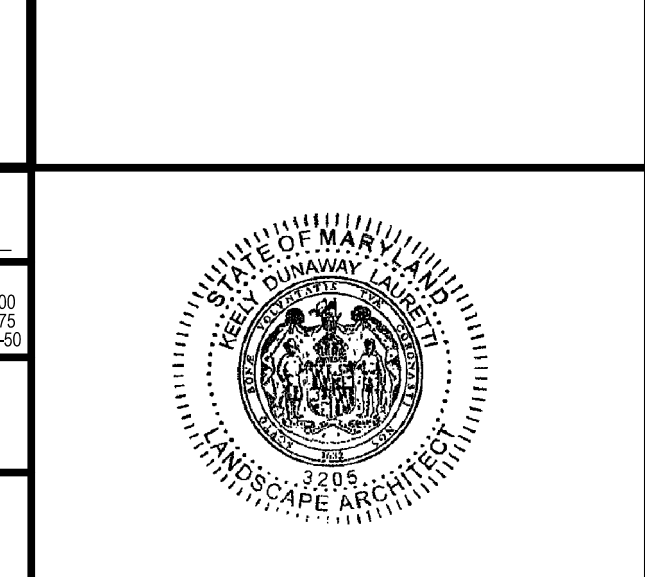
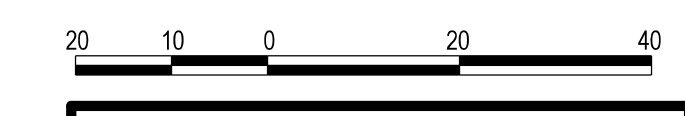
(ONE-WAY EXIT)

PRIVATE STREET B

The original of this drawing document was prepared by Soltesz, Inc. (SOLTESZ). This document was not obtained directly from SOLTESZ, Inc. (SOLTESZ). SOLTESZ cannot guarantee that unauthorized changes and/or alterations were not made by others. If verification of the information contained herein is needed, contact should be made directly with SOLTESZ. SOLTESZ makes no warranties, express or implied, concerning the accuracy of any information that has been transmitted by electronic means.



DEVELOPER'S CERTIFICATE
The Undersigned agrees to execute all the features of the Plan Approval No. 820210080 including Approval Conditions, Development Program, and Landscape and Lighting Plan.
Developer's Name: WILGUS-MONTROSE ASSOCIATES LLC
Address: 7811 MONTROSE ROAD, SUITE 200, POTOMAC, MD 20854
Phone: (240) 399-1500
Signature: RICHARD COHEN, Contact Person



LIGHTING PLAN - 20 SCALE

LANDSCAPE AND LIGHTING PLAN 820210080
NORTH PARK AT MONTROSE
(FORMERLY WILGUS TRACT)

SHEET LT.11
PROJECT NO. 1325-02-01

SOLTESZ, INC.
Rockville Office
2 Research Place, Suite 100
Rockville, MD 20850
P. 301.948.2750 F. 301.948.9067

Rockville
Lanham
Waldorf
Leonardtown
Frederick
Soltesz DC, LLC

NO.	DATE	REVISIONS	BY	DATE
DESIGNED: SAC	DECEMBER 2020	CAO STANDARDS VERSION: 18 - NCS		
TECHNICIAN: JCW				
CHECKED: KDL				

MISS UTILITY NOTE
INFORMATION CONCERNING EXISTING UNDERGROUND UTILITIES WAS OBTAINED FROM AVAILABLE RECORDS. THE CONTRACTOR MUST DETERMINE THE EXACT LOCATION AND ELEVATION OF ALL EXISTING UTILITIES AND UTILITY CROSSINGS BY EXCAVATION TEST PITS BY HAND, WELL IN ADVANCE OF THE START OF EXCAVATION. CONTACT "MISS UTILITY" AT 1-800-261-7777 48 HOURS PRIOR TO THE START OF EXCAVATION. IF CLEARANCES ARE LESS THAN SHOWN ON THIS PLAN OR TWELVE (12) INCHES, WHOEVER IS LESS, CONTACT THE ENGINEER AND THE UTILITY COMPANY BEFORE PROCEEDING WITH CONSTRUCTION. CLEARANCES LESS THAN NOTED MAY REQUIRE REVISIONS TO THIS PLAN.

OWNER/DEVELOPER/APPLICANT
WILGUS-MONTROSE ASSOCIATES LLC
7811 MONTROSE ROAD
SUITE 200
POTOMAC, MD 20854
PHONE: (240) 399-1500
RICHARD@WILGUS.COM
RICHARD COHEN

MAP: ADC	GRID: 5285
TAX MAP: G0592	ZONING CATEGORY: CR-2 (S.D. 14.05.003)
WBCS 200 SHEET: 215 NW 06	CRACKS: CCR, RLR, HD
SITE DATUM: HORIZONTAL: NAD83	VERTICAL: NAD83