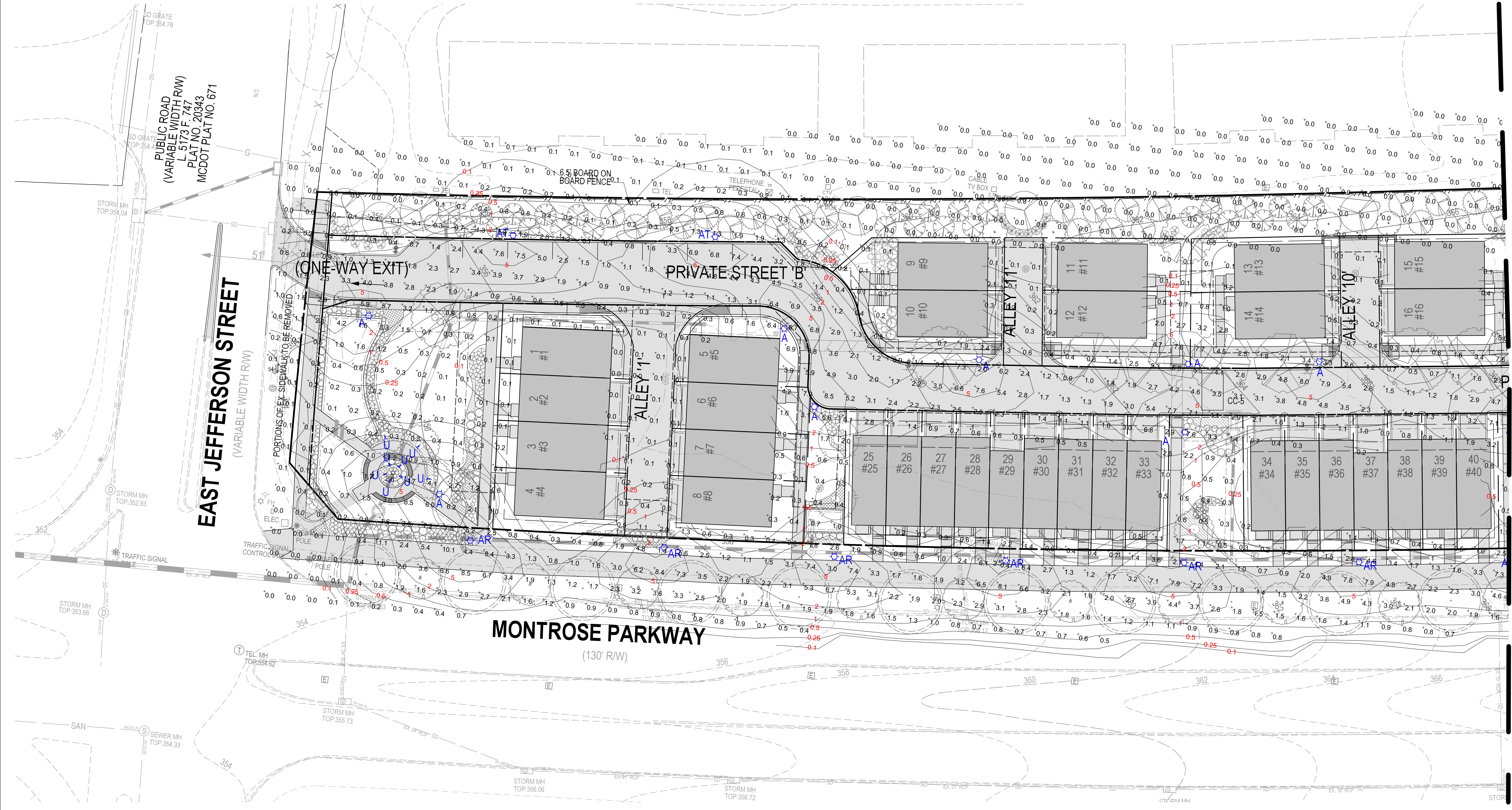


PLANNING DEPARTMENT USE ONLY (E-PLANS)

SCALE: 1" = 20'



MATCHLINE - SEE SHEET LT.1.2

DEVELOPER'S CERTIFICATE
 The Undersigned agrees to execute all the features of the Plan Approval No. 820210080 including Approval Conditions, Development Program, and Landscape and Lighting Plan.
 Developer's Name: WILGUS-MONTROSE ASSOCIATES LLC
 Address: 7811 MONTROSE ROAD, SUITE 200, POTOMAC, MD 20854
 Phone: (240) 399-1500
 Signature: _____



LIGHTING PLAN - 20 SCALE

**LANDSCAPE AND LIGHTING PLAN 820210080
 NORTHPARK AT MONTROSE
 (FORMERLY WILGUS TRACT)**



ROCKVILLE (4TH) ELECTION DISTRICT, MONTGOMERY COUNTY, MARYLAND

SOLTESZ, INC.
 Engineering
 Surveying
 Planning
 Environmental Sciences

Rockville Office
 2 Research Place, Suite 100
 Rockville, MD 20850
 P. 301.948.2750 F. 301.948.9067

Rockville
 Lanham
 Waldorf
 Leonardtown
 Frederick
 Soltesz DC, LLC

NO.	DATE	REVISIONS	BY	DATE
DESIGNED:	DECEMBER 2020	CAO STANDARDS VERSION: 18 - NCS		
TECHNICIAN:	SAC	TECHNICIAN: JCW		
CHECKED:			KDL	

MISS UTILITY NOTE
 INFORMATION CONCERNING EXISTING UNDERGROUND UTILITIES WAS OBTAINED FROM AVAILABLE RECORDS. THE CONTRACTOR MUST DETERMINE THE EXACT LOCATION AND ELEVATION OF ALL EXISTING UTILITIES AND UTILITY CROSSINGS BY EXCAVATING TEST PITS BY HAND, WELL IN ADVANCE OF THE START OF EXCAVATION. CONTACT "MISS UTILITY" AT 1-800-261-7777. 48 HOURS PRIOR TO THE START OF EXCAVATION, IF CLEARANCES ARE LESS THAN SHOWN ON THIS PLAN OR TWELVE (12) INCHES, WHOEVER IS LESS, CONTACT THE ENGINEER AND THE UTILITY COMPANY BEFORE PROCEEDING WITH CONSTRUCTION. CLEARANCES LESS THAN NOTED MAY REQUIRE REVISIONS TO THIS PLAN.

OWNER/DEVELOPER/APPLICANT
 WILGUS-MONTROSE ASSOCIATES LLC
 7811 MONTROSE ROAD
 SUITE 200
 POTOMAC, MD 20854
 PHONE: (240) 399-1500
 ROCKEN@WILGUS.COM
 RICHARD COHEN

MAP	ADC	GRID	5285
TAX MAP	G0562	ZONING CATEGORY:	CR-2 (S.D. 14.01.03) (S.D. 14.01.03) (S.D. 14.01.03) (S.D. 14.01.03)
WBCS 200 SHEET		SITE DATUM:	
215 NW 06		HORIZONTAL:	NAD83
		VERTICAL:	NAD83



SHEET **LT.1.1**
 PROJECT NO. 1325-02-01