

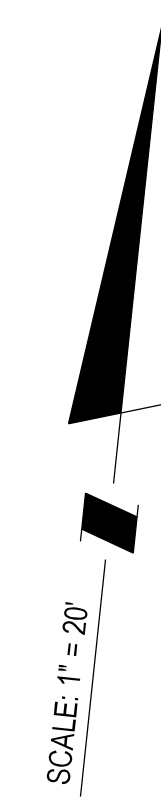
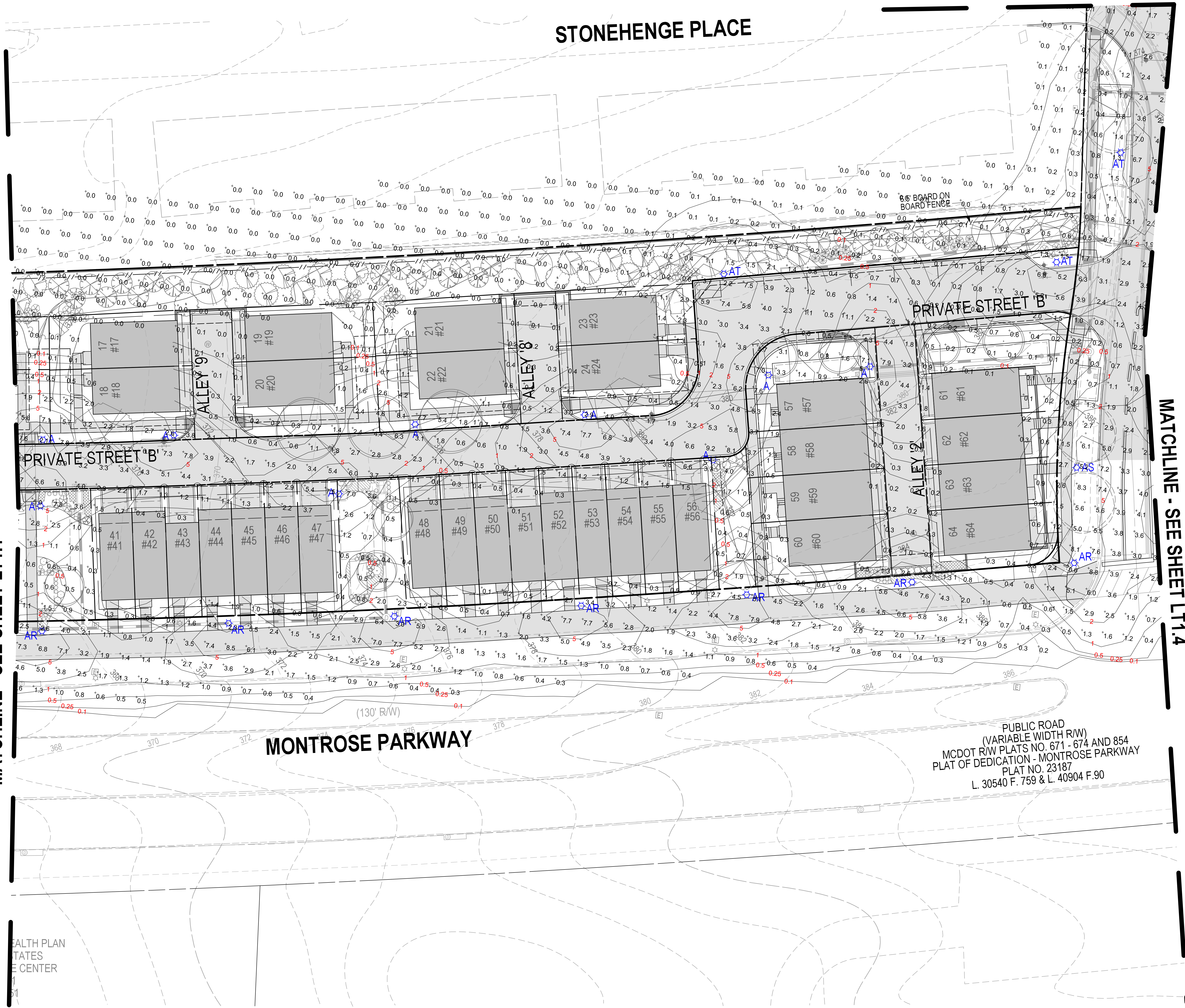
PLANNING DEPARTMENT USE ONLY (E-PLANS)

MATCHLINE - SEE SHEET LT1.3

STONEHENGE PLACE

MATCHLINE - SEE SHEET LT1.1

MATCHLINE - SEE SHEET LT1.4



PUBLIC ROAD
(VARIABLE WIDTH R/W)
MCDOT R/W PLATS NO. 671 - 674 AND 854
PLAT OF DEDICATION - MONTROSE PARKWAY
PLAT NO. 23187
L. 30540 F. 759 & L. 40904 F. 90

DEVELOPER'S CERTIFICATE
The Undersigned agrees to execute all the features of the Plan Approval No. 820210080 including Approval Conditions, Development Program, and Landscape and Lighting Plan.
Developer's Name: WILGUS-MONTROSE ASSOCIATES LLC RICHARD COHEN
Contact Person
Address: 7811 MONTROSE ROAD, SUITE 200, POTOMAC, MD 20854
Phone: (240) 399-1500
Signature: _____



SOLTESZ, INC.
Rockville Office
2 Research Place, Suite 100
Rockville, MD 20850
P. 301.948.2750 F. 301.948.9067

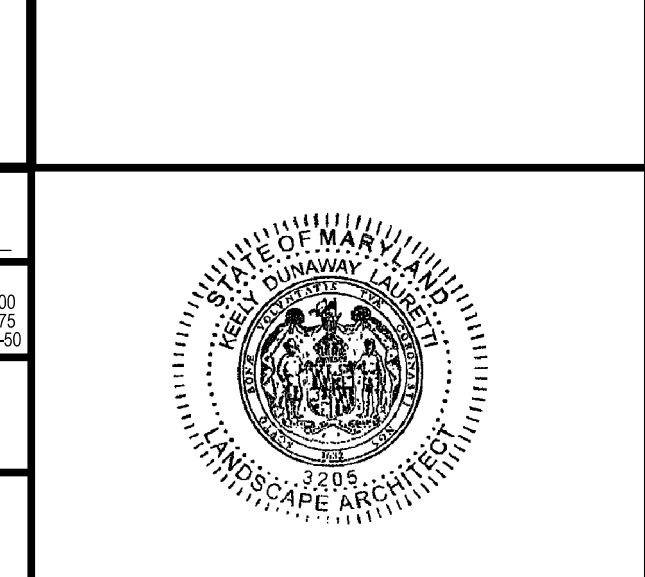
Rockville
Lanham
Waldorf
Leonardtown
Frederick
Soltesz DC, LLC

NO.	DATE	DESIGNED	BY	DATE
1	DECEMBER 2020	SAC		

MISS UTILITY NOTE
INFORMATION CONCERNING EXISTING UNDERGROUND UTILITIES WAS OBTAINED FROM AVAILABLE RECORDS. THE CONTRACTOR MUST DETERMINE THE EXACT LOCATION AND ELEVATION OF ALL EXISTING UTILITIES AND UTILITY CROSSINGS BY ENGINEERING TEST FITS BY HAND, WELL IN ADVANCE OF THE START OF EXCAVATION. CONTACT "MISS UTILITY" AT 1-800-261-7777, 48 HOURS PRIOR TO THE START OF EXCAVATION. IF CLEARANCES ARE LESS THAN SHOWN ON THE PLAN OR TWELVE (12) INCHES, WHICHEVER IS LESS, CONTACT THE ENGINEER AND THE UTILITY COMPANY BEFORE PROCEEDING WITH CONSTRUCTION. CLEARANCES LESS THAN NOTED MAY REQUIRE REVISIONS TO THIS PLAN.

OWNER/DEVELOPER/APPLICANT
WILGUS-MONTROSE ASSOCIATES LLC
7811 MONTROSE ROAD
SUITE 200
POTOMAC, MD 20854
PHONE: (240) 399-1500
ROCKING@WILCO.COM
RICHARD COHEN

MAP	ADC	GRID	5285
TAX MAP	G0562	PLANNING CATEGORY:	CR2 (C-1, C-2, C-3, C-4, C-5, C-6, C-7, C-8, C-9, C-10, C-11, C-12, C-13, C-14, C-15, C-16, C-17, C-18, C-19, C-20, C-21, C-22, C-23, C-24, C-25, C-26, C-27, C-28, C-29, C-30, C-31, C-32, C-33, C-34, C-35, C-36, C-37, C-38, C-39, C-40, C-41, C-42, C-43, C-44, C-45, C-46, C-47, C-48, C-49, C-50, C-51, C-52, C-53, C-54, C-55, C-56, C-57, C-58, C-59, C-60, C-61, C-62, C-63, C-64, C-65, C-66, C-67, C-68, C-69, C-70, C-71, C-72, C-73, C-74, C-75, C-76, C-77, C-78, C-79, C-80, C-81, C-82, C-83, C-84, C-85, C-86, C-87, C-88, C-89, C-90, C-91, C-92, C-93, C-94, C-95, C-96, C-97, C-98, C-99, C-100)
WBS#	200	SHEET	215 NW 06
SITE DATUM	HORIZONTAL: NAD83	VERTICAL:	NAD83



LIGHTING PLAN - 20 SCALE

LANDSCAPE AND LIGHTING PLAN 820210080
NORTH PARK AT MONTROSE
(FORMERLY WILGUS TRACT)

ROCKVILLE (4TH) ELECTION DISTRICT, MONTGOMERY COUNTY, MARYLAND

SHEET **LT.1.2**

PROJECT NO. 1325-02-01

The original of this drawing document was prepared by Soltesz, Inc. (SOLTESZ). This document was not obtained directly from SOLTESZ, Inc. SOLTESZ, Inc. cannot guarantee that unauthorized changes and/or alterations were not made by others. If verification of the information contained herein is needed, contact should be made directly with SOLTESZ, Inc. SOLTESZ makes no warranties, express or implied, concerning the accuracy of any information that has been transmitted by electronic means.