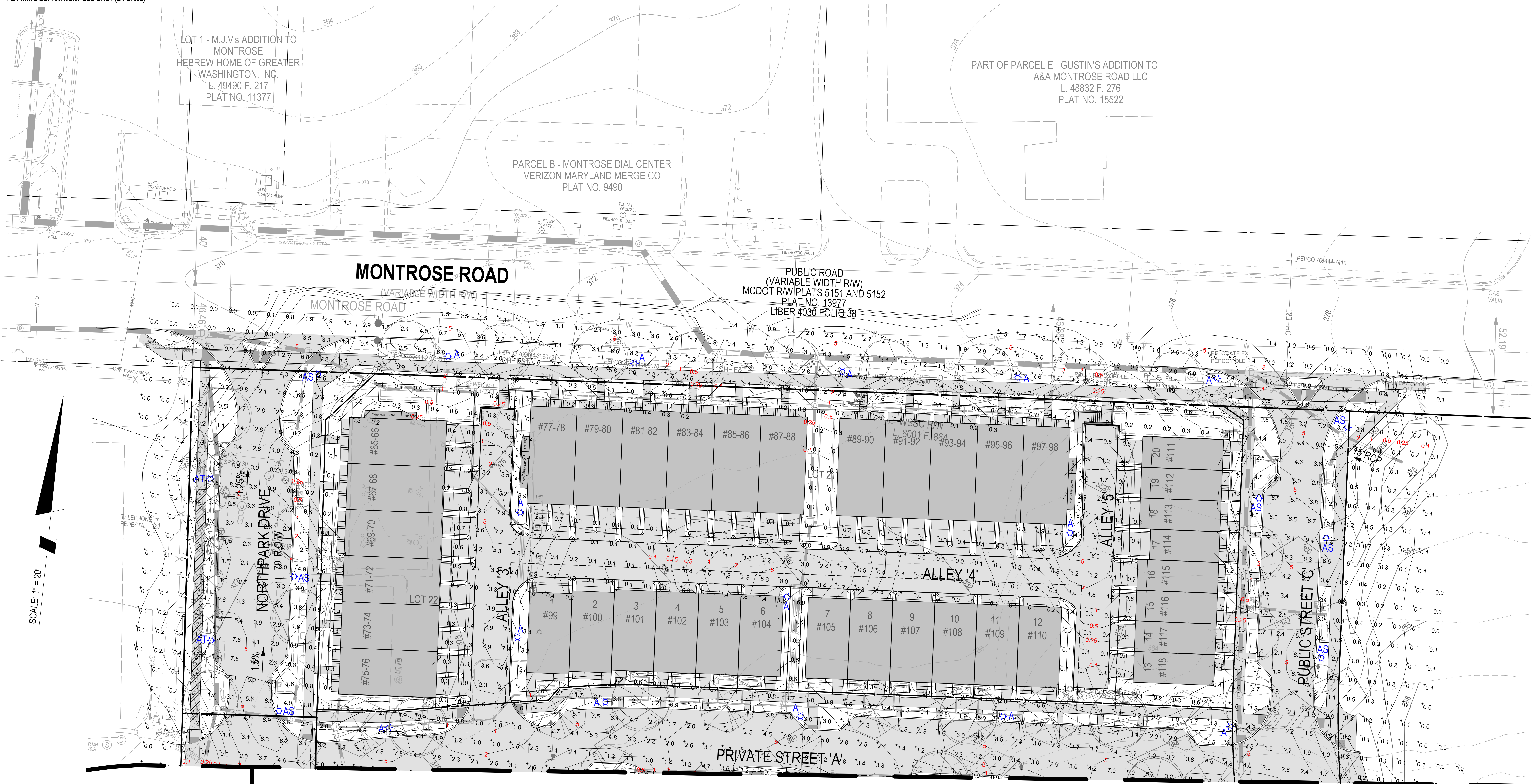


PLANNING DEPARTMENT USE ONLY (E-PLANS)



MATCHLINE - SEE SHEET LT1.2

MATCHLINE - SEE SHEET LT1.4

DEVELOPER'S CERTIFICATE
 The undersigned agrees to execute all the features of the Plan Approval No. 820210080 including Approval Conditions, Development Program, and Landscape and Lighting Plan.
 Developer's Name: WILGUS-MONTROSE ASSOCIATES LLC
 Contact Person: RICHARD COHEN
 Address: 7811 MONTROSE ROAD, SUITE 200, POTOMAC, MD 20854
 Phone: (240) 399-1500
 Signature: _____

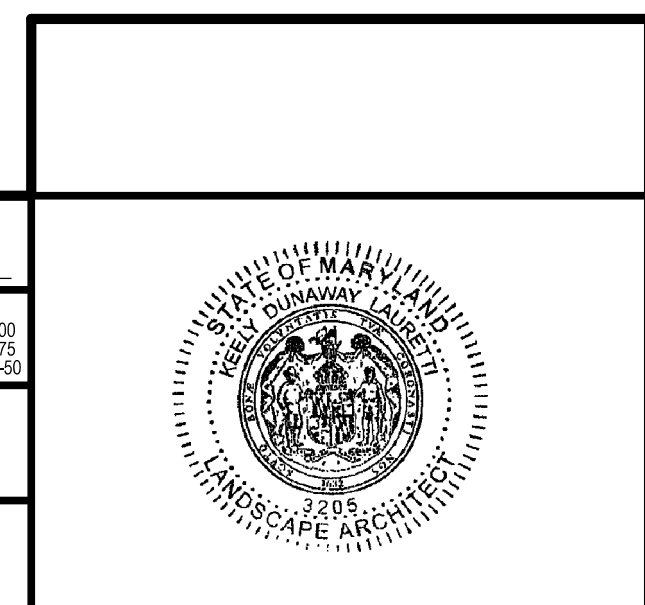
SOLTESZ, INC.
 Rockville Office
 2 Research Place, Suite 100
 Rockville, MD 20850
 P. 301.948.2750 F. 301.948.9067
 www.soltesz.com

NO.	DATE	DESIGNED	BY	DATE
1	DECEMBER 2020	SAC	KDL	

MISS UTILITY NOTE
 INFORMATION CONCERNING EXISTING UNDERGROUND UTILITIES WAS OBTAINED FROM AVAILABLE RECORDS. THE CONTRACTOR MUST DETERMINE THE EXACT LOCATION AND ELEVATION OF ALL EXISTING UTILITIES AND UTILITY CROSSINGS BY ENGINEERING TEST FITS BY HAND, WELL IN ADVANCE OF THE START OF EXCAVATION. CONTACT "MISS UTILITY" AT 1-800-261-7777, 48 HOURS PRIOR TO THE START OF EXCAVATION. IF CLEARANCES ARE LESS THAN SHOWN ON THE PLAN OR TWELVE (12) INCHES, WHOEVER IS LESS, CONTACT THE ENGINEER AND THE UTILITY COMPANY BEFORE PROCEEDING WITH CONSTRUCTION. CLEARANCES LESS THAN NOTED MAY REQUIRE REVISIONS TO THIS PLAN.

OWNER/DEVELOPER/APPLICANT
 WILGUS-MONTROSE ASSOCIATES LLC
 7811 MONTROSE ROAD
 SUITE 200
 POTOMAC, MD 20854
 PHONE: (240) 399-1500
 ROCKING@WILGUS.COM
 RICHARD COHEN

MAP	ADC	GRID	5285
TAX MAP	G0562	SHOWING CATEGORY:	CR-2 (S.A. 15.0% ROR) CR-2 (S.A. 15.0% ROR) CR-2 (S.A. 15.0% ROR)
WBCS 200 SHEET	215 NW 06	SITE DATUM:	HORIZONTAL: NAD83 VERTICAL: NAD83



LANDSCAPE AND LIGHTING PLAN 820210080
NORTHPARK AT MONTROSE
(FORMERLY WILGUS TRACT)

PROJECT NO. 1325-02-01
 SHEET **LT.1.3**

ROCKVILLE (4TH) ELECTION DISTRICT, MONTGOMERY COUNTY, MARYLAND

The original of this drawing document was prepared by Soltesz, Inc. (SOLTESZ). This document was not obtained directly from SOLTESZ, Inc. (SOLTESZ). SOLTESZ cannot guarantee that unauthorized changes and/or alterations were not made by others. Verification of the information contained herein is needed. Contact should be made directly with SOLTESZ. SOLTESZ makes no warranties, express or implied, concerning the accuracy of any information that has been transmitted by electronic means.