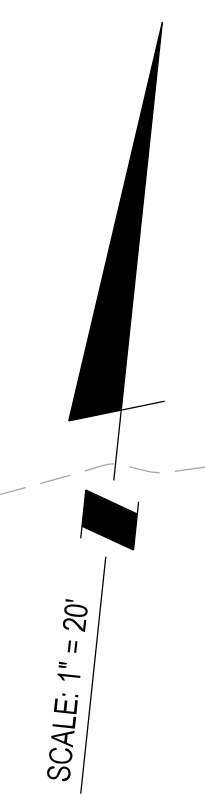
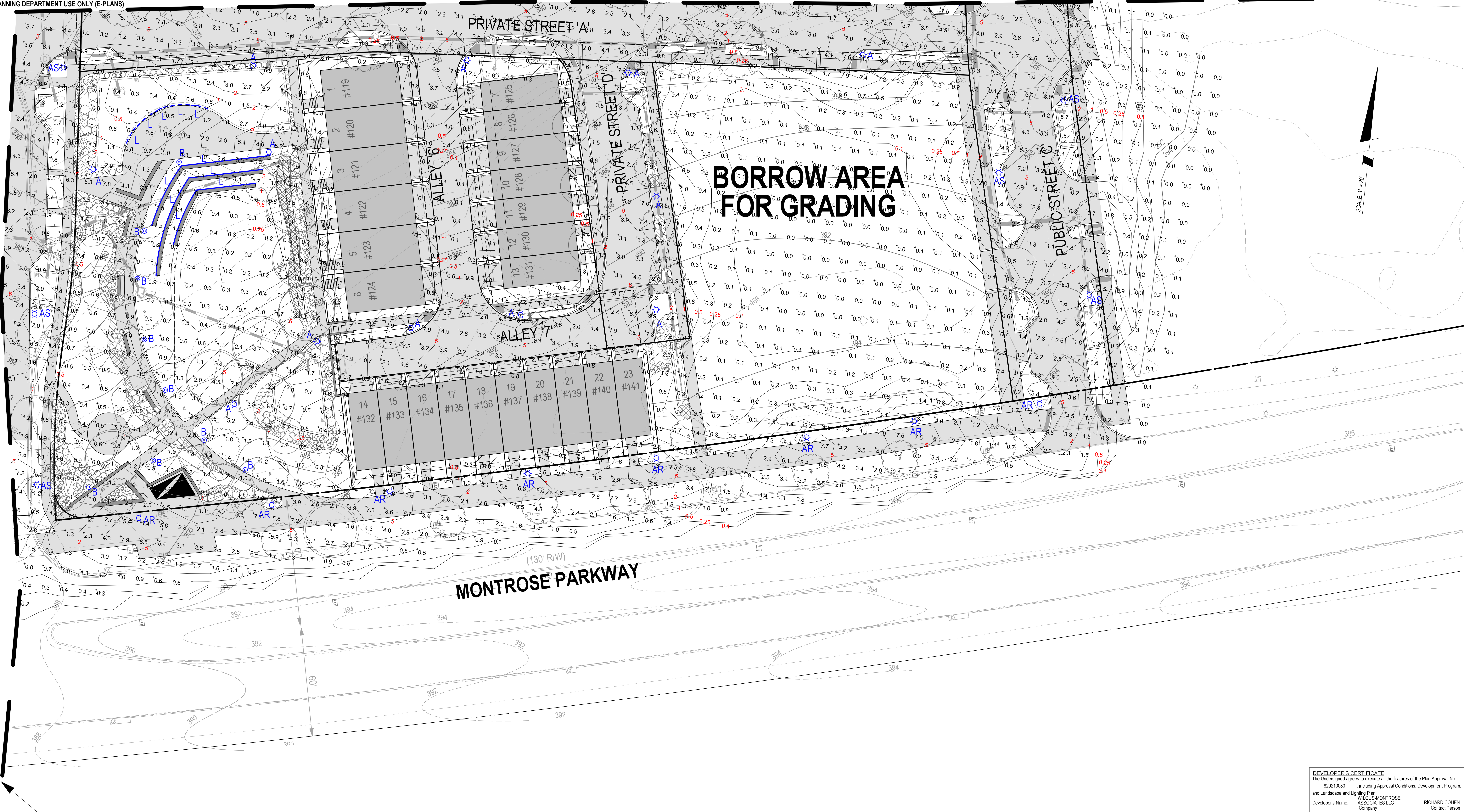


PLANNING DEPARTMENT USE ONLY (E-PLANS)

MATCHLINE - SEE SHEET LT1.3



SCALE 1" = 20'

MATCHLINE - SEE SHEET LT1.2



DEVELOPER'S CERTIFICATE
 The Undersigned agrees to execute all the features of the Plan Approval No. 820210080 including Approval Conditions, Development Program, and Landscape and Lighting Plan.
 Developer's Name: WILGUS-MONTROSE ASSOCIATES LLC
 Contact Person: RICHARD COHEN
 Address: 7811 MONTROSE ROAD, SUITE 200, POTOMAC, MD 20854
 Phone: (240) 399-1500
 Signature: _____

SOLTESZ, INC.
 Rockville
 Lanham
 Waldorf
 Leonardtown
 Frederick
 Soltesz DC, LLC

ROCKVILLE OFFICE
 2 Research Place, Suite 100
 Rockville, MD 20850
 P. 301.948.2750 F. 301.948.9067
 www.soltesz.com

NO.	DATE	DESIGNED	CAO STANDARDS VERSION	REVISIONS	BY	DATE
1	DECEMBER 2020	SAC	18 - NCS			
				TECHNICIAN: JCW		
				CHECKED: KDL		

MISS UTILITY NOTE
 INFORMATION CONCERNING EXISTING UNDERGROUND UTILITIES WAS OBTAINED FROM AVAILABLE RECORDS. THE CONTRACTOR MUST DETERMINE THE EXACT LOCATION AND ELEVATION OF ALL EXISTING UTILITIES AND UTILITY CROSSINGS BY ENGINEER TEST FITS BY HAND, WELL IN ADVANCE OF THE START OF EXCAVATION. CONTACT "MISS UTILITY" AT 1-800-261-7777 48 HOURS PRIOR TO THE START OF EXCAVATION. IF CLEARANCES ARE LESS THAN SHOWN ON THE PLAN OR TWELVE (12) INCHES, WHICHEVER IS LESS, CONTACT THE ENGINEER AND THE UTILITY COMPANY BEFORE PROCEEDING WITH CONSTRUCTION. CLEARANCES LESS THAN NOTED MAY REQUIRE REVISIONS TO THIS PLAN.

OWNER/DEVELOPER/APPLICANT
 WILGUS-MONTROSE ASSOCIATES LLC
 7811 MONTROSE ROAD
 SUITE 200
 POTOMAC, MD 20854
 PHONE: (240) 399-1500
 ROCKING@WILCO.COM
 RICHARD COHEN

MAP	ADC	GRID	5285
TAX MAP	G0562	ZONING CATEGORY	CR-2 (C-1, C-1A, C-2, C-3, C-4, C-5, C-6, C-7, C-8, C-9, C-10, C-11, C-12, C-13, C-14, C-15, C-16, C-17, C-18, C-19, C-20, C-21, C-22, C-23, C-24, C-25, C-26, C-27, C-28, C-29, C-30, C-31, C-32, C-33, C-34, C-35, C-36, C-37, C-38, C-39, C-40, C-41, C-42, C-43, C-44, C-45, C-46, C-47, C-48, C-49, C-50, C-51, C-52, C-53, C-54, C-55, C-56, C-57, C-58, C-59, C-60, C-61, C-62, C-63, C-64, C-65, C-66, C-67, C-68, C-69, C-70, C-71, C-72, C-73, C-74, C-75, C-76, C-77, C-78, C-79, C-80, C-81, C-82, C-83, C-84, C-85, C-86, C-87, C-88, C-89, C-90, C-91, C-92, C-93, C-94, C-95, C-96, C-97, C-98, C-99, C-100)
WBCS 200 SHEET	215 NW 06	SITE DATUM	
HORIZONTAL	NAD83	VERTICAL	NAD83



LIGHTING PLAN - 20 SCALE

LANDSCAPE AND LIGHTING PLAN 820210080
NORTH PARK AT MONTROSE
(FORMERLY WILGUS TRACT)

ROCKVILLE (4TH) ELECTION DISTRICT, MONTGOMERY COUNTY, MARYLAND

PROJECT NO. 1325-02-01

SHEET **LT1.4**

The original of this drawing document was prepared by Soltesz, Inc. (SOLTESZ). This document was not obtained directly from SOLTESZ, Inc. SOLTESZ, Inc. makes no warranty, express or implied, concerning the accuracy of any information that has been transmitted by electronic means.