

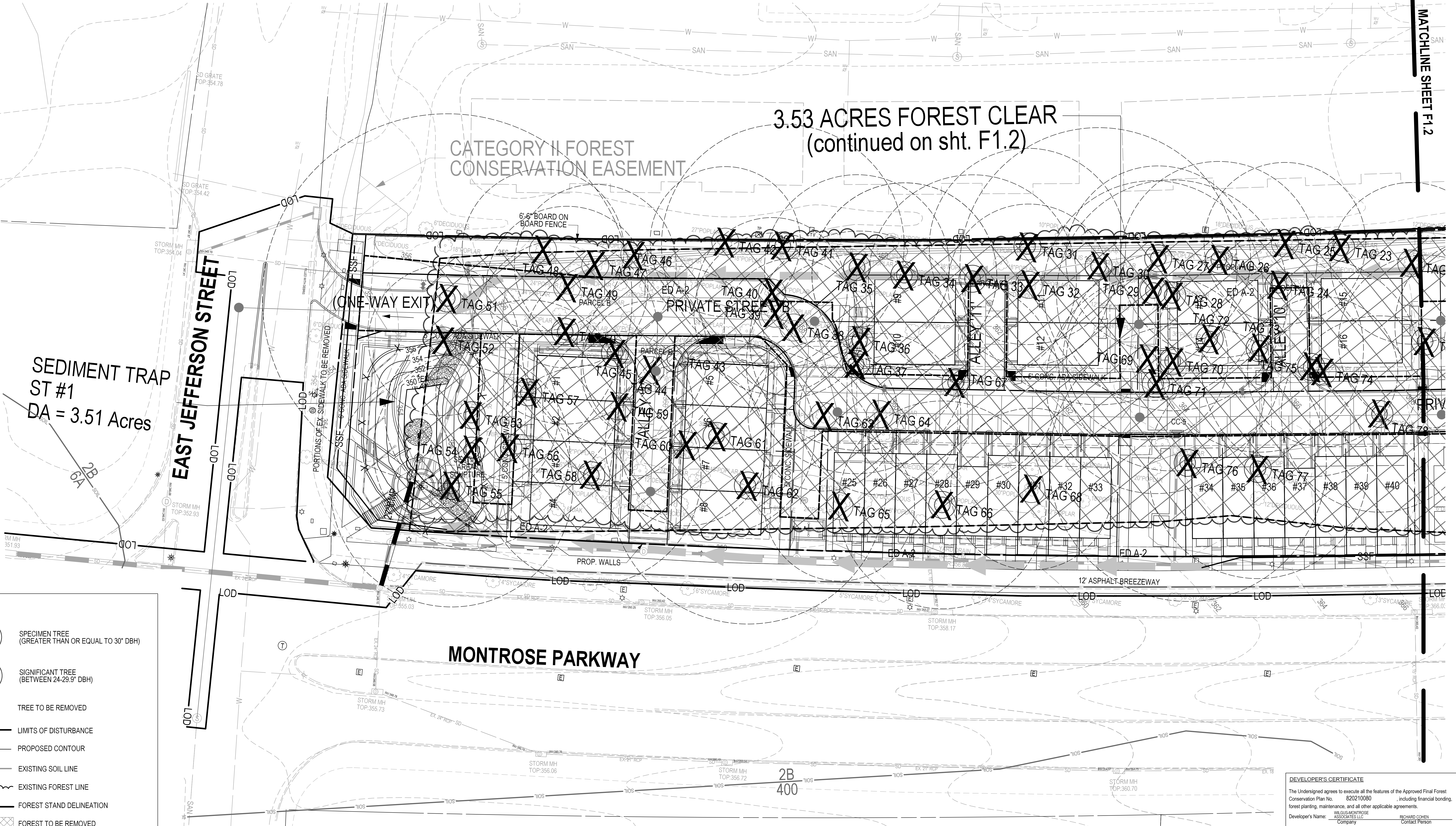
PLANNING DEPARTMENT USE ONLY (E-PLANS)

SCALE 1" = 20'

MATCHLINE SHEET F1.2

3.53 ACRES FOREST CLEAR
(continued on sht. F1.2)

CATEGORY II FOREST
CONSERVATION EASEMENT



LEGEND:

- SPECIMEN TREE (GREATER THAN OR EQUAL TO 30" DBH)
- SIGNIFICANT TREE (BETWEEN 24-29.9" DBH)
- TREE TO BE REMOVED
- LIMITS OF DISTURBANCE
- PROPOSED CONTOUR
- EXISTING SOIL LINE
- EXISTING FOREST LINE
- FOREST STAND DELINEATION
- FOREST TO BE REMOVED
- WETLAND
- WETLAND BUFFER

DEVELOPER'S CERTIFICATE

The Undersigned agrees to execute all the features of the Approved Final Forest Conservation Plan No. 820210080, including financial bonding, forest planning, maintenance, and all other applicable agreements.

Developer's Name: WILGUS MONTROSE ASSOCIATES, LLC RICHARD COHEN
CORPORATE PERSON

Address: 7811 MONTROSE ROAD, SUITE 200 POTOMAC, MD 20854
Phone: 301-369-1500

Signature: _____

SOLTESZ, INC.

Rockville
Lanham
Waldorf
Leonardtown
Frederick
Soltesz DC, LLC

ROCKVILLE OFFICE
2 Research Place, Suite 100
Rockville, MD 20850
P. 301.948.2750 F. 301.948.9067
www.soltesz.com

NO.	DATE	CAO STANDARD VERSION	REVISIONS	BY	DATE
DESIGNED:	OCTOBER 2020	KDL	V8 - NCS		
TECHNICIAN:		JW			
CHECKED:		KDL			

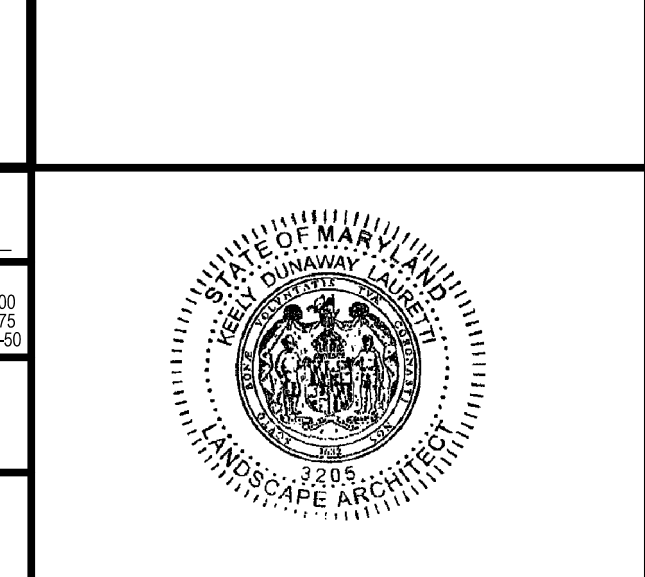
MISS UTILITY NOTE

INFORMATION CONCERNING EXISTING UNDERGROUND UTILITIES WAS OBTAINED FROM AVAILABLE RECORDS. THE CONTRACTOR MUST DETERMINE THE EXACT LOCATION AND ELEVATION OF ALL EXISTING UTILITIES AND UTILITY CROSSINGS BY ENGINEERING TEST PITS BY HAND, WELL IN ADVANCE OF THE START OF EXCAVATION. CONTACT "MISS UTILITY" AT 1-800-261-7777 48 HOURS PRIOR TO THE START OF EXCAVATION. IF CLEARANCES ARE LESS THAN SHOWN ON THIS PLAN OR TWELVE (12) INCHES, WHOEVER IS LESS, CONTACT THE ENGINEER AND THE UTILITY COMPANY BEFORE PROCEEDING WITH CONSTRUCTION. CLEARANCES LESS THAN NOTED MAY REQUIRE REVISIONS TO THIS PLAN.

OWNER/DEVELOPER/APPLICANT

WILGUS MONTROSE ASSOCIATES, LLC
7811 MONTROSE ROAD
SUITE 200
POTOMAC, MD 20854
PHONE: (301) 369-1500
RICHARD@WILLCO.COM
RICHARD COHEN

MAP	ADC	GRID	5285
TAX MAP	0202		
WBSC 200 SHEET			
215 NW 06			
SITE DATUM:			
HORIZONTAL:	NAD83		
VERTICAL:	NAD83		



FOREST CONSERVATION PLAN - TREE/FOREST REMOVAL PLAN

**FINAL FOREST CONSERVATION PLAN
NORTH PARK AT MONTROSE
(FORMERLY WILGUS TRACT)**

820210080

ROCKVILLE (4TH) ELECTION DISTRICT, MONTGOMERY COUNTY, MARYLAND

Scale: 1" = 20'

SHEET **F1.1**
OF **6**

PROJECT NO.
1325-02-01