

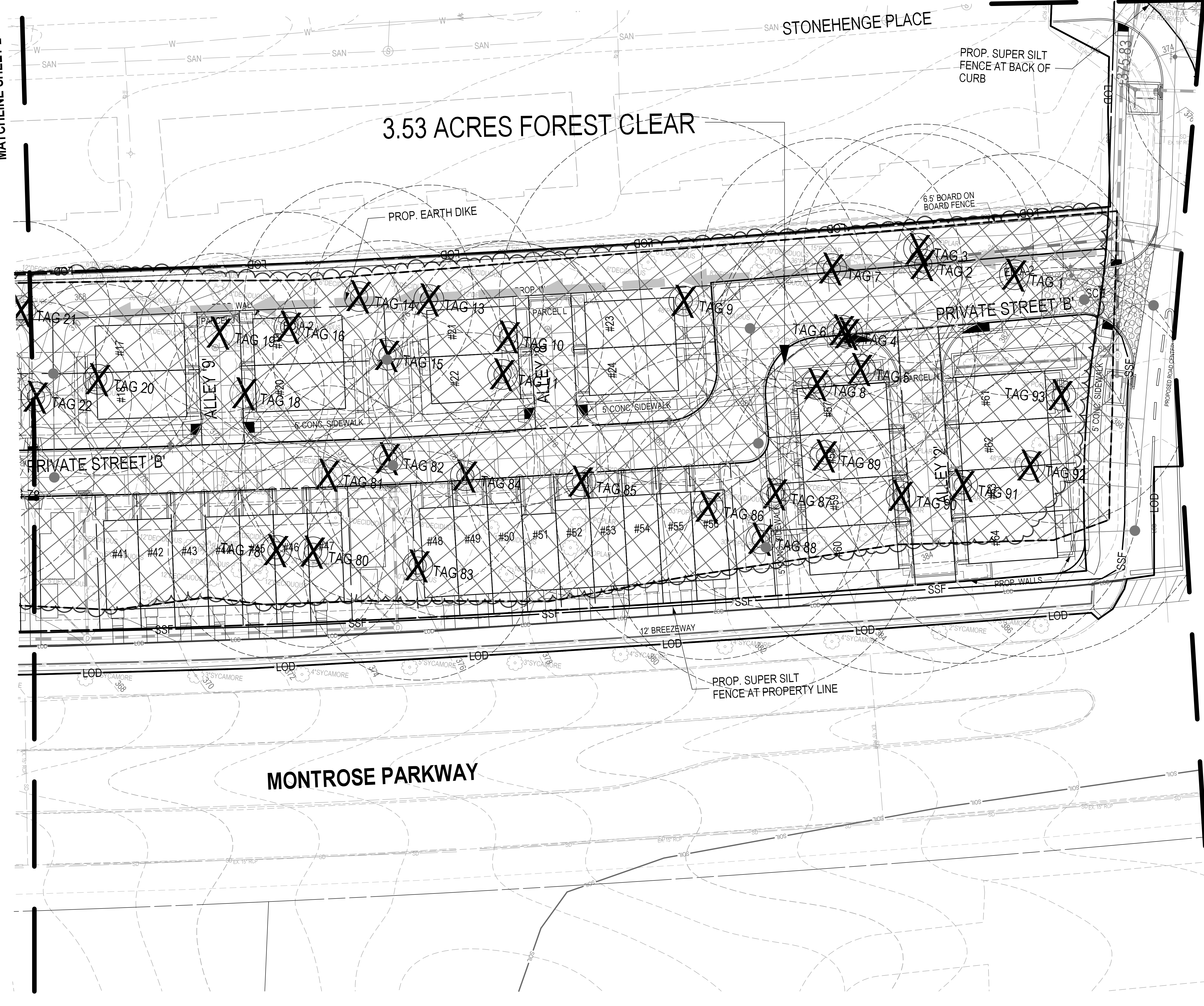
PLANNING DEPARTMENT USE ONLY (E-PLANS)

SCALE: 1" = 20'

MATCHLINE SHEET 2

MATCHLINE SHEET F1.3

MATCHLINE SHEET F1.4



**LEGEND:**

- SPECIMEN TREE (GREATER THAN OR EQUAL TO 30" DBH)
- SIGNIFICANT TREE (BETWEEN 24-29.9" DBH)
- TREE TO BE REMOVED
- LIMITS OF DISTURBANCE
- PROPOSED CONTOUR
- EXISTING SOIL LINE
- EXISTING FOREST LINE
- FOREST STAND DELINEATION
- FOREST TO BE REMOVED
- WETLAND
- WETLAND BUFFER

**DEVELOPER'S CERTIFICATE**

The Undersigned agrees to execute all the features of the Approved Final Forest Conservation Plan No. 820210080, including financial bonding, forest planting, maintenance, and all other applicable agreements.

Developer's Name: WILGUS/MONTROSE ASSOCIATES, LLC  
 Richard Cohen, Owner/Partner

Address: 7811 MONTROSE ROAD, SUITE 200, POTOMAC, MD 20854  
 Phone: 301-369-1500

Signature: \_\_\_\_\_

**SOLTESZ, INC.**

Rockville Office  
 2 Research Place, Suite 100  
 Rockville, MD 20850  
 P. 301.948.2750 F. 301.948.9067

Rockville  
 Lanham  
 Waldorf  
 Leonardtown  
 Frederick  
 Soltesz DC, LLC

www.soltesz.com

NO.	DATE	DESIGNED	BY	DATE
1	OCTOBER 2020	KDL		

**MISS UTILITY NOTE**

INFORMATION CONCERNING EXISTING UNDERGROUND UTILITIES WAS OBTAINED FROM AVAILABLE RECORDS. THE CONTRACTOR MUST DETERMINE THE EXACT LOCATION AND ELEVATION OF ALL EXISTING UTILITIES AND UTILITIES ORIGINATING FROM TEST PITS BY HAND, WELL IN ADVANCE OF THE START OF EXCAVATION. CONTACT "MISS UTILITY" AT 1-800-261-7777 48 HOURS PRIOR TO THE START OF EXCAVATION. IF CLEARANCES ARE LESS THAN SHOWN ON THIS PLAN OR TWELVE (12) INCHES, WHICHEVER IS LESS, CONTACT THE ENGINEER AND THE UTILITY COMPANY BEFORE PROCEEDING WITH CONSTRUCTION. CLEARANCES LESS THAN NOTED MAY REQUIRE REVISIONS TO THIS PLAN.

**OWNER/DEVELOPER/APPLICANT**

WILGUS/MONTROSE ASSOCIATES, LLC  
 7811 MONTROSE ROAD  
 SUITE 200  
 POTOMAC, MD 20854  
 PHONE: (301) 369-1500  
 ROCKING@WILCO.COM  
 RICHARD COHEN

MAP	ADC	GRID	5285
TAX MAP	G062	ZONING CATEGORY	CR-2B (C-1A, C-1A.1, C-2B, C-2B.1, C-2B.2, C-2B.3, C-2B.4, C-2B.5)
WBCS 200 SHEET	215 NW 06	SITE DATUM	HORIZONTAL: NAD83 VERTICAL: NAD83



**FOREST CONSERVATION PLAN - TREE/FOREST REMOVAL PLAN**

**FINAL FOREST CONSERVATION PLAN  
 NORTHPARK AT MONTROSE  
 (FORMERLY WILGUS TRACT)**

**# 820210080**

ROCKVILLE (4TH) ELECTION DISTRICT, MONTGOMERY COUNTY, MARYLAND

**SHEET F1.2 OF 6**

PROJECT NO. 1325-02-01