

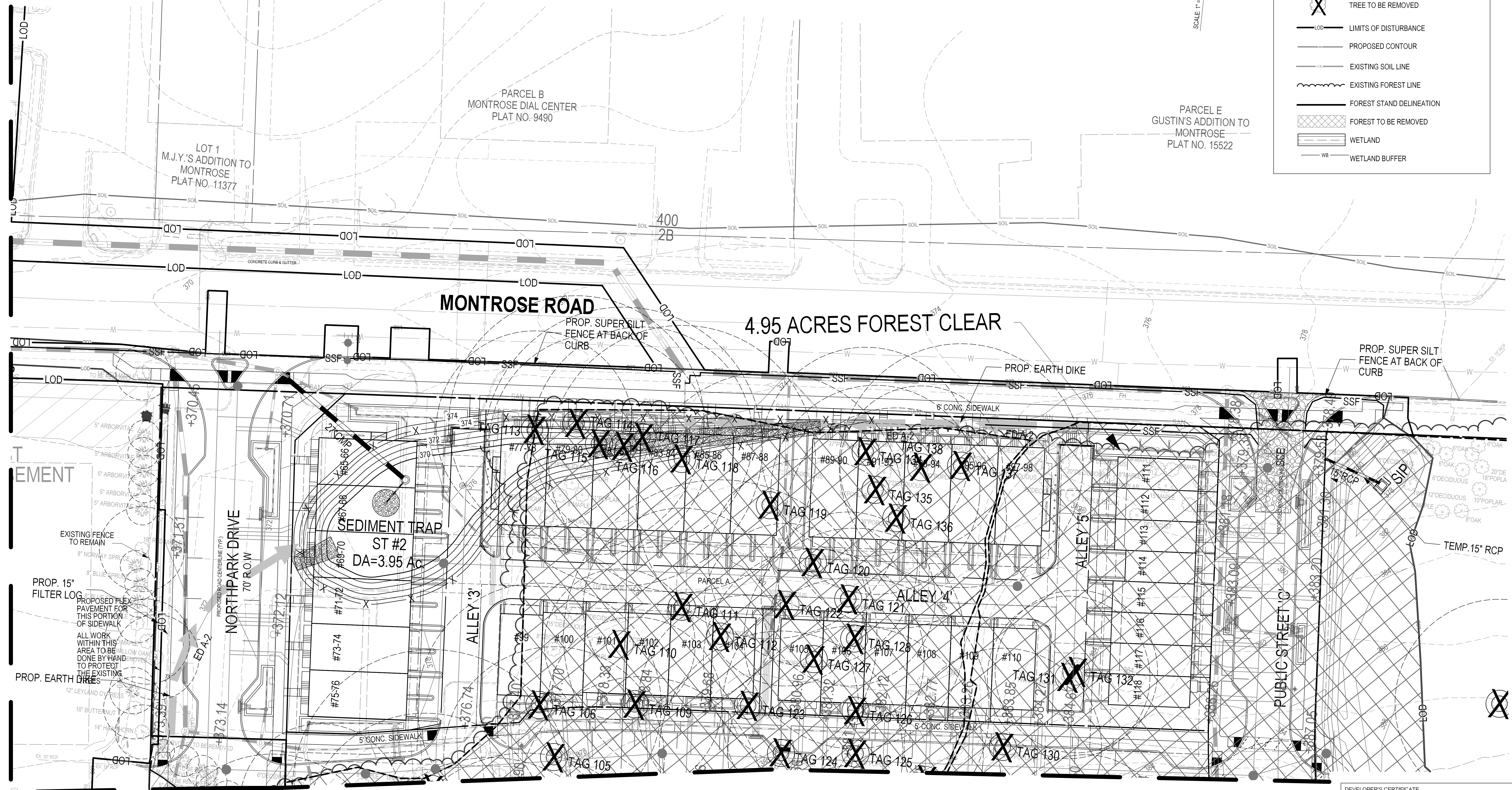
The original of this drawing document was prepared by Soltesz, Inc. (SOLTESZ). This document was not obtained directly from SOLTESZ, Inc. (SOLTESZ). If this document was not obtained directly from SOLTESZ, Inc. (SOLTESZ), it was transmitted electronically, SOLTESZ cannot guarantee that unauthorized changes and/or alterations were not made by others. If verification of the information contained herein is needed, contact should be made directly with SOLTESZ. SOLTESZ makes no warranties, express or implied, concerning the accuracy of any information that has been transmitted by electronic means.

PLANNING DEPARTMENT USE ONLY (E-PLANS)

**LEGEND:**

- 
- 
- 
- 
- 
- 
- 
- 
- 
- 
- 

SCALE 1" = 20'



**DEVELOPER'S CERTIFICATE**

The Undersigned agrees to execute all the features of the Approved Final Forest Conservation Plan No. 820210080, including financial bonding, forest planting, maintenance, and all other applicable agreements.

Developer's Name: WILGUS MONTROSE ASSOCIATES, LLC  
 Address: 7811 MONTROSE ROAD, SUITE 200 POTOMAC, MD 20854  
 Phone: 301-369-1500  
 Signature: \_\_\_\_\_



**SOLTESZ, INC.**

Rockville Office  
 2 Research Place, Suite 100  
 Rockville, MD 20850  
 P. 301.948.2750 F. 301.948.9067

NO.	DATE	CAO STANDARDS VERSION	REVISIONS	BY	DATE
DESIGNED:	OCTOBER 2020	18 - NCS			
TECHNICIAN:	KDL				
CHECKED:					

**MISS UTILITY NOTE**

INFORMATION CONCERNING EXISTING UNDERGROUND UTILITIES WAS OBTAINED FROM AVAILABLE RECORDS. THE CONTRACTOR MUST DETERMINE THE EXACT LOCATION AND ELEVATION OF ALL EXISTING UTILITIES AND UTILITIES ORIGINATING FROM EXISTING TEST PITS BY HAND, WELL IN ADVANCE OF THE START OF EXCAVATION. CONTACT MISS UTILITY AT 1-800-251-7777. 48 HOURS PRIOR TO THE START OF EXCAVATION, IF CLEARANCES ARE LESS THAN SHOWN ON THIS PLAN OR TWELVE (12) INCHES, WHICHEVER IS LESS, CONTACT THE ENGINEER AND THE UTILITY COMPANY BEFORE PROCEEDING WITH CONSTRUCTION. CLEARANCES LESS THAN NOTED MAY REQUIRE REVISIONS TO THIS PLAN.

**OWNER/DEVELOPER/APPLICANT**

WILGUS MONTROSE ASSOCIATES, LLC  
 7811 MONTROSE ROAD  
 SUITE 200  
 POTOMAC, MD 20854  
 PHONE: (301) 369-1500  
 ROCKING@WILGUS.COM  
 RICHARD COHEN

MAP	ADC	GRID	5285
TAX MAP	G002	ZONING CATEGORY:	CR-20 (C-10, C-15, C-20, C-25, C-30, C-35, C-40, C-45, C-50)
WBCS 200 SHEET	215 NW 06	SITE DATUM:	HORIZONTAL: NAD83 VERTICAL: NAD83



**FOREST CONSERVATION PLAN - TREE/FOREST REMOVAL PLAN**

**FINAL FOREST CONSERVATION PLAN  
 NORTHPARK AT MONTROSE  
 (FORMERLY WILGUS TRACT)**

# 820210080

ROCKVILLE (4TH) ELECTION DISTRICT, MONTGOMERY COUNTY, MARYLAND

SHEET **F1.3**  
 OF **6**

PROJECT NO.  
 1325-02-01