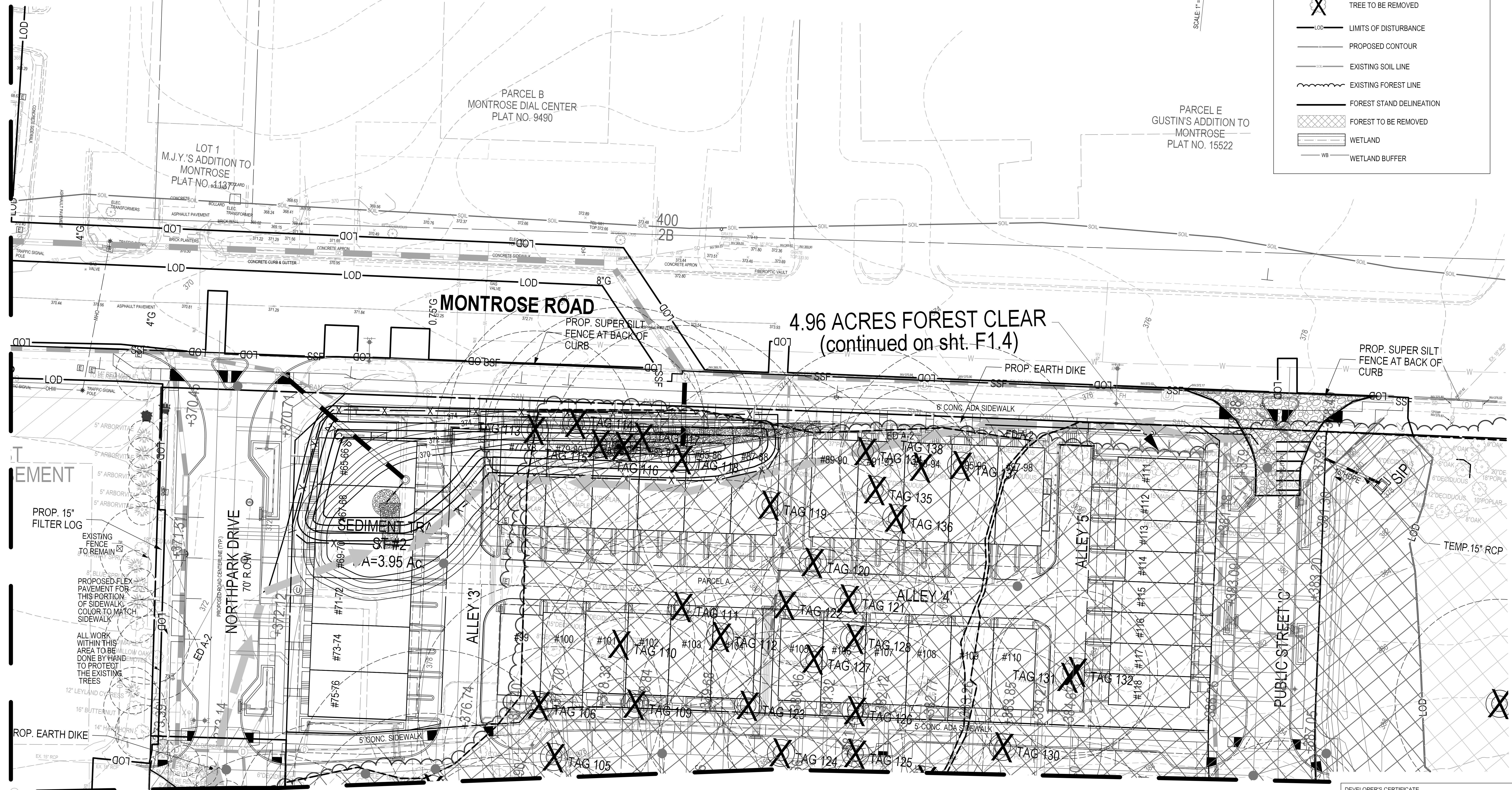
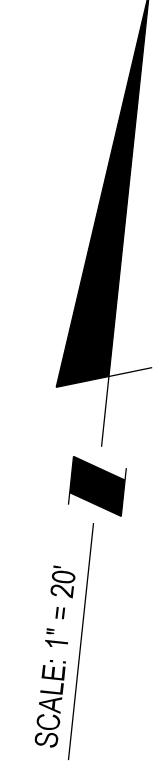


The original of this drawing document was prepared by Soltesz, Inc. (SOLTESZ). This document was not obtained directly from SOLTESZ, Inc. (SOLTESZ). If this document was not obtained directly from SOLTESZ, Inc. (SOLTESZ), it was transmitted electronically, SOLTESZ cannot guarantee that unauthorized changes and/or alterations were not made by others. If verification of the information contained herein is needed, contact should be made directly with SOLTESZ. SOLTESZ makes no warranty, express or implied, concerning the accuracy of any information that has been transmitted by electronic means.

PLANNING DEPARTMENT USE ONLY (E-PLANS)

LEGEND:

-
-
-
-
-
-
-
-
-
-
-



PROP. 15" FILTER LOG

EXISTING FENCE TO REMAIN

PROPOSED FLEX PAVEMENT FOR THIS PORTION OF SIDEWALK COLOR TO MATCH SIDEWALK

ALL WORK WITHIN THIS AREA TO BE DONE BY HAND TO PROTECT THE EXISTING TREES

12" LEYLAND CYPRESS

16" BUTTERNUT

14" HAWTHORN

PROP. EARTH DIKE

SEDIMENT TRAP

ST #2

A=3.95 Ac

4.96 ACRES FOREST CLEAR
(continued on sht. F1.4)

PROP. SUPER SILT FENCE AT BACK OF CURB

MATCHLINE SHEET F1.2

MATCHLINE SHEET F1.4



DEVELOPER'S CERTIFICATE

The Undersigned agrees to execute all the features of the Approved Final Forest Conservation Plan No. 820210080, including financial bonding, forest planting, maintenance, and all other applicable agreements.

Developer's Name: WILGUS MONTROSE ASSOCIATES, LLC RICHARD COHEN, CORPORA PERSON

Address: 7811 MONTROSE ROAD, SUITE 200, POTOMAC, MD 20854

Phone: 301-369-1500

Signature: _____

SOLTESZ, INC.

Rockville
Lanham
Waldorf
Leonardtown
Frederick
Soltesz DC, LLC

ROCKVILLE OFFICE
2 Research Place, Suite 100
Rockville, MD 20850
P. 301.948.2750 F. 301.948.9067

www.soltesz.com

NO.	DATE	CAO STANDARDS VERSION	REVISIONS	BY	DATE
DESIGNED:	OCTOBER 2020				
TECHNICIAN:	KDL		V8 - NCS		
TECHNICIAN:	JW				
CHECKED:				KDL	

MISS UTILITY NOTE

INFORMATION CONCERNING EXISTING UNDERGROUND UTILITIES WAS OBTAINED FROM AVAILABLE RECORDS; THE CONTRACTOR MUST DETERMINE THE EXACT LOCATION AND ELEVATION OF ALL EXISTING UTILITIES AND UTILITY CROSSINGS BY ENGINEERING TEST FITS BY HAND, WELL IN ADVANCE OF THE START OF EXCAVATION. CONTACT "MISS UTILITY" AT 1-800-261-7777, 48 HOURS PRIOR TO THE START OF EXCAVATION. IF CLEARANCES ARE LESS THAN SHOWN ON THIS PLAN OR TWELVE (12) INCHES, WHOEVER IS LESS, CONTACT THE ENGINEER AND THE UTILITY COMPANY BEFORE PROCEEDING WITH CONSTRUCTION. CLEARANCES LESS THAN NOTED MAY REQUIRE REVISIONS TO THIS PLAN.

OWNER/DEVELOPER/APPLICANT

WILGUS MONTROSE ASSOCIATES, LLC
7811 MONTROSE ROAD
SUITE 200
POTOMAC, MD 20854
PHONE: (301) 369-1500
RCHEN@WILGUS.COM
RICHARD COHEN

MAP	ADC	GRID	5285
TAX MAP	G002	ZONING CATEGORY:	CR-30 (C-1), R-10, R-20, CR-30 (C-2), R-10, R-20
WBCS 200 SHEET		CR-30 (C-2), R-10, R-20	
SITE NUMBER	215 NW 06		
HORIZONTAL:	NAD83		
VERTICAL:	NAD83		



FOREST CONSERVATION PLAN - TREE/FOREST REMOVAL PLAN

**FINAL FOREST CONSERVATION PLAN
NORTH PARK AT MONTROSE
(FORMERLY WILGUS TRACT)**

820210080

ROCKVILLE (4TH) ELECTION DISTRICT, MONTGOMERY COUNTY, MARYLAND

PROJECT NO. 1325-02-01

SHEET F1.3 OF 6