

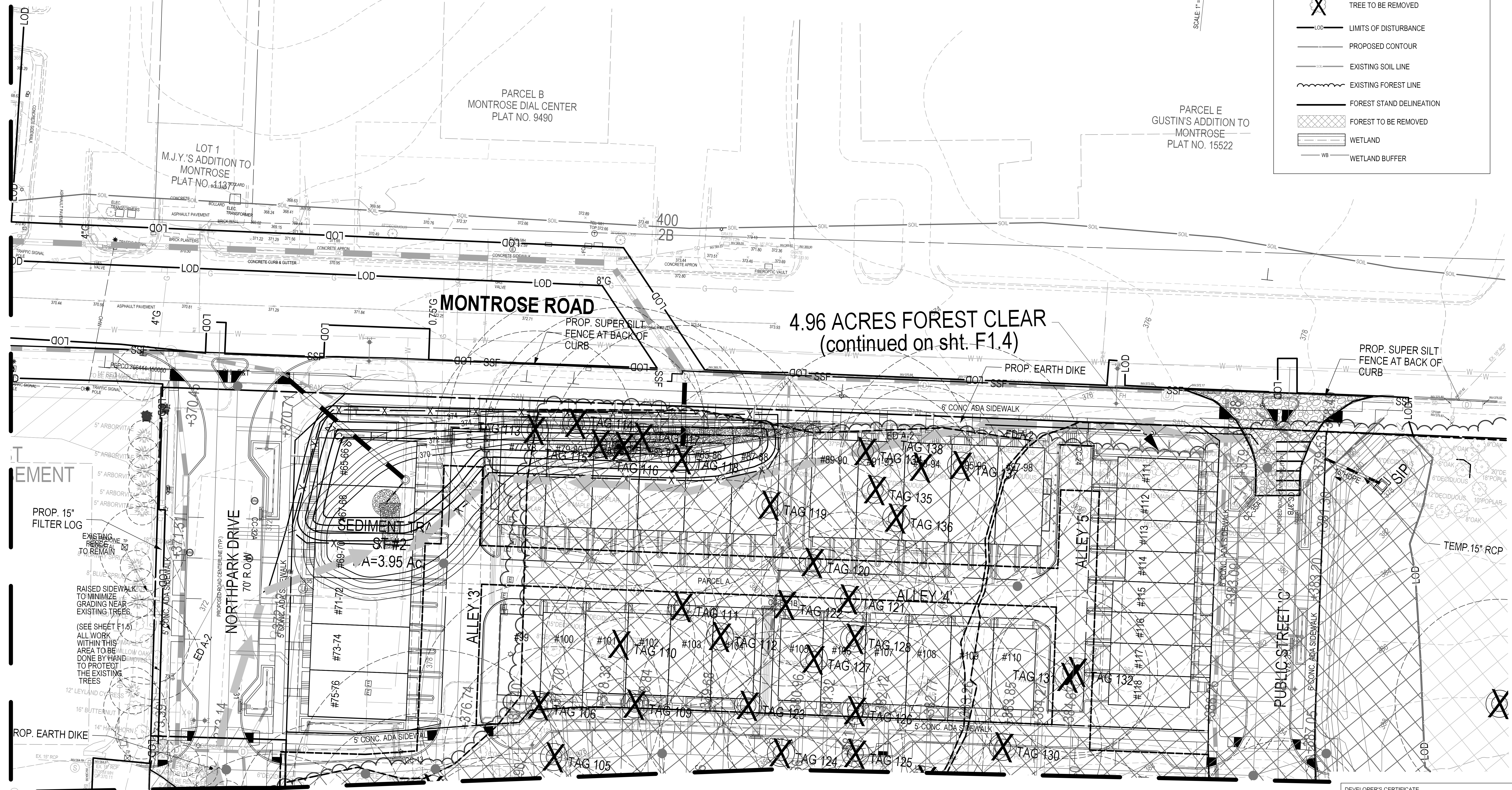
The original of this drawing document was prepared by Soltesz, Inc. (SOLTESZ). This document was not obtained directly from SOLTESZ, Inc. (SOLTESZ). It is a copy of the information contained herein. It is not intended to be used for any purpose other than that for which it was prepared. SOLTESZ, Inc. (SOLTESZ) makes no warranty, express or implied, concerning the accuracy of any information that has been transmitted by electronic means.

PLANNING DEPARTMENT USE ONLY (E-PLANS)

LEGEND:

-
-
-
-
-
-
-
-
-
-
-

SCALE 1" = 20'



PROP. 15" FILTER LOG

RAISED SIDEWALKS TO MINIMIZE GRADING NEAR EXISTING TREES (SEE SHEET F1.6) ALL WORK WITHIN THIS AREA TO BE DONE BY HAND TO PROTECT THE EXISTING TREES

SEDIMENT TRAP

ST #2

A=3.95 AC

4.96 ACRES FOREST CLEAR (continued on sht. F1.4)

PROP. SUPER SILT FENCE AT BACK OF CURB

PROP. EARTH DIKE

MATCHLINE SHEET F1.2

MATCHLINE SHEET F1.4

DEVELOPER'S CERTIFICATE

The Undersigned agrees to execute all the features of the Approved Final Forest Conservation Plan No. 820210080, including financial bonding, forest planting, maintenance, and all other applicable agreements.

Developer's Name: **WILGUS MONTROSE ASSOCIATES, LLC** **RICHARD COHEN**
CONTRACT PERSON

Address: 7811 MONTROSE ROAD, SUITE 200 POTOMAC, MD 20854

Phone: 301-369-1500

Signature: _____



SOLTESZ, INC.

Rockville Office
 2 Research Place, Suite 100
 Rockville, MD 20850
 P. 301.948.2750 F. 301.948.9067

Rockville
 Lanham
 Waldorf
 Leonardtown
 Frederick
 Soltesz DC, LLC

www.soltesz.com

NO.	DATE	CAO STANDARDS VERSION	REVISIONS	BY	DATE
DESIGNED:	OCTOBER 2020	18 - NCS			
TECHNICIAN:	KDL				
CHECKED:					

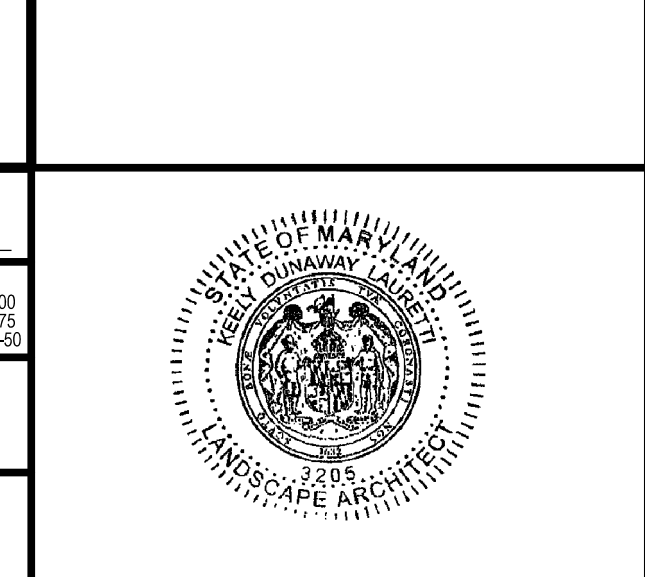
MISS UTILITY NOTE

INFORMATION CONCERNING EXISTING UNDERGROUND UTILITIES WAS OBTAINED FROM AVAILABLE RECORDS. THE CONTRACTOR MUST DETERMINE THE EXACT LOCATION AND ELEVATION OF ALL EXISTING UTILITIES AND UTILITY CROSSINGS BY ENGINEER TEST FITS BY HAND, WELL IN ADVANCE OF THE START OF EXCAVATION. CONTACT "MISS UTILITY" AT 1-800-261-7777. 48 HOURS PRIOR TO THE START OF EXCAVATION, IF CLEARANCES ARE LESS THAN SHOWN ON THIS PLAN OR TWELVE (12) INCHES, WHOEVER IS LESS, CONTACT THE ENGINEER AND THE UTILITY COMPANY BEFORE PROCEEDING WITH CONSTRUCTION. CLEARANCES LESS THAN NOTED MAY REQUIRE REVISIONS TO THIS PLAN.

OWNER/DEVELOPER/APPLICANT

WILGUS MONTROSE ASSOCIATES, LLC
 7811 MONTROSE ROAD
 SUITE 200
 POTOMAC, MD 20854
 PHONE: (301) 369-1500
 ROCKEN@WILGUS.COM
 RICHARD COHEN

MAP	ADC	GRID	5285
TAX MAP	G002	ZONING CATEGORY:	CR-30 (S.U. 10, 15, 20, 30) (CR-30) (C.O. 10, 15, 20, 30)
WBCS 200 SHEET	215 NW 06		
SITE DATUM:	HORIZONTAL: NAD83	VERTICAL:	NAD83



FOREST CONSERVATION PLAN - TREE/FOREST REMOVAL PLAN

FINAL FOREST CONSERVATION PLAN
NORTH PARK AT MONTROSE
(FORMERLY WILGUS TRACT)

820210080

ROCKVILLE (4TH) ELECTION DISTRICT, MONTGOMERY COUNTY, MARYLAND

SHEET **F1.3**
 OF **6**

PROJECT NO. 1325-02-01