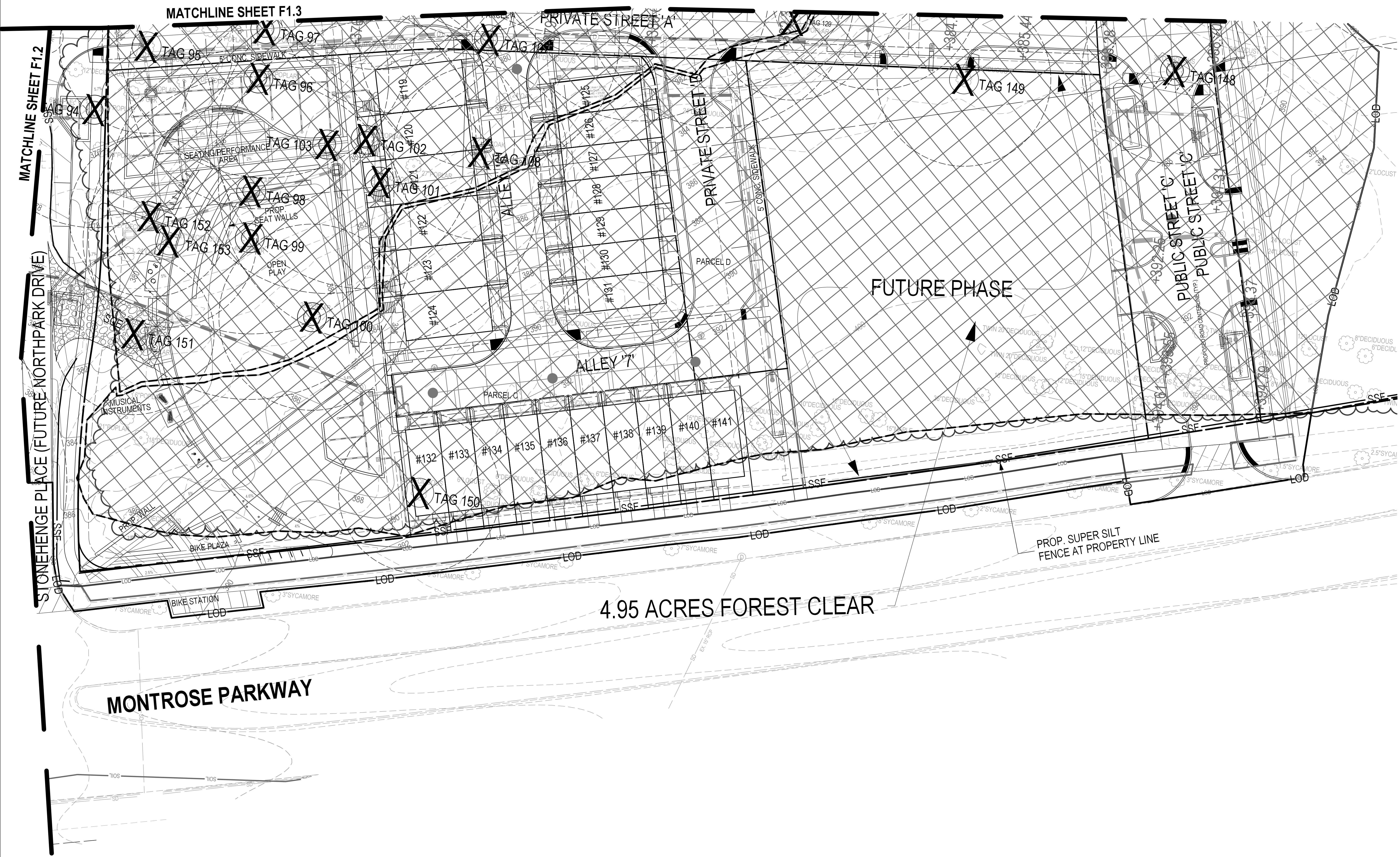


PLANNING DEPARTMENT USE ONLY (E-PLANS)

LEGEND:

-
-
-
-
-
-
-
-
-
-
-

SCALE: 1" = 20'



4.95 ACRES FOREST CLEAR

PROP. SUPER SILT FENCE AT PROPERTY LINE

DEVELOPER'S CERTIFICATE

The Undersigned agrees to execute all the features of the Approved Final Forest Conservation Plan No. 820210080, including financial bonding, forest planning, maintenance, and all other applicable agreements.

Developer's Name: WILGUS/MONTROSE ASSOCIATES LLC
 Company: RICHARD COHEN CONSULTING PARTNERSHIP

Address: 7811 MONTROSE ROAD, SUITE 200 POTOMAC, MD 20854
 Phone: 301-369-1500

Signature: _____

SOLTESZ, INC.

Rockville Office
 2 Research Place, Suite 100
 Rockville, MD 20850
 P. 301.948.2750 F. 301.948.9067

Rockville
 Lanham
 Waldorf
 Leonardtown
 Frederick
 Soltesz DC, LLC

www.soltesz.com

NO.	DATE	DESIGNED	CAO STANDARD VERSION	REVISIONS	BY	DATE
1	OCTOBER 2020	KDL	V8 - R03			
			TECHNICIAN: JW			
			CHECKED: KDL			

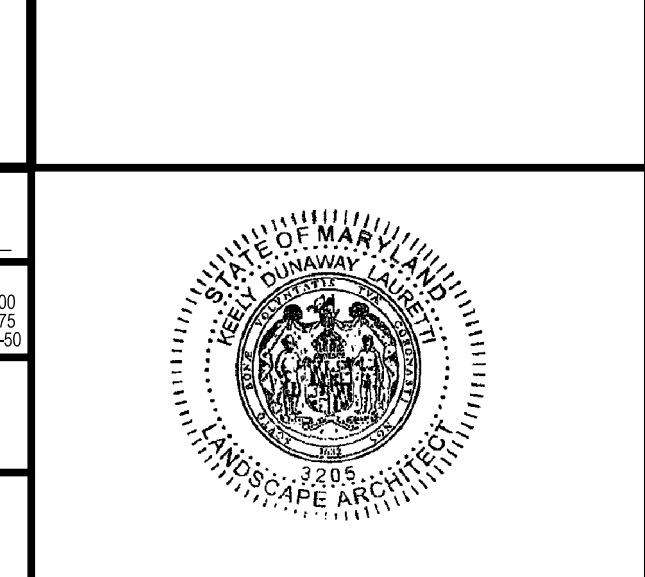
MISS UTILITY NOTE

INFORMATION CONCERNING EXISTING UNDERGROUND UTILITIES WAS OBTAINED FROM AVAILABLE RECORDS; THE CONTRACTOR MUST DETERMINE THE EXACT LOCATION AND ELEVATION OF ALL EXISTING UTILITIES AND UTILITY CROSSINGS BY ENGINEER TEST PITS BY HAND, WELL IN ADVANCE OF THE START OF EXCAVATION. CONTACT "MISS UTILITY" AT 1-800-251-7777 48 HOURS PRIOR TO THE START OF EXCAVATION. IF CLEARANCES ARE LESS THAN SHOWN ON THIS PLAN OR TWELVE (12) INCHES, WHOEVER IS LESS, CONTACT THE ENGINEER AND THE UTILITY COMPANY BEFORE PROCEEDING WITH CONSTRUCTION. CLEARANCES LESS THAN NOTED MAY REQUIRE REVISIONS TO THIS PLAN.

OWNER/DEVELOPER/APPLICANT

WILGUS/MONTROSE ASSOCIATES, LLC
 7811 MONTROSE ROAD
 SUITE 200
 POTOMAC, MD 20854
 PHONE: (301) 369-1500
 ROCKEN@WILLCO.COM
 RICHARD COHEN

MAP	ADC	GRID	5285
TAX MAP	GC02	ZONING CATEGORY	CR-20 (C-10, M-10, R-20, CR-20, C-20, R-20, H-20)
WBCS 200 SHEET	215 NW 06		
SITE DATUM	HORIZONTAL: NAD83		
	VERTICAL: NAD83		



FOREST CONSERVATION PLAN - TREE/FOREST REMOVAL PLAN

**FINAL FOREST CONSERVATION PLAN
 NORTHPARK AT MONTROSE
 (FORMERLY WILGUS TRACT)**

820210080

ROCKVILLE (4TH) ELECTION DISTRICT, MONTGOMERY COUNTY, MARYLAND

SHEET	F1.4
OF	6
PROJECT NO.	1325-02-01