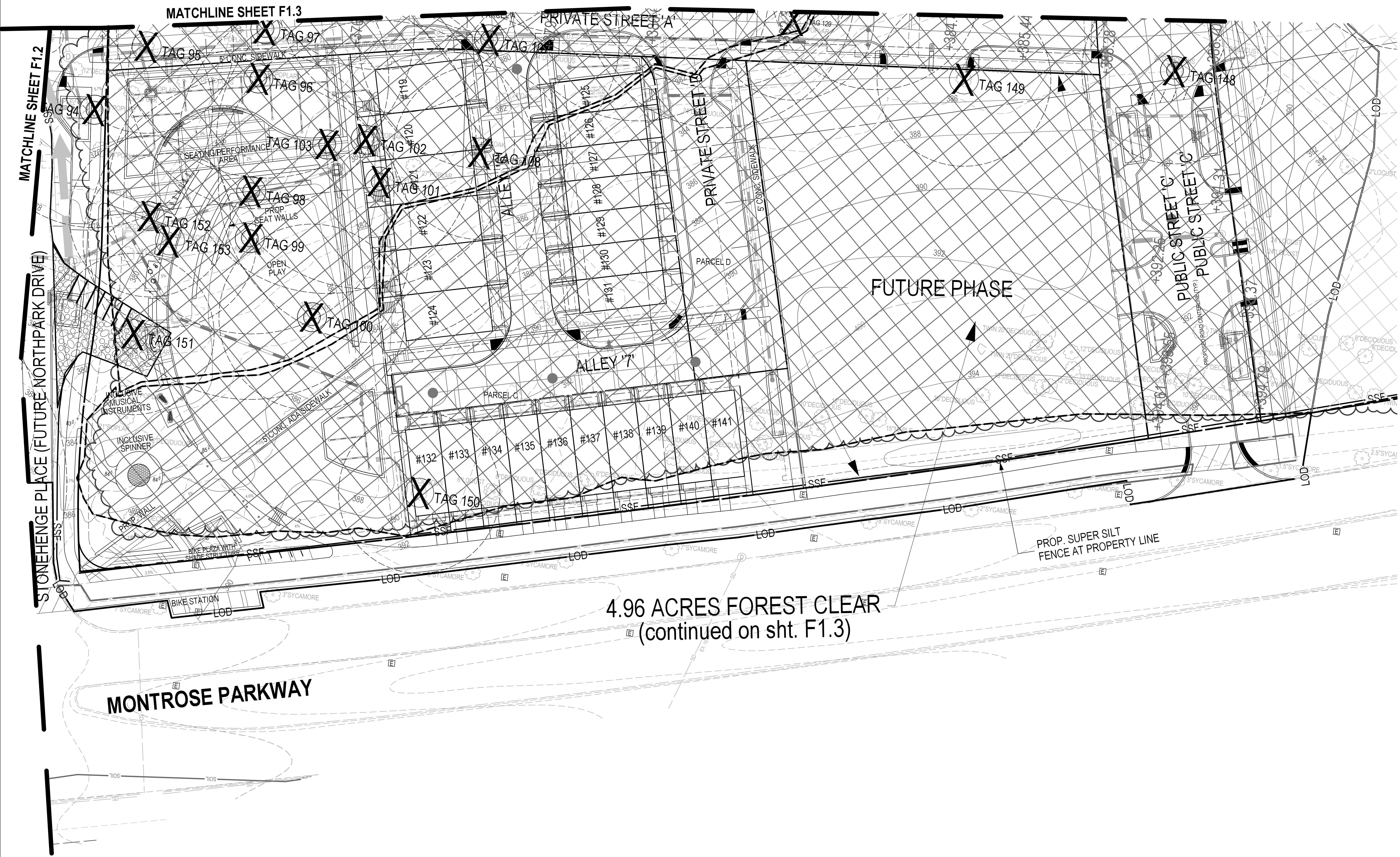


PLANNING DEPARTMENT USE ONLY (E-PLANS)

LEGEND:

-
-
-
-
-
-
-
-
-
-
-

SCALE: 1" = 20'



4.96 ACRES FOREST CLEAR
(continued on sht. F1.3)

DEVELOPER'S CERTIFICATE

The Undersigned agrees to execute all the features of the Approved Final Forest Conservation Plan No. 820210080, including financial bonding, forest planning, maintenance, and all other applicable agreements.

Developer's Name: WILGUS/MONTROSE ASSOCIATES LLC
 Address: 7811 MONTROSE ROAD, SUITE 200 POTOMAC, MD 20854
 Phone: 301-369-1500
 Signature: _____

SOLTESZ, INC.

Rockville Office
 2 Research Place, Suite 100
 Rockville, MD 20850
 P. 301.948.2750 F. 301.948.9067

NO.	DATE	DESIGNED	CAO STANDARD VERSION	REVISIONS	BY	DATE
1	OCTOBER 2020	KDL	V8 - RCS			

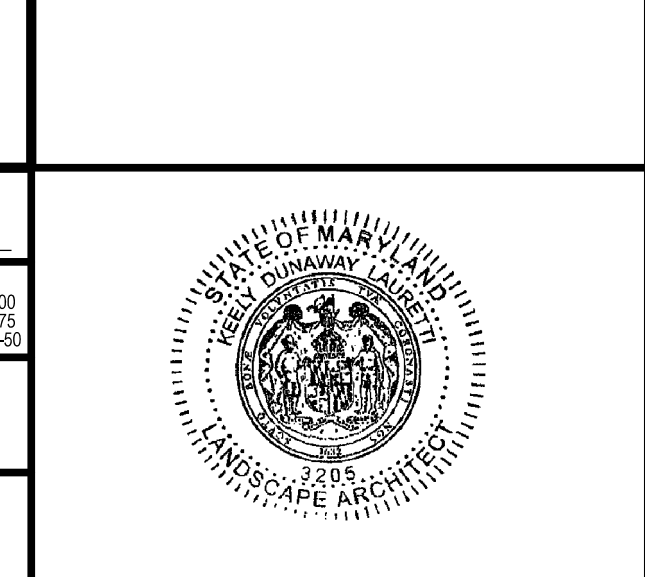
MISS UTILITY NOTE

INFORMATION CONCERNING EXISTING UNDERGROUND UTILITIES WAS OBTAINED FROM AVAILABLE RECORDS; THE CONTRACTOR MUST DETERMINE THE EXACT LOCATION AND ELEVATION OF ALL EXISTING UTILITIES AND UTILITY CROSSINGS BY ENGINEERING TEST PITS BY HAND, WELL IN ADVANCE OF THE START OF EXCAVATION. CONTACT "MISS UTILITY" AT 1-800-261-7777 48 HOURS PRIOR TO THE START OF EXCAVATION. IF CLEARANCES ARE LESS THAN SHOWN ON THIS PLAN OR TWELVE (12) INCHES, WHOEVER IS LESS, CONTACT THE ENGINEER AND THE UTILITY COMPANY BEFORE PROCEEDING WITH CONSTRUCTION. CLEARANCES LESS THAN NOTED MAY REQUIRE REVISIONS TO THIS PLAN.

OWNER/DEVELOPER/APPLICANT

WILGUS/MONTROSE ASSOCIATES, LLC
 7811 MONTROSE ROAD
 SUITE 200
 POTOMAC, MD 20854
 PHONE: (301) 369-1500
 ROCKEN@WILLCO.COM
 RICHARD COHEN

MAP	ADC	GRID	5285
TAX MAP	G002	ZONING CATEGORY	CR-20 (C-1A, M-1A, R-20)
WBCS 200 SHEET	215 NW 06	DATE	08/14/2020
SITE DATUM	HORIZONTAL: NAD83	VERTICAL:	NAD83



FOREST CONSERVATION PLAN - TREE/FOREST REMOVAL PLAN

**FINAL FOREST CONSERVATION PLAN
NORTH PARK AT MONTROSE
(FORMERLY WILGUS TRACT)**

820210080

ROCKVILLE (4TH) ELECTION DISTRICT, MONTGOMERY COUNTY, MARYLAND

SHEET	F1.4
OF	6
PROJECT NO.	1325-02-01

The original of this drawing document was prepared by Soltesz, Inc. (SOLTESZ). This document was not obtained directly from SOLTESZ, Inc. SOLTESZ cannot guarantee that unauthorized changes and/or alterations were not made by others. If verification of the information contained herein is needed, contact should be made directly with SOLTESZ. SOLTESZ makes no warranties, express or implied, concerning the accuracy of any information that has been transmitted by electronic means.