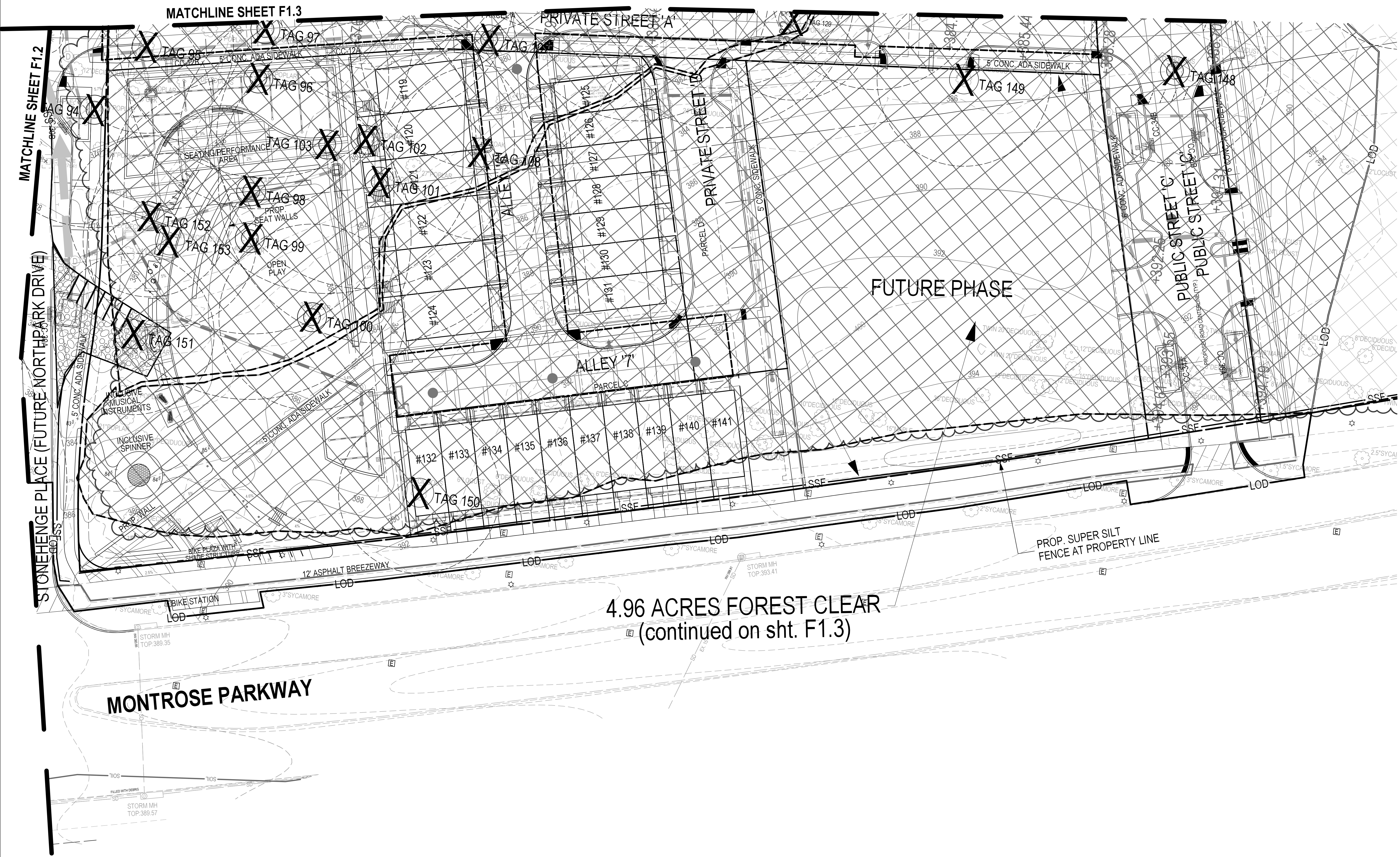


PLANNING DEPARTMENT USE ONLY (E-PLANS)

**LEGEND:**

- SPECIMEN TREE (GREATER THAN OR EQUAL TO 30' DBH)
- SIGNIFICANT TREE (BETWEEN 24-29.9' DBH)
- TREE TO BE REMOVED
- LIMITS OF DISTURBANCE
- PROPOSED CONTOUR
- EXISTING SOIL LINE
- EXISTING FOREST LINE
- FOREST STAND DELINEATION
- FOREST TO BE REMOVED
- WETLAND
- WETLAND BUFFER

SCALE: 1" = 20'



4.96 ACRES FOREST CLEAR  
(continued on sht. F1.3)

**DEVELOPER'S CERTIFICATE**  
 The Undersigned agrees to execute all the features of the Approved Final Forest Conservation Plan No. 820210080, including financial bonding, forest planning, maintenance, and all other applicable agreements.  
 Developer's Name: WILGUS/MONTROSE ASSOCIATES LLC  
 Address: 7811 MONTROSE ROAD, SUITE 200 POTOMAC, MD 20854  
 Phone: 301-369-1500  
 Signature: \_\_\_\_\_

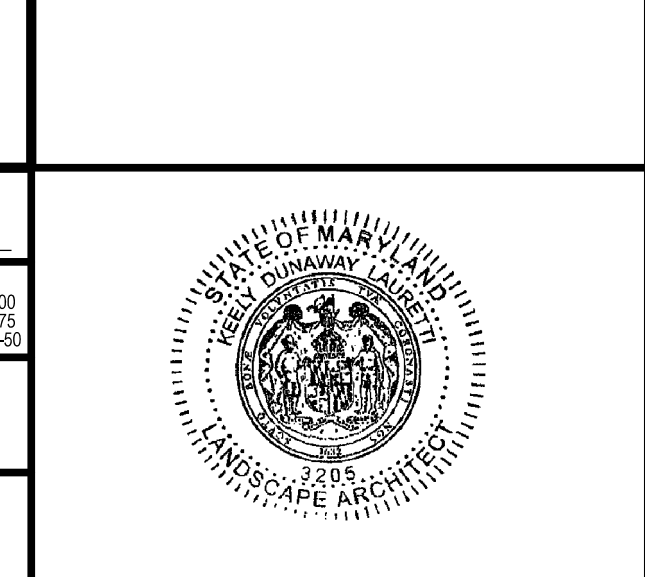
**SOLTESZ, INC.**  
 Rockville Office  
 2 Research Place, Suite 100  
 Rockville, MD 20850  
 P. 301.948.2750 F. 301.948.9067  
 www.soltesz.com

| NO. | DATE         | DESIGNED | CAO STANDARD | VERSION | REVISIONS | BY | DATE |
|-----|--------------|----------|--------------|---------|-----------|----|------|
| 1   | OCTOBER 2020 | KDL      | 18           | NCS     |           |    |      |

**MISS UTILITY NOTE**  
 INFORMATION CONCERNING EXISTING UNDERGROUND UTILITIES WAS OBTAINED FROM AVAILABLE RECORDS. THE CONTRACTOR MUST DETERMINE THE EXACT LOCATION AND ELEVATION OF ALL EXISTING UTILITIES AND UTILITY CROSSINGS BY ENGINEER TEST FITS BY HAND, WELL IN ADVANCE OF THE START OF EXCAVATION. CONTACT "MISS UTILITY" AT 1-800-261-7777, 48 HOURS PRIOR TO THE START OF EXCAVATION. IF CLEARANCES ARE LESS THAN SHOWN ON THIS PLAN OR TWELVE (12) INCHES, WHOEVER IS LESS, CONTACT THE ENGINEER AND THE UTILITY COMPANY BEFORE PROCEEDING WITH CONSTRUCTION. CLEARANCES LESS THAN NOTED MAY REQUIRE REVISIONS TO THIS PLAN.

**OWNER/DEVELOPER/APPLICANT**  
 WILGUS/MONTROSE ASSOCIATES, LLC  
 7811 MONTROSE ROAD  
 SUITE 200  
 POTOMAC, MD 20854  
 PHONE: (301) 369-1500  
 ROCKEN@WILCO.COM  
 RICHARD COHEN

|                |           |                 |   |
|----------------|-----------|-----------------|---|
| MAP            | ADC       | GRID            | 5285  |
| TAX MAP        | G002      | ZONING CATEGORY | CR-20 (C-10, R-10, R-20, CR-20, C-20, R-20, R-20) |
| WESC 200 SHEET | 215 NW 06 | SITE DATUM      | HORIZONTAL: NAD83<br>VERTICAL: NAD83              |



**FOREST CONSERVATION PLAN - TREE/FOREST REMOVAL PLAN**

**FINAL FOREST CONSERVATION PLAN  
NORTH PARK AT MONTROSE  
(FORMERLY WILGUS TRACT)**

# 820210080

ROCKVILLE (4TH) ELECTION DISTRICT, MONTGOMERY COUNTY, MARYLAND

**SHEET F1.4 OF 6**

PROJECT NO. 1325-02-01

The original of this drawing document was prepared by Soltesz, Inc. (SOLTESZ). This document was not obtained directly from SOLTESZ, Inc. (SOLTESZ), and it was transmitted electronically. SOLTESZ cannot guarantee that unauthorized changes and/or alterations were not made by others. If verification of the information contained herein is needed, contact should be made directly with SOLTESZ. SOLTESZ makes no warranty, express or implied, concerning the accuracy of any information that has been transmitted by electronic means.