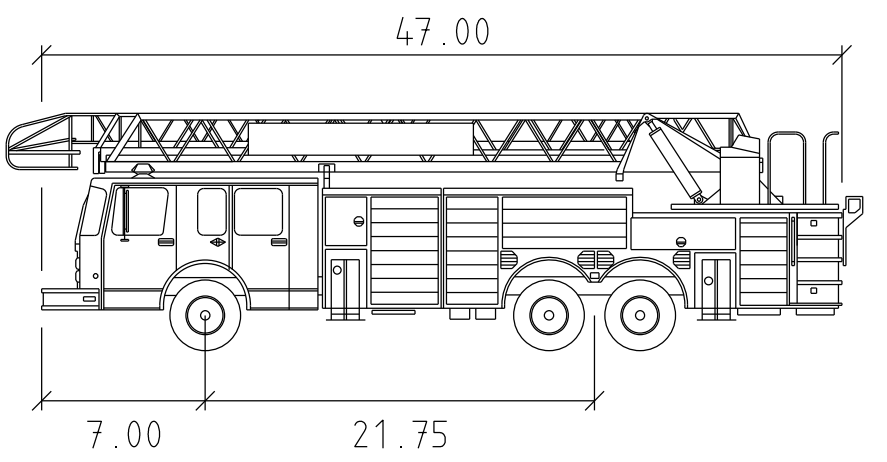


The original of this drawing document was prepared by Soltesz, Inc. (SOLTESZ). This document was not obtained directly from SOLTESZ, Inc. (SOLTESZ). SOLTESZ, Inc. (SOLTESZ) cannot guarantee that unauthorized changes and/or alterations were not made by others. If verification of the information contained herein is needed, contact should be made directly with SOLTESZ, Inc. (SOLTESZ). SOLTESZ makes no warranties, express or implied, concerning the accuracy of any information that has been transmitted by electronic means.

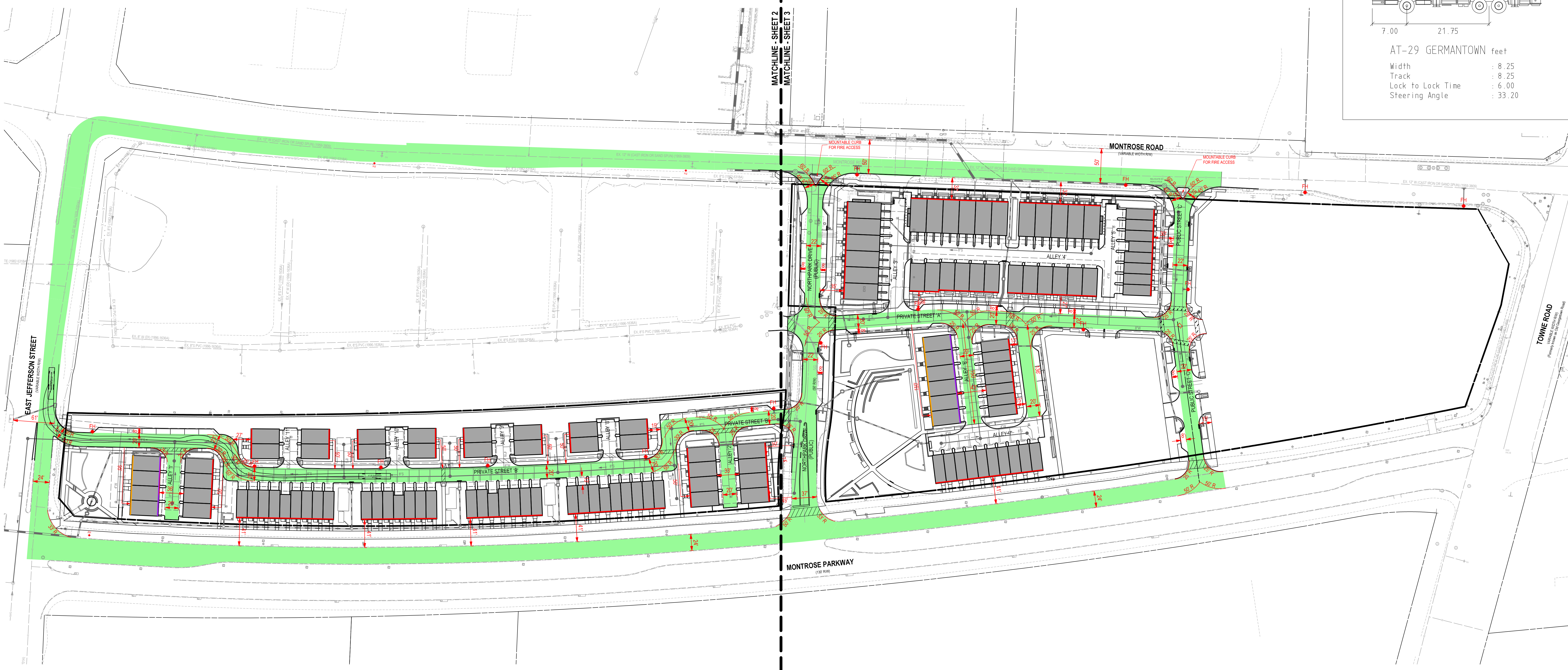
LEGEND

- FIRE ACCESS LANE
Meets apparatus loading to be no less than 85,000 lbs or meet tertiary road subgrade.
- EXISTING / PROPOSED FIRE HYDRANT
- PRIMARY BUILDING ACCESS WITHIN 50'

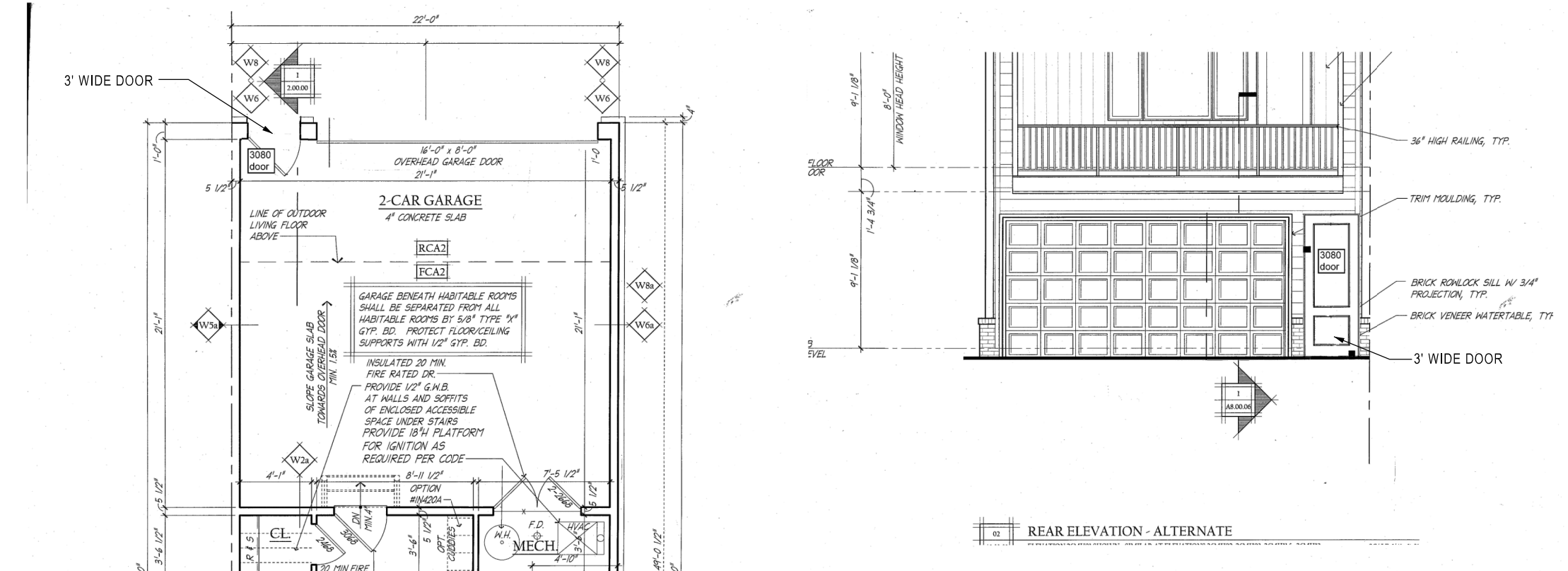


AT-29 GERMANTOWN feet
 Width : 8.25
 Track : 8.25
 Lock to Lock Time : 6.00
 Steering Angle : 33.20

SCALE: 1" = 60'



**REAR-LOAD TOWNHOUSE FIRE ACCESSIBLE 3' WIDE SIDE HINGE DOOR GARAGE ENTRY DETAIL:
(APPLIES TO UNITS WITH PRIMARY ACCESS BETWEEN 50'-150' AND SECONDARY ACCESS WITHIN 50' -
SEE BLDGS WITH PURPLE LINE DESIGNATION)**



- PRIMARY ACCESS WITHIN 50'
- PRIMARY ACCESS WITHIN 150'
- SECONDARY ACCESS WITHIN 50'

DEVELOPER'S CERTIFICATE
 The undersigned agrees to execute all the features of the Site Plan Approval No. 820210080, including Approval Conditions, Development Program, and Certified Site Plan.
 Developer's Name: WILGUS-MONTROSE ASSOCIATES LLC
 Company: RICHARD COHEN
 Address: 7811 MONTROSE ROAD, SUITE 200, POTOMAC, MD 20854
 Phone: (240) 399-1500
 Signature: _____

PROFESSIONAL CERTIFICATION
 I HEREBY CERTIFY THAT THESE DOCUMENTS WERE PREPARED OR APPROVED BY ME, AND THAT I AM A DULY LICENSED PROFESSIONAL ENGINEER UNDER THE LAWS OF THE STATE OF MARYLAND.
 LICENSE NO. 30227 EXPIRATION DATE: 05/18/2022

FIRE DEPARTMENT ACCESS OVERALL PLAN

**SITE PLAN 820210080
NORTH PARK AT MONTROSE
(FORMERLY WILGUS TRACT)**

ROCKVILLE (4TH) ELECTION DISTRICT, MONTGOMERY COUNTY, MARYLAND

SOLTESZ, INC.
 Engineering
 Surveying
 Planning
 Environmental Sciences

Rockville
 Lanham
 Waldorf
 Leonardtown
 Frederick
 Soltesz DC, LLC

NO.	DATE	DESIGNED	BY	DATE	REVISIONS
1	DECEMBER 2020	JS	TJS		18 - RCS
					ENT

MISS UTILITY NOTE
 INFORMATION CONCERNING EXISTING UNDERGROUND UTILITIES WAS OBTAINED FROM AVAILABLE RECORDS. THE CONTRACTOR MUST DETERMINE THE EXACT LOCATION AND ELEVATION OF ALL EXISTING UTILITIES AND UTILITIES OR SERVICES BY ENGINEERING TEST FITS BY HAND, WELL IN ADVANCE OF THE START OF EXCAVATION. CONTACT "MISS UTILITY" AT 1-800-261-7777. 48 HOURS PRIOR TO THE START OF EXCAVATION. IF CLEARANCES ARE LESS THAN SHOWN ON THE PLAN OR TWELVE (12) INCHES, WHOEVER IS LESS, CONTACT THE ENGINEER AND THE UTILITY COMPANY BEFORE PROCEEDING WITH CONSTRUCTION. CLEARANCES LESS THAN NOTED MAY REQUIRE REVISIONS TO THIS PLAN.

OWNER/DEVELOPER/APPLICANT
 WILGUS-MONTROSE ASSOCIATES LLC
 7811 MONTROSE ROAD
 SUITE 200
 POTOMAC, MD 20854
 PHONE: (240) 399-1500
 ROCKEN@WILGUS.COM
 RICHARD COHEN

MAP	ADC	GRID	5285
TAX MAP	G0562	ZONING CATEGORY	CR-20, CR-10, R-10, R-15, R-20, R-30, R-40, R-50, R-60, R-70, R-80, R-90, R-100, R-110, R-120, R-130, R-140, R-150, R-160, R-170, R-180, R-190, R-200, R-210, R-220, R-230, R-240, R-250, R-260, R-270, R-280, R-290, R-300, R-310, R-320, R-330, R-340, R-350, R-360, R-370, R-380, R-390, R-400, R-410, R-420, R-430, R-440, R-450, R-460, R-470, R-480, R-490, R-500, R-510, R-520, R-530, R-540, R-550, R-560, R-570, R-580, R-590, R-600, R-610, R-620, R-630, R-640, R-650, R-660, R-670, R-680, R-690, R-700, R-710, R-720, R-730, R-740, R-750, R-760, R-770, R-780, R-790, R-800, R-810, R-820, R-830, R-840, R-850, R-860, R-870, R-880, R-890, R-900, R-910, R-920, R-930, R-940, R-950, R-960, R-970, R-980, R-990, R-1000
WBSIC 200 SHEET	215 NW 06		
SITE DATUM	HORIZONTAL: NAD83		
	VERTICAL: NAD83		



SHEET 1	
PROJECT NO. 1325-02-01	