


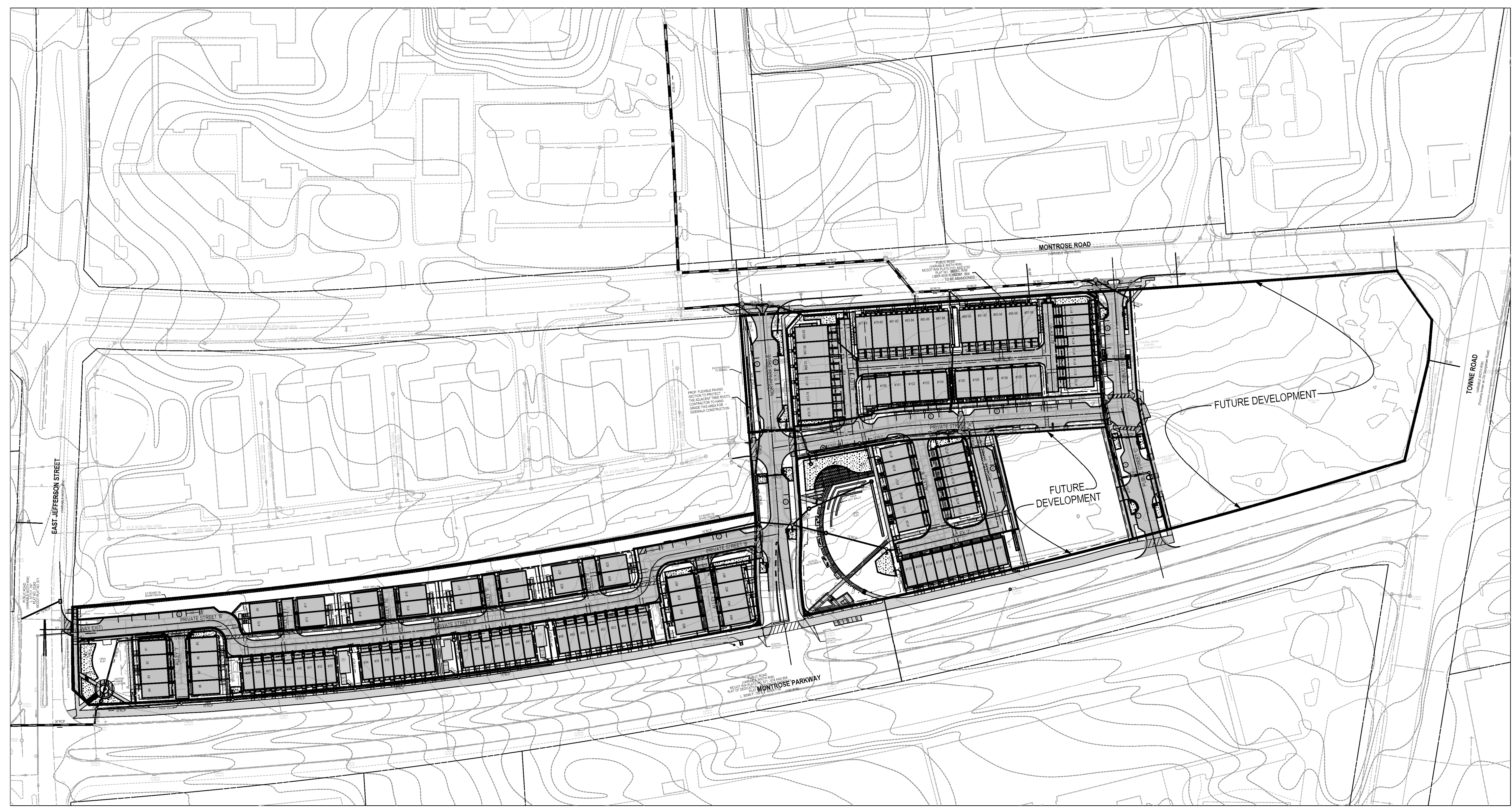
The original of this drawing document was prepared by Soltesz, Inc. (SOLTESZ). If this document was not obtained directly from SOLTESZ, and/or it was transmitted electronically, SOLTESZ cannot guarantee that unauthorized changes and/or alterations were not made by others. If verification of the information contained herein is needed, contact should be made directly with SOLTESZ. SOLTESZ makes no warranties, express or implied, concerning the accuracy of any information that has been transmitted by electronic means.

# NORTHPARK AT MONTROSE (WILGUS TRACT)

## PRELIMINARY STORM DRAIN PLANS - PHASE 1

POTOMAC (1st) ELECTION DISTRICT  
MONTGOMERY COUNTY, MARYLAND

SCALE: 1" = 100'

### SHEET INDEX

1. PRELIMINARY STORM DRAIN COVER
2. STORM DRAIN DRAINAGE AREA MAP
3. STORM DRAIN DRAINAGE AREA MAP
4. STORM DRAIN CONCEPT PLAN VIEW
5. STORM DRAIN CONCEPT PLAN VIEW
6. STORM DRAIN DETAILS



**SOLTESZ, Inc.**

Rockville Office  
2 Research Place, Suite 100  
Rockville, MD 20850  
P. 301.948.2750 F. 301.948.9067

Rockville  
Lanham  
Waldorf  
Leopoldtown  
Frederick  
Soltesz DC, LLC

www.solteszco.com

NO.	DATE	DESIGNED	CAO STANDARDS VERSION	REVISIONS	BY	DATE
	DECEMBER 2019	A.G.	V9 - NCS			

**MISS UTILITY NOTE**

INFORMATION CONCERNING EXISTING UNDERGROUND UTILITIES WAS OBTAINED FROM AVAILABLE RECORDS. THE CONTRACTOR MUST DETERMINE THE EXACT LOCATION AND ELEVATION OF ALL EXISTING UTILITIES AND UTILITY ORIGINIS BY ENGINEERING TEST PITS BY HAND, WELL IN ADVANCE OF THE START OF EXCAVATION. CONTACT "MISS UTILITY" AT 1-800-261-7777, 48 HOURS PRIOR TO THE START OF EXCAVATION. IF CLEARANCES ARE LESS THAN SHOWN ON THIS PLAN OR TWELVE (12) INCHES, WHICHEVER IS LESS, CONTACT THE ENGINEER AND THE UTILITY COMPANY BEFORE PROCEEDING WITH CONSTRUCTION. CLEARANCES LESS THAN NOTED MAY REQUIRE REVISIONS TO THIS PLAN.

**OWNER/DEVELOPER/APPLICANT**

WILGUS/MONTROSE ASSOCIATES, LLC  
7811 MONTROSE ROAD  
SUITE 200  
POTOMAC, MD 20854  
PHONE: (240) 398-1500  
ROCHEN@WILGUS.COM  
RICHARD COHEN

MAP	ADC	GRID	5285
TAX MAP	G062	ZONING CATEGORY	CR-2B (C-1, C-2, R-1, R-2, R-3, R-4, R-5, R-6, R-7, R-8, R-9, R-10)
WESC 200 SHEET	215 NW 06	SITE DATUM	HORIZONTAL: NAD83 VERTICAL: NAD83

**PROFESSIONAL CERTIFICATION**  
I HEREBY CERTIFY THAT THESE DOCUMENTS WERE PREPARED OR APPROVED BY ME, AND THAT I AM A DULY LICENSED PROFESSIONAL ENGINEER UNDER THE LAWS OF THE STATE OF MARYLAND.  
LICENSE NO. 31257 EXPIRATION DATE: 05/18/2022



**PRELIMINARY STORM DRAIN COVER**

**PRELIMINARY STORM DRAIN PLANS  
NORTHPARK AT MONTROSE  
(formerly WILGUS TRACT)  
7811 MONTROSE ROAD**

POTOMAC (1ST) ELECTION DISTRICT, MONTGOMERY COUNTY, MARYLAND

SHEET	1
OF	6
PROJECT NO.	1326-02-01