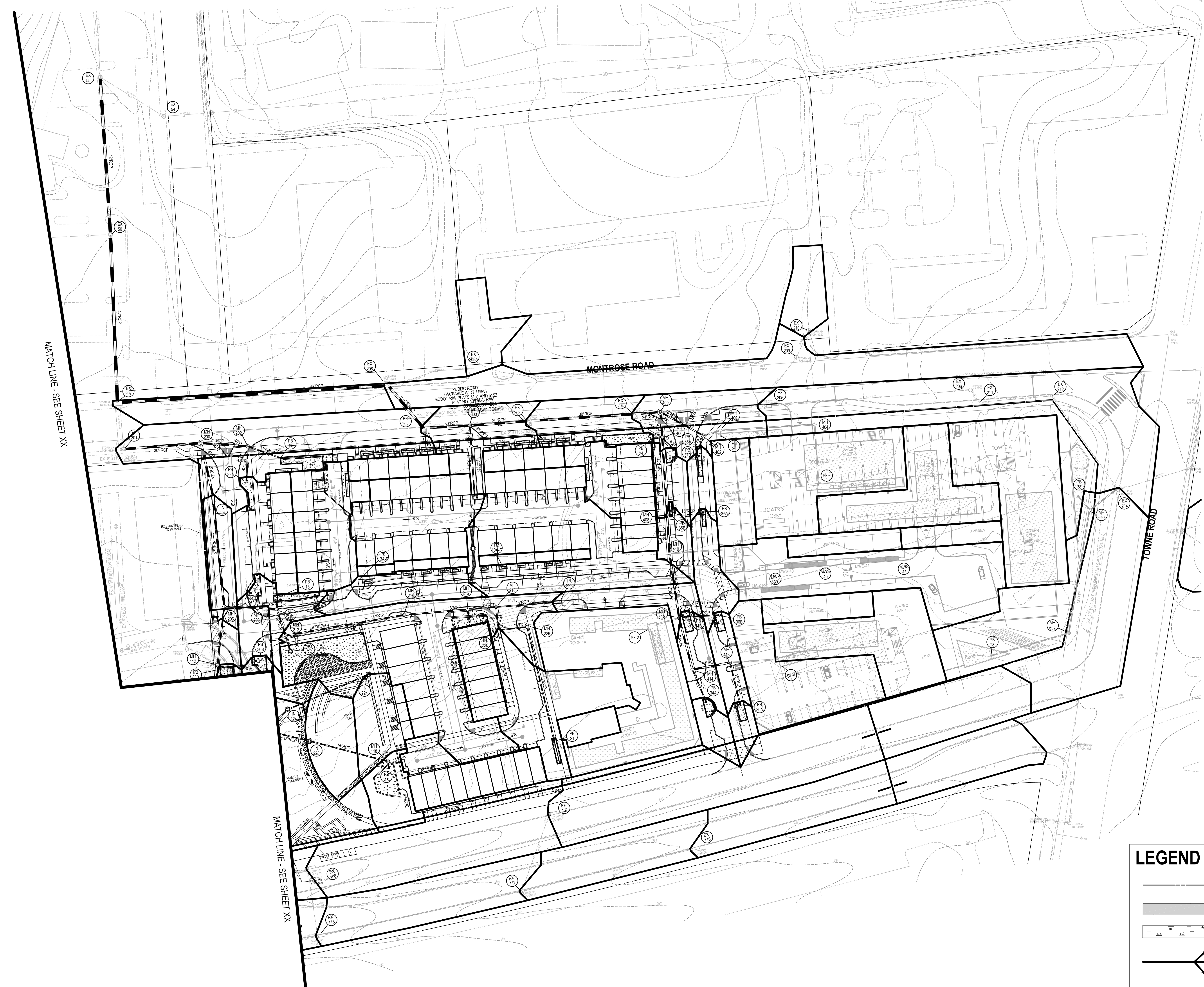


REFERENCE GRID  
 A B C D E F G H I J K L M N O  
 1 2 3 4 5 6 7 8 9 10  
 The original of this drawing document was prepared by Soltesz, Inc. (SOLTESZ). If this document was not obtained directly from SOLTESZ, and/or it was transmitted electronically, SOLTESZ cannot guarantee that unauthorized changes and/or alterations were not made by others. If verification of the information contained herein is needed, contact should be made directly with SOLTESZ. SOLTESZ makes no warranties, express or implied, concerning the accuracy of any information that has been transmitted by electronic means.

SCALE: 1" = 50'



**LEGEND**

- PROPERTY LINE
- UNDERGROUND STORAGE VAULT
- PLANTER BOX
- PROPOSED DRAINAGE DIVIDE



**SOLTESZ, INC.**

Rockville Office  
 2 Research Place, Suite 100  
 Rockville, MD 20850  
 P. 301.948.2750 F. 301.948.9067

Rockville  
 Lanham  
 Waldorf  
 Leonardtown  
 Frederick  
 Soltesz DC, LLC

www.soltesz.com

NO.	DATE	DESIGNED	CAO STANDARDS VERSION	REVISIONS	BY	DATE
	DECEMBER 2020	A.G.	V9 - NCS			
					J.S.	

**MISS UTILITY NOTE**

INFORMATION CONCERNING EXISTING UNDERGROUND UTILITIES WAS OBTAINED FROM AVAILABLE RECORDS. THE CONTRACTOR MUST DETERMINE THE EXACT LOCATION AND ELEVATION OF ALL EXISTING UTILITIES AND UTILITIES ORIGINATING FROM EXISTING TEST PITS BY HAND, WELL IN ADVANCE OF THE START OF EXCAVATION. CONTACT "MISS UTILITY" AT 1-800-251-7777, 48 HOURS PRIOR TO THE START OF EXCAVATION. IF CLEARANCES ARE LESS THAN SHOWN ON THIS PLAN OR TWELVE (12) INCHES, WHICHEVER IS LESS, CONTACT THE ENGINEER AND THE UTILITY COMPANY BEFORE PROCEEDING WITH CONSTRUCTION. CLEARANCES LESS THAN NOTED MAY REQUIRE REVISIONS TO THIS PLAN.

**OWNER/DEVELOPER/APPLICANT**

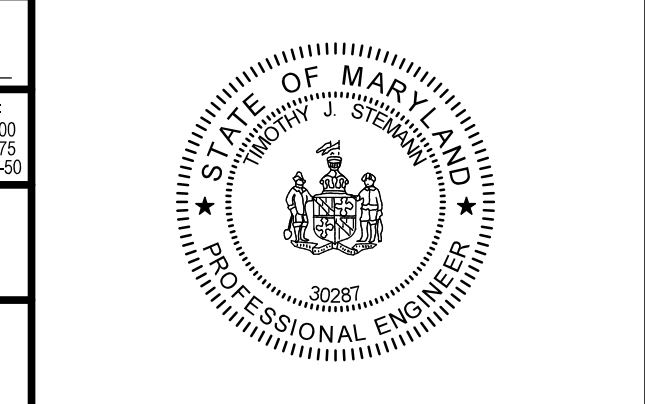
WILGUS-MONTROSE ASSOCIATES, LLC  
 7811 MONTROSE ROAD  
 SUITE 200  
 POTOMAC, MD 20854  
 PHONE: (240) 398-1500  
 ROCKEN@WILGUS.COM  
 RICHARD COHEN

MAP	ADC	GRID	5285
TAX MAP	G062	ZONING CATEGORY	CR2B (C-1), R-10, R-20, R-30, R-40, R-50, R-60, R-70, R-80, R-90, R-100, R-110, R-120, R-130, R-140, R-150, R-160, R-170, R-180, R-190, R-200, R-210, R-220, R-230, R-240, R-250, R-260, R-270, R-280, R-290, R-300, R-310, R-320, R-330, R-340, R-350, R-360, R-370, R-380, R-390, R-400, R-410, R-420, R-430, R-440, R-450, R-460, R-470, R-480, R-490, R-500, R-510, R-520, R-530, R-540, R-550, R-560, R-570, R-580, R-590, R-600, R-610, R-620, R-630, R-640, R-650, R-660, R-670, R-680, R-690, R-700, R-710, R-720, R-730, R-740, R-750, R-760, R-770, R-780, R-790, R-800, R-810, R-820, R-830, R-840, R-850, R-860, R-870, R-880, R-890, R-900, R-910, R-920, R-930, R-940, R-950, R-960, R-970, R-980, R-990, R-1000
WESC 200 SHEET			
	215 NW 06		
SITE DATUM			
HORIZONTAL:	NAD83		
VERTICAL:	NAD83		

**PROFESSIONAL CERTIFICATION**

I HEREBY CERTIFY THAT THESE DOCUMENTS WERE PREPARED OR APPROVED BY ME, AND THAT I AM A DULY LICENSED PROFESSIONAL ENGINEER UNDER THE LAWS OF THE STATE OF MARYLAND.

LICENSE NO. 30287 EXPIRATION DATE: 05/18/2022



**STORM DRAIN DRAINAGE AREA MAP**

**PRELIMINARY STORM DRAIN PLANS  
 NORTHPARK AT MONTROSE  
 (FORMERLY WILGUS TRACT)  
 7811 MONTROSE ROAD**

POTOMAC (1ST) ELECTION DISTRICT, MONTGOMERY COUNTY, MARYLAND

PROJECT NO.  
1326-02-01

1" = 50'

SHEET **3**  
OF **6**

PROJECT NO.  
1326-02-01