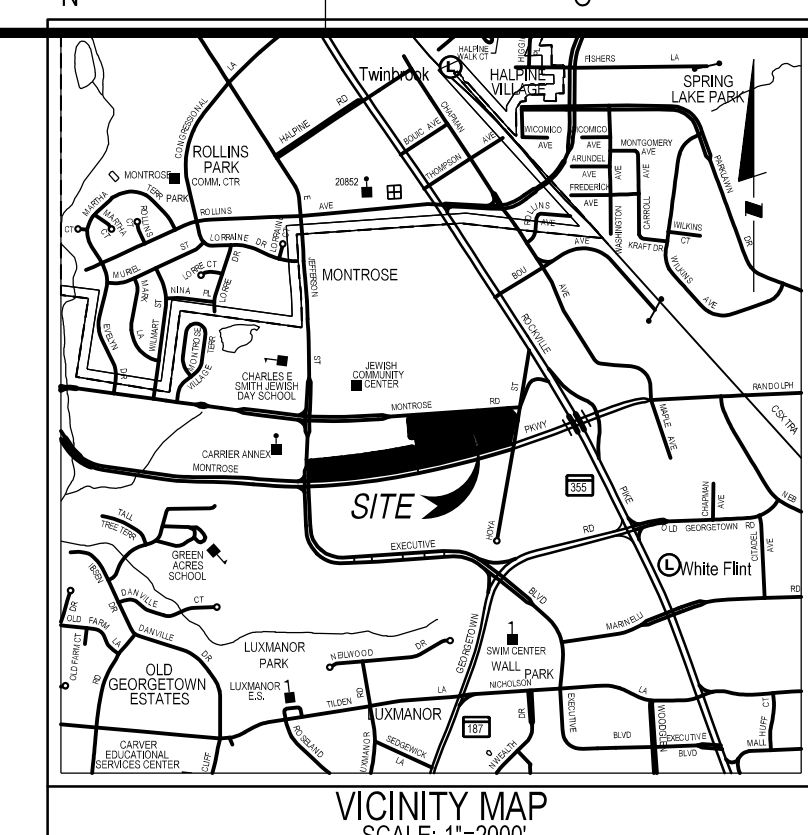


The original of this drawing document was prepared by Soltesz, Inc. (SOLTESZ). This document was not obtained directly from SOLTESZ, Inc. (SOLTESZ). If this document was not obtained directly from SOLTESZ, Inc. (SOLTESZ), it was transmitted electronically, SOLTESZ cannot guarantee that unauthorized changes and/or alterations were not made by others. If verification of the information contained herein is needed, contact should be made directly with SOLTESZ. SOLTESZ makes no warranties, express or implied, concerning the accuracy of any information that has been transmitted by electronic means.



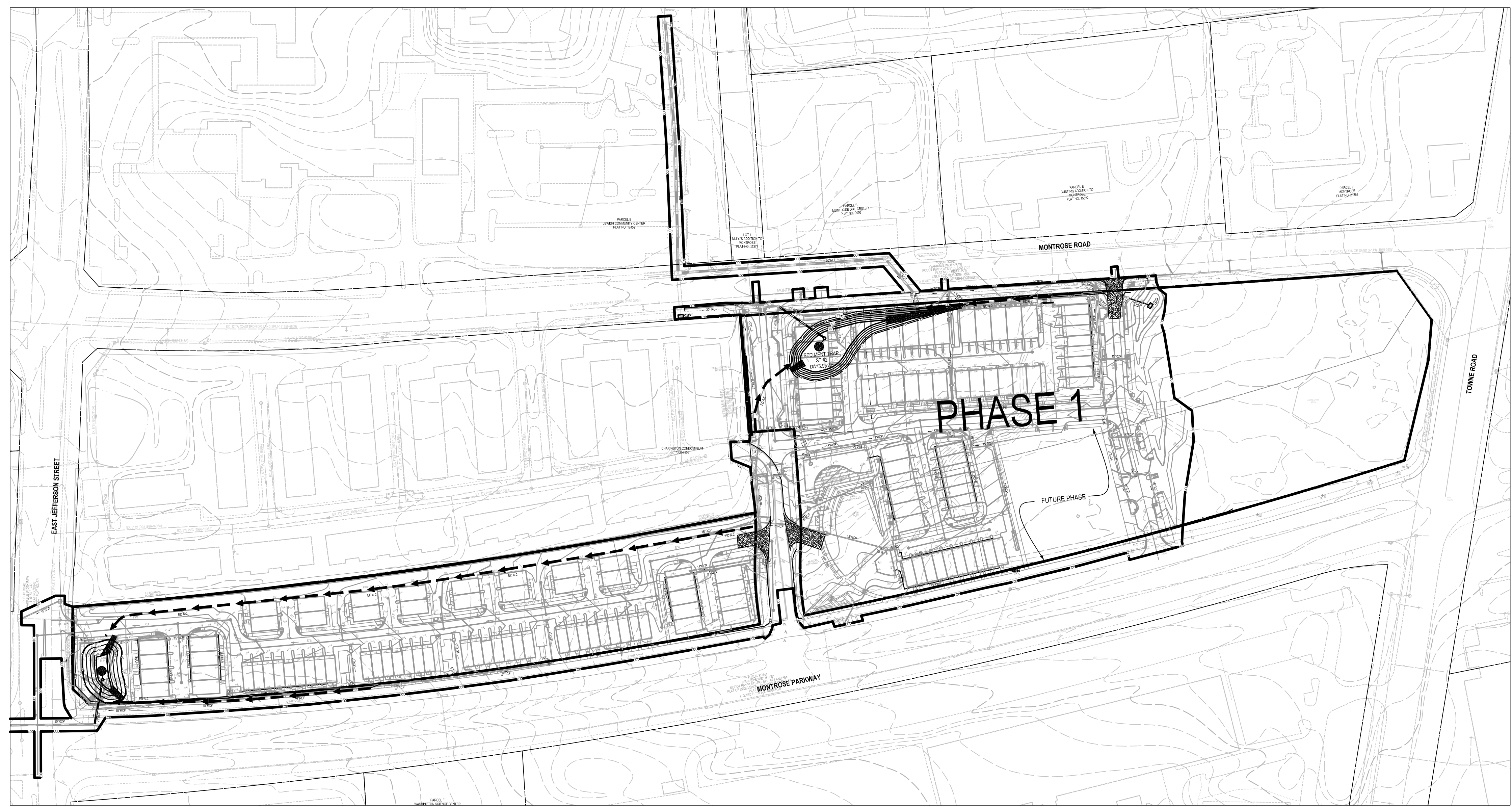
# NORTHPARK AT MONTROSE (WILGUS TRACT)

## SEDIMENT CONTROL CONCEPT PLAN

### FOR SITE PLAN PHASE 1

ROCKVILLE (4th) ELECTION DISTRICT  
MONTGOMERY COUNTY, MARYLAND

SCALE: 1" = 100'



### SHEET INDEX

1. SEDIMENT CONTROL CONCEPT COVER
2. SEDIMENT CONTROL CONCEPT PLAN
3. SEDIMENT CONTROL CONCEPT PLAN
4. SEDIMENT CONTROL DRAINAGE AREA MAP
5. SEDIMENT CONTROL NOTES AND DETAILS
6. SEDIMENT CONTROL DETAILS

**SOLTESZ, INC.**  
 Engineering  
 Surveying  
 Planning  
 Environmental Sciences

Rockville Office  
 2 Research Place, Suite 100  
 Rockville, MD 20850  
 P. 301.948.2750 F. 301.948.9067

Rockville  
 Lanham  
 Waldorf  
 Leonardtown  
 Frederick  
 Soltesz DC, LLC

www.soltesz.com

| NO. | DATE | DESIGNED | TECHNICIAN | REVISIONS | BY | DATE |
|-----|------|----------|------------|-----------|----|------|
|     |      |          |            |           |    |      |

NO. \_\_\_\_\_ DATE \_\_\_\_\_ DESIGNED \_\_\_\_\_ TECHNICIAN \_\_\_\_\_ REVISIONS \_\_\_\_\_ BY \_\_\_\_\_ DATE \_\_\_\_\_

DATE: OCTOBER 2019 CAD STANDARDS VERSION: V8 - NCS CHECKED: J.S.

**MISS UTILITY NOTE**

INFORMATION CONCERNING EXISTING UNDERGROUND UTILITIES WAS OBTAINED FROM AVAILABLE RECORDS. THE CONTRACTOR MUST DETERMINE THE EXACT LOCATION AND ELEVATION OF ALL EXISTING UTILITIES AND UTILITY CROSSINGS BY EXCAVATING TEST PITS BY HAND, WELL IN ADVANCE OF THE START OF EXCAVATION. CONTACT "MISS UTILITY" AT 1-800-261-7777 48 HOURS PRIOR TO THE START OF EXCAVATION. IF CLEARANCES ARE LESS THAN SHOWN ON THIS PLAN OR TWELVE (12) INCHES, WHICHEVER IS LESS, CONTACT THE ENGINEER AND THE UTILITY COMPANY BEFORE PROCEEDING WITH CONSTRUCTION. CLEARANCES LESS THAN NOTED MAY REQUIRE REVISIONS TO THIS PLAN.

**OWNER/DEVELOPER/APPLICANT**

WILGUS-MONTROSE ASSOCIATES, LLC  
 7811 MONTROSE ROAD  
 SUITE 200  
 POTOMAC, MD 20854  
 PHONE: (301) 399-1500  
 RCOHEN@WILLCO.COM  
 RICHARD COHEN

|                |           |                 |  |
|----------------|-----------|-----------------|--|
| MAP            | ADC       | GRID            | 5285   |
| TAX MAP        | G002      | ZONING CATEGORY | CR-20, CD-10, RA-10, HO-20, CR-10, CD-10, RA-10, HO-20 |
| WISC 200 SHEET | 215 NW 06 | SITE DATUM      |  |
| HORIZONTAL     | NAD83     | VERTICAL        | NAD83  |

**PROFESSIONAL CERTIFICATION**  
 I HEREBY CERTIFY THAT THESE DOCUMENTS WERE PREPARED OR APPROVED BY ME, AND THAT I AM A DULY LICENSED PROFESSIONAL ENGINEER UNDER THE LAWS OF THE STATE OF MARYLAND.  
 LICENSE NO. 30227 EXPIRATION DATE: 05/18/2022



**SEDIMENT CONTROL CONCEPT COVER**

**SEDIMENT CONTROL CONCEPT**  
**NORTHPARK AT MONTROSE (WILGUS TRACT)**  
**SITE PLAN 820210080**  
**6060 MONTROSE ROAD**  
 ROCKVILLE (4TH) ELECTION DISTRICT, MONTGOMERY COUNTY, MARYLAND

PROJECT NO.  
1325-02-01

1" = 100'

SHEET **1**  
OF **6**