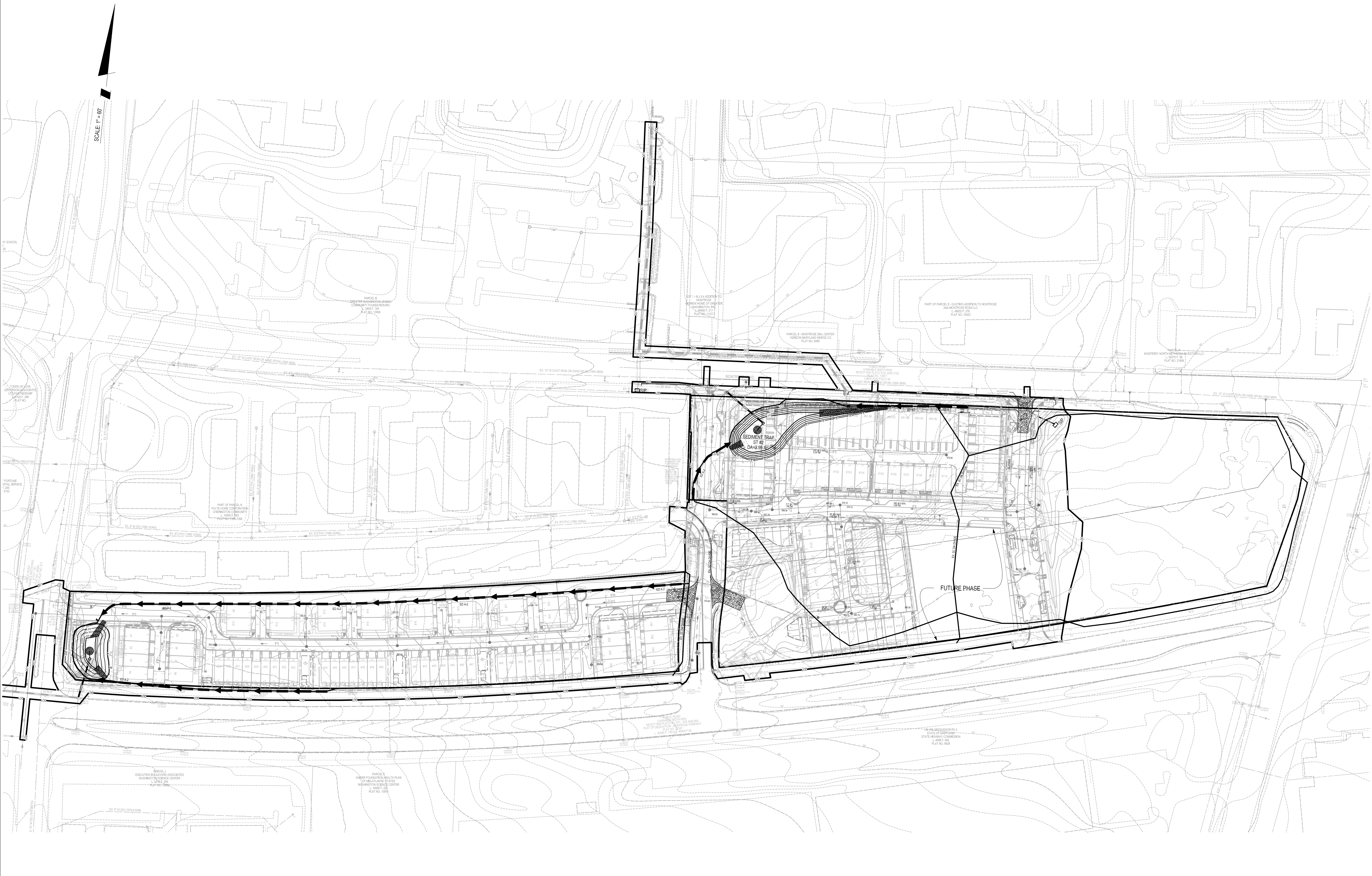


The original of this drawing document was prepared by Soltesz, Inc. (SOLTESZ). This document was not obtained directly from SOLTESZ, Inc. (SOLTESZ), and it was transmitted electronically. SOLTESZ cannot guarantee that unauthorized changes and/or alterations were not made by others. If verification of the information contained herein is needed, contact should be made directly with SOLTESZ. SOLTESZ makes no warranties, express or implied, concerning the accuracy of any information that has been transmitted by electronic means.



SOLTESZ, INC.
 Engineering
 Surveying
 Planning
 Environmental Sciences

Rockville
 Lanham
 Waldorf
 Leonardtown
 Frederick
 Soltesz DC, LLC

ROCKVILLE OFFICE
 2 Research Place, Suite 100
 Rockville, MD 20850
 P. 301.948.2750 F. 301.948.9067
 www.soltesz.com

NO.	DATE	REVISIONS	BY	DATE
DESIGNED:	OCTOBER 2019	CAO STANDARDS VERSION:	19 - NCS	
A.G.		TECHNICIAN:	A.G.	CHECKED:
				J.S.

MISS UTILITY NOTE

INFORMATION CONCERNING EXISTING UNDERGROUND UTILITIES WAS OBTAINED FROM AVAILABLE RECORDS. THE CONTRACTOR MUST DETERMINE THE EXACT LOCATION AND ELEVATION OF ALL EXISTING UTILITIES AND UTILITY ORIGINATORS BY EXCAVATING TEST PITS BY HAND, WELL IN ADVANCE OF THE START OF EXCAVATION. CONTACT MISS UTILITY AT 1-800-261-7777, 48 HOURS PRIOR TO THE START OF EXCAVATION. IF CLEARANCES ARE LESS THAN SHOWN ON THIS PLAN OR TWELVE (12) INCHES, WHICHEVER IS LESS, CONTACT THE ENGINEER AND THE UTILITY COMPANY BEFORE PROCEEDING WITH CONSTRUCTION. CLEARANCES LESS THAN NOTED MAY REQUIRE REVISIONS TO THIS PLAN.

OWNER/DEVELOPER/APPLICANT

WILGUS/MONTROSE ASSOCIATES, LLC
 7811 MONTROSE ROAD
 SUITE 200
 POTOMAC, MD 20854
 PHONE: (301) 399-1500
 RCOHEN@WILCO.COM
 RICHARD COHEN

MAP	ADC	GRID	5285
TAX MAP	GC02		
WBCS 200 SHEET	215 NW 06		
SITE DATUM	HORIZONTAL: NAD83		
VERTICAL:	NAD83		

PROFESSIONAL CERTIFICATION

I HEREBY CERTIFY THAT THESE DOCUMENTS WERE PREPARED OR APPROVED BY ME, AND THAT I AM A DULY LICENSED PROFESSIONAL ENGINEER UNDER THE LAWS OF THE STATE OF MARYLAND.

LICENSE NO. 30227 EXPIRATION DATE: 05/18/2022

SEDIMENT CONTROL DRAINAGE AREA MAP

SEDIMENT CONTROL CONCEPT
NORTH PARK AT MONTROSE (WILGUS TRACT)
SITE PLAN 820210080
6060 MONTROSE ROAD
 ROCKVILLE (4TH) ELECTION DISTRICT, MONTGOMERY COUNTY, MARYLAND

SHEET 4 OF 6

PROJECT NO. 1325-02-01